

# Maxxim Construction at:

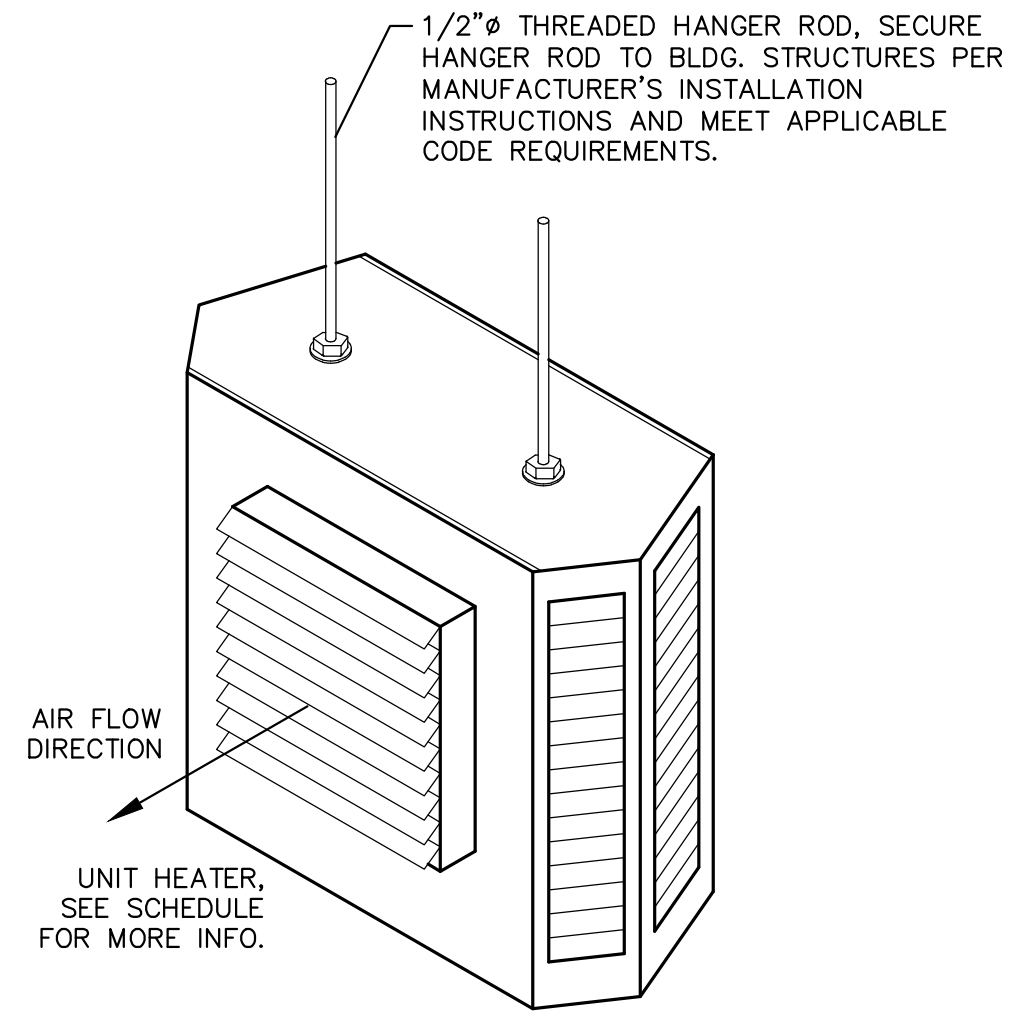
226 & 222 Industrial Loop South  
Orange Park, Florida 32073

Building Manager:  
Wesjax Development Co.  
569 Edgewood Ave. S  
Jacksonville, Florida 32205

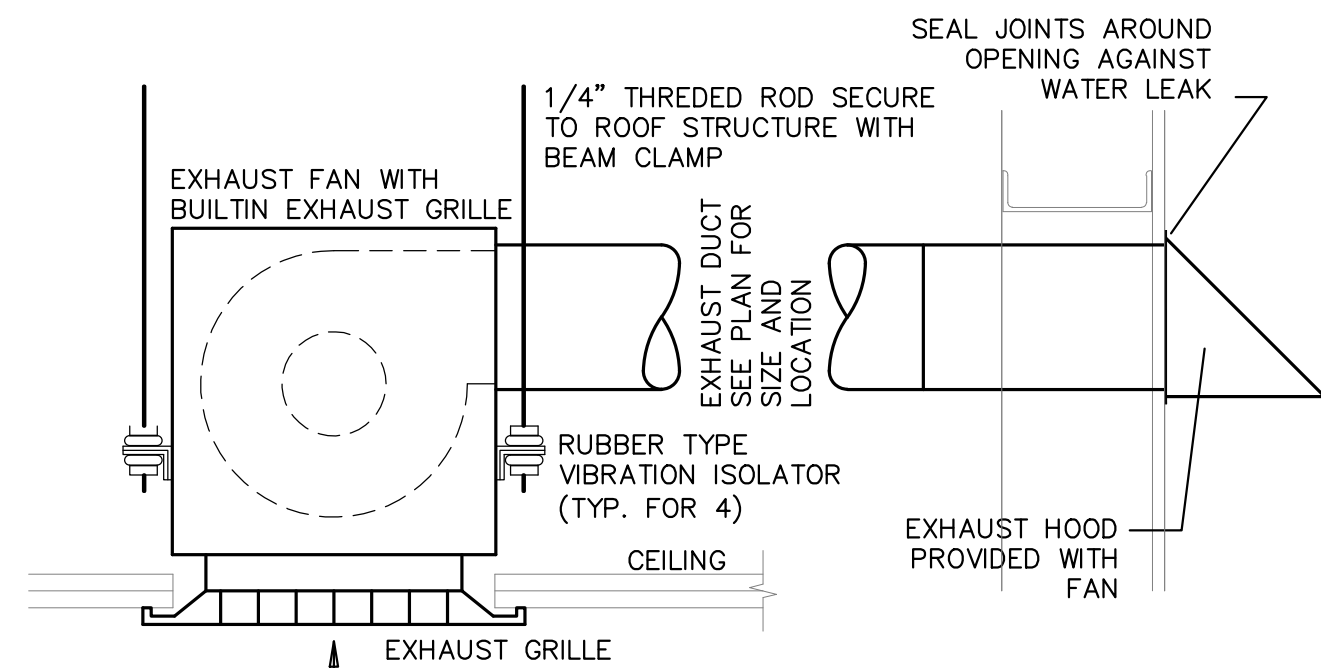
Architectural Services:  
Michael Blake Architects LLC  
904 Margaret St.  
Suite 101  
Jacksonville, Florida 32204  
904.708.0826  
M. Blake, Reg. No. AR 96125

Mechanical, Electrical, & Plumbing  
Engineering:

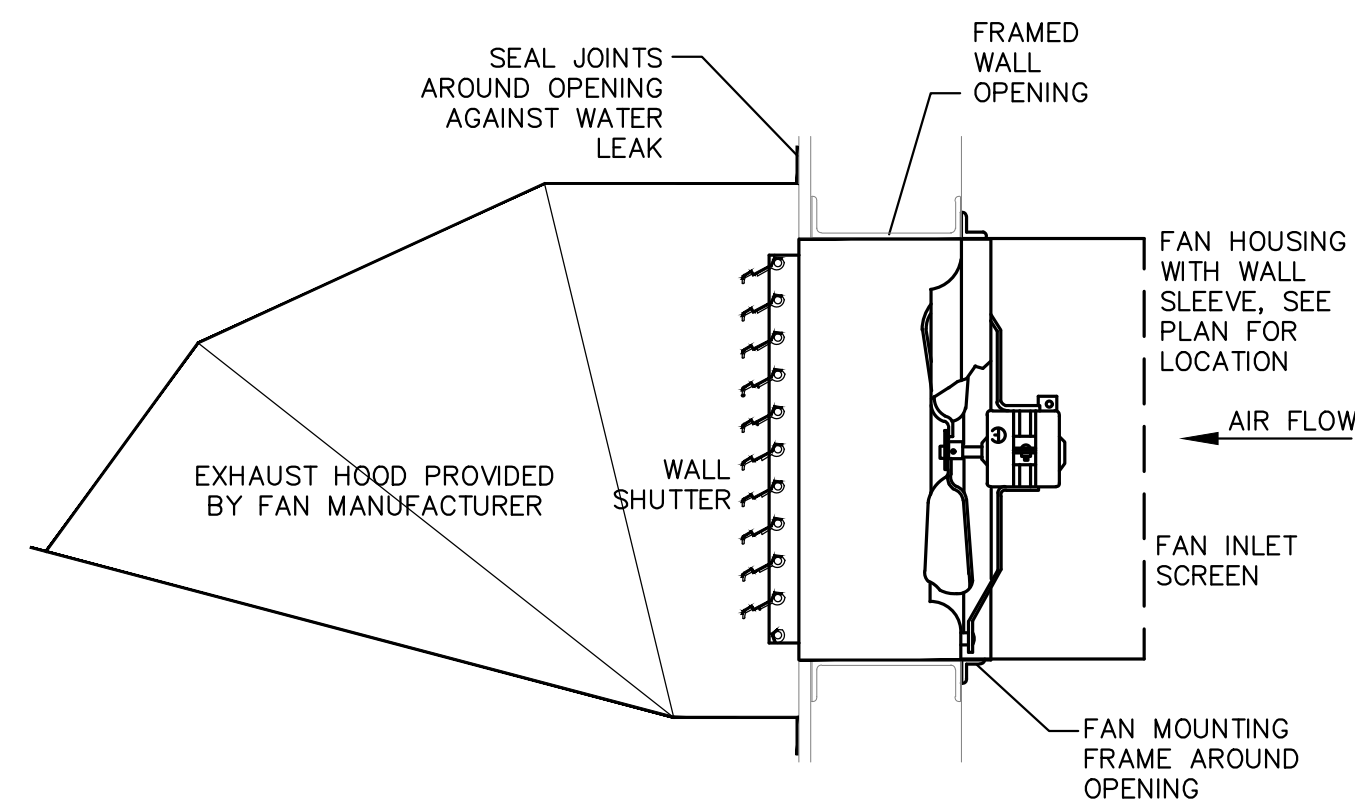
Powell & Hinkle Engineering  
1409 Kingsley Avenue, Building 12A  
Orange Park, Florida  
904 708 0826  
Robert Hinkle, PE No. 29302  
Lane Hinkle, PE No. 48076  
Thomas Elder, PE No. 56121



**DETAIL - UNIT HEATER SUPPORT**  
NOT TO SCALE



**DETAIL - CEILING FAN**  
NOT TO SCALE



**DETAIL - WALL FAN**  
NOT TO SCALE

### EQUIPMENT SCHEDULE - EXHAUST FAN

APPROVED MANUFACTURER		COOK		
EQUIPMENT NUMBER	EF-102	EF-103	EF-W101	
MOUNTING TYPE	CEILING	CEILING	WALL	
FAN	TYPE	CENTRIF	CENTRIF	PROPELLER
	DRIVE	DIRECT	DIRECT	DIRECT
	RPM	808	808	1485
	CFM	75	75	500
	S.P. - IN.	0.25	0.25	0.125
HP	(31 WATTS)	(31 WATTS)	1/20	
MODEL No.	GC-146	GC-146	10XW28D15	
ELECTRICAL DATA	120/1	120/1	120/1	
ACCESSORIES, OPTION OR REMARK	(1) (2) (3)	(1) (2) (3)	(1) (4)	

NOTE:  
(1) UNIT MOUNTED DISCONNECT AND SPEED CONTROLLER.  
(2) PROVIDE UNIT WITH ON/OFF CONTROL INTERLOCK WITH ROOM LIGHTING FOR ON/OFF CONTROL.  
(3) PROVIDE UNIT WITH WALL CAP.  
(4) PROVIDE UNIT WITH WALL COLLAR, SHUTTER, 90 DEGREE WEATHER HOOD AND MOTOR SIZE WIREGUARD.

### OUTSIDE AIR SCHEDULE

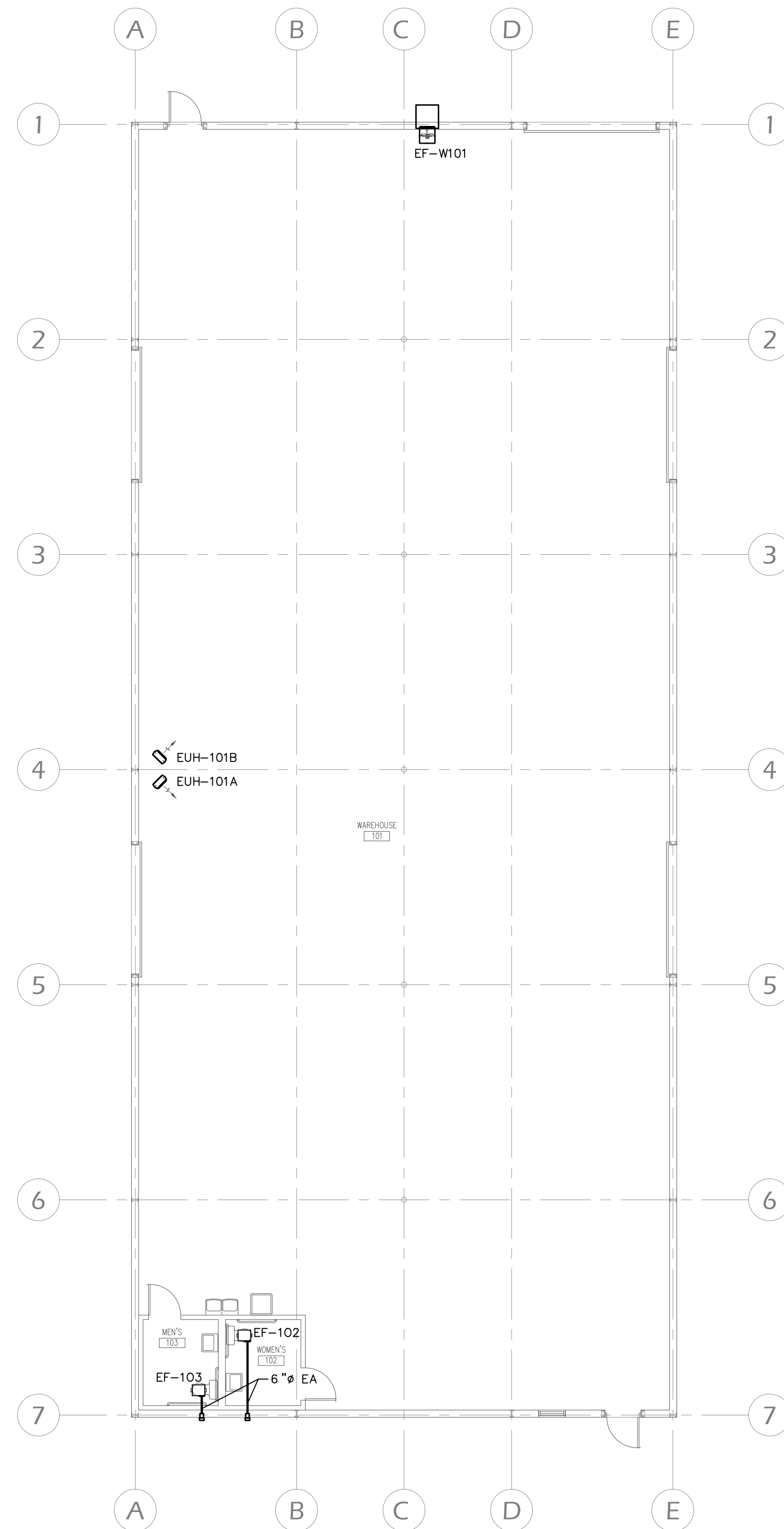
ROOM NAME AND NUMBER		WAREHOUSE 101
FLOOR AREA - SF	(Az)	5880
OA CFM PER SF	(Ro)	0.06
OA CFM (FLOOR AREA)		353
OCCUPANCY - DENSITY PER 1000 SF	(NO DEFINED BY CODE)	
OCCUPANCY	(Pz)	12
OA CFM PER OCCUPANCY	(Rp)	10
OA CFM (OCCUPANCY)		120
TOTAL OA CFM PER SPACE	(RpPz+RgAz)	473

NOTE:  
1. OUTSIDE AIR CALCULATION IS BASED ON THE OUTSIDE AIR REQUIREMENTS PER FLORIDA BUILDING CODE - MECHANICAL; CHAPTER 4,

### EQUIPMENT SCHEDULE - ELECTRIC HEATER

APPROVED MANUFACTURER		MARKEL	
EQUIPMENT NUMBER	EUH-101A		
ELECT. HEATING COIL	COIL POSITION	--	
	TOTAL KW	5.0	
	# OF STAGE(S)	1	
	AIR FRICTION - IN.	--	
FAN	TYPE	PROPELLER	
	DRIVE	DIRECT	
	RPM	--	
	CFM	400	
	S.P. - IN.	--	
	HP	--	
MODEL No.	HF2B5105N		
ELECTRICAL DATA	240/1		
CIRCUIT	MCA	26	
	MOP	30	
ACCESSORIES, OPTION OR REMARK	(1) (2)		

NOTE:  
(1) UNIT MOUNTED DISCONNECT AND UNIT MOUNTED THERMOSTAT. (SET AT 40°F. FOR FREEZE PROTECTION)  
(2) 2 UNITS: EUH-101A AND EUH-101B. INSTALL UNIT AT 12"± BELOW ROOF STRUCTURES.



**HVAC PLAN**  
SCALE: 1/8" = 1'-0"

Revisions:

Date: 6.6.2025

File: 0422 HVAC

HVAC PLAN  
AND MISC. DETAILS

# Maxxim Construction at:

226 & 222 Industrial Loop South  
Orange Park, Florida 32073

**Building Manager:**  
Wesjax Development Co.  
569 Edgewood Ave. S  
Jacksonville, Florida 32205

**Architectural Services:**  
Michael Blake Architects LLC  
904 Margaret St.  
Suite 101  
Jacksonville, Florida 32204  
904.708.0826  
M. Blake, Reg. No. AR 96125

**Mechanical, Electrical, & Plumbing Engineering:**

**Powell & Hinkle Engineering**  
1409 Kingsley Avenue, Building 12A  
Orange Park, Florida  
904 708 0826  
Robert Hinkle, PE No. 29302  
Lane Hinkle, PE No. 48076  
Thomas Elder, PE No. 56121

EQUIPMENT SCHEDULE - EXHAUST FAN				
APPROVED MANUFACTURER		COOK		
EQUIPMENT NUMBER	EF-202	EF-203	EF-W201	
MOUNTING TYPE	CEILING	CEILING	WALL	
FAN	TYPE	CENTRIF	CENTRIF	PROPELLER
	DRIVE	DIRECT	DIRECT	DIRECT
	RPM	808	808	1485
	CFM	75	75	500
	S.P. - IN.	0.25	0.25	0.125
HP	(31 WATTS)	(31 WATTS)	1/20	
MODEL No.	GC-146	GC-146	10XW28D15	
ELECTRICAL DATA	120/1	120/1	120/1	
ACCESSORIES, OPTION OR REMARK	(1) (2) (3)	(1) (2) (3)	(1) (4)	

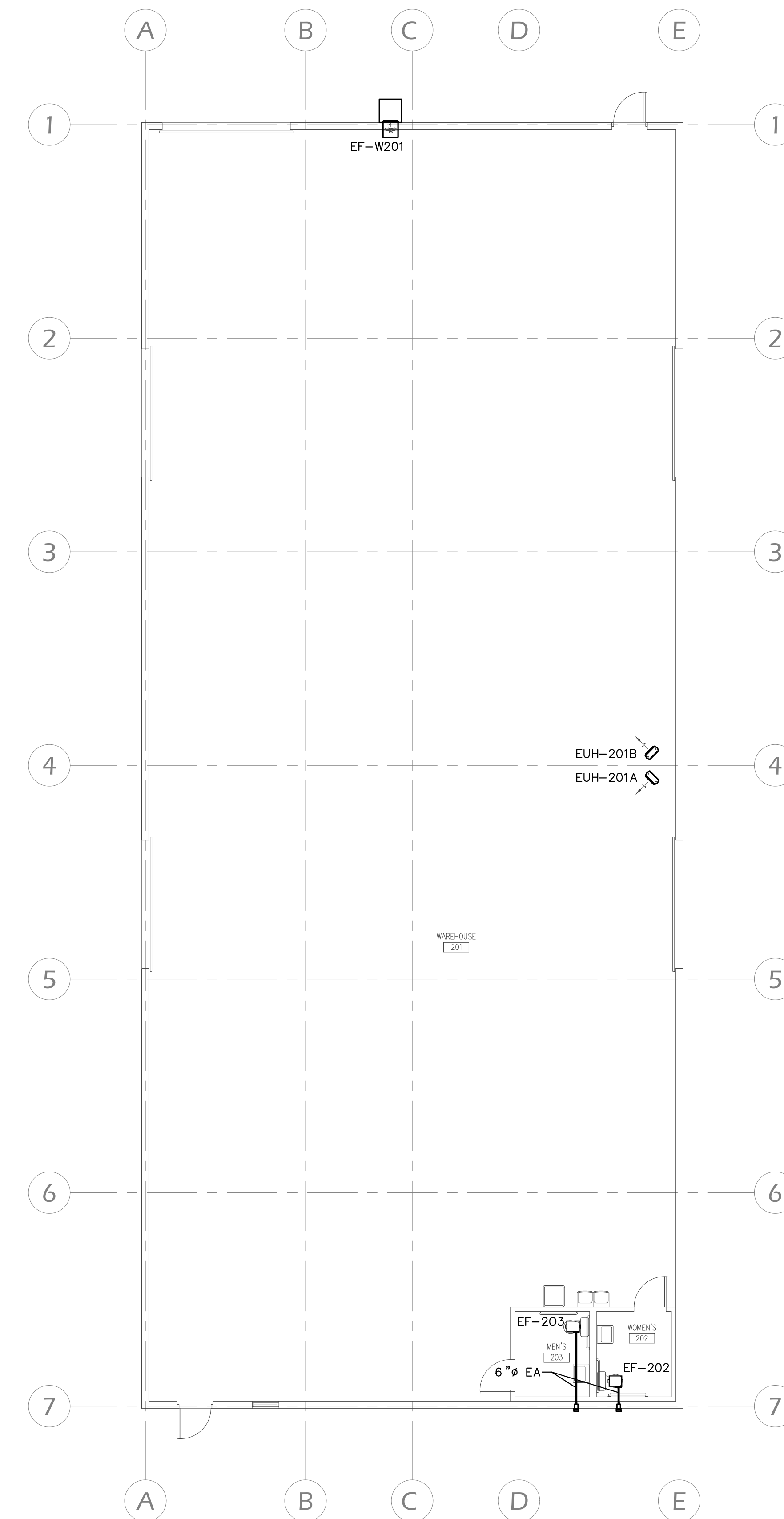
**NOTE:**  
(1) UNIT MOUNTED DISCONNECT AND SPEED CONTROLLER.  
(2) PROVIDE UNIT WITH ON/OFF CONTROL INTERLOCK WITH ROOM LIGHTING FOR ON/OFF CONTROL.  
(3) PROVIDE UNIT WITH WALL CAP.  
(4) PROVIDE UNIT WITH WALL COLLAR, SHUTTER, 90 DEGREE WEATHER HOOD AND MOTOR SIZE WIREGUARD.

OUTSIDE AIR SCHEDULE		
ROOM NAME AND NUMBER	WAREHOUSE 201	
FLOOR AREA - SF	(Az)	5880
OA CFM PER SF	(Ra)	0.06
OA CFM (FLOOR AREA)		353
OCCUPANCY - DENSITY PER 1000 SF	(NO DEFINED BY CODE)	
OCCUPANCY	(Pz)	12
OA CFM PER OCCUPANCY	(Rp)	10
OA CFM (OCCUPANCY)		120
TOTAL OA CFM PER SPACE	(RpPz+RgAz)	473

**NOTE:**  
1. OUTSIDE AIR CALCULATION IS BASED ON THE OUTSIDE AIR REQUIREMENTS PER FLORIDA BUILDING CODE - MECHANICAL; CHAPTER 4.

EQUIPMENT SCHEDULE - ELECTRIC HEATER		
APPROVED MANUFACTURER		MARKEL
EQUIPMENT NUMBER	EUH-201A	
ELECT. HEATING COIL	COIL POSITION	--
	TOTAL KW	5.0
	# OF STAGE(S)	1
	AIR FRICTION - IN.	--
FAN	TYPE	PROPELLER
	DRIVE	DIRECT
	RPM	--
	CFM	400
	S.P. - IN.	--
	HP	--
MODEL No.	HF2B5105N	
ELECTRICAL DATA	240/1	
CIRCUIT	MCA	26
	MOP	30
ACCESSORIES, OPTION OR REMARK	(1) (2)	

**NOTE:**  
(1) UNIT MOUNTED DISCONNECT AND UNIT MOUNTED THERMOSTAT. (SET AT 40°F. FOR FREEZE PROTECTION)  
(2) 2 UNITS, EUH-201A AND EUH-201B. INSTALL UNIT AT 12"± BELOW ROOF STRUCTURES.



**HVAC PLAN**  
SCALE: 1/8" = 1'-0"

Revisions: \_\_\_\_\_

Date: 6.6.2025  
File: 0422 HVAC  
**HVAC PLAN AND MISC. DETAILS**