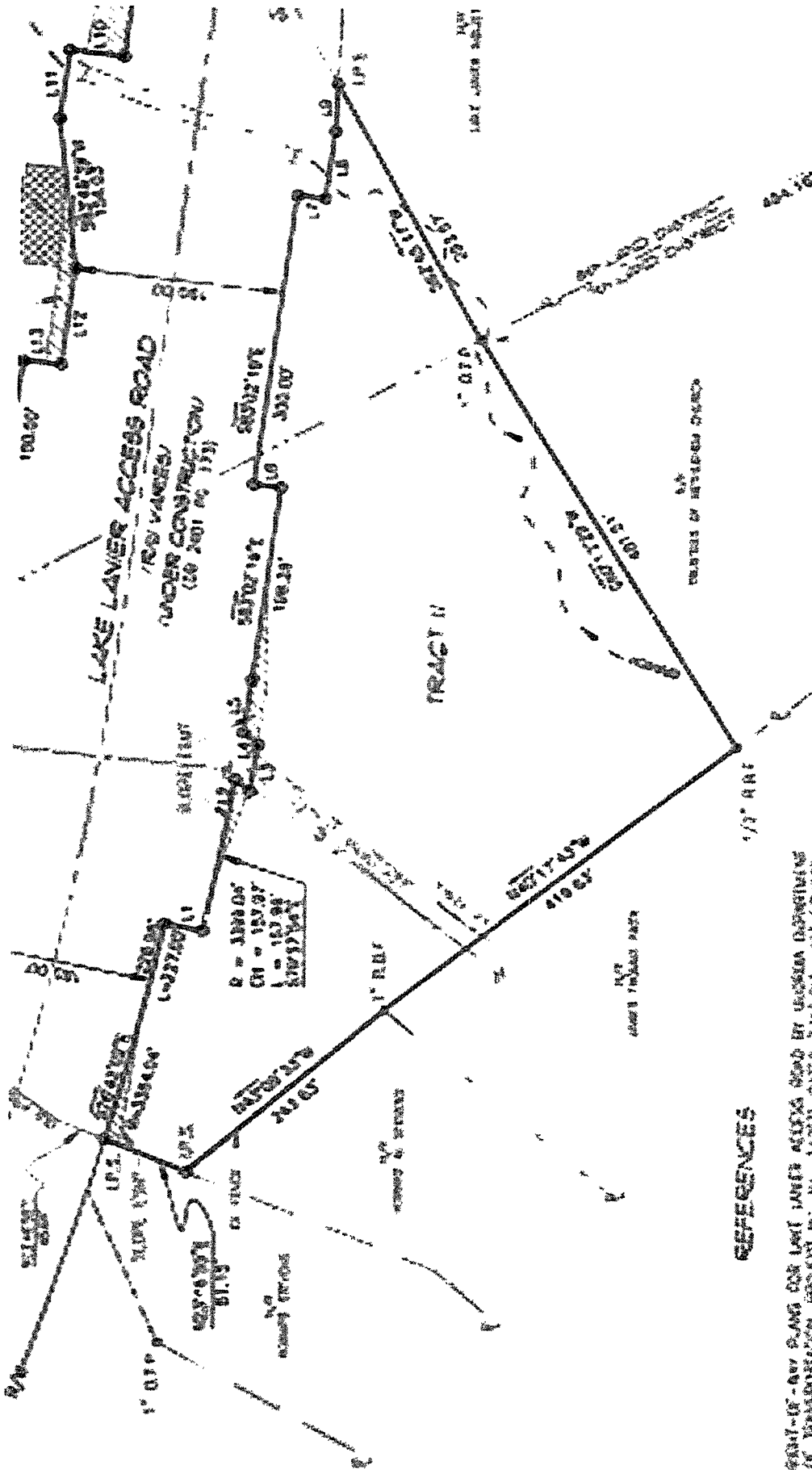


5575 Lanier Islands Pkwy, Parcel #2



The described portion is 94 feet of the original acreage information and based on the map of 1917 and on survey of 1918 it will show very good accordance with the original description of the acreage for A-1, A-2, A-3 and A-4. The survey party employed was assisted by R.A. and W.C. in 1917, and also prepared in accordance with the standard accepted and requirements of the law.

*Frank W. Dixon*

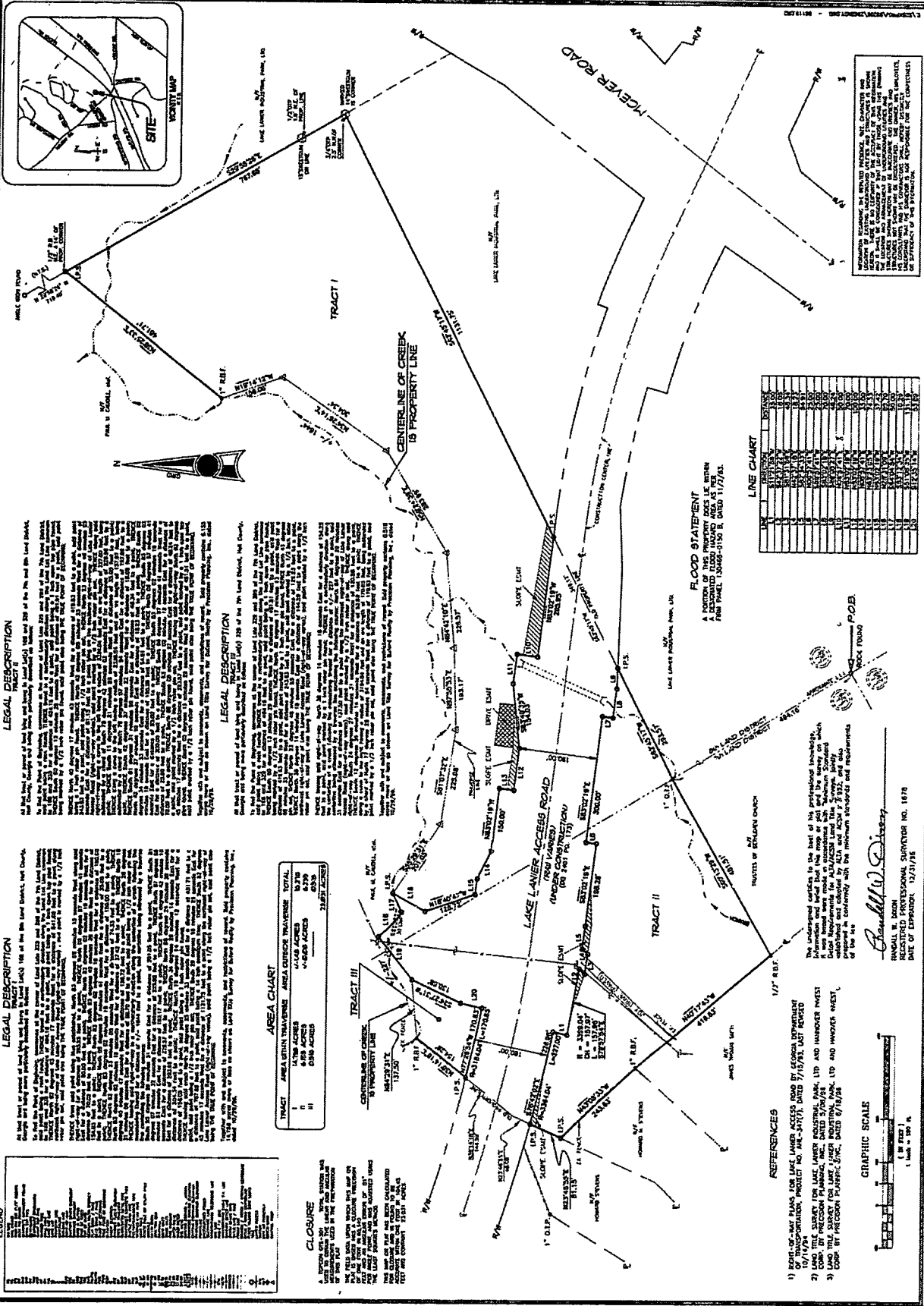
FRANK W. DIXON  
 SURVEYOR  
 200 W. 10th St. S. MINNAPOLIS, MINN.

**REFERENCES**

- 1) 6847-10-187 PLANS FOR LAKE LAYER ACCESS ROAD BY GEORGE DORRINGTON & TRANSPORTATION PROJECT IN 1910 - 1911 DATE 7/15/1914 LAST REVISED 10/1/1914
- 2) 1/400 MILE PLAN FOR LAKE LAYER MINISTRAL PARK, UP AND MOUNTAIN DRIVE CORP BY PETERSON PLANNING, INC., DATED 3/15/1918.
- 3) 1/400 MILE PLAN FOR LAKE LAYER MINISTRAL PARK, UP AND MOUNTAIN DRIVE CORP BY PETERSON PLANNING, INC., DATED 6/15/1918.

**GRAPHIC SCALE**





**LEGAL DESCRIPTION TRACT I**  
 All that part of land bounded by the following: ...

**LEGAL DESCRIPTION TRACT II**  
 All that part of land bounded by the following: ...

**LEGAL DESCRIPTION TRACT III**  
 All that part of land bounded by the following: ...

**AREA CHART**

TRACT	AREA (ACRES)	AREA (ACRES)	TOTAL
I	1.78	0.80	2.58
II	0.80	0.80	1.60
III	0.80	0.80	1.60
<b>TOTAL</b>	<b>3.38</b>	<b>2.40</b>	<b>5.78</b>

**LEGEND**

**CLOSURE**

**REFERENCES**

- 1) BOUNDARY PLANS FOR LAKE LANIER ACCESS ROAD BY GEORGIA DEPARTMENT OF TRANSPORTATION, PROJECT NO. 442-3(7), DATED 7/15/87, LAST REVISED 1/15/91.
- 2) LAND TITLE SURVEY FOR LAKE LANIER RECREATIONAL PARK, LTD. AND HANCOCK INVEST CO., BY PRECISION PLANNING, INC., DATED 12/14/94.
- 3) CONVEYANCE PLANS FOR LAKE LANIER RECREATIONAL PARK, LTD. AND HANCOCK INVEST CO., BY PRECISION PLANNING, INC., DATED 12/14/94.

**LINE CHART**

LINE NO.	START POINT	END POINT	BEARING	DISTANCE
1	...	...	...	...
2	...	...	...	...
3	...	...	...	...
4	...	...	...	...
5	...	...	...	...
6	...	...	...	...
7	...	...	...	...
8	...	...	...	...
9	...	...	...	...
10	...	...	...	...
11	...	...	...	...
12	...	...	...	...
13	...	...	...	...
14	...	...	...	...
15	...	...	...	...
16	...	...	...	...
17	...	...	...	...
18	...	...	...	...
19	...	...	...	...
20	...	...	...	...
21	...	...	...	...
22	...	...	...	...
23	...	...	...	...
24	...	...	...	...
25	...	...	...	...
26	...	...	...	...
27	...	...	...	...
28	...	...	...	...
29	...	...	...	...
30	...	...	...	...
31	...	...	...	...
32	...	...	...	...
33	...	...	...	...
34	...	...	...	...
35	...	...	...	...
36	...	...	...	...
37	...	...	...	...
38	...	...	...	...
39	...	...	...	...
40	...	...	...	...
41	...	...	...	...
42	...	...	...	...
43	...	...	...	...
44	...	...	...	...
45	...	...	...	...
46	...	...	...	...
47	...	...	...	...
48	...	...	...	...
49	...	...	...	...
50	...	...	...	...

**FLOOD STATEMENT**  
 A portion of this property does lie within FEMA FLOOD ZONE 1000-0100 R, DATED 1/17/83.

**GRAPHIC SCALES**

1" = 100'

1" = 200'

**NOTES:**

1. THIS SURVEY IS BASED UPON THE RECORDS OF THE COUNTY RECORDS OF LAKE COUNTY, ILL. AND DECATUR COUNTY, GA. AS SHOWN ON THE PLANS REFERENCED HEREIN.

2. THE PROPERTY LINES SHOWN ON THIS PLAN ARE BASED UPON THE RECORDS OF THE COUNTY RECORDS OF LAKE COUNTY, ILL. AND DECATUR COUNTY, GA. AS SHOWN ON THE PLANS REFERENCED HEREIN.

3. THE PROPERTY LINES SHOWN ON THIS PLAN ARE BASED UPON THE RECORDS OF THE COUNTY RECORDS OF LAKE COUNTY, ILL. AND DECATUR COUNTY, GA. AS SHOWN ON THE PLANS REFERENCED HEREIN.

**PRECISION PLANNING, INC.**  
 PROFESSIONAL ENGINEERS, ARCHITECTS & SURVEYORS  
 400 N. 10TH STREET, SUITE 200  
 MINNEAPOLIS, MN 55412  
 (773) 338-8000 (FAX) (773) 338-1000

**10/29/98**

**96296**

**06 212**

**101**

**LEGEND**

**CLOSURE**

**REFERENCES**

- 1) BOUNDARY PLANS FOR LAKE LANIER ACCESS ROAD BY GEORGIA DEPARTMENT OF TRANSPORTATION, PROJECT NO. 442-3(7), DATED 7/15/87, LAST REVISED 1/15/91.
- 2) LAND TITLE SURVEY FOR LAKE LANIER RECREATIONAL PARK, LTD. AND HANCOCK INVEST CO., BY PRECISION PLANNING, INC., DATED 12/14/94.
- 3) CONVEYANCE PLANS FOR LAKE LANIER RECREATIONAL PARK, LTD. AND HANCOCK INVEST CO., BY PRECISION PLANNING, INC., DATED 12/14/94.

## LEGAL DESCRIPTION TRACT II

All that tract or parcel of land lying and being in Land Lot(s) 168 and 329 of the 7th and 8th Land District, Hall County, Georgia and being more particularly described as follows:

To find the Point of Beginning, commence at the corner of Land Lots 329 and 299 of the 7th Land District, said point being a rock found; THENCE travel in a northwesterly direction along the Land Lot Line common to 168 and 329 for a distance of 494.16 feet to a point, said point being a 1 inch open top pipe found; THENCE South 60 degrees 13 minutes 29 seconds West for a distance of 481.51 feet to a point, said point being marked by a 1/2 inch rebar pin found, said point also being THE TRUE POINT OF BEGINNING;

THENCE North 40 degrees 17 minutes 43 seconds West for a distance of 419.63 feet to a point, said point being a 1 inch rebar pin found; THENCE North 43 degrees 08 minutes 33 seconds West for a distance of 243.63 feet to a point, said point being a 1/2 inch rebar pin set; THENCE North 23 degrees 46 minutes 55 seconds East for a distance of 81.15 feet to a point lying on the southern right-of-way of Lake Lanier Access Road (right-of-way varies); said point marked by a 1/2 inch rebar pin set; THENCE along said right-of-way along a curve to the left having a radius of 3364.04 feet and an arc length of 227.00 feet, being subtended by a chord of South 76 degrees 42 minutes 02 seconds East for a distance of 226.96 feet to a point; THENCE South 11 degrees 21 minutes 59 seconds West for a distance of 35.00 feet to a point; THENCE along a curve to the left having a radius of 3399.04 feet and an arc length of 157.97 feet, being subtended by a chord of South 79 degrees 57 minutes 54 seconds East for a distance of 157.96 feet to a point; THENCE South 42 degrees 37 minutes 22 seconds West for a distance of 48.34 feet to a point; THENCE North 81 degrees 31 minutes 59 seconds East for a distance of 18.06 feet to a point; THENCE South 81 degrees 31 minutes 59 seconds East for a distance of 18.23 feet to a point; THENCE South 82 degrees 42 minutes 37 minutes 18 seconds East for a distance of 18.23 feet to a point; THENCE South 83 degrees 02 degrees 34 minutes 33 seconds East for a distance of 54.91 feet to a point; THENCE South 85 degrees 57 minutes 41 minutes 19 seconds East for a distance of 198.28 feet to a point; THENCE North 06 degrees 02 minutes 19 seconds East for a distance of 25.00 feet to a point; THENCE South 06 degrees 57 minutes 41 seconds West for a distance of 300.00 feet to a point; THENCE South 08 degrees 02 minutes 19 seconds East for a distance of 25.00 feet to a point; THENCE South 83 degrees 02 minutes 19 seconds East for a distance of 70.00 feet to a point; THENCE South 88 degrees 08 minutes 27 seconds East for a distance of 48.24 feet to a point, said point marked by a 1/2 inch rebar pin set; THENCE leaving said right-of-way South 62 degrees 45 minutes 17 seconds West for a distance of 293.57 feet to a point, said point marked by a 1 inch open top pipe found; THENCE South 60 degrees 13 minutes 29 seconds West for a distance of 481.51 feet to a point, said point marked by a 1/2 inch rebar pin found, said point also being THE TRUE POINT OF BEGINNING.

Together with and subject to covenants, easements, and restrictions of record. Said property contains 6.155 acres more or less as shown on Land Title Survey for Buford Realty by Precision Planning, Inc., dated 10/29/96.