

2779 Alamance Road
2771 Alamance Road
2229 Bonnie Lane

FOR SALE or FOR LEASE

4.08 Acres | \pm 2,818 SF

Land | Office Space

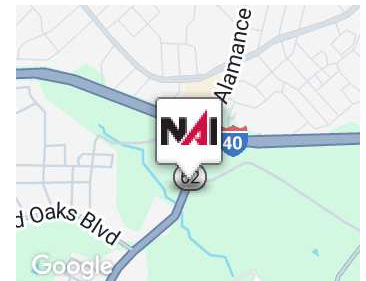


NAI Piedmont Triad

Burlington, NC 27215

Property Highlights

- 4.08 Acres and 2 Office Buildings For Lease
- 2779 Alamance Road Building SF is \pm 1448
- 2771 Alamance Road Building SF is \pm 1400
- 297 Feet of Frontage Along Alamance Road
- 503 Feet Deep
- Zoned GB LU
- Great Access to Interstate Corridor
- In the Growth Corridor for Burlington
- Close to Alamance Burlington Airport



Offering Summary

Sale Price:	\$1,200,000.00
Lease Rate:	CALL FOR PRICING

For More Information:

Bob Lewis, CCIM SIOR

336 214 1799

blewis@naipt.com

Howard Hawks, CCIM

336 516 2458

hhawks@naipt.com

We obtained the information above from sources we believe to be reliable. However, we have not verified its accuracy and make no guarantee, warranty or representation about it. It is submitted subject to the possibility of errors, omissions, change of price, rental or other conditions, prior sale, lease or financing, or withdrawal without notice. We include projections, opinions, assumptions or estimates for example only, and they may not represent current or future performance of the property. You and your tax and legal advisors should conduct your own investigation of the property and transaction.

348 N Elm Street
Greensboro, NC 27401
336 373 0995 tel
naipt.com

2779 Alamance Road
2771 Alamance Road
2229 Bonnie Lane

FOR SALE or FOR LEASE

4.08 Acres | ± 2,818 SF

Land | Office Space



We obtained the information above from sources we believe to be reliable. However, we have not verified its accuracy and make no guarantee, warranty or representation about it. It is submitted subject to the possibility of errors, omissions, change of price, rental or other conditions, prior sale, lease or financing, or withdrawal without notice. We include projections, opinions, assumptions or estimates for example only, and they may not represent current or future performance of the property. You and your tax and legal advisors should conduct your own investigation of the property and transaction.

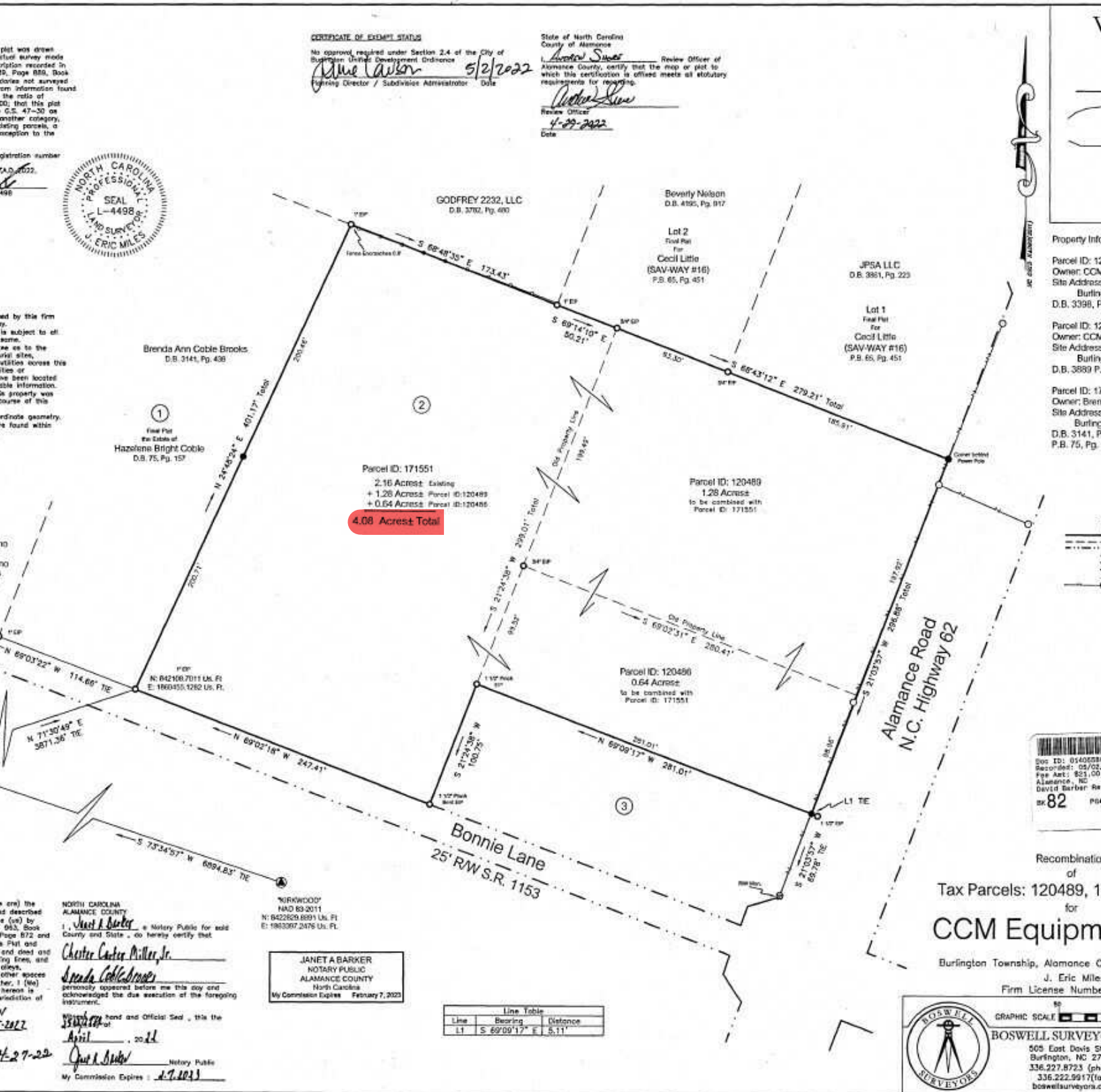
348 N Elm Street
Greensboro, NC 27401
336 373 0995 tel
naipt.com

2779 Alamance Road
2771 Alamance Road
2229 Bonnie Lane

FOR SALE or FOR LEASE

4.08 Acres | ± 2,818 SF

Land | Office Space



We obtained the information above from sources we believe to be reliable. However, we have not verified its accuracy and make no guarantee, warranty or representation about it. It is submitted subject to the possibility of errors, omissions, change of price, rental or other conditions, prior sale, lease or financing, or withdrawal without notice. We include projections, opinions, assumptions or estimates for example only, and they may not represent current or future performance of the property. You and your tax and legal advisors should conduct your own investigation of the property and transaction.

348 N Elm Street
Greensboro, NC 27401
336 373 0995 tel
naipt.com