

LOTS AVAILABLE | NORTH CREEK SUBDIVISION COMMERCIAL PARK

SWC OF GLENWOOD LANSING RD & TORRENCE,
LYNWOOD, IL 60411

LOTS FOR SALE



PROPERTY DESCRIPTION

Lagestee-Mulder is pleased to offer two individual lots located in the North Creek Subdivision PUD at the SWC of Glenwood-Lansing Road and Torrence Avenue in Lynwood IL. The professional office park includes a medical office building, child care center and First National Bank. The PUD is close to a rapidly growing residential neighborhood in Lynwood, yet is easily accessible to I-294/80.

PROPERTY HIGHLIGHTS

- Two lots available within professional suburban office park
- Part of the North Creek Subdivision (Planned Unit Development)
- SWC Glenwood-Lansing Road & Torrence Avenue (lighted intersection)
- Great location for commercial or restaurant
- Lots include detention, a private road, parking fields, lighting sewer, and water

OFFERING SUMMARY

Sale Price:	Subject To Offer
Lot 1 (Corner):	1.426 Acres
Lot 3 (Interior):	0.504 Acres
Zoning:	B-3
Uses:	Restaurant, retail, personal service, professional office

DEMOGRAPHICS	1 MILE	3 MILES	5 MILES
Total Households	2,282	20,921	69,814
Total Population	6,190	55,653	188,288
Average HH Income	\$83,241	\$79,140	\$80,591
Median HH Income	\$59,696	\$60,865	\$62,445
Median Home Value	\$165,503	\$162,704	\$160,187
Consumer Spending	\$71.8 M	\$622.7 M	\$2.1 B

MARTHA WINTER

Senior Vice President & Designated Managing Broker
224.523.9174
MARTHA@LMTEAM.COM

17005 Westview Ave.,
South Holland, IL 60473
630.325.8338
WWW.LMTEAM.COM

LOTS AVAILABLE | NORTH CREEK SUBDIVISION COMMERCIAL PARK

SWC OF GLENWOOD LANSING RD & TORRENCE,
LYNWOOD, IL 60411

LM
Lagestee-Mulder
Commercial Real Estate

LOTS FOR SALE



MARTHA WINTER

Senior Vice President & Designated Managing Broker

224.523.9174

MARTHA@LMTEAM.COM

17005 Westview Ave.,

South Holland, IL 60473

630.325.8338

WWW.LMTEAM.COM

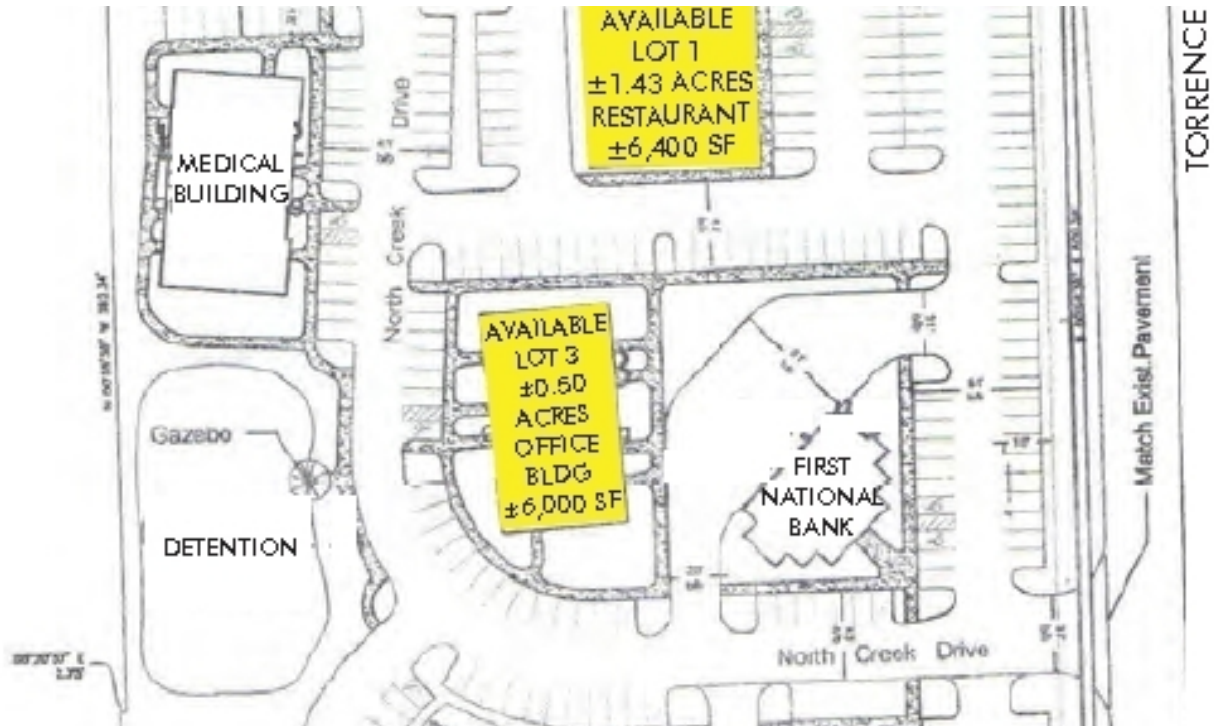
Notice: Unless a Consent to Dual Agency has been signed by both parties to a transaction for this property Martha Winter represent(s) the Seller only, and not the Buyer.

LOTS AVAILABLE | NORTH CREEK SUBDIVISION COMMERCIAL PARK

SWC OF GLENWOOD LANSING RD & TORRENCE,
LYNWOOD, IL 60411

LM
Lagestee-Mulder
Commercial Real Estate

LOTS FOR SALE



MARTHA WINTER

Senior Vice President & Designated Managing Broker

224.523.9174

MARTHA@LMTEAM.COM

17005 Westview Ave.,
South Holland, IL 60473

630.325.8338

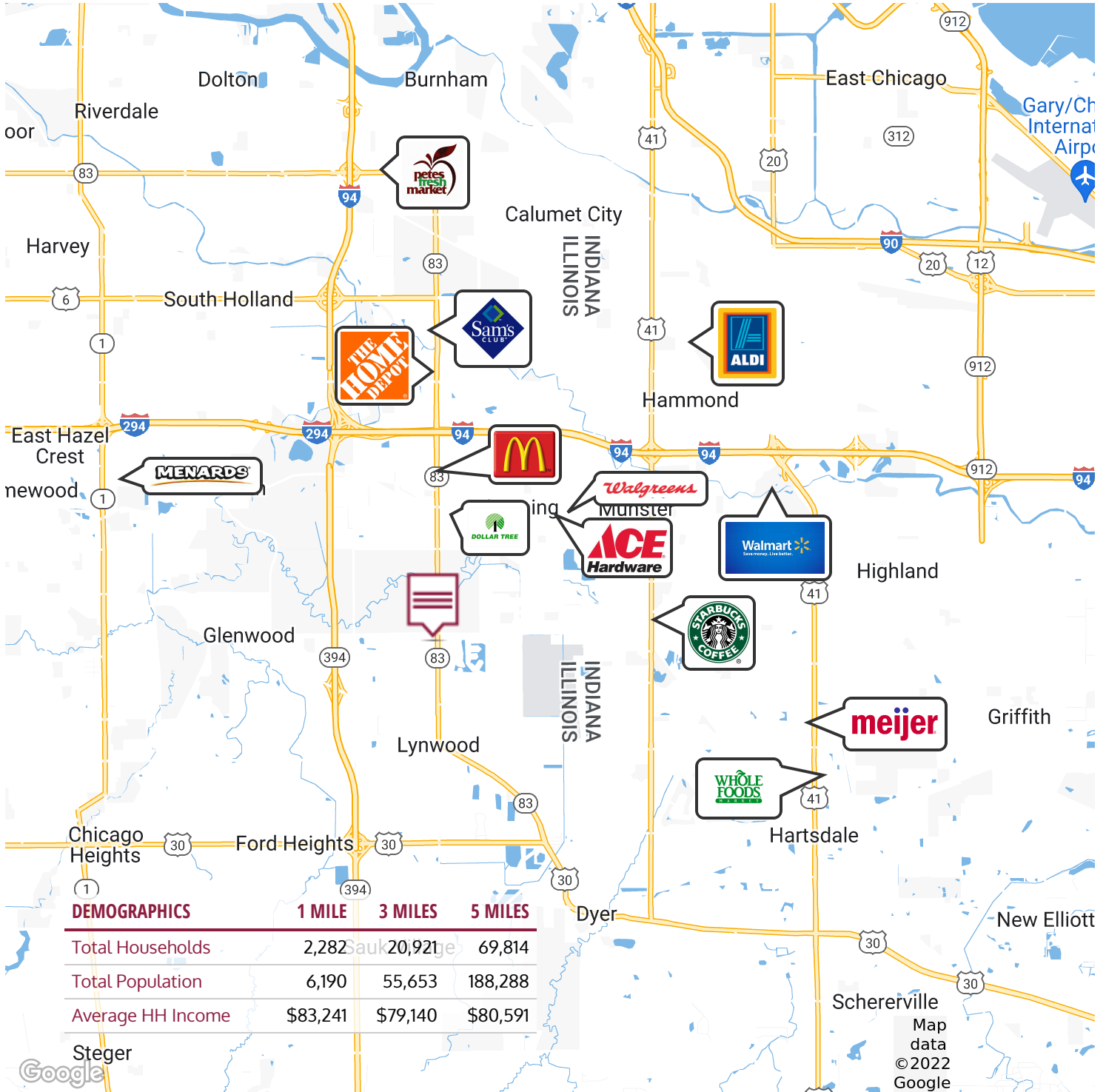
WWW.LMTEAM.COM

Notice: Unless a Consent to Dual Agency has been signed by both parties to a transaction for this property Martha Winter represent(s) the Seller only, and not the Buyer.

LOTS AVAILABLE | NORTH CREEK SUBDIVISION COMMERCIAL PARK

SWC OF GLENWOOD LANSING RD & TORRENCE,
LYNWOOD, IL 60411

LOTS FOR SALE



MARTHA WINTER

Senior Vice President & Designated Managing Broker
224.523.9174
MARTHA@LMTEAM.COM

17005 Westview Ave.,
South Holland, IL 60473
630.325.8338
WWW.LMTEAM.COM