



FOR LEASE

Asking Rate:

\$27.00 PSF MG

Contact us:

Wade Smith, SIOR

Brokerage | Arkansas

+1 214 924 1605

wade.smith@ar.colliers.com



Accelerating success.

3503 S 55th Street, Suite 200
Rogers, AR 72758
P: +1 479 636 9000
colliers.com/arkansas

Metro Park

600 S 52nd Street

Rogers, Arkansas

Property Amenities

- 5,750 square feet on the first floor
- Located on major arterial roadway with access to Interstate 49, S Walton Blvd and Pinnacle Hills Parkway

Office space available in Metro Park in Rogers, Arkansas. Property has modern architecture, ample parking and access to amenities. Space is located on the first floor and includes conference rooms, showroom and offices. Adjacent to the property is direct access to the Razorback Greenway trail system and within a few minutes drive is the Walmart AMP, Topgolf, Pinnacle Hills Promenade and just north of the property is the 350-acre Walmart Home Office campus.

Copyright © 2021 Colliers International.

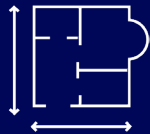
Information herein has been obtained from sources deemed reliable, however its accuracy cannot be guaranteed. The user is required to conduct their own due diligence and verification.



Adjacent to the new Oak Street overpass connecting Promenade Blvd to Rainbow Road including several roundabouts for seamless traffic flow



Quick access to
Interstate 49



5,750 square feet

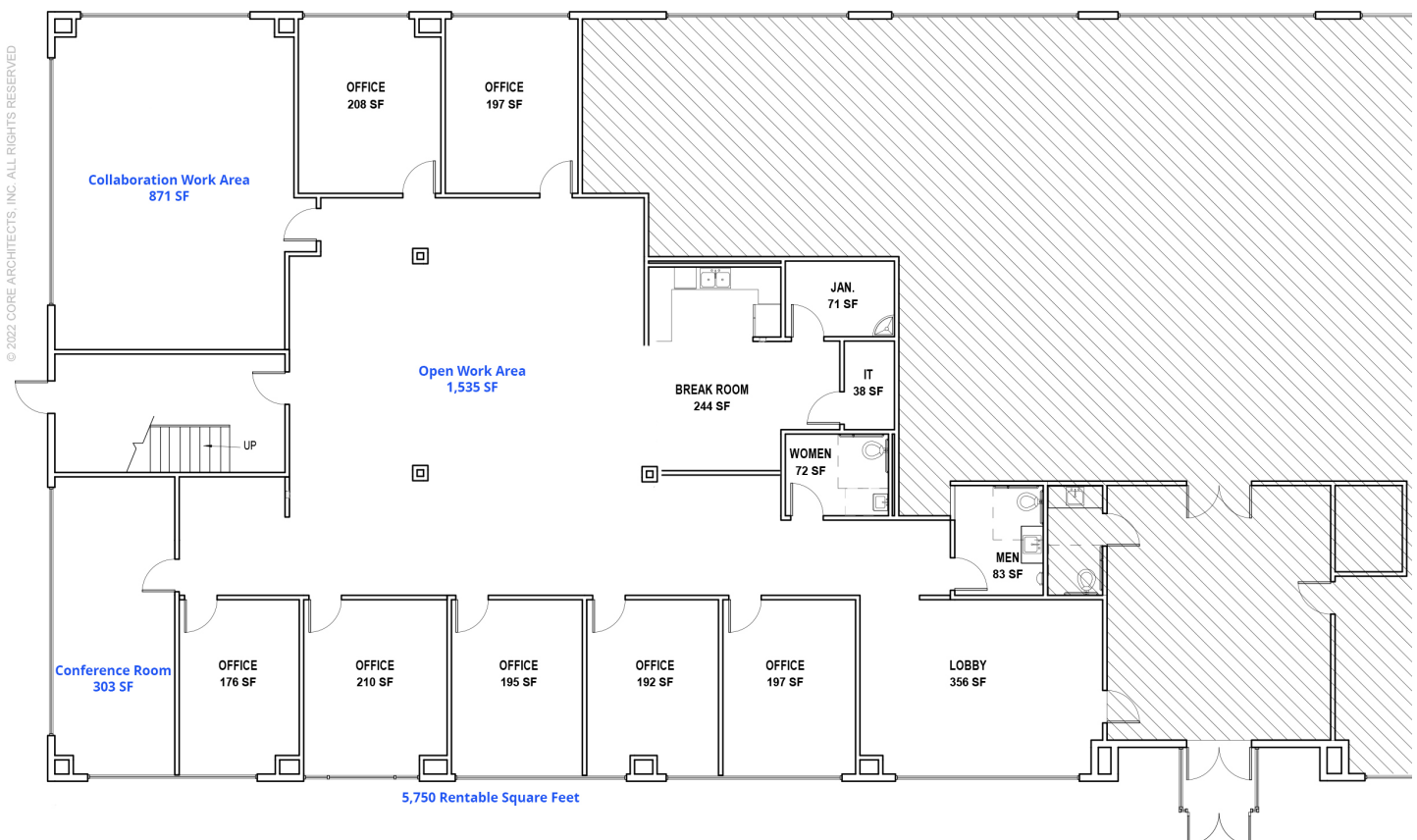


Surrounded by dense
residential, high-income
neighborhoods and retail

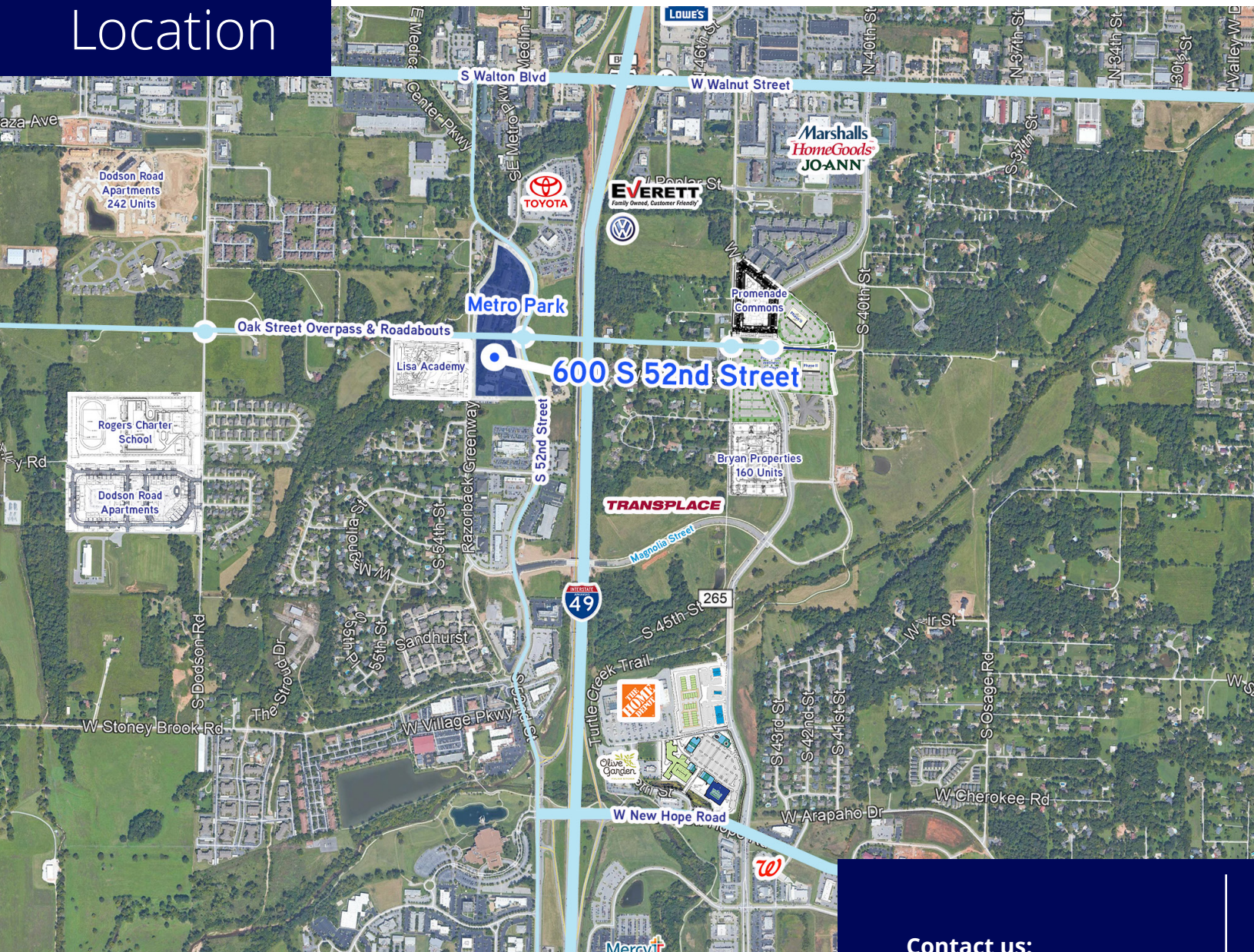


Includes breakroom
with kitchenette and
sitting area

Floor Plan



Location



Contact us:

Wade Smith, SIOR

Brokerage | Arkansas

+1 214 924 1605

wade.smith@ar.colliers.com



Accelerating success.

3503 S 55th Street, Suite 200

Rogers, AR 72758

P: +1 479 636 9000

colliers.com/arkansas

Copyright © 2021 Colliers International.

Information herein has been obtained from sources deemed reliable, however its accuracy cannot be guaranteed. The user is required to conduct their own due diligence and verification.