



FOR SALE

BUSINESS PARK PLAZA

5401 BUSINESS PARK SOUTH #108



**CUSHMAN &
WAKEFIELD**



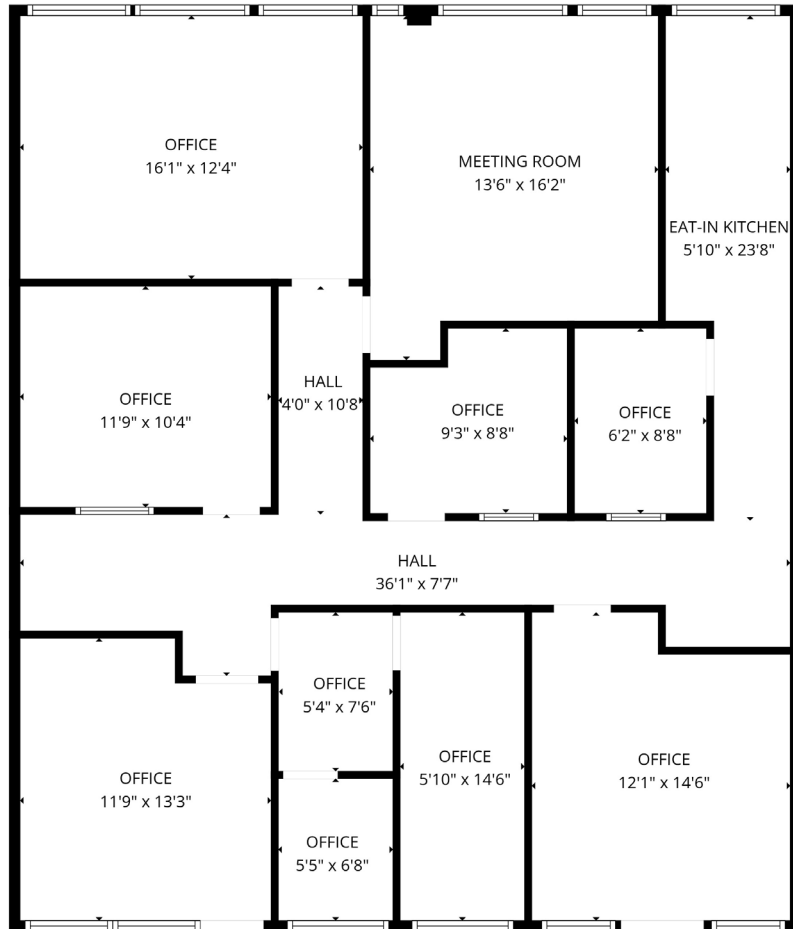
Property Highlights

- Centrally Located Near Highways 99, 58, and the Westside Parkway.
- Walking Distance to Restaurants
- Private Secured/Fenced Corridors
- Newer Solar Panel Systems
- Updated HVAC Systems
- Tranquil Gardens in the Common Areas
- **Rentable SF - 1,632 RSF**
- **Usable SF - 1,512 USF**
- **Asking Price: \$429,000**

Floor Plan

Suite 108

1,632 RSF / 1,512 USF



CONTACT

SCOTT SALTERS

Senior Director

+1 661 204 6725

scott.salters@cushwake.com

Lic. 01709847

ALEX BALFOUR, SIOR

Executive Director

+1 661 304 2521

alex.balfour@cushwake.com

Lic. 01709847

5060 California Avenue

Suite 1000

Bakersfield, CA 93309

Lic. 01880493

cushmanwakefield.com



©2025 Cushman & Wakefield. All rights reserved. The information contained in this communication is strictly confidential. This information has been obtained from sources believed to be reliable but has not been verified. NO WARRANTY OR REPRESENTATION, EXPRESS OR IMPLIED, IS MADE AS TO THE CONDITION OF THE PROPERTY (OR PROPERTIES) REFERENCED HEREIN OR AS TO THE ACCURACY OR COMPLETENESS OF THE INFORMATION CONTAINED HEREIN, AND SAME IS SUBMITTED SUBJECT TO ERRORS, OMISSIONS, CHANGE OF PRICE, RENTAL OR OTHER CONDITIONS, WITHDRAWAL WITHOUT NOTICE, AND TO ANY SPECIAL LISTING CONDITIONS IMPOSED BY THE PROPERTY OWNER(S). ANY PROJECTIONS, OPINIONS OR ESTIMATES ARE SUBJECT TO UNCERTAINTY AND DO NOT SIGNIFY CURRENT OR FUTURE PROPERTY PERFORMANCE.

