



echo

SPACE FOR LEASE

Boutique Class A Office

205 DATURA STREET
WEST PALM BEACH, FLORIDA 33401



CBRE



Highlights

| | |
|--------------------|--|
| ADDRESS | 205 Datura Street, West Palm Beach, Florida 33401 |
| ASKING RATE | \$65.00 NNN |
| OPEX | \$22.90 (Includes electric & janitorial) |
| PARKING | Attached garage has a 3.6/1,000 ratio, leading to an abundance of available parking spaces |
| JOIN THESE TENANTS | Stone Point Capital Sound Point Capital Alta Rock Partners Frost Point Capital Beacon Ridge Capital Management |
| AVAILABILITY | 1,233 - 8,689 SF |



Building Details



Institutional Ownership



Extensive interior & exterior renovations completed



32,400 SF of Class-A office and retail space available



One block from amenity rich Clematis St.



Prestigious downtown West Palm Beach address with near perfect Walk Score® of 98



±13,000 SF floor plates



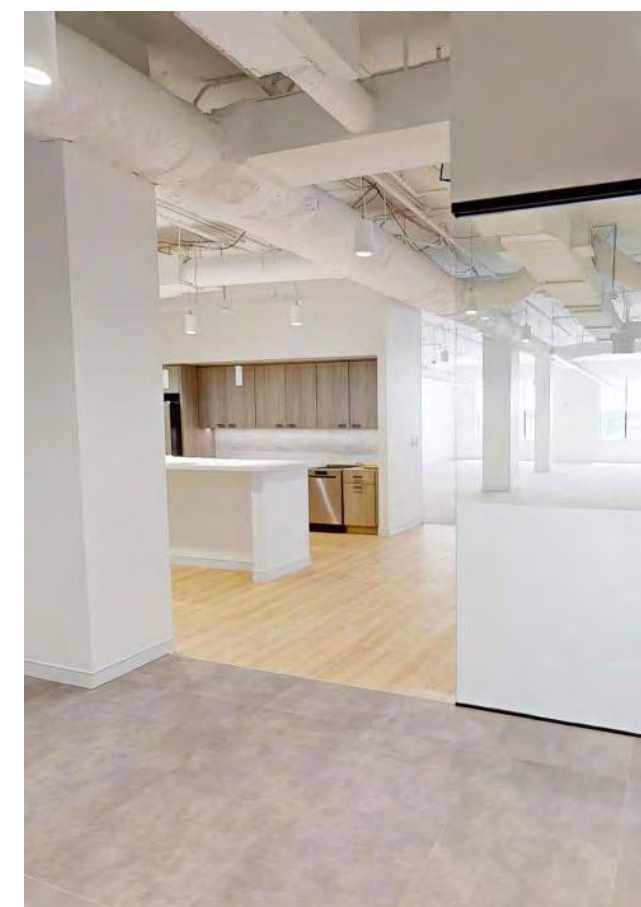
Negotiable tenant improvements



Intracoastal water views



Attached parking garage (3.6/1,000 parking ratio) & reserved parking available



Available Spec Suites

| SUITE NUMBER | RSF | NOTES |
|--------------|----------|------------|
| 210 | 2,863 SF | Spec Suite |
| 220 | 4,567 SF | Spec Suite |
| 310 | 2,637 SF | Spec Suite |
| 320 | 4,372 SF | Spec Suite |



.4 Mile & 6 Minute walk to Brightline Station

 CLEMATIS STREET

POINTS OF INTEREST

RESTAURANTS

- Avocado Grill
- Bodega Taqueria
- Bradleys
- Big Bro Pizza
- Lynora's
- Elisabetta's Ristorante
- Pistache French Bistro
- Spazio
- Paneterie
- Sassafra
- 123 Datura
- Banter Restaurant
- Roccas Tacos
- Starbucks
- Il Bellagio
- Leila Restaurant
- Pubbelly
- Pura Vida
- Sweet Greens
- Publix
- Felice West Palm
- El Camino
- True Food Kitchen
- Waxins

HOTELS

- The Ben
- West Palm Beach Marriott
- Hilton West Palm Beach
- Hyatt Place West Palm Beach
- Canopy by Hilton

TRANSPORTATION

- Brightline Station
- West Palm Airport
- Palm Beach Island
- 1-95





CBRE TEAM:

John Criddle

1 561 283 5176

john.criddle@cbre.com

Joe Freitas

1 561 512 8844

joe.freitas@cbre.com

Max Pawk

1 561 393 1670

max.pawk@cbre.com



CBRE