

KEYWEST PLAZA

700, 720, 734 N GOLDEN KEY ST, GILBERT, AZ

INDUSTRIAL SUITES
FOR LEASE & SUBLEASE



FEATURES

- ±1,621 to 6,712 SF Available for Lease
- 12' x 14' Grade Level Loading
- Air Conditioned Offices
- Evaporative Cooled Warehouse
- Fire Sprinklered
- 16' - 18' Clear Height
- Zoned I-2, Town of Gilbert
- Located Cooper & Guadalupe Rd

 **KEY WEST**
Business Park



COMMERCIAL PROPERTIES INC.

Locally Owned. Globally Connected. CORFAC INTERNATIONAL

TEMPE: 2323 W University Drive, Tempe, AZ 85281 | 480.966.2301
SCOTTSDALE: 8767 E Via de Commercio, Suite 101, Scottsdale, AZ 85258 | www.cpi.az.com

THE LEROY
BREINHOLT
TEAM

KELLI JELINEK
D 480.214.1109
M 480.369.7872
KJELINEK@CPIAZ.COM

CORY SPOSI
D 480.621.4025
M 480.586.1195
CSPOSI@CPIAZ.COM

The information contained herein has been obtained from various sources. We have no reason to doubt its accuracy; however, J & J Commercial Properties, Inc. has not verified such information and makes no guarantee, warranty or representation about such information. The prospective buyer or lessee should independently verify all dimensions, specifications, floor plans, and all information prior to the lease or purchase of the property. All offerings are subject to prior sale, lease, or withdrawal from the market without prior notice.

02 13 26

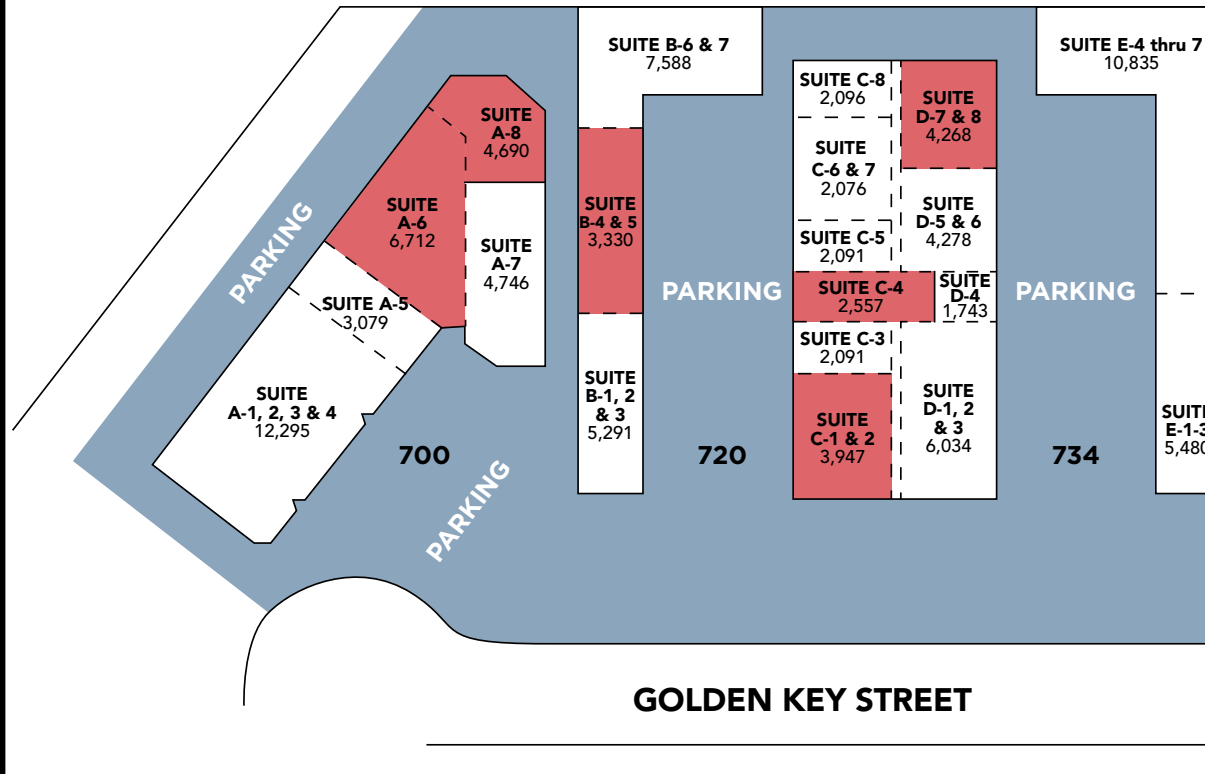
KEYWEST PLAZA

700, 720, 734 N GOLDEN KEY ST, GILBERT, AZ

INDUSTRIAL SUITES
FOR LEASE & SUBLEASE

■ AVAILABLE

KEY WEST Business Park SITE PLAN



SUITE # **SQ FT**
E-1, 2 & 3 **5,480**
E-4 thru 7 **10,835**

SUITE # **SQ FT**
B-1, 2 & 3 **5,291**
B-4 & 5 **3,330**
B-6 & 7 **7,588**

SUITE # **SQ FT**
D-1, 2 & 3 **6,034**
D-4 **1,743**
D-5 & 6 **4,278**
D-7 & 8 **4,268**

SUITE # **SQ FT**
A-1, 2, 3 & 4 **12,295**
A-5 **3,079**
A-6 **6,712**
A-7 **4,746**
A-8 **4,690**

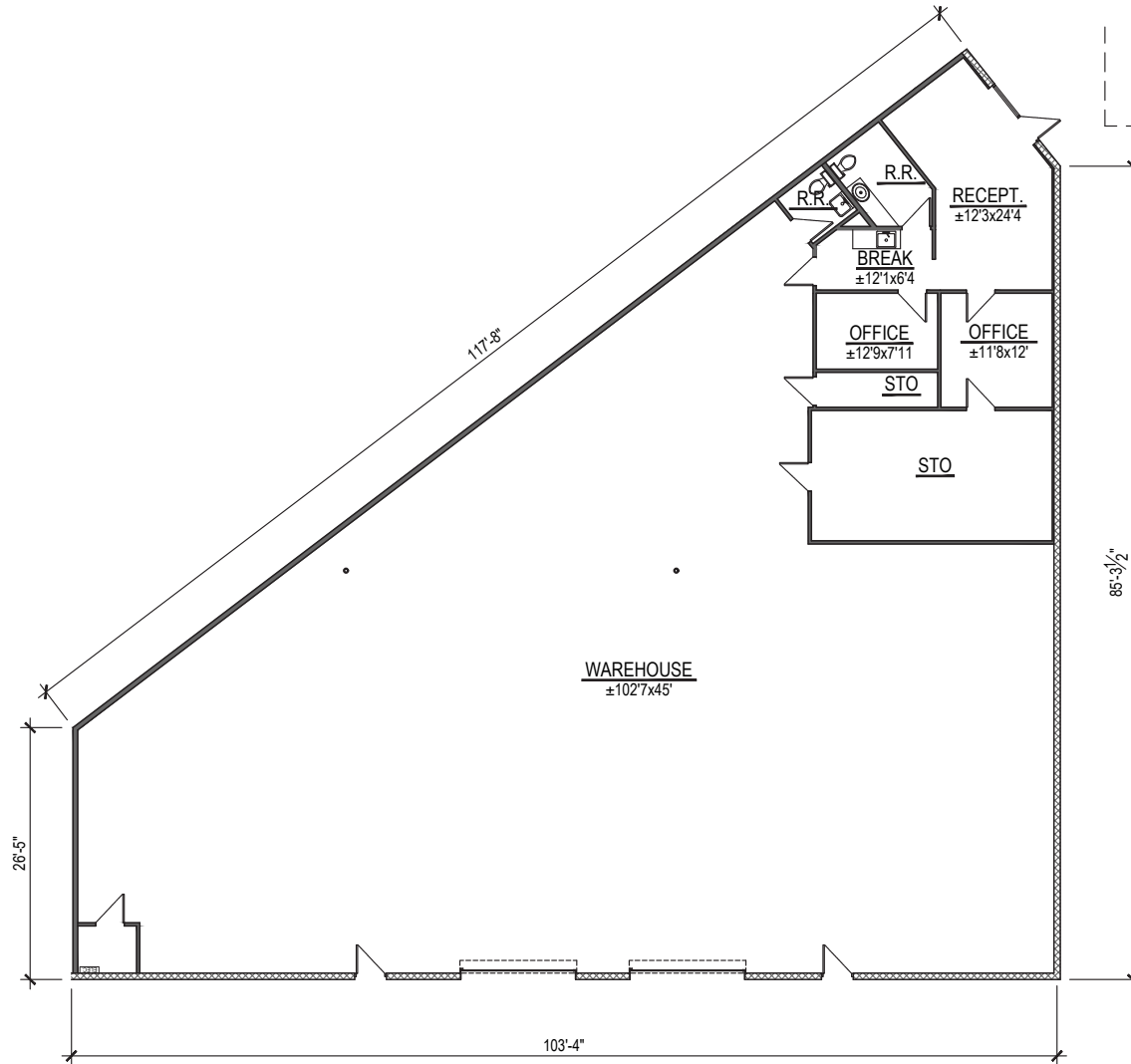
SUITE # **SQ FT**
C-1 & 2 **3,947**
C-3 **2,091**
C-4 **2,557**
C-5 **2,089**
C-6 & 7 **4,311**
C-8 **2,096**

KEYWEST PLAZA

700, 720, 734 N GOLDEN KEY ST, GILBERT, AZ

INDUSTRIAL SUITES
FOR LEASE & SUBLEASE

700 N GOLDEN KEY ST
SUITE A6 | 6,712 SF



COMMERCIAL PROPERTIES INC.

Locally Owned. Globally Connected. CORFAC INTERNATIONAL

TEMPE: 2323 W University Drive, Tempe, AZ 85281 | 480.966.2301
SCOTTSDALE: 8767 E Via de Commercio, Suite 101, Scottsdale, AZ 85258 | www.cpi.az.com

THE LEROY
BREINHOLT
TEAM

KELLI JELINEK
D 480.214.1109
M 480.369.7872
KJELINEK@CPIAZ.COM

CORY SPOSI
D 480.621.4025
M 480.586.1195
CSPOSI@CPIAZ.COM

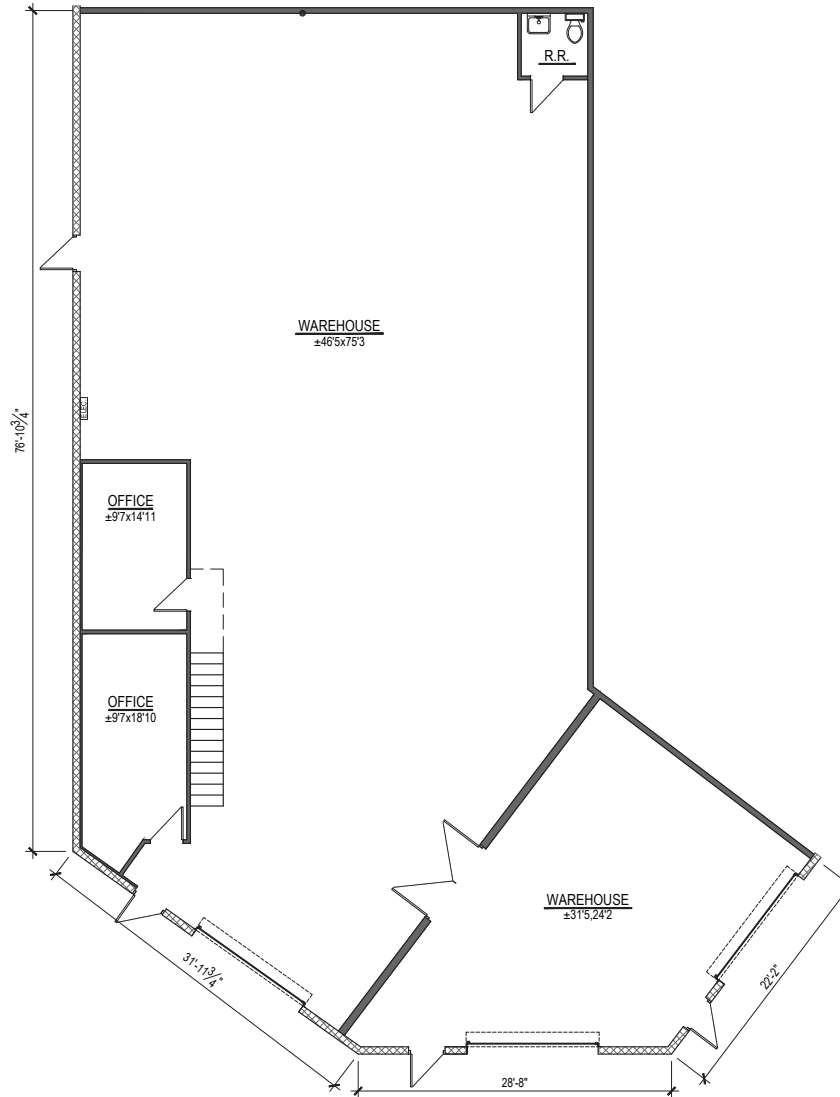
The information contained herein has been obtained from various sources. We have no reason to doubt its accuracy; however, J & J Commercial Properties, Inc. has not verified such information and makes no guarantee, warranty or representation about such information. The prospective buyer or lessee should independently verify all dimensions, specifications, floor plans, and all information prior to the lease or purchase of the property. All offerings are subject to prior sale, lease, or withdrawal from the market without prior notice.

KEYWEST PLAZA

700, 720, 734 N GOLDEN KEY ST, GILBERT, AZ

INDUSTRIAL SUITES
FOR LEASE & SUBLEASE

700 N GOLDEN KEY ST
SUITE A8 | 4,690 SF



COMMERCIAL PROPERTIES INC.

Locally Owned. Globally Connected. CORFAC INTERNATIONAL

TEMPE: 2323 W University Drive, Tempe, AZ 85281 | 480.966.2301
SCOTTSDALE: 8767 E Via de Commercio, Suite 101, Scottsdale, AZ 85258 | www.cpi.az.com

THE LEROY
BREINHOLT
TEAM

KELLI JELINEK
D 480.214.1109
M 480.369.7872
KJELINEK@CPIAZ.COM

CORY SPOSI
D 480.621.4025
M 480.586.1195
CSPOSI@CPIAZ.COM

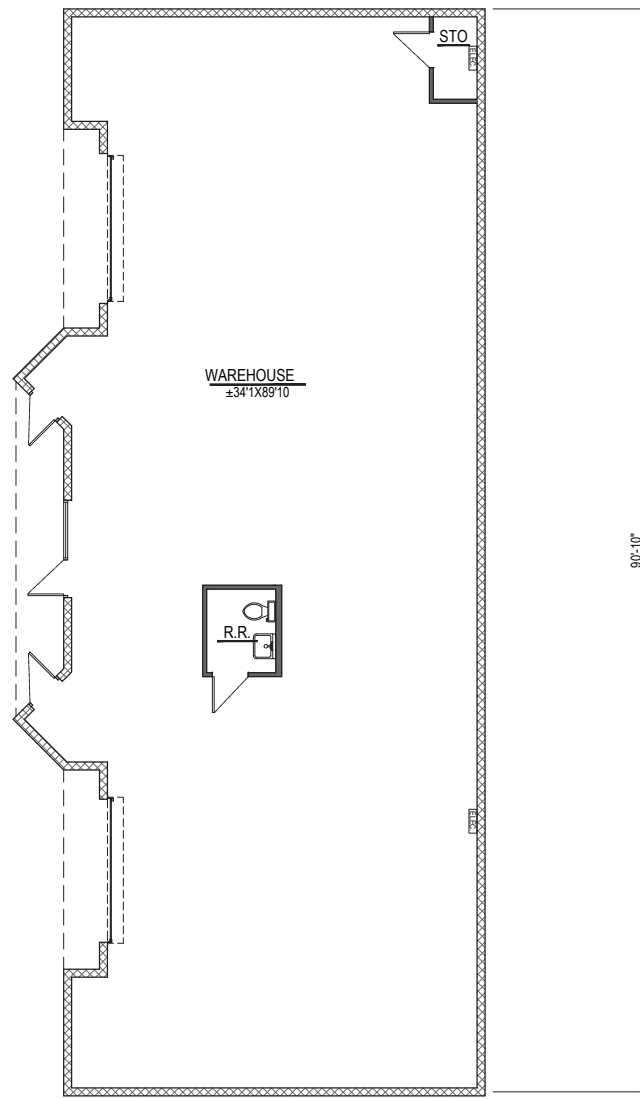
The information contained herein has been obtained from various sources. We have no reason to doubt its accuracy; however, J & J Commercial Properties, Inc. has not verified such information and makes no guarantee, warranty or representation about such information. The prospective buyer or lessee should independently verify all dimensions, specifications, floor plans, and all information prior to the lease or purchase of the property. All offerings are subject to prior sale, lease, or withdrawal from the market without prior notice.

KEYWEST PLAZA

700, 720, 734 N GOLDEN KEY ST, GILBERT, AZ

INDUSTRIAL SUITES
FOR LEASE & SUBLEASE

**720 N GOLDEN KEY ST
SUITE B-4 & 5 | 3,330 SF
AVAILABLE 5/1/26**

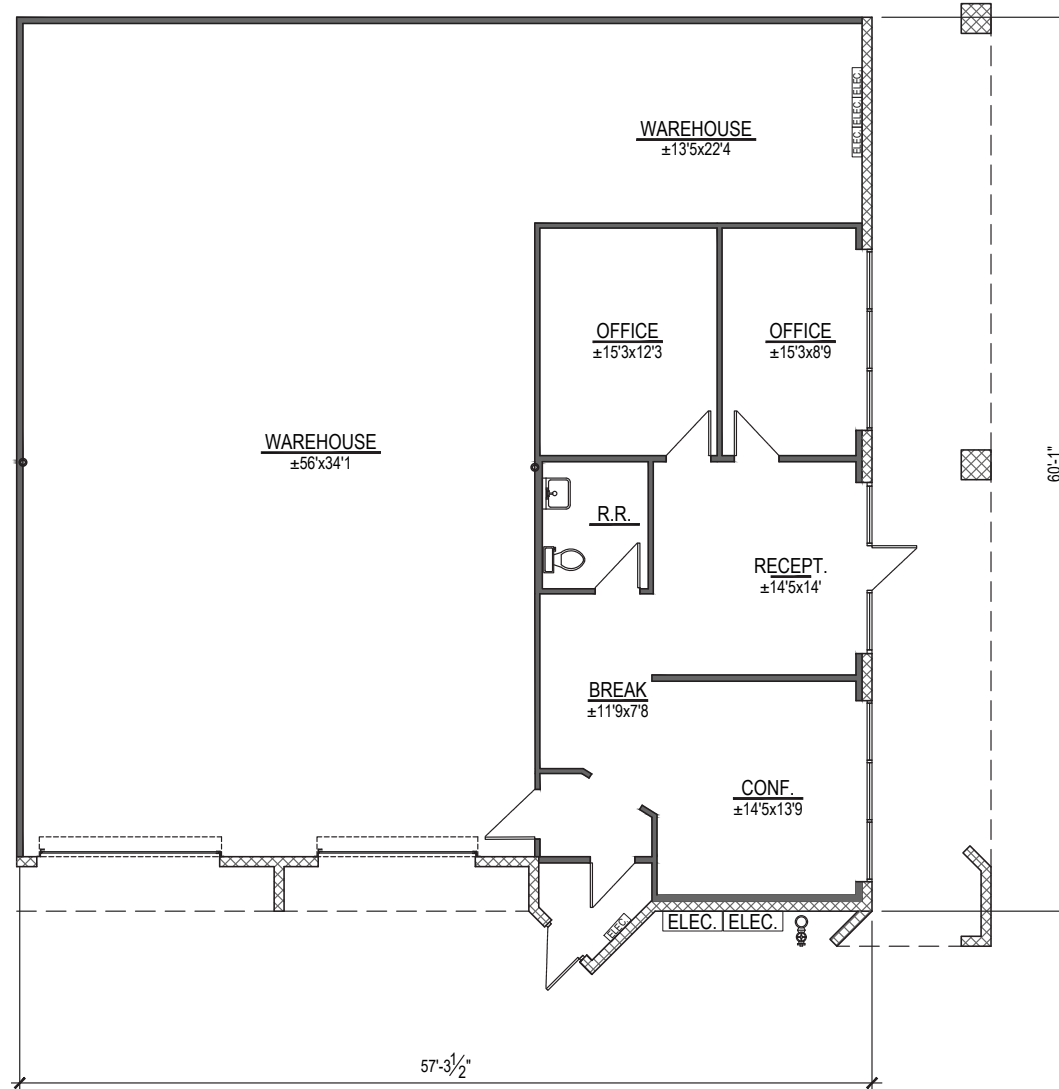


KEYWEST PLAZA

700, 720, 734 N GOLDEN KEY ST, GILBERT, AZ

INDUSTRIAL SUITES
FOR LEASE & SUBLEASE

720 N GOLDEN KEY ST
SUITE C1-2 | 3,947 SF



COMMERCIAL PROPERTIES INC.

Locally Owned. Globally Connected. CORFAC INTERNATIONAL

TEMPE: 2323 W University Drive, Tempe, AZ 85281 | 480.966.2301
SCOTTSDALE: 8767 E Via de Commercio, Suite 101, Scottsdale, AZ 85258 | www.cpi.az.com

THE LEROY
BREINHOLT
TEAM

KELLI JELINEK
D 480.214.1109
M 480.369.7872
KJELINEK@CPIAZ.COM

CORY SPOSI
D 480.621.4025
M 480.586.1195
CSPOSI@CPIAZ.COM

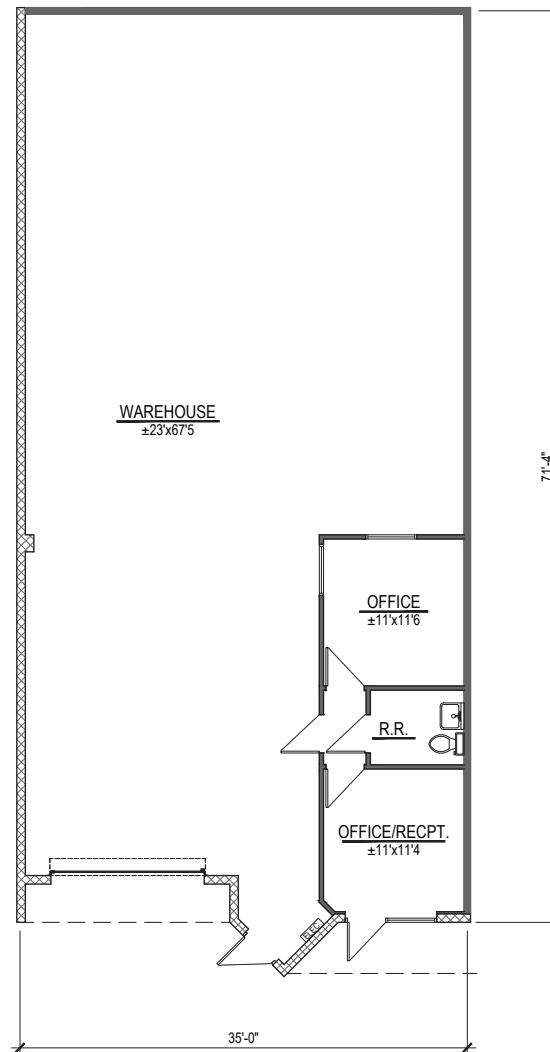
The information contained herein has been obtained from various sources. We have no reason to doubt its accuracy; however, J & J Commercial Properties, Inc. has not verified such information and makes no guarantee, warranty or representation about such information. The prospective buyer or lessee should independently verify all dimensions, specifications, floor plans, and all information prior to the lease or purchase of the property. All offerings are subject to prior sale, lease, or withdrawal from the market without prior notice.

KEYWEST PLAZA

700, 720, 734 N GOLDEN KEY ST, GILBERT, AZ

INDUSTRIAL SUITES
FOR LEASE & SUBLEASE

720 N GOLDEN KEY ST
SUITE C4 | 2,557 SF



TEMPE: 2323 W University Drive, Tempe, AZ 85281 | 480.966.2301
SCOTTSDALE: 8767 E Via de Commercio, Suite 101, Scottsdale, AZ 85258 | www.cpi.az.com

THE LEROY
BREINHOLT
TEAM

KELLI JELINEK
D 480.214.1109
M 480.369.7872
KJELINEK@CPIAZ.COM

CORY SPOSI
D 480.621.4025
M 480.586.1195
CSPOSI@CPIAZ.COM

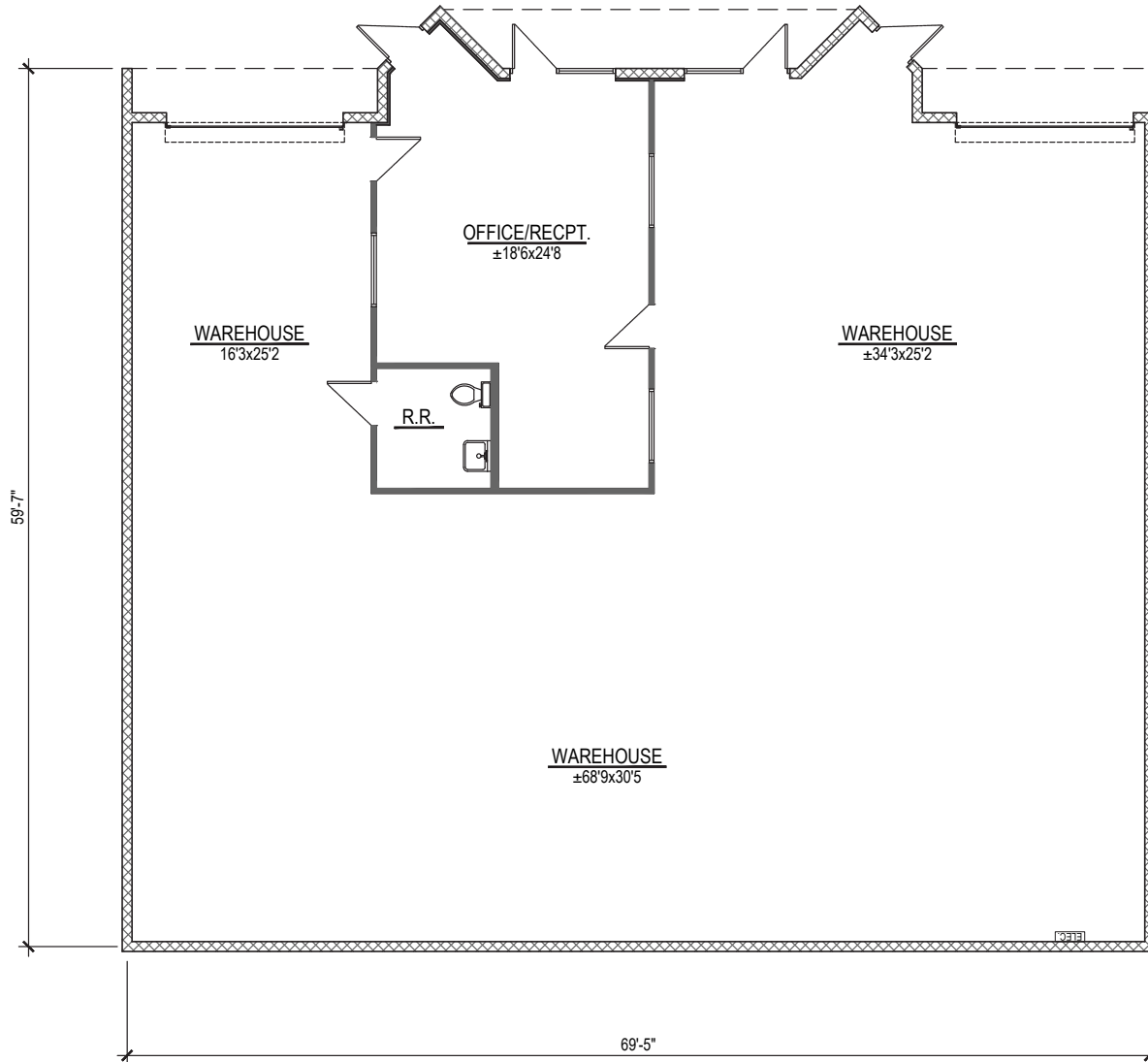
The information contained herein has been obtained from various sources. We have no reason to doubt its accuracy; however, J & J Commercial Properties, Inc. has not verified such information and makes no guarantee, warranty or representation about such information. The prospective buyer or lessee should independently verify all dimensions, specifications, floor plans, and all information prior to the lease or purchase of the property. All offerings are subject to prior sale, lease, or withdrawal from the market without prior notice.

KEYWEST PLAZA

700, 720, 734 N GOLDEN KEY ST, GILBERT, AZ

INDUSTRIAL SUITES
FOR LEASE & SUBLEASE

734 N GOLDEN KEY ST
SUITE D7 & 8 | 4,268 SF



COMMERCIAL PROPERTIES INC.

Locally Owned. Globally Connected. CORFAC INTERNATIONAL

TEMPE: 2323 W University Drive, Tempe, AZ 85281 | 480.966.2301
SCOTTSDALE: 8767 E Via de Commercio, Suite 101, Scottsdale, AZ 85258 | www.cpi.az.com

THE LEROY
BREINHOLT
TEAM

KELLI JELINEK

D 480.214.1109
M 480.369.7872
KJELINEK@CPIAZ.COM

CORY SPOSI

D 480.621.4025
M 480.586.1195
CSPOSI@CPIAZ.COM

The information contained herein has been obtained from various sources. We have no reason to doubt its accuracy; however, J & J Commercial Properties, Inc. has not verified such information and makes no guarantee, warranty or representation about such information. The prospective buyer or lessee should independently verify all dimensions, specifications, floor plans, and all information prior to the lease or purchase of the property. All offerings are subject to prior sale, lease, or withdrawal from the market without prior notice.