



RETAIL SPACE FOR LEASE
**THE SHOPS AT
ARBOR WALK**
10515 N Mopac Expy, Austin, TX 78759



Shopping Center Overview

- 450,000 SF open air Lifestyle power shopping center serving North Austin communities and offering more than 30 stores and eateries
- Conveniently located at the intersection of N. MoPac Expressway and Braker Lane
- **Next to the DOMAIN**
- Excellent Freeway Visibility
- Pylon Signage Available
- Call for Pricing

Available Space

- ±1,000 SF & 1,167 SF In-Line Spaces

Demographics

	1 mile	3 miles	5 miles
2023 Population	8,933	123,826	305,860
Daytime Pop.	31,099	186,487	384,356
Households	6,064	58,570	139,376
Avg. HH Income	\$117,230	\$110,857	\$115,944

Traffic Counts

MoPac Expressway: 138,799 VPD (TXDOT 2021)
W Braker Lane: 27,035 VPD (TXDOT 2020)

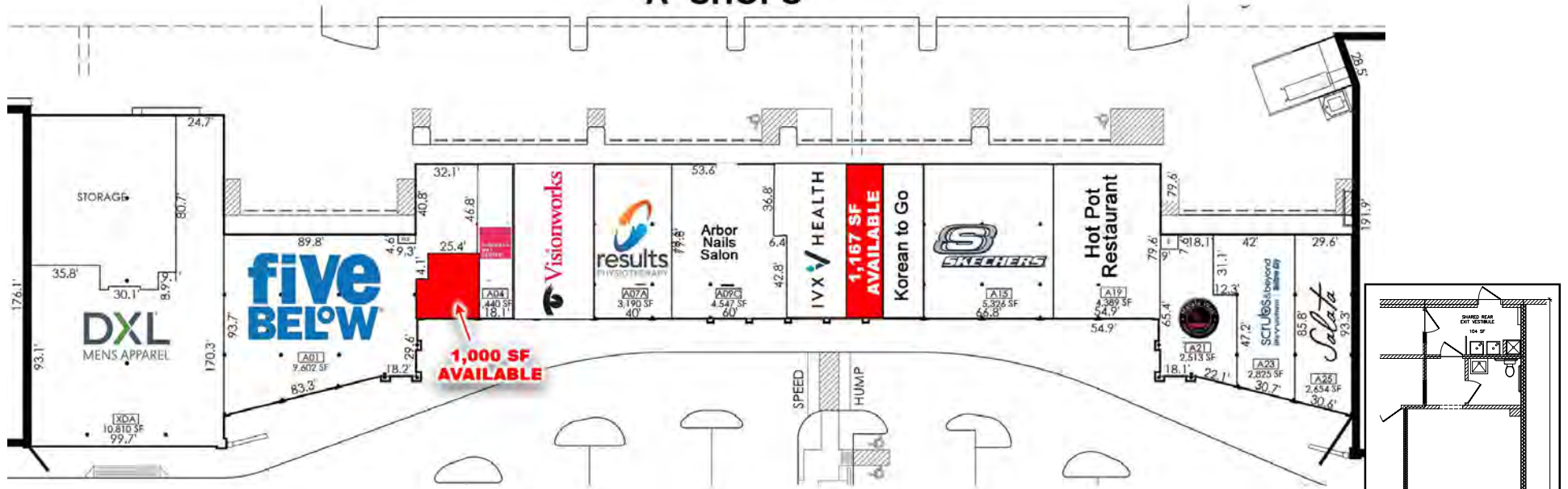


Current Tenants



Bo Avery
(972) 480-1788
bo@trimarsh.com

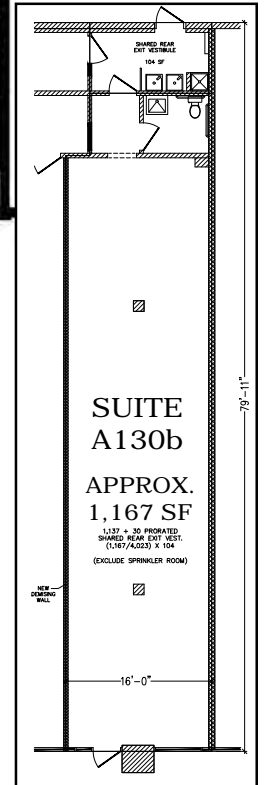
"A" SHOPS



"B" SHOPS

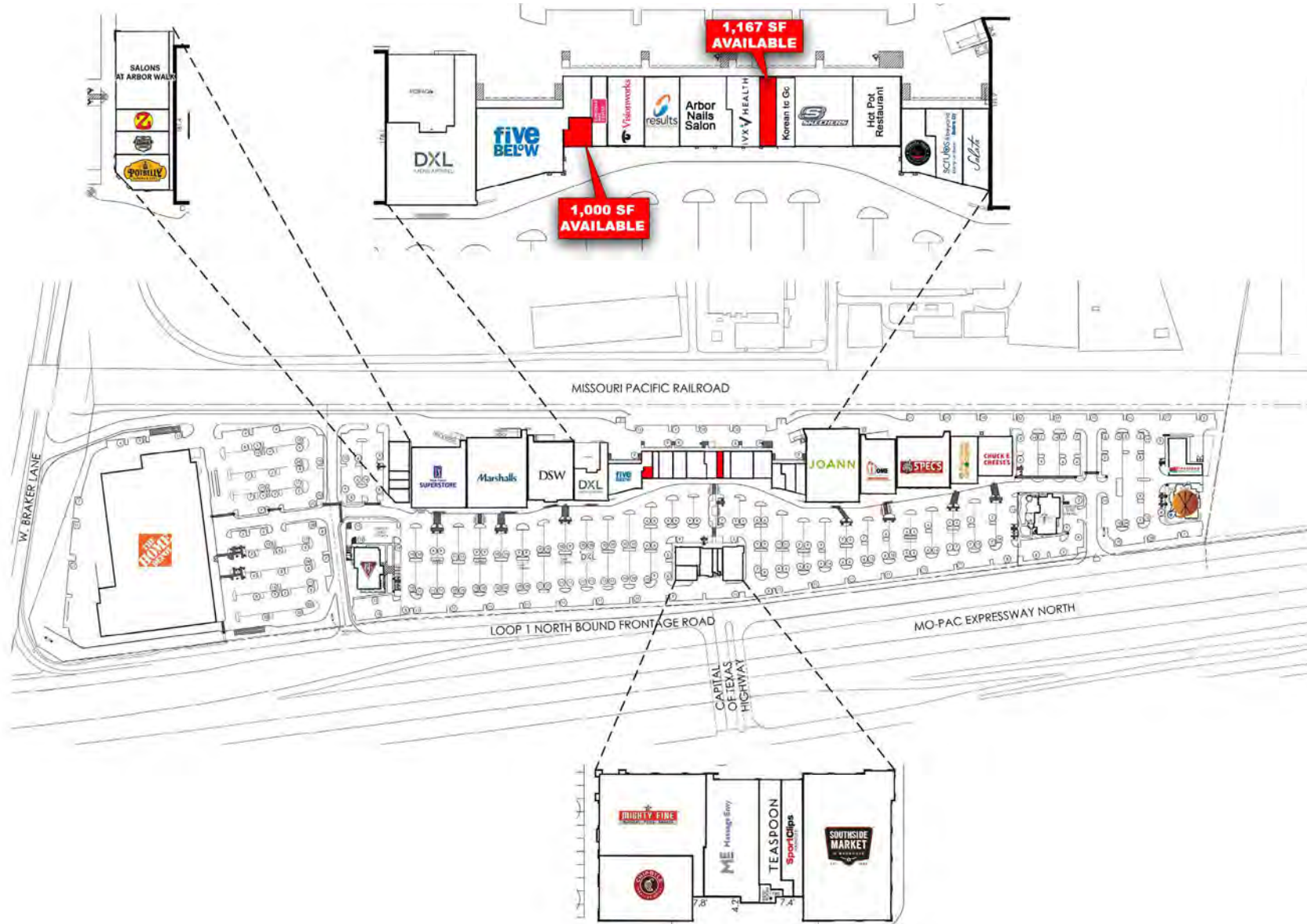


"C" SHOPS



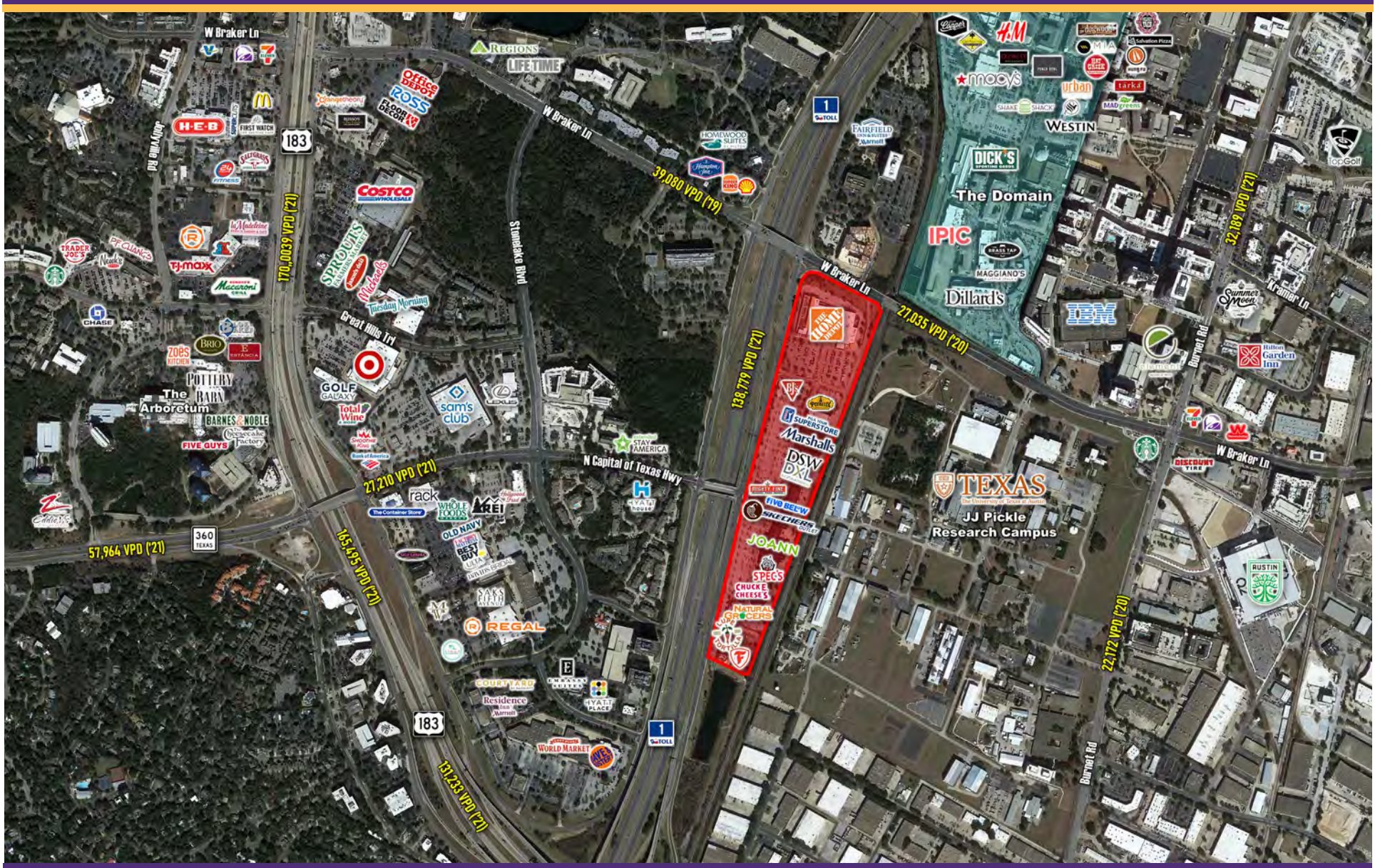
Bo Avery
(972) 480-1788
bo@trimarsh.com

The information contained herein was obtained from sources deemed reliable; however, no guarantees, warranties or representations are made as to the completeness or accuracy thereof. The presentation of this real estate information is subject to errors, omissions, change of price, prior sale or lease or withdrawal without notice.



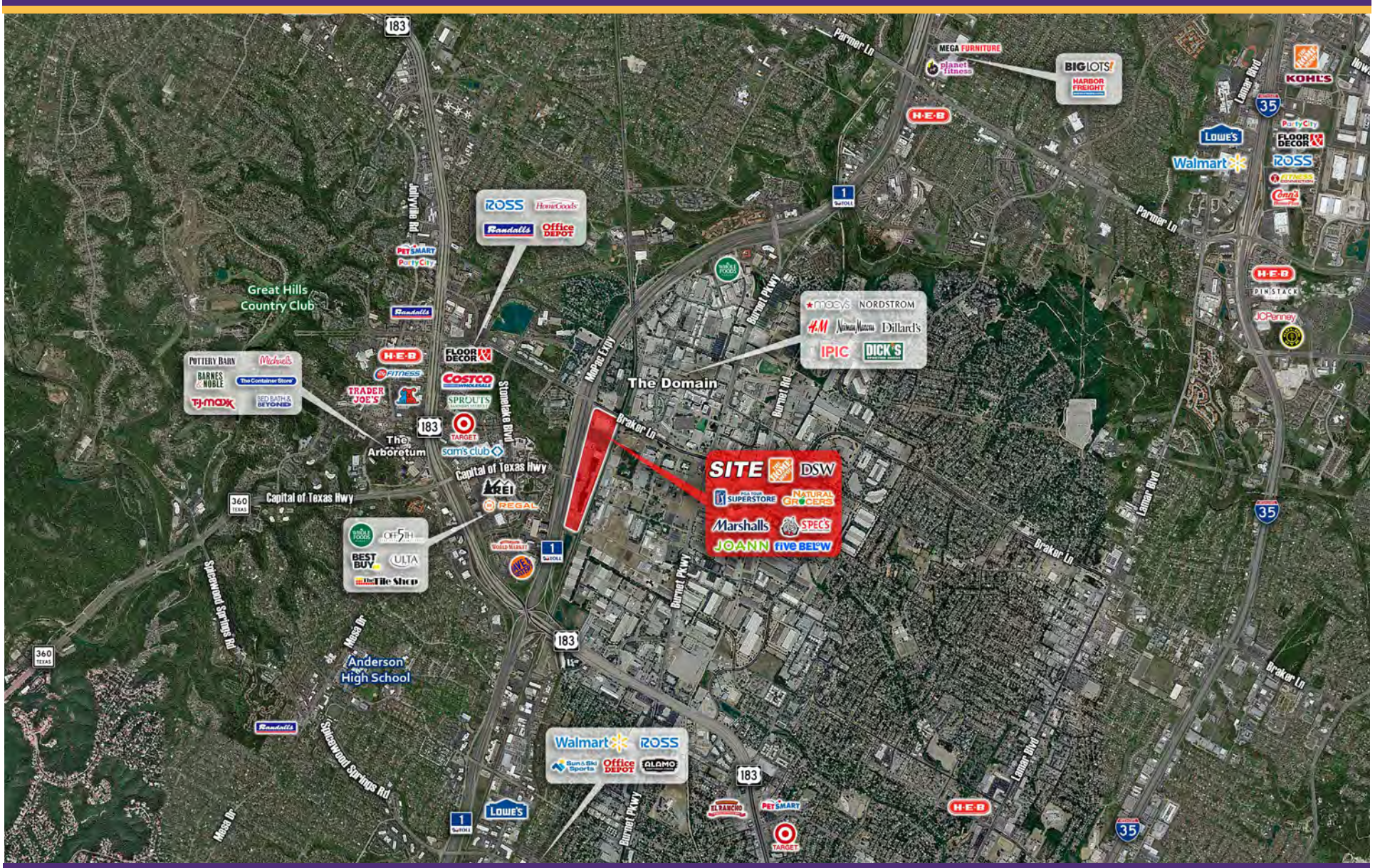
Bo Avery
(972) 480-1788
bo@trimarsh.com

The information contained herein was obtained from sources deemed reliable; however, no guarantees, warranties or representations are made as to the completeness or accuracy thereof. The presentation of this real estate information is subject to errors, omissions, change of price, prior sale or lease or withdrawal without notice.



Bo Avery
(972) 480-1788
bo@trimarsh.com

The information contained herein was obtained from sources deemed reliable; however, no guarantees, warranties or representations are made as to the completeness or accuracy thereof. The presentation of this real estate information is subject to errors, omissions, change of price, prior sale or lease or withdrawal without notice.



Bo Avery
(972) 480-1788
bo@trimarsh.com

The information contained herein was obtained from sources deemed reliable; however, no guarantees, warranties or representations are made as to the completeness or accuracy thereof. The presentation of this real estate information is subject to errors, omissions, change of price, prior sale or lease or withdrawal without notice.