

# Kansas Commerce Center

15325 W 95th Street  
Lenexa, KS

## Building 5A



### Property Details

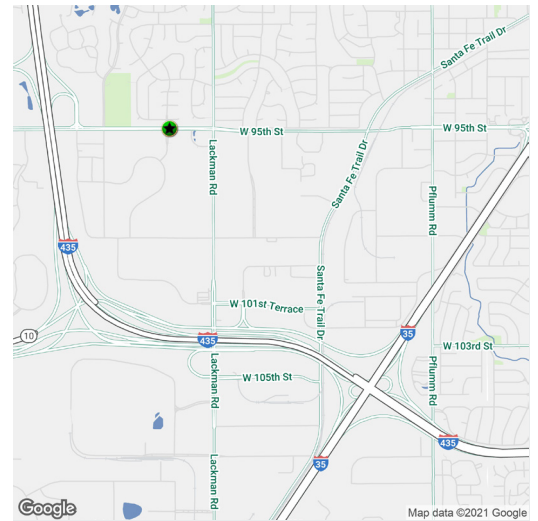
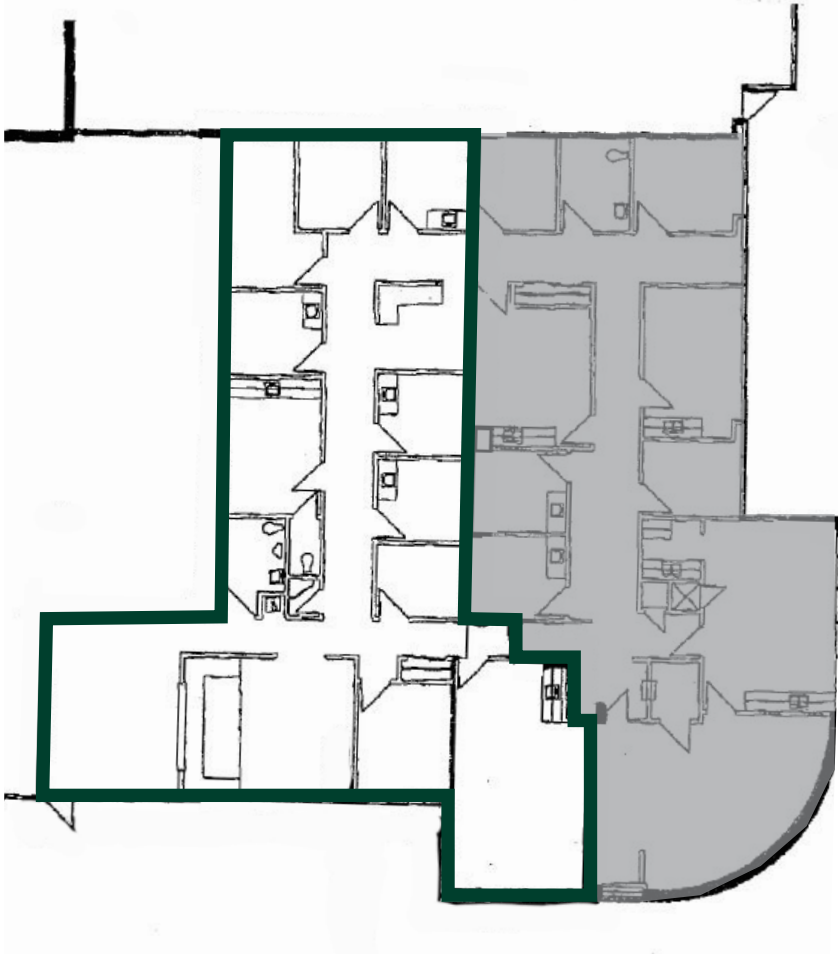
+ 2,418+/- SF Available

- 100% Office

+ 1 Drive In Door

+ 14' Clear Height

# Floor Plan



## Contact Us

**Austin Baier**  
Senior Vice President  
+1 816 968 5841  
austin.baier@cbre.com

**Ben Whetstone**  
Associate  
+1 816 968 5809  
ben.whetstone@cbre.com

© 2022 CBRE, Inc. All rights reserved. This information has been obtained from sources believed reliable, but has not been verified for accuracy or completeness. You should conduct a careful, independent investigation of the property and verify all information. Any reliance on this information is solely at your own risk. CBRE and the CBRE logo are service marks of CBRE, Inc. All other marks displayed on this document are the property of their respective owners, and the use of such logos does not imply any affiliation with or endorsement of CBRE. Photos herein are the property of their respective owners. Use of these images without the express written consent of the owner is prohibited.