

PAYSON STREET-LEVEL RETAIL

20 South 100 West • Payson, Utah 84651



HIGHLIGHTS

- 1,000 TO 3,200 SF
- LEASE RATE: \$18 PSF NNN
- AVAILABLE IMMEDIATELY
- 12 RETAIL SPECIFIC PARKING STALLS

CONNOR DEBRY

801.557.9119 | cdebry@legendcommercial.com

ALEX DEBRY

801.556.1421 | adebry@legendcommercial.com

PARTNER **XTEAM**
RETAIL ADVISORS

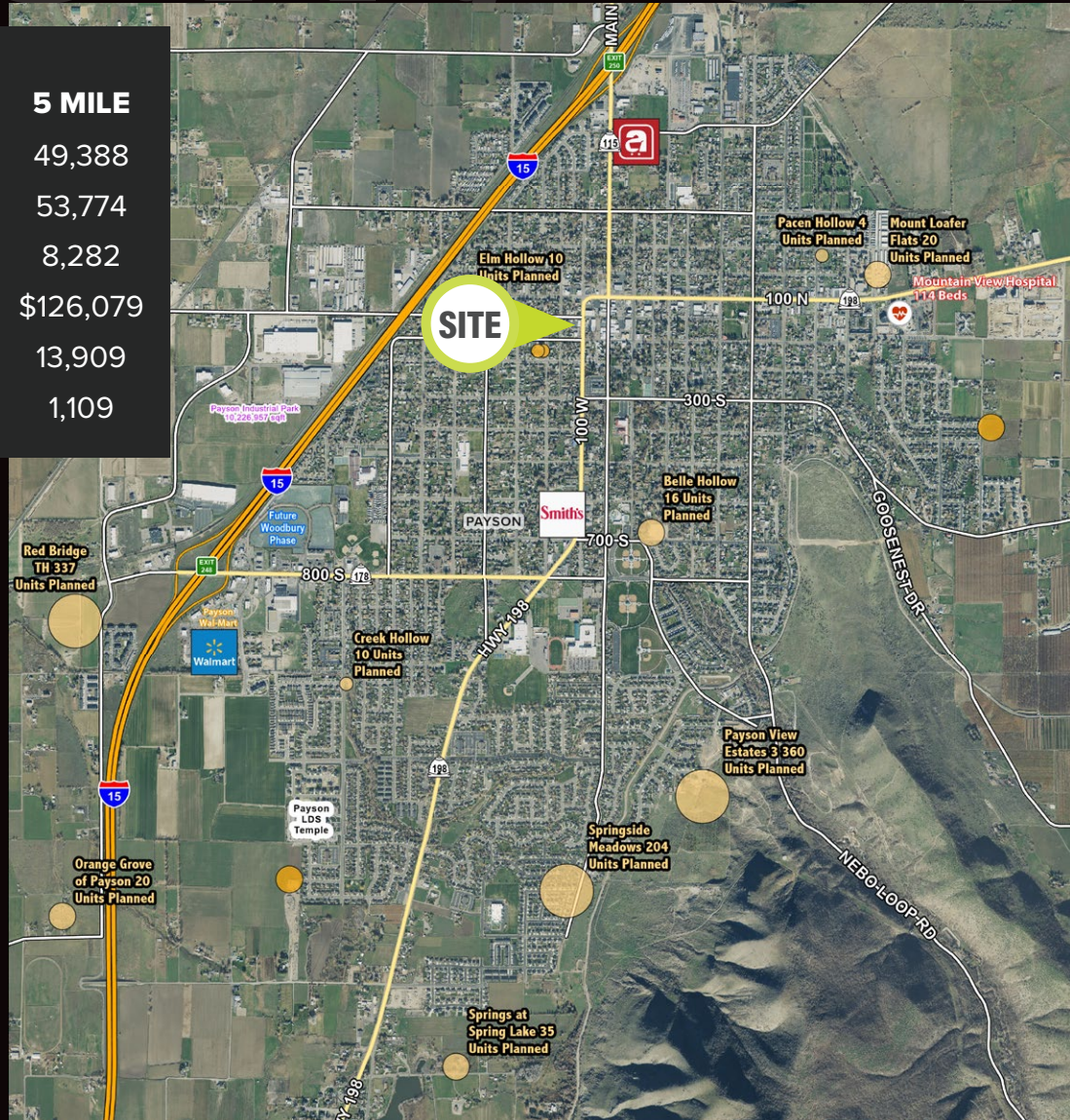
LEGEND
PARTNERS ■■■■

801.930.6750 | www.legendllp.com
2180 S 1300 E, Suite 240 | Salt Lake City, UT 84106

LOCATION

DEMOGRAPHICS

	1 MILE	3 MILE	5 MILE
2024 EST. POPULATION	11,572	28,461	49,388
2029 PROJECTED POPULATION	12,424	30,440	53,774
2024 EST. DAYTIME POPULATION	2,639	6,236	8,282
2024 EST. AVG HH INCOME	\$105,630	\$114,220	\$126,079
2024 EST. HOUSEHOLDS	3,612	8,283	13,909
2024 EST. BUSINESSES	325	690	1,109



CONNOR DEBRY

801.557.9119 | cdebry@legendcommercial.com

ALEX DEBRY

801.556.1421 | adebry@legendcommercial.com



801.930.6750 | www.legendllp.com
2180 S 1300 E, Suite 240 | Salt Lake City, UT 84106



SITE

CONNOR DEBRY

801.557.9119 | cdebry@legendcommercial.com

ALEX DEBRY

801.556.1421 | adebry@legendcommercial.com

PARTNER XTEAM
RETAIL ADVISORS

LEGEND
PARTNERS

801.930.6750 | www.legendllp.com
2180 S 1300 E, Suite 240 | Salt Lake City, UT 84106