



30,000± SF CLASS "A" OFFICE & RETAIL FOR LEASE

1100 N Orange Ave, Winter Park, FL 32789

AVAILABLE Q4 2025

Only 30% remains
available to lease

PROPERTY HIGHLIGHTS

- Class A design and finishes throughout
- Shell Delivery before end of the year
- Over 68% of the project pre-leased
- First floor retail and second floor office space remain available
- Exceptional parking ratio for downtown Winter Park
- Prominently located on the Orange Avenue Gateway into historic downtown Winter Park
- Adjacent to Seven Oaks Park with direct balcony visibility to the park



ASKING RATE:

Contact broker for details



SQUARE FOOTAGE:

30,000± rsf



TOTAL LAND AREA:

1.88±



PARKING:

102 surface spaces



ZONING:

O-1



YEAR BUILT:

Q4 2025



DAMIEN MADSEN

dmadsen@harbertrealty.com | 407.256.2844

JOSH SMITH

jsmith@harbertrealty.com | 407.377.4050

For More Information: HarbertRealty.com
400 S Park Ave, Suite 225, Winter Park, FL 32789

CLASS "A" OFFICE & RETAIL FOR LEASE

1100 N Orange Ave, Winter Park, FL 32789

SITE PLAN



CLASS "A" OFFICE & RETAIL FOR LEASE

1100 N Orange Ave, Winter Park, FL 32789

PROGRESS PHOTOS



HARBERT
REALTY SERVICES

DAMIEN MADSEN
dmadsen@harbertrealty.com
407.256.2844

JOSH SMITH
jsmith@harbertrealty.com
407.377.4050

For More Information: HarbertRealty.com
400 S Park Ave, Suite 225, Winter Park, FL 32789

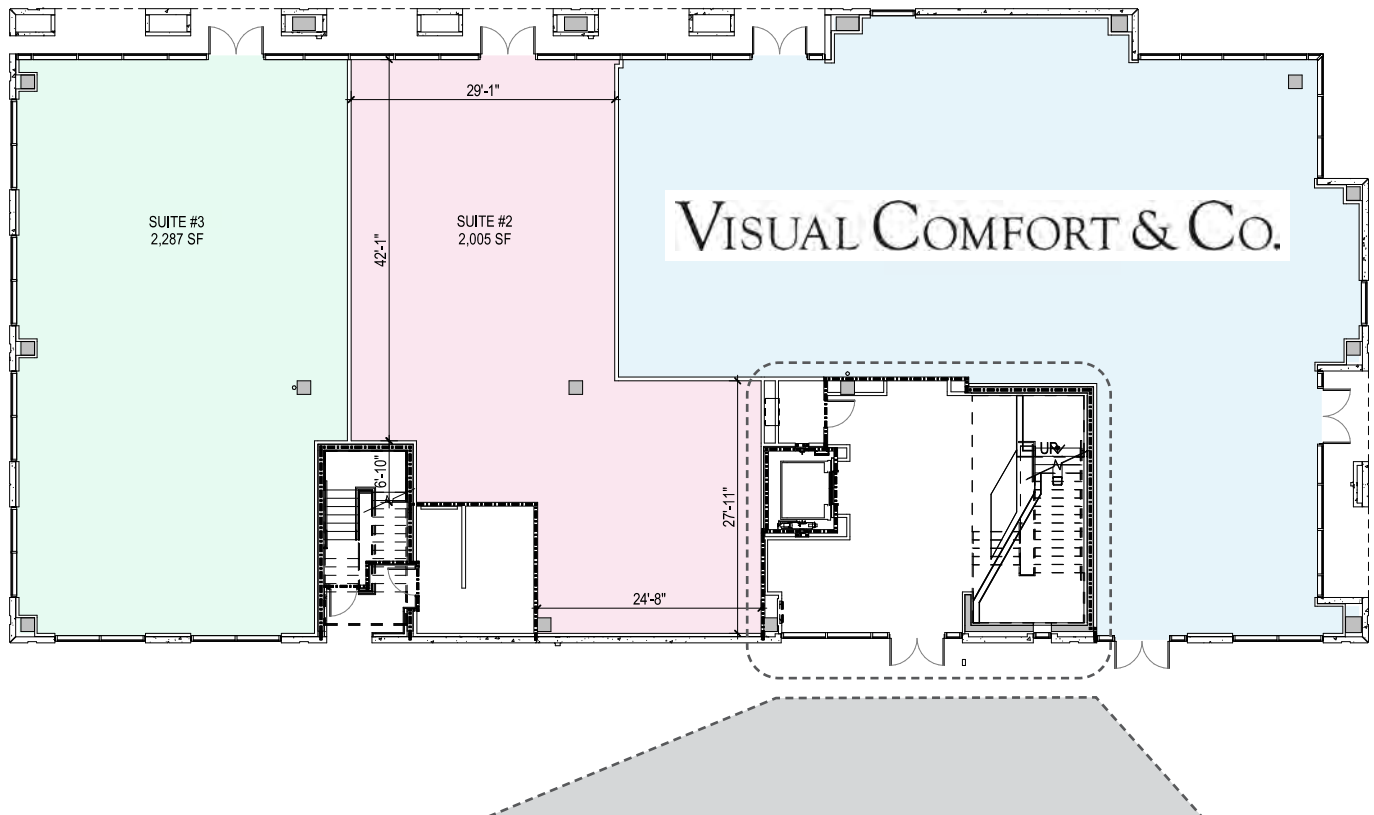


CLASS "A" OFFICE & RETAIL FOR LEASE

1100 N Orange Ave, Winter Park, FL 32789

FIRST FLOOR RETAIL

Available:
2,005–4,292 ± rsf



LOBBY FINISH RENDERINGS



DAMIEN MADSEN
dmadsen@harbertrealty.com
407.256.2844

JOSH SMITH
jsmith@harbertrealty.com
407.377.4050

For More Information: HarbertRealty.com
400 S Park Ave, Suite 225, Winter Park, FL 32789

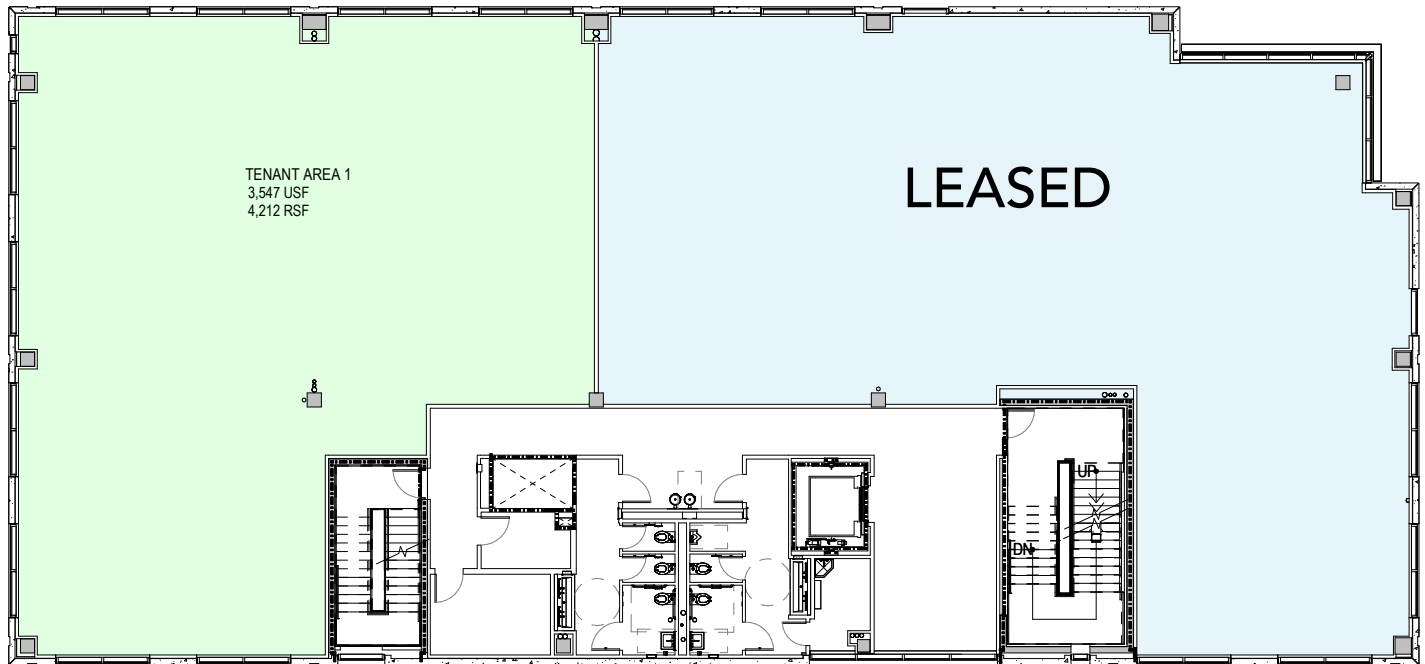


CLASS "A" OFFICE & RETAIL FOR LEASE

1100 N Orange Ave, Winter Park, FL 32789

SECOND FLOOR
OFFICE

Available:
4,212± rsf



DAMIEN MADSEN
dmadsen@harbertrealty.com
407.256.2844

JOSH SMITH
jsmith@harbertrealty.com
407.377.4050

For More Information: HarbertRealty.com
400 S Park Ave, Suite 225, Winter Park, FL 32789



CLASS "A" OFFICE & RETAIL FOR LEASE

1100 N Orange Ave, Winter Park, FL 32789

AREA OVERVIEW



DRIVE TIMES

- 2 minutes**
to Park Avenue
- 6 minutes**
to Interstate 4
- 11 minutes**
to Downtown Orlando
- 14 minutes**
to Orlando Executive Airport
- 31 minutes**
to Orlando International Airport



DAMIEN MADSEN
dmadsen@harbertrealty.com
407.256.2844

JOSH SMITH
jsmith@harbertrealty.com
407.377.4050

For More Information: HarbertRealty.com
400 S Park Ave, Suite 225, Winter Park, FL 32789



CLASS "A" OFFICE & RETAIL FOR LEASE

1100 N Orange Ave, Winter Park, FL 32789

DEMOGRAPHICS

