

19371 VAN DYKE AVENUE
DETROIT, MICHIGAN

RETAIL/LAND FOR SALE
720 Square Feet / .50 Acre



**SIGNATURE
ASSOCIATES**
KNOW SIGNATURE | KNOW RESULTS



PROPERTY FEATURES

- 720 square feet available
- Located on 0.50 acre
- Zoned B-4
- 14' ceiling height
- Asking Price: \$90,000 (\$125.00/sq. ft.)

Comments: Structure needs to be rebuilt.
Contact brokers for more details.



For more information, please contact:

JOE STACK
(248) 359 0615
jstack@signatureassociates.com

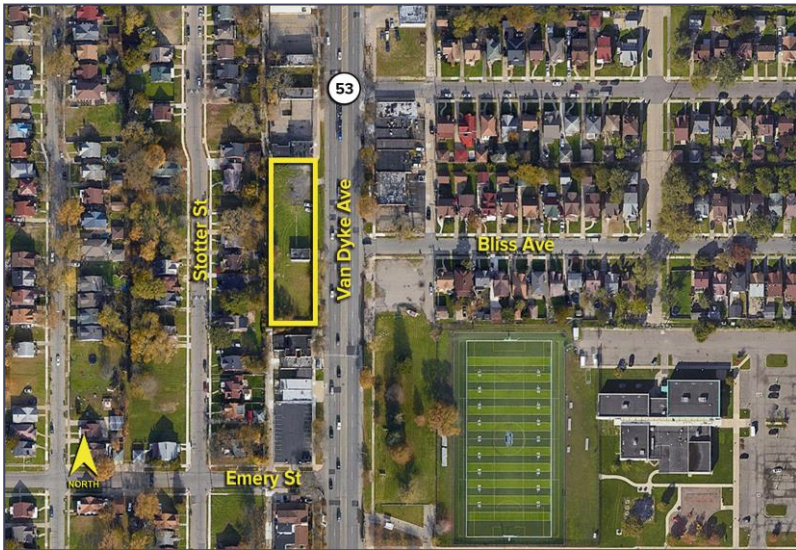
PAUL SAAD
(248) 359 0652
psaad@signatureassociates.com

SIGNATURE ASSOCIATES
One Towne Square, Suite 1200
Southfield, MI 48076
www.signatureassociates.com

19371 Van Dyke Avenue – Detroit, Michigan

Retail/Land For Sale

720
Square Feet /
.50 Acre
AVAILABLE

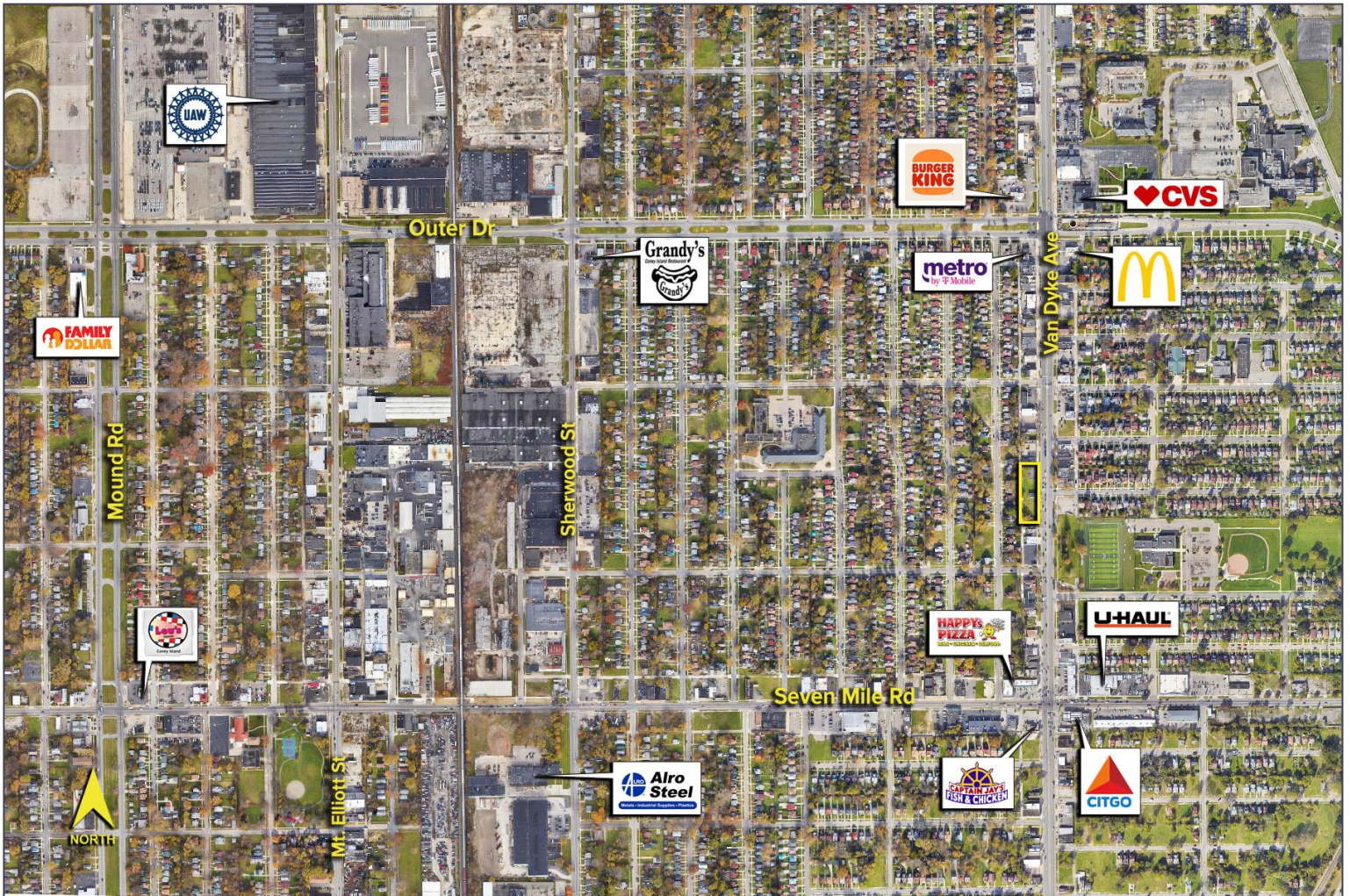


DEMOGRAPHICS

	POPULATION	MED. HH INCOME
1 MILE	12,516	\$33,945
3 MILE	122,204	\$41,722
5 MILE	350,387	\$47,350

TRAFFIC COUNTS (TWO-WAY)

21,940	Van Dyke Ave. N. of 7 Mile Rd.
16,143	Van Dyke Ave. S. of 7 Mile Rd.
15,567	7 Mile Rd. E. of Van Dyke Ave.
11,810	7 Mile Rd. W. of Van Dyke Ave.



For more information, please contact:

JOE STACK
(248) 359 0615
jstack@signatureassociates.com

PAUL SAAD
(248) 359 0652
psaad@signatureassociates.com

SIGNATURE ASSOCIATES
One Towne Square, Suite 1200
Southfield, MI 48076
www.signatureassociates.com