



# FOR LEASE

## OFFICE SPACE

### PROPERTY OVERVIEW:

Lease this exceptional office space in the heart of Trolley Square! With 5,311 sqft of space, 14 private parking spots, and multiple private offices, this property is perfect for a business looking to establish a strong presence in the area. The space features a conference room, board room, reception and waiting area, 2 ADA-compliant bathrooms, and a kitchenette. Its proximity to I-95 and I-495 makes it easily accessible for employees and clients alike.

### PRIME LOCATION IN THE HEART OF TROLLEY SQUARE

 **1700 W 14TH ST  
WILMINGTON, DE 19806**

### KEY FEATURES:

- 5,311 sqft office space
- 14 private parking spots on site
- Reception and waiting area
- Multiple private offices
- Conference room
- Board room
- Kitchenette
- 2 ADA-compliant bathrooms
- Additional Private Gated parking available
- Close proximity to I-95 and I-495

---

**\$22 SQFT NN**

**Josh Patel**

 **302-689-3811**

 **PurpleGoatManagement@Gmail.com**



# FOR LEASE

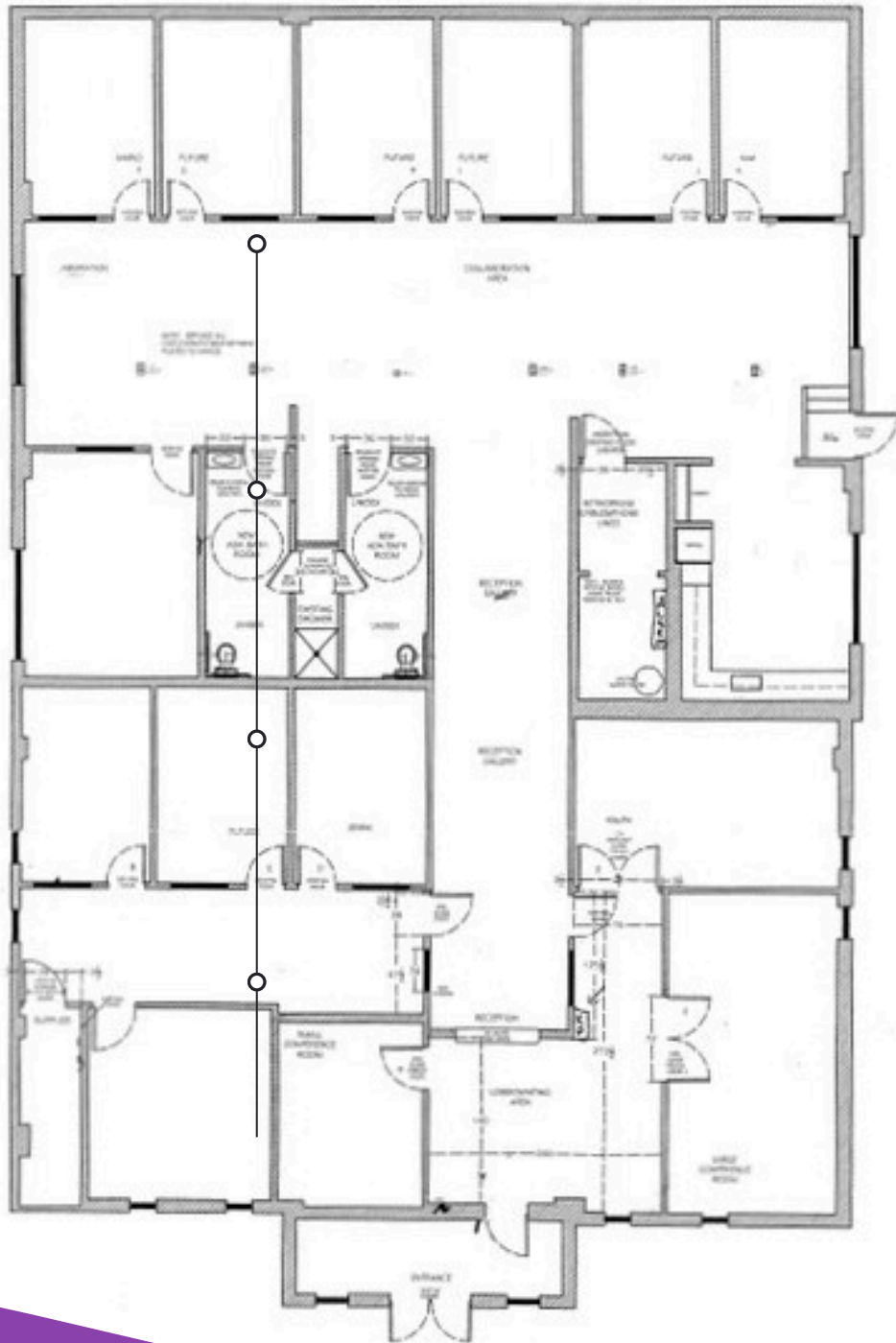
## OFFICE SPACE





# FOR LEASE

## OFFICE SPACE





# FOR LEASE

## OFFICE SPACE



