

• OUTPARCELS AT •
TOWN CENTER



ASHCO CENTERS



NEIGHBORS

TIFFANY & CO.	COACH NEW YORK	BELAMO LUXURY OUTDOOR FURNITURE	J.CREW	Dillard's	ANTHROPOLOGIE	NORDSTROM
CHANEL	GUCCI	TORY BURCH	BOSS HUGO BOSS	LOUIS VUITTON	RH RESTORATION HARDWARE	Apple
Tommy Bahama	VISUAL COMFORT & Co. Est. 1987	ARHAUS your home	lululemon	MAGGIANO'S LITTLE ITALY	MAYORS	THE CAPITAL GRILLE

☎ 904.242.9000

✉ INFO@ASHCO-INC.COM

🌐 WWW.ASHCO-INC.COM

DISCLAIMER: Information and or imagery included is not warranted to be current or correct. Readers should independently verify the information included and conduct an appropriate level of due diligence prior to entering into any transaction or agreement. This is for illustration purposes only and final product is subject to change.



DISCOVER YOUR NEXT LUXURY DESTINATION

AT THE ST. JOHNS TOWN CENTER IN JACKSONVILLE, FL

TOWN CENTER STATISTICS & INFORMATION

Discover Town Center Outparcels, Shadow Anchored by Simon Malls St Johns Town Center, the ultimate shopping and dining destination with in North Florida 175+ retailers and 20+ nationally recognized restaurants. Located in the heart of Jacksonville's thriving Retail & Dining district, the Town Center stands as the largest open air Super Regional Mall between Orlando and Atlanta. Strategically positioned at the junction of 295 and J Turner Butler Boulevard, it offers a premier experience alongside prestigious brands like Gucci, Chanel, Restoration Hardware, Apple, Nordstrom, Dillards, and many more.

- Over **20 million** visitors annually.
- Average sales **~\$1,750** per square foot, significantly higher than the national average for malls.
- Average household income in the surrounding area exceeding **\$100,000**.
- Over **175** stores, including high-end retailers like Nordstrom, Louis Vuitton, and Tiffany & Co.
- Jacksonville's metropolitan area population is over **1.5 million** and continues to grow.



#1 most populous city in Florida and #10 most populous in the USA according to the US Census.

ICONIC LOCATION

Largest Super Regional Mall Between Orlando & Atlanta. Strategically located at the signalized first entrance to Town Center. Outparcel to Nordstrom featuring opportunity for signage on Big Island Drive and Buckhead Branch Drive.

DENSE RESIDENTIAL POPULATION

- Surrounded by dense daytime population of **263,211** and **23.5M SF** of office within five miles.
- **8,700+** multifamily units exist along the Gate Pkwy corridor with another **1,300+** proposed.
- In close proximity to the future **550-acre** "Seven Pines" residential development by David Weekly and ICI Homes, with **1,600** single-family homes planned.
- Close proximity to UNF with **16,500+** students.



904.242.9000

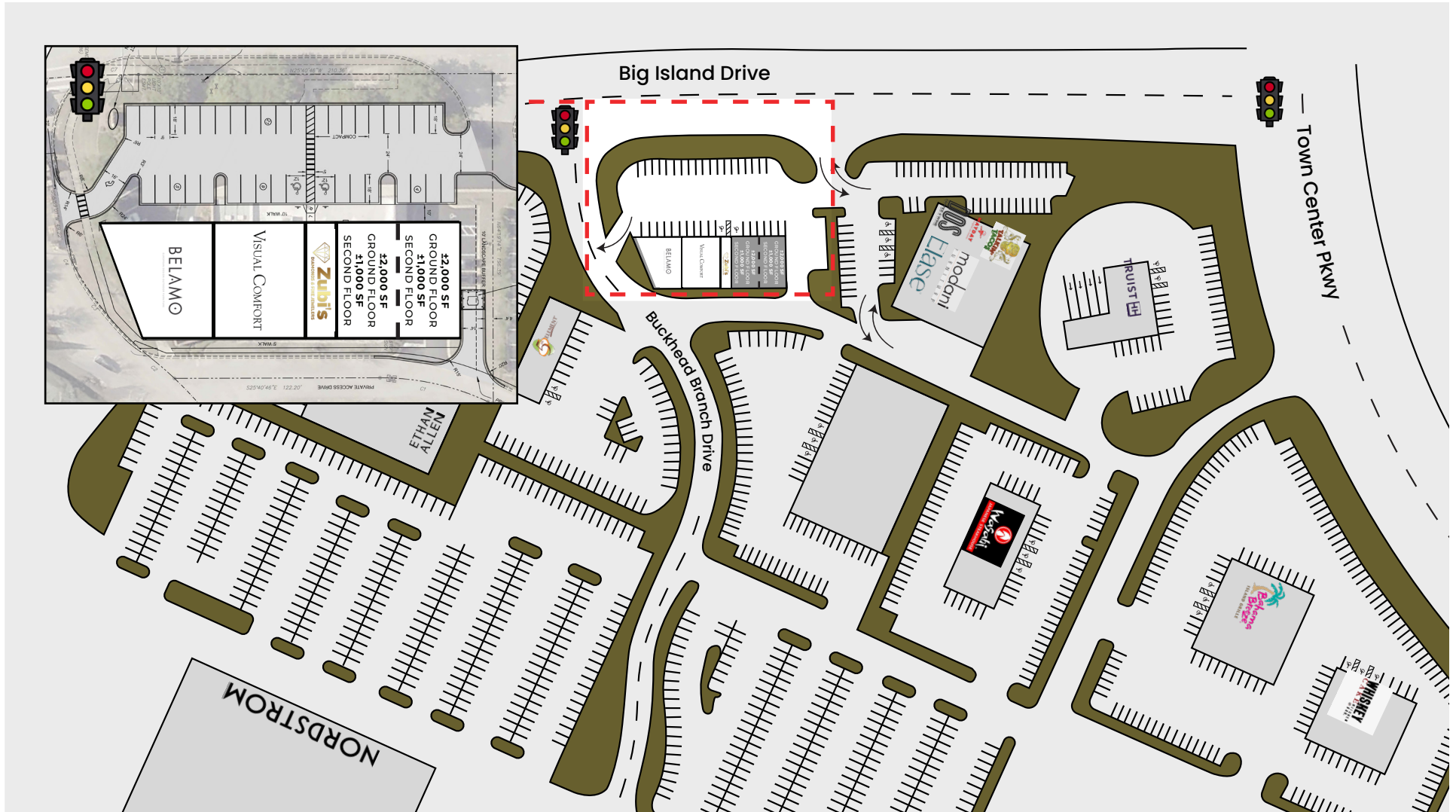


INFO@ASHCO-INC.COM



WWW.ASHCO-INC.COM

• OUTPARCELS AT •
TOWN CENTER



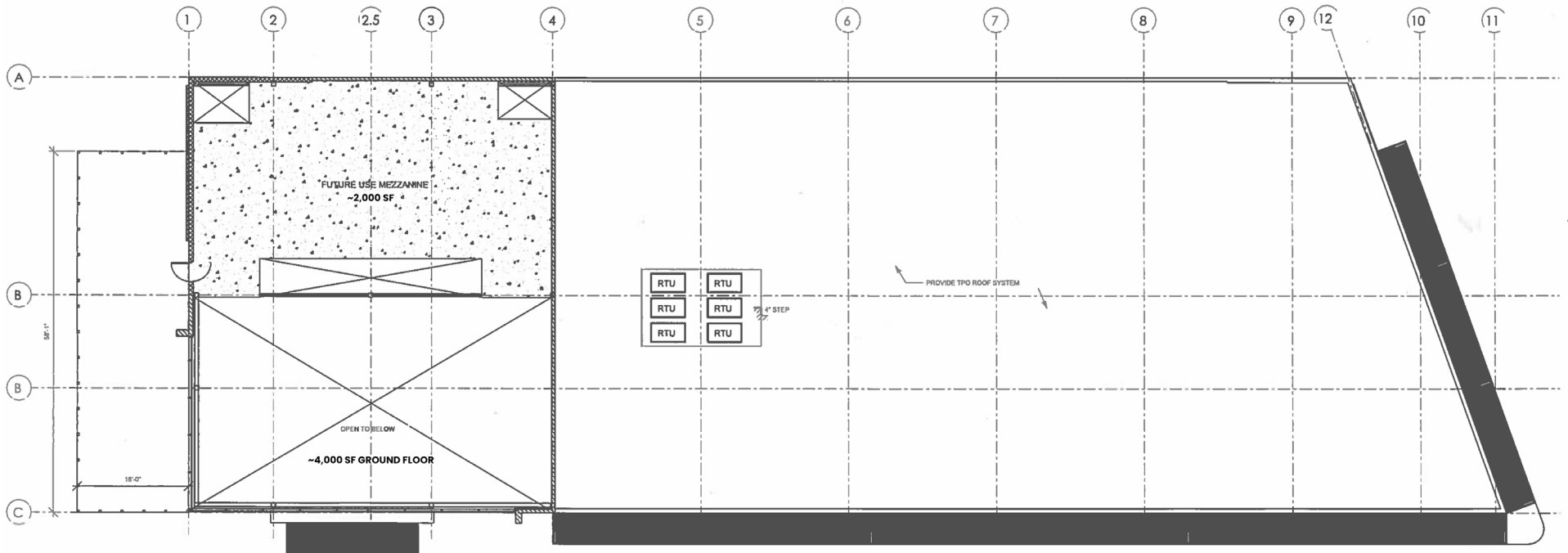
📞 904.242.9000

✉️ INFO@ASHCO-INC.COM

🌐 WWW.ASHCO-INC.COM

DISCLAIMER: Information and or imagery included is not warranted to be current or correct. Readers should independently verify the information included and conduct an appropriate level of due diligence prior to entering into any transaction or agreement. This is for illustration purposes only and final product is subject to change.

• OUTPARCELS AT •
TOWN CENTER



904.242.9000



INFO@ASHCO-INC.COM



WWW.ASHCO-INC.COM

DISCLAIMER: Information and or imagery included is not warranted to be current or correct. Readers should independently verify the information included and conduct an appropriate level of due diligence prior to entering into any transaction or agreement. This is for illustration purposes only and final product is subject to change.

• OUTPARCELS AT • TOWN CENTER



ASHCO CENTERS



904.242.9000



INFO@ASHCO-INC.COM



WWW.ASHCO-INC.COM

DISCLAIMER: Information and or imagery included is not warranted to be current or correct. Readers should independently verify the information included and conduct an appropriate level of due diligence prior to entering into any transaction or agreement. This is for illustration purposes only and final product is subject to change.

• OUTPARCELS AT •
TOWN CENTER




2023 ESTIMATED DEMOGRAPHICS

5 Mile Radius

Ashco is proud to present our shopping center located in St. Johns Town Center. Join North Florida's top "Live, Work, Play" destination, Town Center Retail Plaza.

LOCATION	POPULATION	MEDIAN AGE	AVG HH INCOME	TRAFFIC VOLUME
JACKSONVILLE 4907 Big Island Drive. Jacksonville, FL 32246	188,785	38.4	\$86,202	121,631

 **904.242.9000**

 **INFO@ASHCO-INC.COM**

 **WWW.ASHCO-INC.COM**

DISCLAIMER: Information and or imagery included is not warranted to be current or correct. Readers should independently verify the information included and conduct an appropriate level of due diligence prior to entering into any transaction or agreement. This is for illustration purposes only and final product is subject to change.

• OUTPARCELS AT •
TOWN CENTER



ASHCO CENTERS


About Ashco

ASHCO is a leading real estate management and development company with a passion for enhancing the value and performance of its strategically located commercial retail properties. We have served the Jacksonville, Florida community for over five decades where we have built a reputation for excellence. Our commitment to the success of our tenants is evidenced by our responsiveness, accessibility, and the personal relationships we build with our tenants.



Ashco board is proud to support the following organizations



 **904.242.9000**

 **INFO@ASHCO-INC.COM**

 **WWW.ASHCO-INC.COM**

DISCLAIMER: Information and or imagery included is not warranted to be current or correct. Readers should independently verify the information included and conduct an appropriate level of due diligence prior to entering into any transaction or agreement. This is for illustration purposes only and final product is subject to change.