

AVISON YOUNG

For Lease

201 Wilton Ave, Middlesex, NJ



±18,500 sf

Class A IOS/ISF on 3.1 acres

Available Q4 2025

[Website](#)

For more information

Timothy J. Cadigan

Principal

D +1 973 753 1104 | C +1 732 320 5210

timothy.cadigan@avisonyoung.com

Stephen Gianis

Vice President

D +1 973 753 1076 | C +1 908 447 6022

stephen.gianis@avisonyoung.com

Matthew C. Turse, CCIM

Principal

D +1 973 898 6370 | C +1 973 670 3247

matthew.turse@avisonyoung.com

John Gianis

Vice President

D +1 973 753 1064 | C +1 908 868 0104

john.gianis@avisonyoung.com





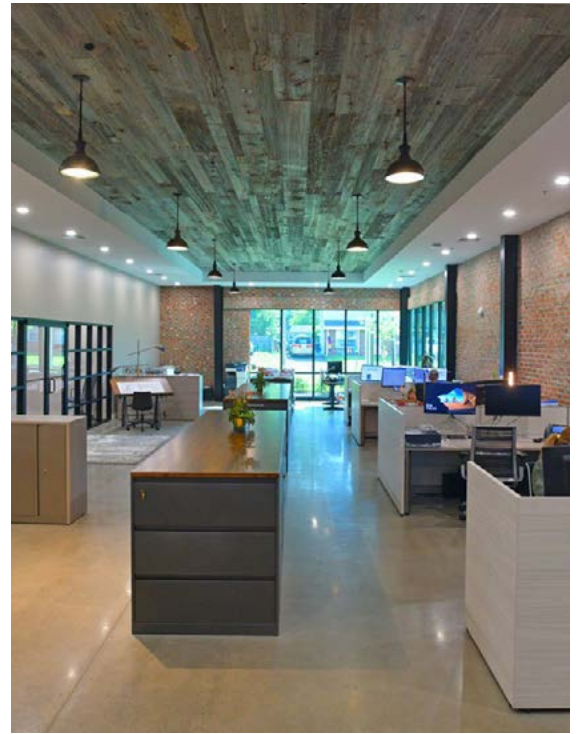
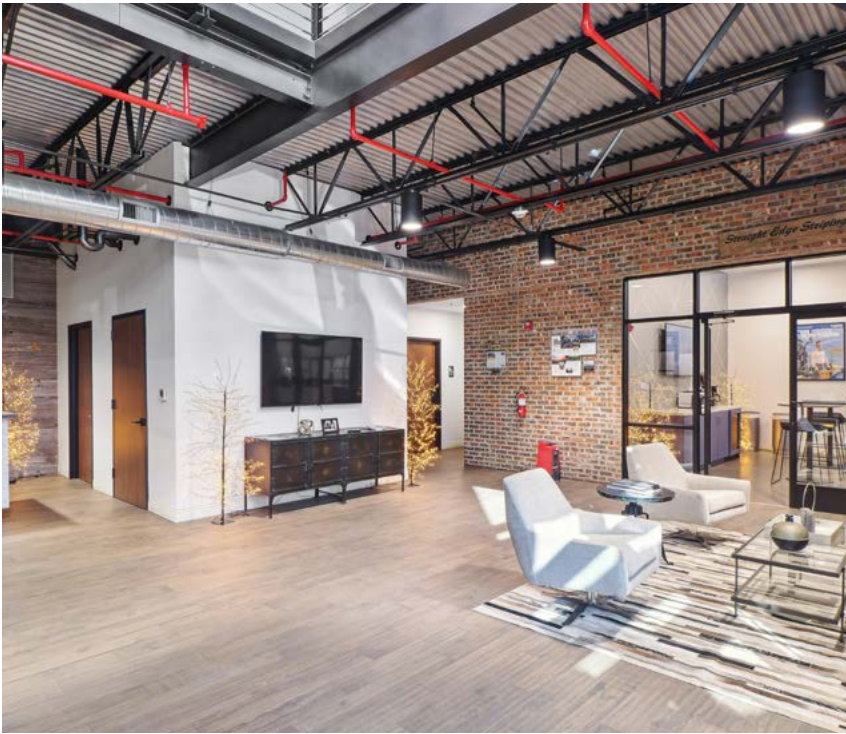
Property overview

| | |
|-----------------------|---|
| Building size | ± 18,500 sf |
| Total office | ± 9,370 sf First floor: ± 7,531 sf Second floor: ± 1,838 sf |
| Area | ± 3.1 acres |
| Clear height | ± 28' |
| Loading | 7 drive in doors (12' x 14') |
| Parking | 70 car spaces |
| Column spacing | Clear span |
| Year built | 2019 |
| Electrical | 600 Amp 208v |
| Sprinklers | ESFR |
| Taxes (2024) | \$76,371 |
| Zoning | Industrial |

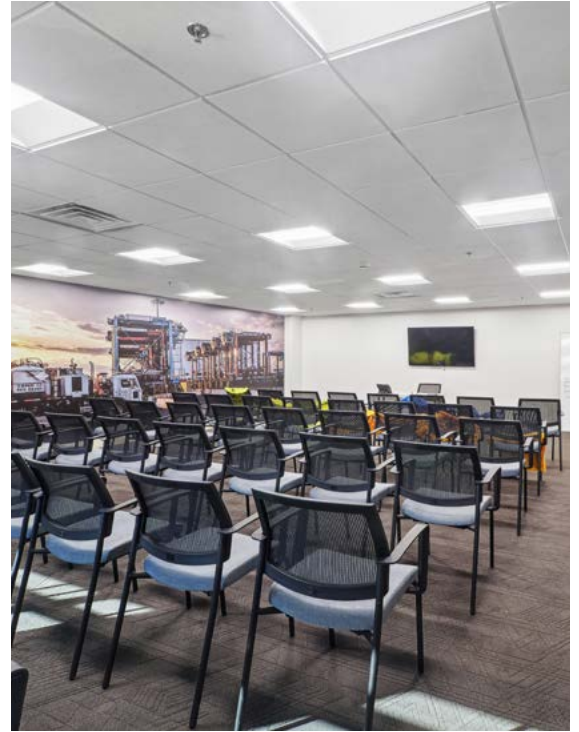
Additional features

- Class A Industrial Outdoor Storage building
- 3.1 acre yard area: paved, lit, fenced, and secured
- Easy access to I-287, Routes 18 & 22, US Highway 1 and NJ Turnpike (Exit 10)
- All grade level loading - 7 doors (12'x14')
- Covered outdoor storage area
- Available Q4 2025

Gallery



Gallery

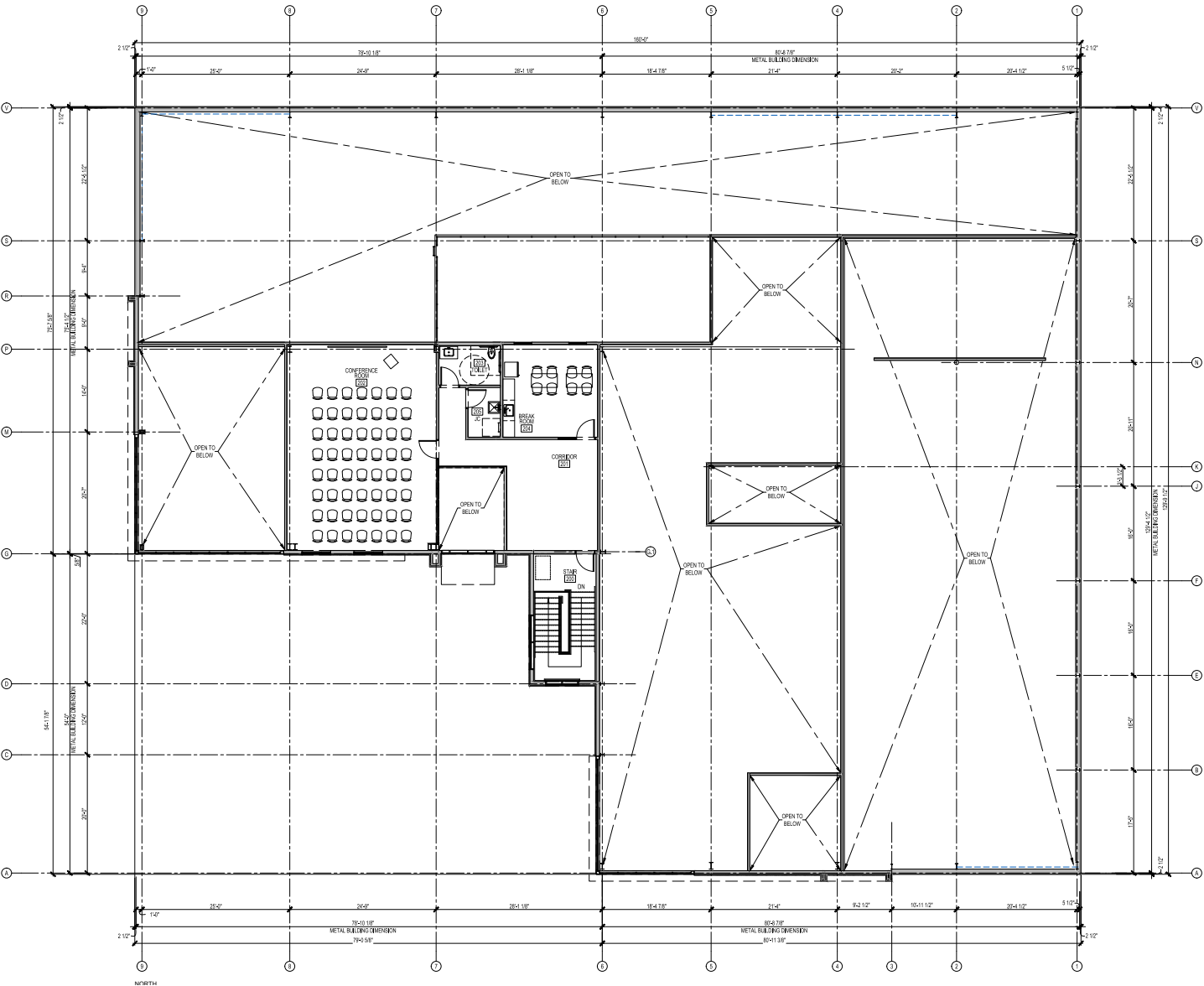


Gallery



[illegible]

Floor plan
Second floor



Location maps

