

FOR LEASE

750 Ellsworth Road

Rome, New York 13441



Storage Building For Lease



## 4,960± SF Storage Building

### Property Highlights

- Great location in the Griffiss Business Technology Park
- 3.55± acres of land can be used for outdoor storage
- 1 Ground level door at 12' wide x 11' high
- Additional 4,600± autobody building on adjacent site also available for lease. This building has 4 acres of mostly paved parking as well

Demographic	1 Mile	3 Miles	5 Miles
Population	949	20,551	35,510
Households	412	9,309	14,970
Average H.H. Income	\$49,879	\$69,367	\$74,662
Daytime Employees	4,105	13,180	20,096

Source: ESRI Business Analyst 2023

### Contact

**JEFFREY D'AMORE, SIOR**  
Real Estate Broker, Executive Director  
+1 315 725 3510  
jdamore@pyramidbrokerage.com

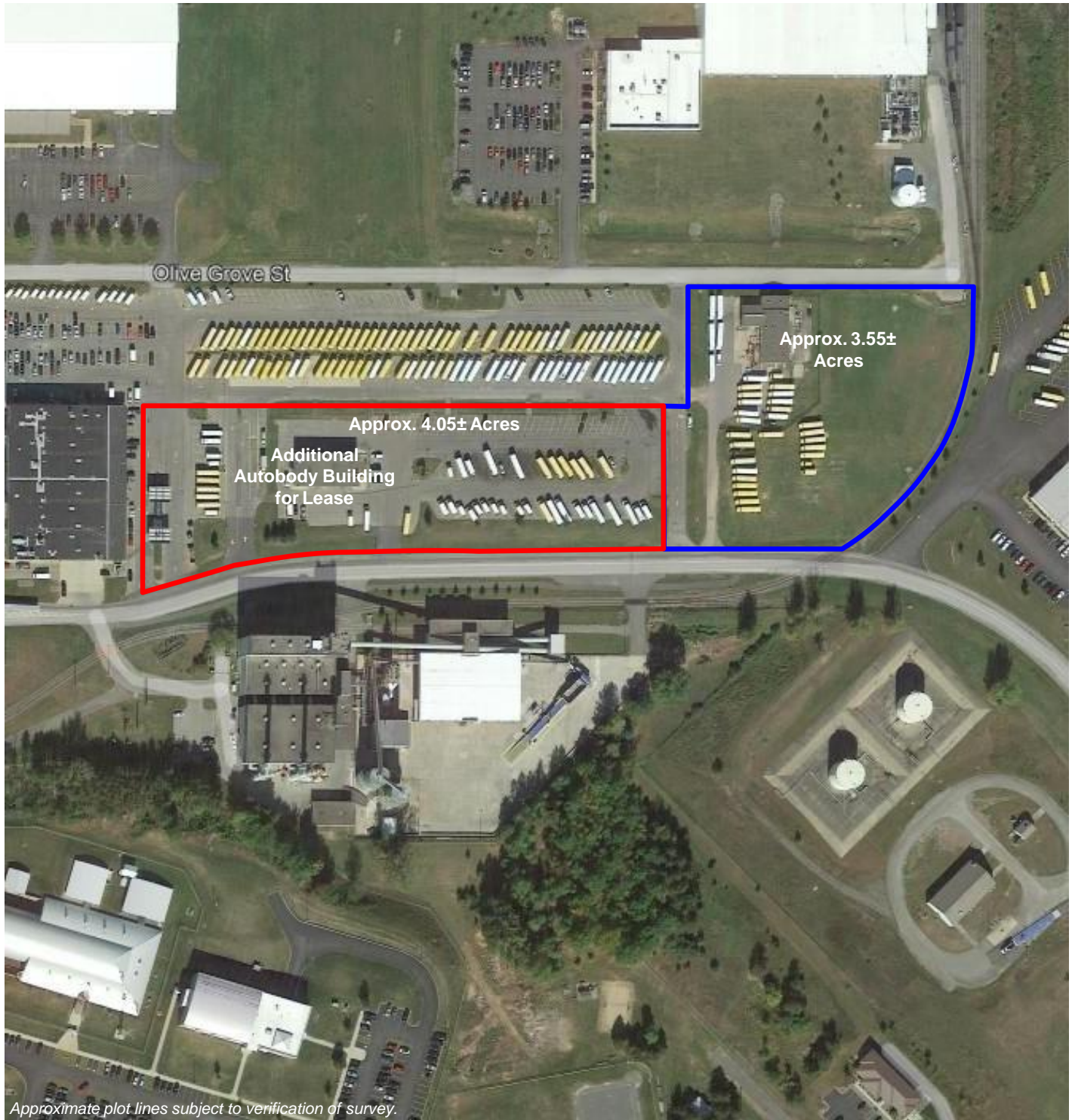
**JAMES DYLAN FURNEY**  
Associate Real Estate Broker  
+1 315 225 8571  
jfurney@pyramidbrokerage.com

5845 Widewaters Pkwy, Suite 200  
East Syracuse, New York 13057  
+1 315 445 1030  
pyramidbrokerage.com



**FOR LEASE**

**750 Ellsworth Road | Rome, New York**



Approximate plot lines subject to verification of survey.



FOR LEASE

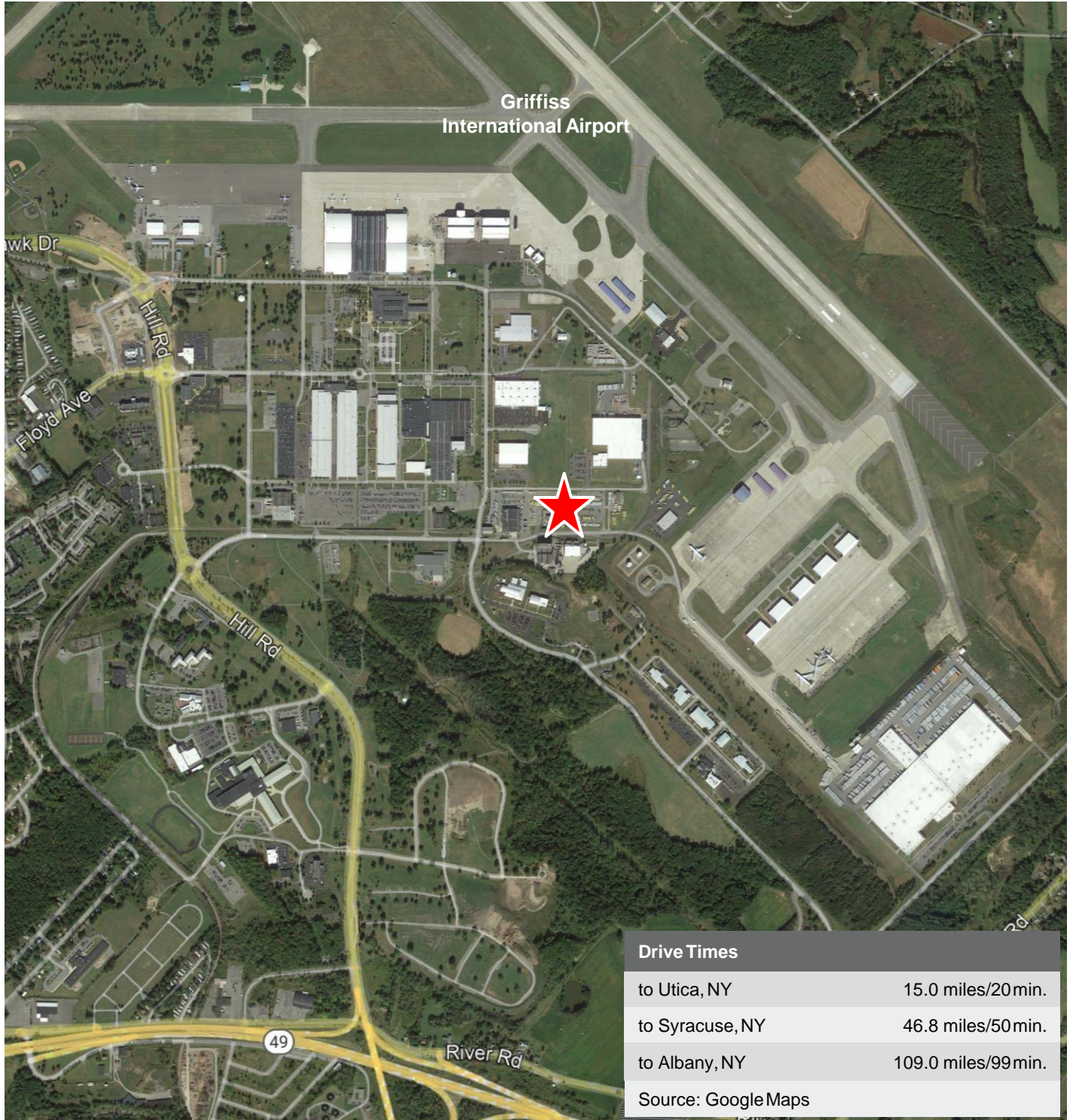
750 Ellsworth Road | Rome, New York





**FOR LEASE**

**750 Ellsworth Road | Rome, New York**



Drive Times	
to Utica, NY	15.0 miles/20 min.
to Syracuse, NY	46.8 miles/50 min.
to Albany, NY	109.0 miles/99 min.
Source: Google Maps	