

PARK SLOPE, BROOKLYN NY

**561 4TH AVENUE**

MOD





# SPACE DETAILS

## LOCATION

Corner of 4th Avenue and 16th Street

## SPACE

Ground Floor: 800 SF

## FRONTAGE

50 Feet Wraparound Frontage

## CEILING HEIGHT

10 Feet

## POSSESSION

Immediate

## ASKING RENT

Upon Request

## NEIGHBORS

No filter coffee, Black Horse Pub, Harbor Fitness, Studio 16 Personal Training, Pure Green - Juice Bar Park Slope, Luo's Burgers, Edible Arrangements, The Common Park Slope, Gopuff, Alma Negra, Olivier Bistro, Starbucks', Bread & Joe

## TRANSPORTATION



## COMMENTS

- Park Slope Corner space with exposure on 4th Ave & 16th St
- Boutique new construction building
- Previously studio 16 personal training gym
- Prestine condition move-in ready
- Central heat/AC
- Heavy Foot Traffic
- All Uses Considered

# CONTACTS

## MEYER DAGMY

718-249-3613

m@modcre.com

## EDDIE MAMIYE

917-379-6719

e@modcre.com

## MIKE SUTTON

917-588-1000

mike@modcre.com



2774 CONEY ISLAND AVE, BROOKLYN, NY 11235

# EXTERIOR IMAGE



## CONTACTS

### **MEYER DAGMY**

718-249-3613

m@modcre.com

### **EDDIE MAMIYE**

917-379-6719

e@modcre.com

### **MIKE SUTTON**

917-588-1000

mike@modcre.com

2774 CONEY ISLAND AVE, BROOKLYN, NY 11235





# INTERIOR IMAGES



## CONTACTS

### MEYER DAGMY

718-249-3613

m@modcre.com

### EDDIE MAMIYE

917-379-6719

e@modcre.com

### MIKE SUTTON

917-588-1000

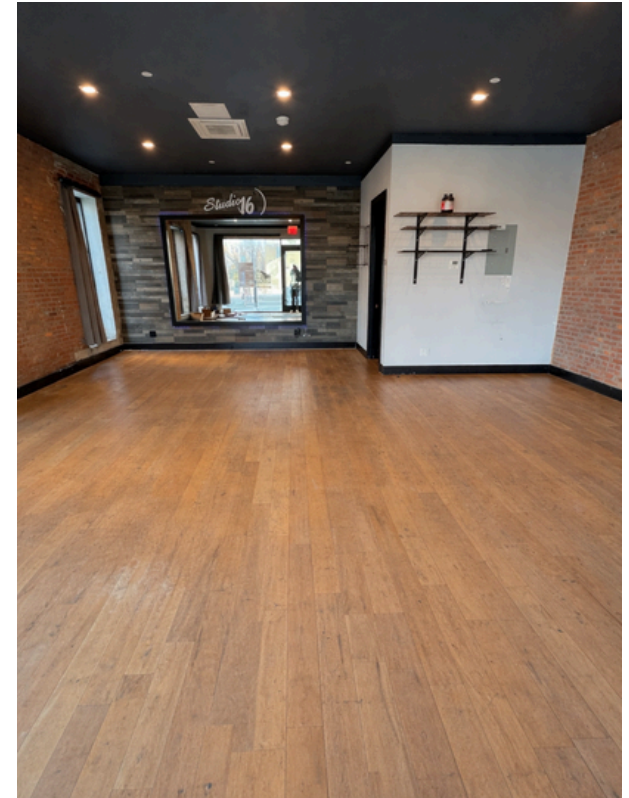
mike@modcre.com

2774 CONEY ISLAND AVE, BROOKLYN, NY 11235





# INTERIOR IMAGES



## CONTACTS

### MEYER DAGMY

718-249-3613

m@modcre.com

### EDDIE MAMIYE

917-379-6719

e@modcre.com

### MIKE SUTTON

917-588-1000

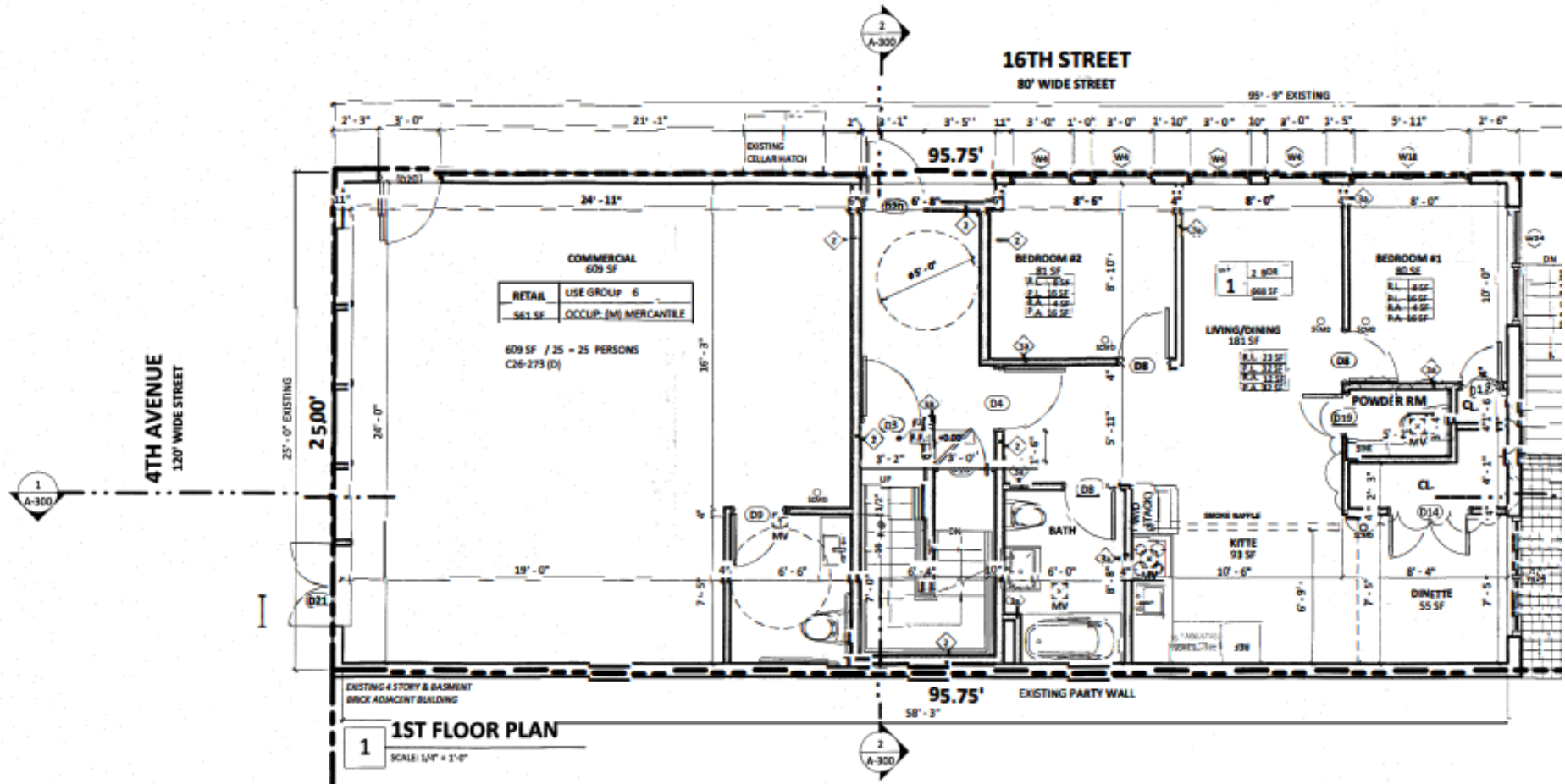
mike@modcre.com

2774 CONEY ISLAND AVE, BROOKLYN, NY 11235





# FLOOR PLAN



## CONTACTS

### MEYER DAGMY

718-249-3613  
m@modcre.com

### EDDIE MAMIYE

917-379-6719  
e@modcre.com

### MIKE SUTTON

917-588-1000  
mike@modcre.com

MOD



# AREA MAP



## CONTACTS

### MEYER DAGMY

718-249-3613

m@modcre.com

### EDDIE MAMIYE

917-379-6719

e@modcre.com

### MIKE SUTTON

917-588-1000

mike@modcre.com



2774 CONEY ISLAND AVE, BROOKLYN, NY 11235

© 2025 MOD Commercial Realty LLC. All information provided is deemed reliable, but is not guaranteed and should be independently verified.