



Keegan & Coppin
COMPANY, INC.

FOR LEASE

**1450 AIRPORT BLVD., STE 100
SANTA ROSA, CA**

Airport Area Office Space



Go beyond broker.

PRESENTED BY:

SHAWN JOHNSON, MANAGING PARTNER/SIOR
LIC # 00835502 (707) 528-1400 EXT. 238
sjohnson@keegancoppin.com



Keegan & Coppin
COMPANY, INC.



1450 AIRPORT BOULEVARD
SUITE 100
SANTA ROSA, CA

**Airport Area Office
Space for Lease**

PROPERTY SUMMARY

FEATURES

Suite 100

- 5 Private Offices
- 2 File Storage Rooms
- Private Restroom

SUITE SIZE

Suite 100: 1,615+/- sq ft.

Spaces can be combined

LEASE RATE

\$1.55 GROSS

+ UTILITIES & INSIDE JANITORIAL

LEASE TERM

- 3-5 year lease term preferred
- Available Immediately

DESCRIPTION OF PREMISES

This modern two-story building provides a professional and spacious atmosphere with high quality design, improvements, and natural light. Plenty of parking is available. The suite has private restroom(s), with multiple private offices, file storage rooms, conference room, open space, direct access to the parking lot and fire sprinkler system. Signage is also available.

LOCATION OVERVIEW

This property is located in the Prestigious Charles Schulz Sonoma County Regional Airport area of Santa Rosa comprised of attractive, high quality, buildings with extensive landscaping and glass lines. Near Windsor Golf Course and the Airport Health & Fitness Club.

excellent for professional office uses. With ample onsite parking, Zoning is MP Industrial Park. Leases are Modified Full Service excluding interior janitorial and utilities



PRESENTED BY:

SHAWN JOHNSON, MANAGING PARTNER/SIOR
KEEGAN & COPPIN CO., INC.
LIC # 00835502 (707) 528-1400 EXT. 238
SJOHNSON@KEEGANCOPPIN.COM

Keegan & Coppin Company, Inc.

The above information, while not guaranteed, has been secured from sources we believe to be reliable. Submitted subject to error, change or withdrawal. An interested party should verify the status of the property and the information herein.



Keegan & Coppin
COMPANY, INC.



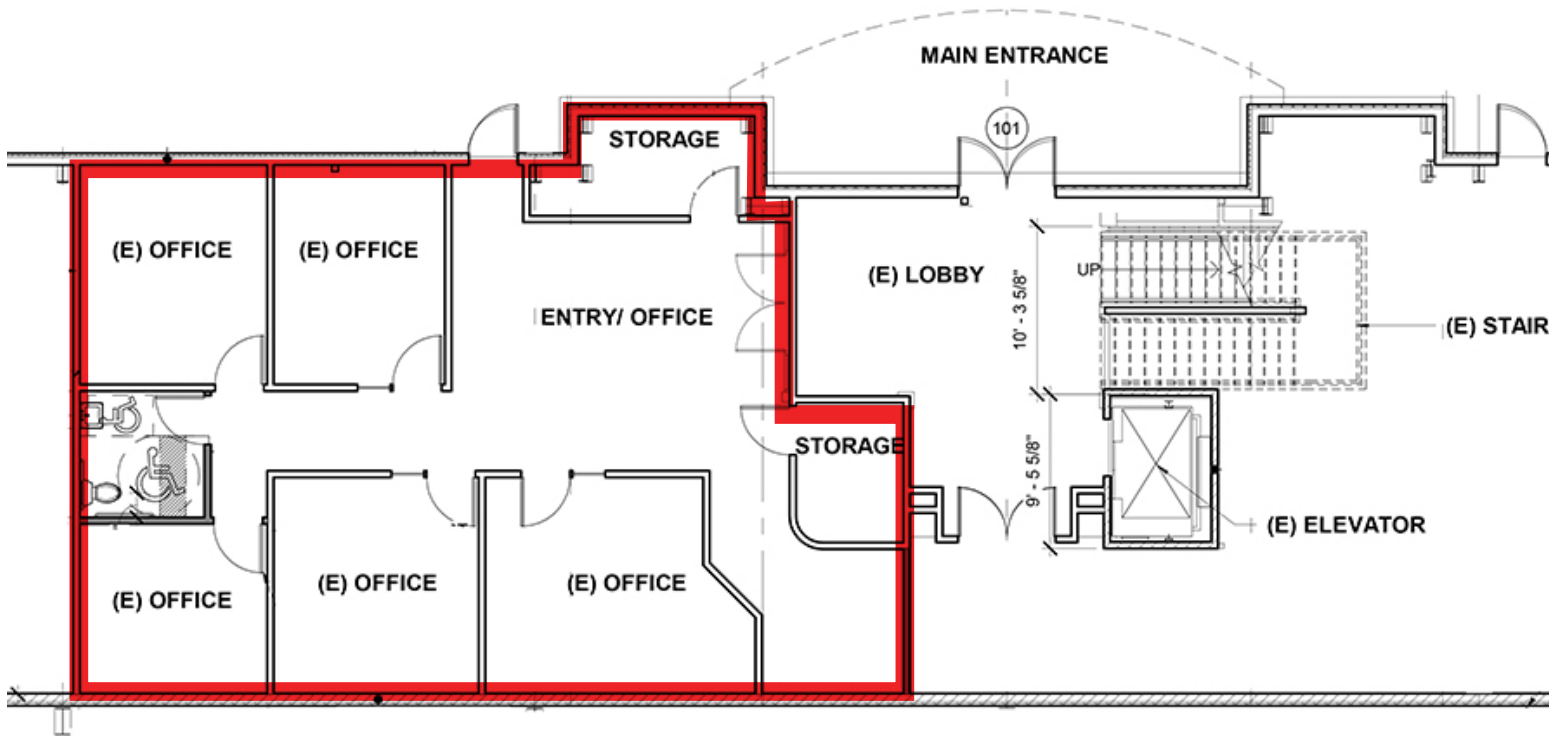
1450 AIRPORT BOULEVARD
SUITE 100
SANTA ROSA, CA

**Airport Area Office
Space for Lease**

FLOOR PLAN

SUITE 100

1,615+/- SQ. FT.



PRESENTED BY:

SHAWN JOHNSON, MANAGING PARTNER/SIOR
KEEGAN & COPPIN CO., INC.
LIC # 00835502 (707) 528-1400 EXT. 238
SJOHNSON@KEEGANCOPPIN.COM

Keegan & Coppin Company, Inc.

The above information, while not guaranteed, has been secured from sources we believe to be reliable. Submitted subject to error, change or withdrawal. An interested party should verify the status of the property and the information herein.



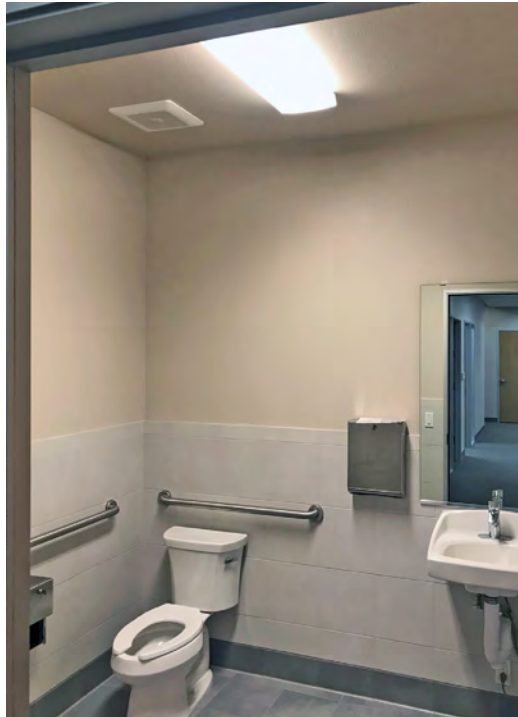
Keegan & Coppin
 COMPANY, INC.



1450 AIRPORT BOULEVARD
 SUITE 100
 SANTA ROSA, CA

**Airport Area Office
 Space for Lease**

**PROPERTY PHOTOS
 SUITE 100**



PRESENTED BY:

SHAWN JOHNSON, MANAGING PARTNER/SIOR
KEEGAN & COPPIN CO., INC.
 LIC # 00835502 (707) 528-1400 EXT. 238
 SJOHNSON@KEEGANCOPPIN.COM

Keegan & Coppin Company, Inc.
 The above information, while not guaranteed, has been secured from sources we believe to be reliable. Submitted subject to error, change or withdrawal. An interested party should verify the status of the property and the information herein.



Keegan & Coppin
COMPANY, INC.



1450 AIRPORT BOULEVARD
SUITE 100
SANTA ROSA, CA

**Airport Area Office
Space for Lease**

AERIAL MAP



Keegan & Coppin Co., Inc.
1355 N Dutton Ave.
Santa Rosa, CA 95401
www.keegancoppin.com
(707) 528-1400

PRESENTED BY:

SHAWN JOHNSON, MANAGING PARTNER/SIOR
LIC # 00835502 (707) 528-1400 EXT. 238
sjohnson@keegancoppin.com

The above information, while not guaranteed, has been secured from sources we believe to be reliable. Submitted subject to error, change or withdrawal. An interested party should verify the status of the property and the information herein.