

## Capital Complex East

1024 & 1025 Capital Center Drive  
Frankfort, Kentucky 40601

### Property Highlights

- LEASE INCENTIVES AVAILABLE
- Building 1024: +/-107,695 SF three-story office building
- Building 1025: +/-74,183 SF three-story office building
- Immediate occupancy
- Located in the Capital Complex Office Park on the east side of Frankfort
- Less than a mile from the intersection of I-64 and US Highway 60
- Frankfort is located in the legendary Bluegrass Region in Central Kentucky and enjoys a broad diversity of resources supporting successful economic development efforts, which include sustainable existing business growth and expansion, new business attraction, creation of new businesses, and tourism
- Rental Rate: Contact Agent

### Spaces

### Space Size

1024-1st Fl, Suite 206 6,200 SF

1024-3rd Fl, Suite 320 22,500 SF

1024-3rd Fl, Suite 350 12,945 SF

1025-1st Fl, Suite 105 3,209 SF

1025-2nd Fl, Suite 205 350 SF

### For More Information

**Paul Ray Smith, Jr**

Executive Vice President

O: 859 422 4401

prsmith@naiisaac.com | KY #183529

**Zach Smith, CCIM**

Senior Associate

O: 859 224 2000

zachsmith@naiisaac.com

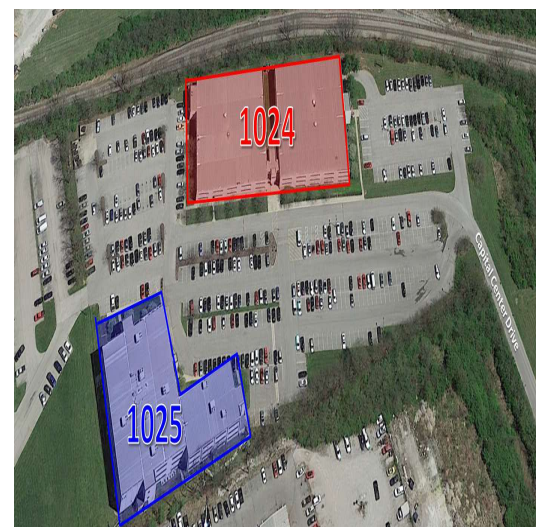




Commercial Real Estate Services, Worldwide.

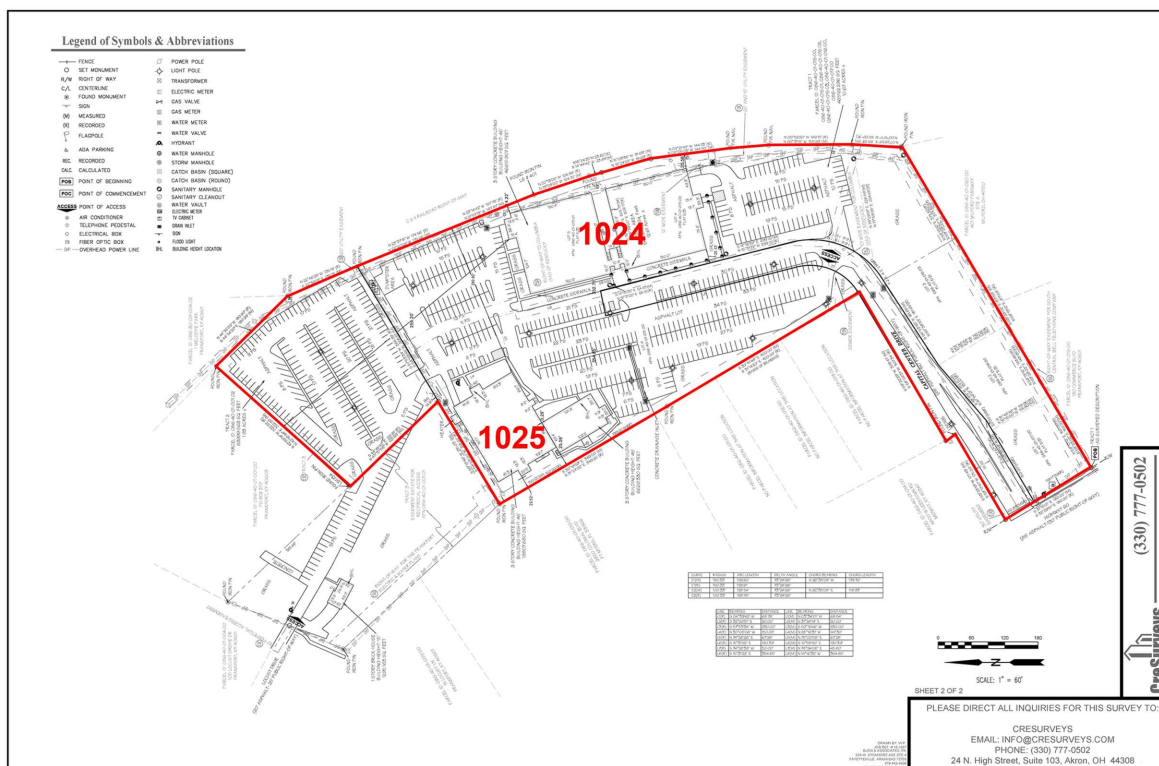
For Lease

350 - 22,500 SF | Negotiable  
Office Space



NO WARRANTY OR REPRESENTATION, EXPRESS OR IMPLIED, IS MADE AS TO THE ACCURACY OF THE INFORMATION CONTAINED HEREIN, AND THE SAME IS SUBMITTED SUBJECT TO ERRORS, OMISSIONS, CHANGE OF PRICE, RENTAL OR OTHER CONDITIONS, PRIOR SALE, LEASE OR FINANCING, OR WITHDRAWAL WITHOUT NOTICE, AND OF ANY SPECIAL LISTING CONDITIONS IMPOSED BY OUR PRINCIPALS NO WARRANTIES OR REPRESENTATIONS ARE MADE AS TO THE CONDITION OF THE PROPERTY OR ANY HAZARDS CONTAINED THEREIN ARE ANY TO BE IMPLIED.

771 Corporate Drive, Suite 500  
Lexington, KY 40503  
859 224 2000 tel  
[naiisaac.com](http://naiisaac.com)



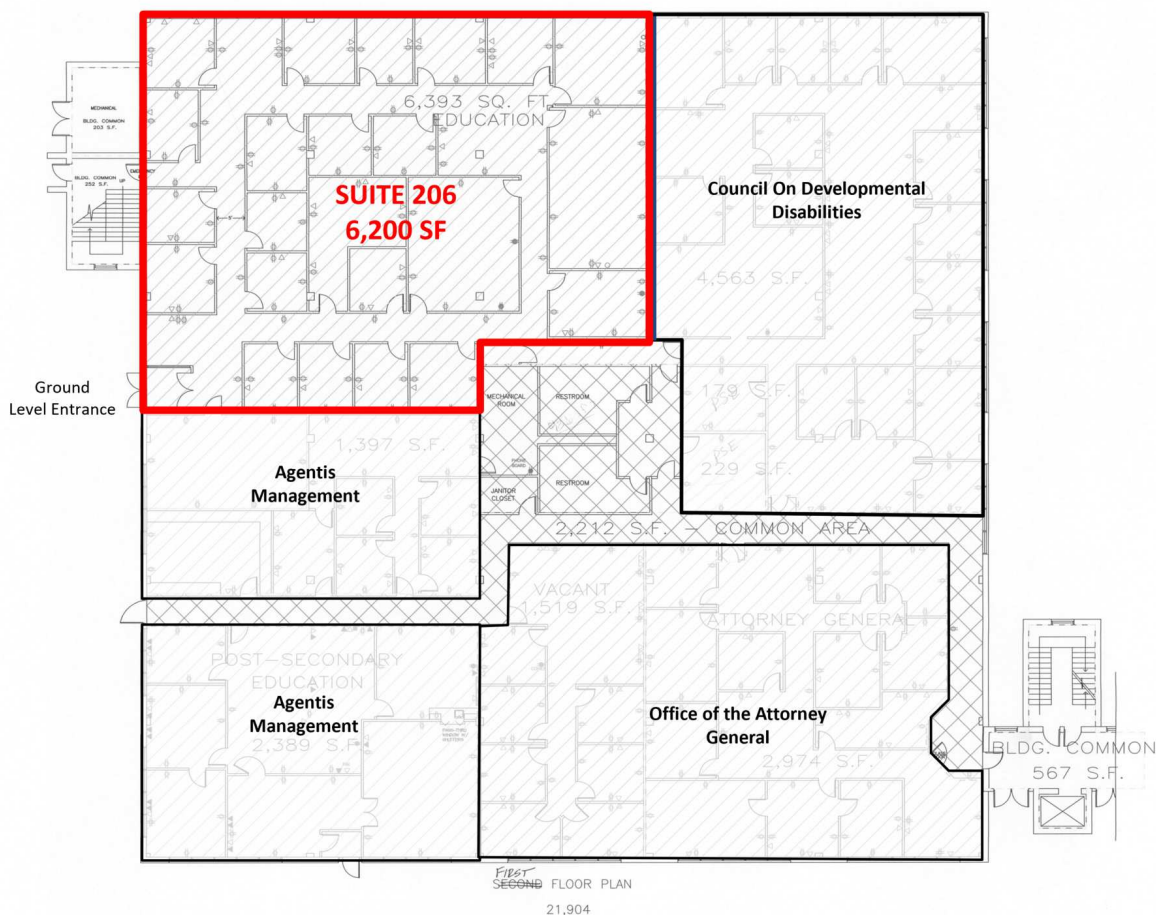
## Lease Information

<b>Lease Type:</b>	MG	<b>Lease Term:</b>	Negotiable
<b>Total Space:</b>	350 - 22,500 SF	<b>Lease Rate:</b>	Negotiable

## Available Spaces

Suite	Size (SF)	Lease Type	Description
1024-1st Fl, Suite 206	6,200 SF	Modified Gross	-
1024-3rd Fl, Suite 320	22,500 SF	Modified Gross	-
1024-3rd Fl, Suite 350	12,945 SF	Modified Gross	-
1025-1st Fl, Suite 101	3,198 SF	Modified Gross	Pending
1025-1st Fl, Suite 103b	1,200 SF	Modified Gross	Pending
1025-1st Fl, Suite 105	3,209 SF	Modified Gross	-
1025-2nd Fl, Suite 205	350 SF	Modified Gross	-
1025-2nd Fl, Suite 206	5,392 SF	Modified Gross	Pending

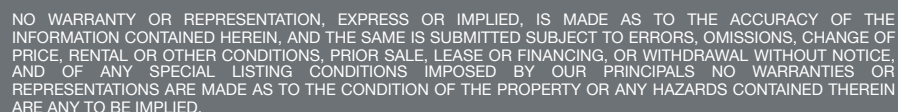


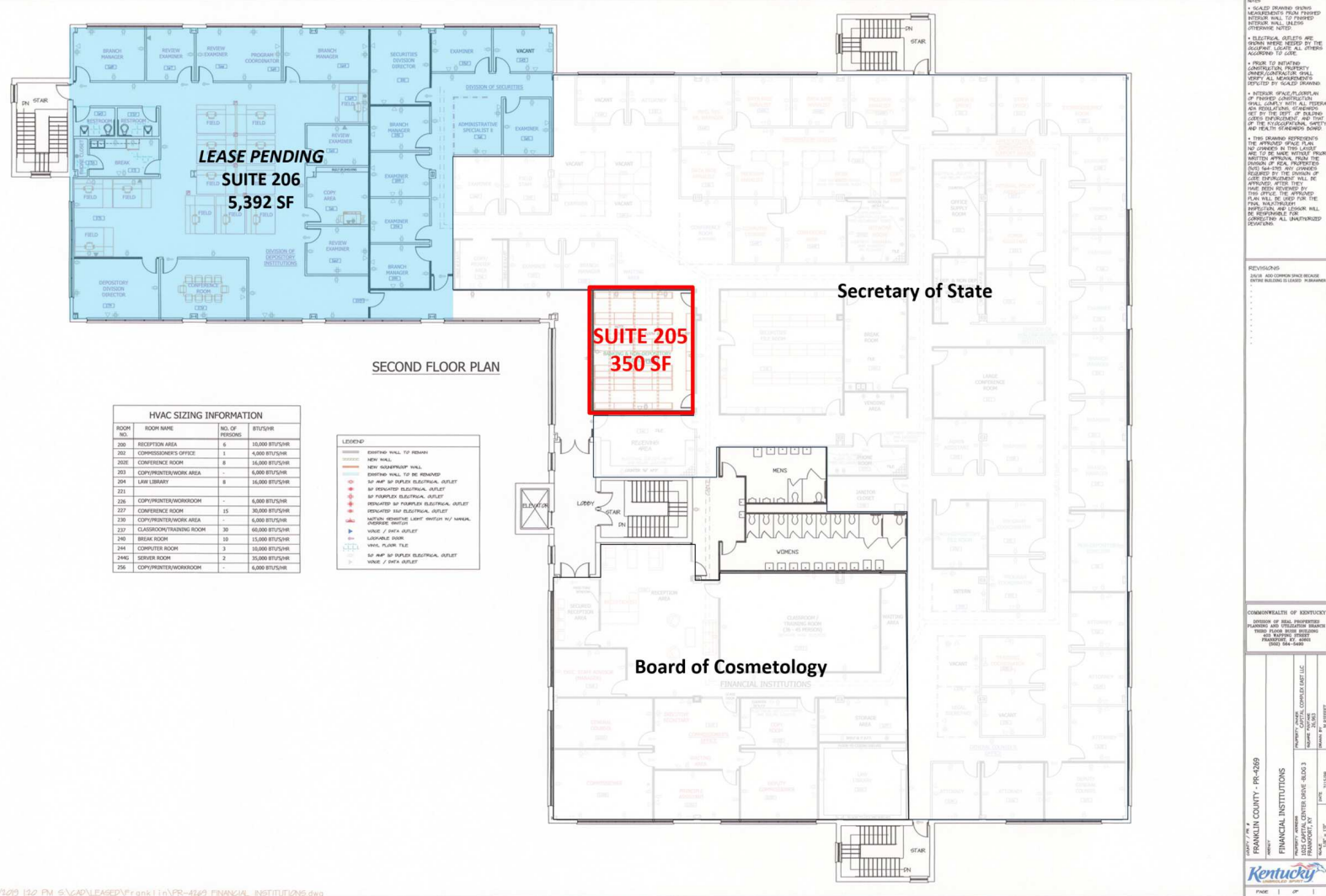
[illegible]



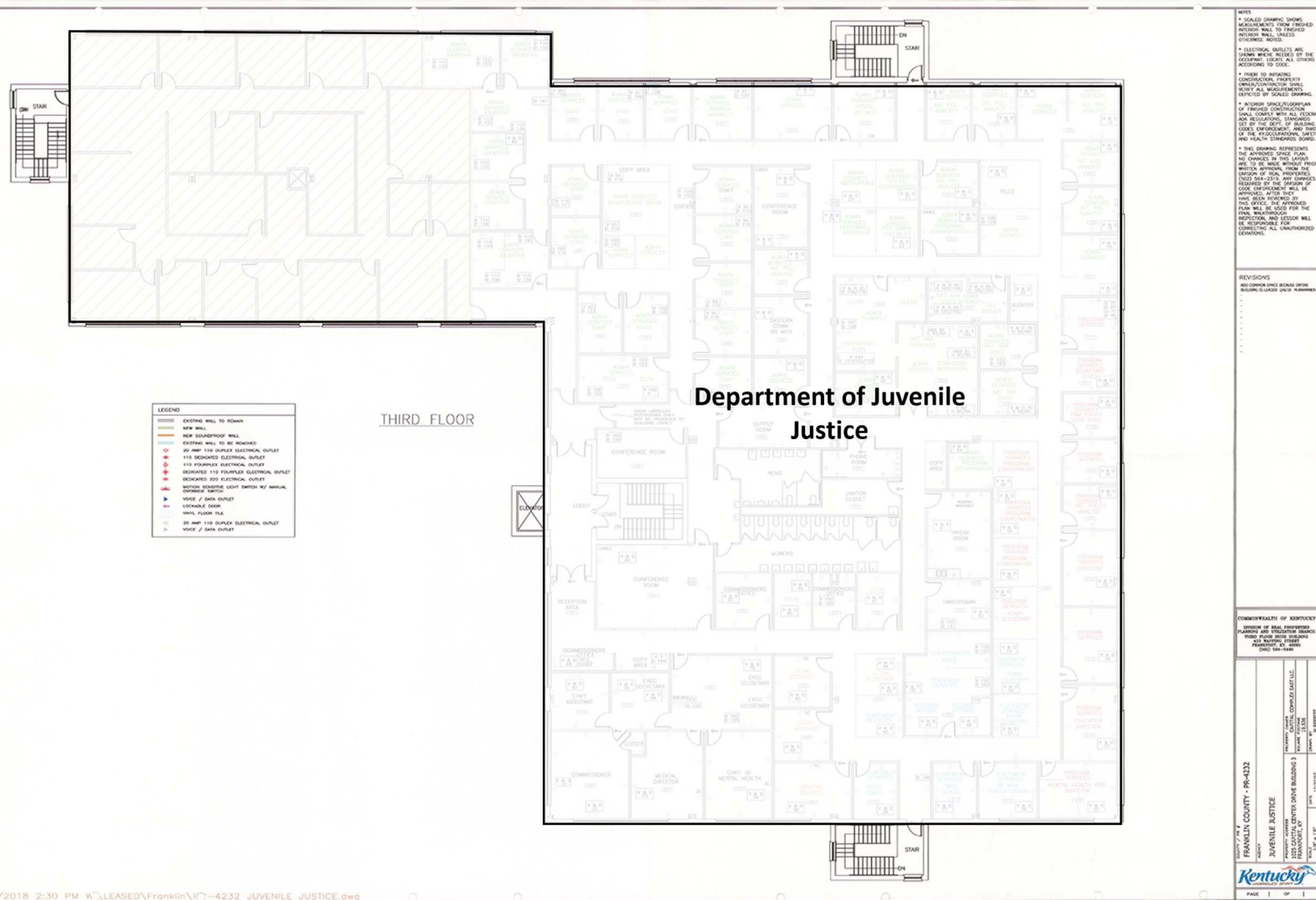




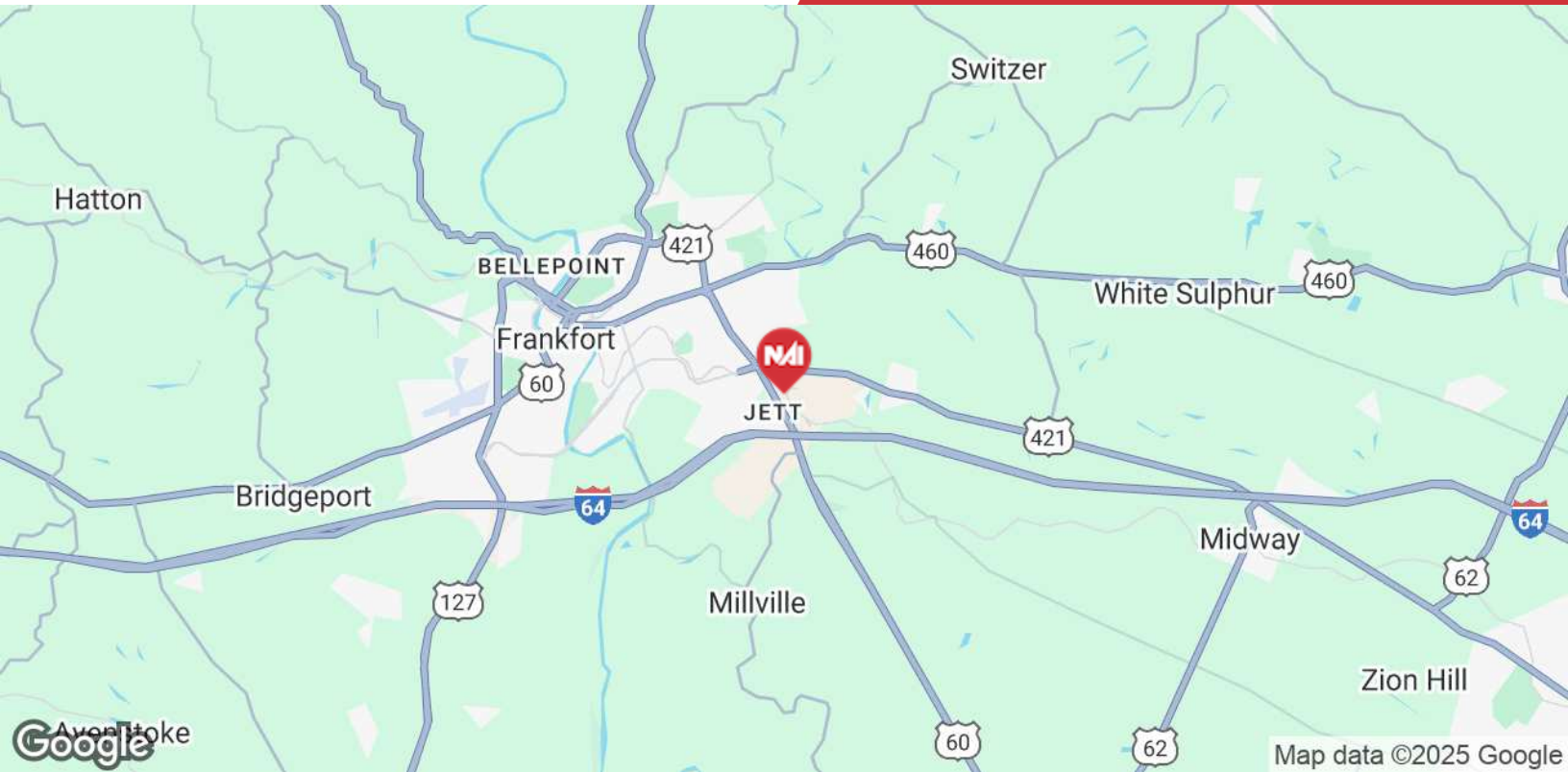




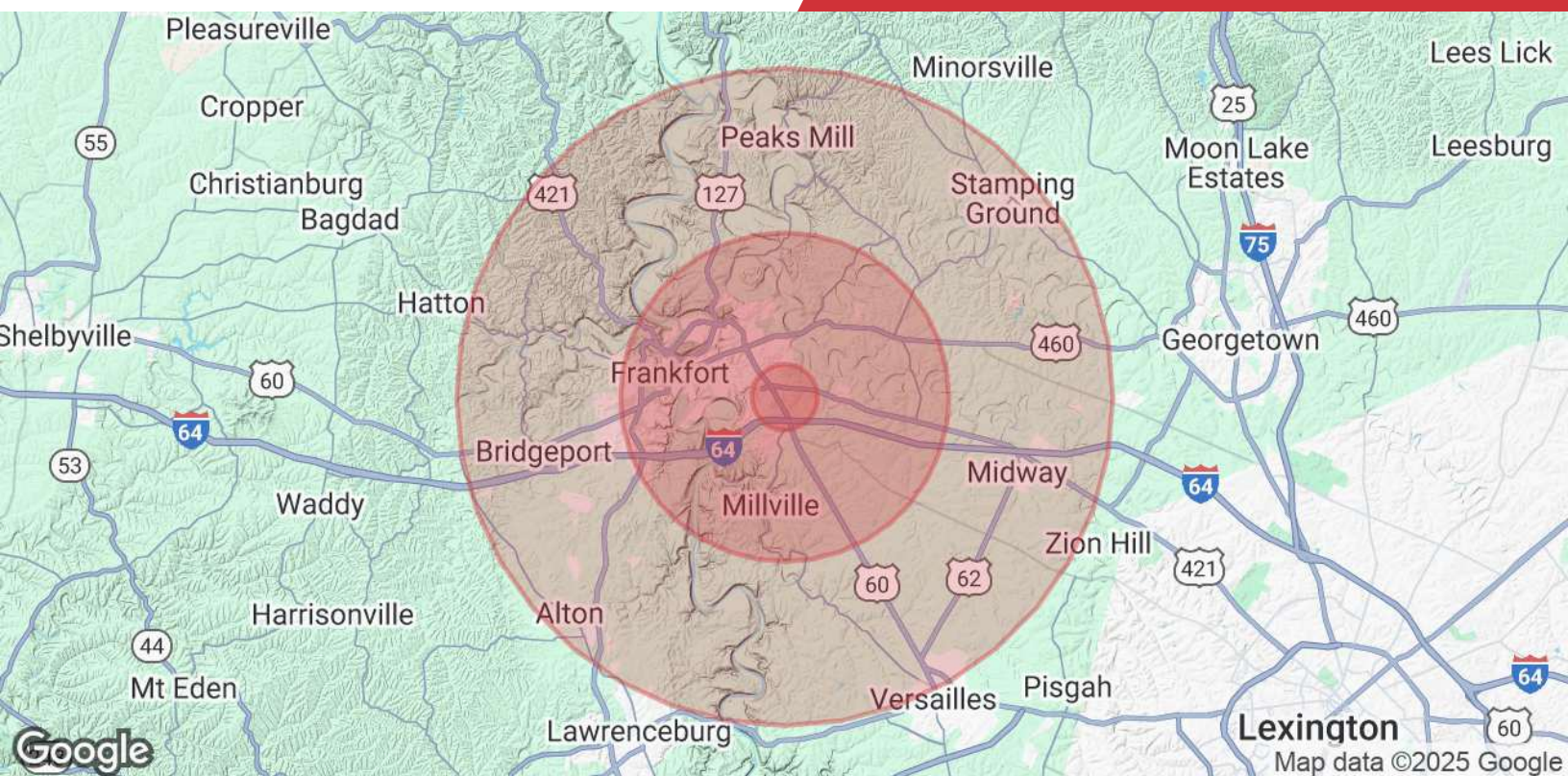












### Population

	1 Mile	5 Miles	10 Miles
<b>Total Population</b>	2,499	37,700	68,866
<b>Average Age</b>	41.3	37.4	38.2
<b>Average Age (Male)</b>	39.0	36.4	37.3
<b>Average Age (Female)</b>	44.3	38.2	39.3

### Households & Income

	1 Mile	5 Miles	10 Miles
<b>Total Households</b>	1,107	16,308	28,653
<b># of Persons per HH</b>	2.3	2.3	2.4
<b>Average HH Income</b>	\$101,086	\$88,677	\$92,399
<b>Average House Value</b>	\$177,652	\$145,173	\$159,661

\* Demographic data derived from 2022