

FOR SALE

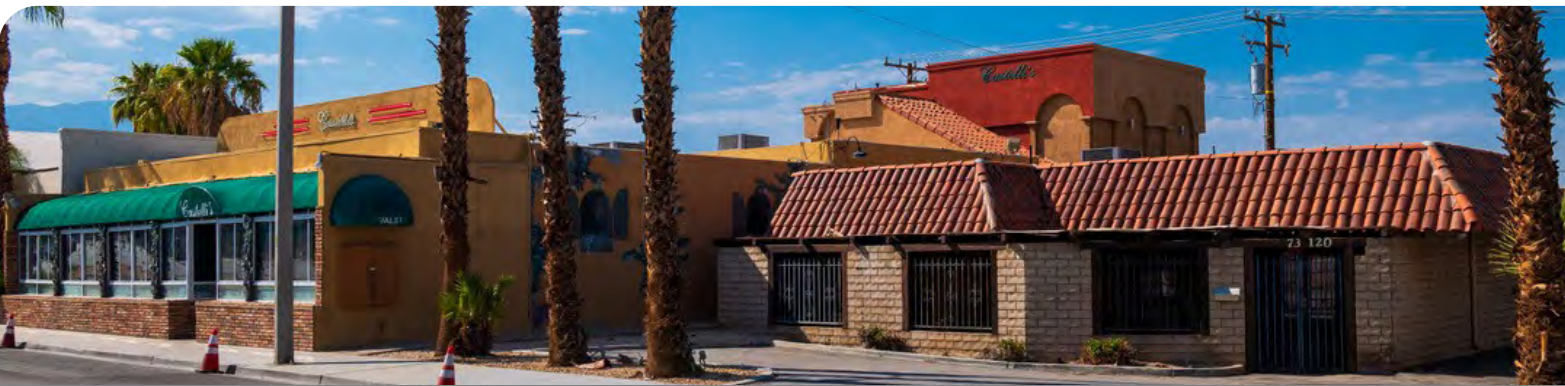
RETAIL/OFFICE BUILDING

73120 HIGHWAY 111 | PALM DESERT, CA 92260



2,782 SF RETAIL/OFFICE BUILDING \$1,070,000.00

- Rare stand-alone small building fronting Highway 111
- Former veterinary office improvements in place
- Just 2,782 SF with ample parking on this 10,890 SF parcel
- Easy access, near the intersection of Highway 111 & Monterey Avenue



Fabio Ceresa
fceresa@leedesert.com
Mobile: 760.218.0103
Office: 760.346.2522
LIC #01304059

73000 Highway 111, Suite 200 | Palm Desert, CA 92260 | www.LeePalmDesert.com | Corp ID # 01911964



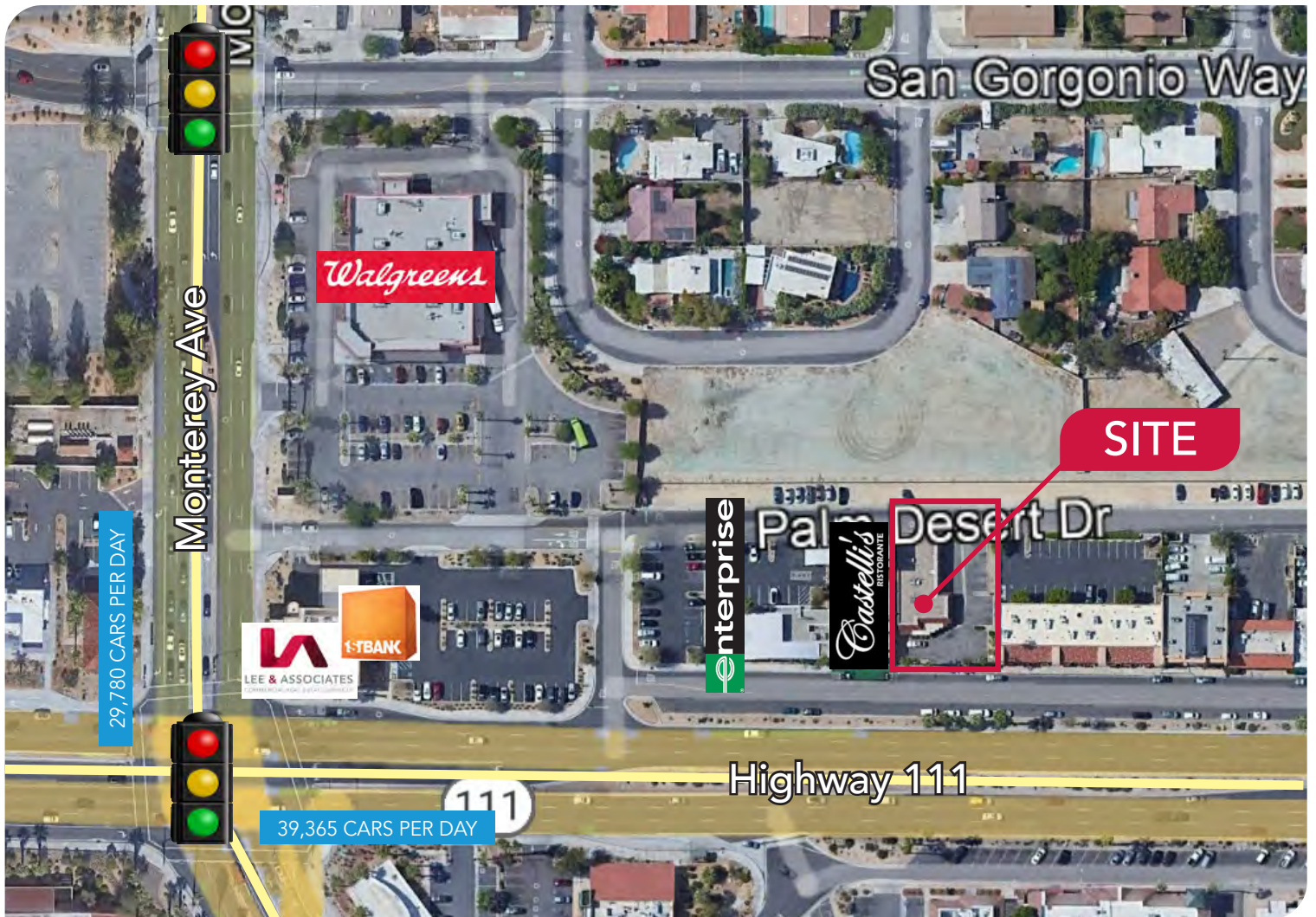
All information furnished regarding property for sale, rental or financing is from sources deemed reliable, but no warranty or representation is made to the accuracy thereof and same is submitted to errors, omissions, change of price, rental or other conditions prior to sale, lease or financing or withdrawal without notice. No liability of any kind is to be imposed on the broker herein.

FOR SALE

RETAIL/OFFICE BUILDING

73120 HIGHWAY 111 | PALM DESERT, CA 92260

LEE & ASSOCIATES
COMMERCIAL REAL ESTATE SERVICES



DEMOGRAPHICS

DEMOGRAPHICS

	1 MILE	3 MILES	5 MILES
POPULATION	10,072	47,269	84,138
HOUSEHOLDS	4,637	23,411	42,379
HH INCOME	\$99,546	\$145,877	\$155,767

LEE & ASSOCIATES
COMMERCIAL REAL ESTATE SERVICES

Fabio Ceresa
fceresa@leedesert.com
Mobile: 760.218.0103
Office: 760.346.2522
LIC #01304059

73000 Highway 111, Suite 200 | Palm Desert, CA 92260 | www.LeePalmDesert.com | Corp ID # 01911964



All information furnished regarding property for sale, rental or financing is from sources deemed reliable, but no warranty or representation is made to the accuracy thereof and same is submitted to errors, omissions, change of price, rental or other conditions prior to sale, lease or financing or withdrawal without notice. No liability of any kind is to be imposed on the broker herein.

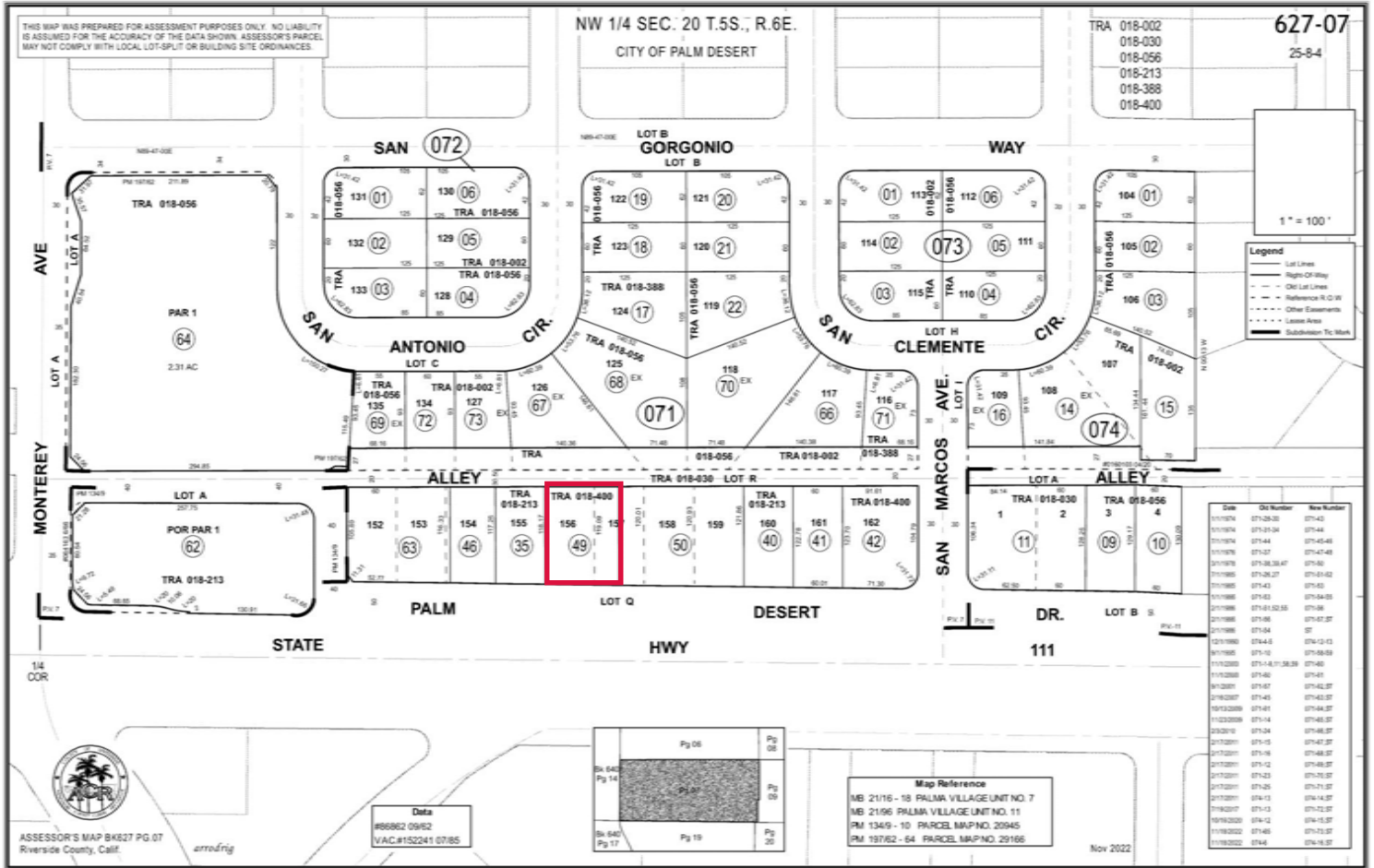
FOR SALE

RETAIL/OFFICE BUILDING

73120 HIGHWAY 111 | PALM DESERT, CA 92260



PARCEL MAP



73000 Highway 111, Suite 200 | Palm Desert, CA 92260 | www.LeePalmDesert.com | Corp ID # 01911964

Fabio Ceresa
fceresa@leedesert.com
 Mobile: 760.218.0103
 Office: 760.346.2522
 LIC #01304059



All information furnished regarding property for sale, rental or financing is from sources deemed reliable, but no warranty or representation is made to the accuracy thereof and same is submitted to errors, omissions, change of price, rental or other conditions prior to sale, lease or financing or withdrawal without notice. No liability of any kind is to be imposed on the broker herein.