

1390 W Evans Ave, Denver, Colorado

AVAILABILITY:

Unit 2-O..... 4,921SF (\$10/SF NNN*)

***NNN's = \$4.07/SF, As of 6/30/24**

UNIT 2-O



MICHAEL BLOOM
REALTY COMPANY

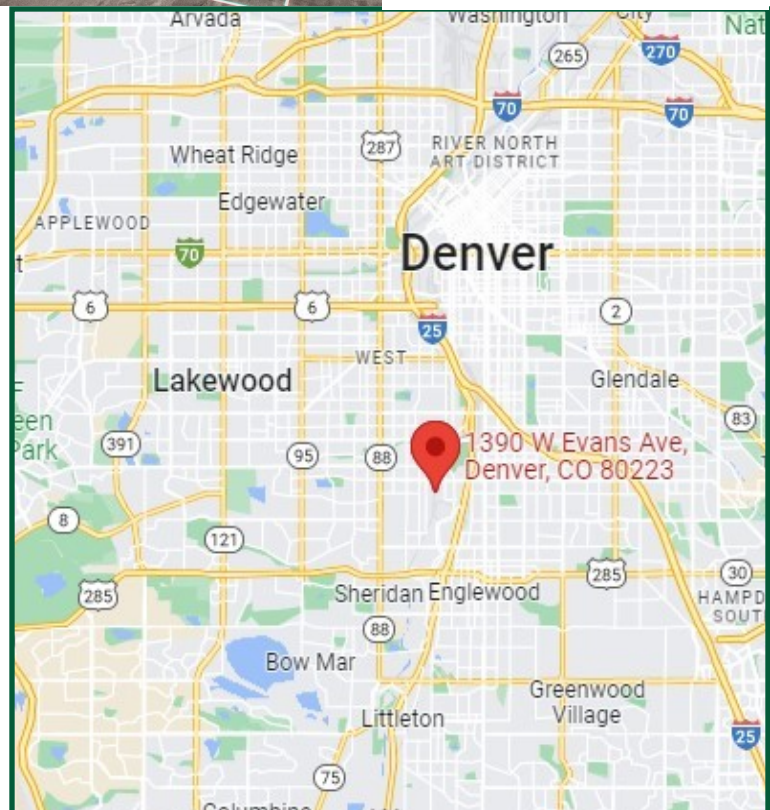


PROPERTY DESCRIPTION:

CONVENIENTLY LOCATED, WELL BUILT AND MAINTAINED CONCRETE BUILDING. HIGHLY ADAPTABLE FOR USE AS WAREHOUSE, SHOWROOM, MANUFACTURING, DISTRIBUTION, OR SERVICE FACILITY.

IMPORTANT FEATURES:

- SMALL OUTSIDE STORAGE
- DRIVE IN LOADING
- GENEROUS PARKING AND LOADING AREAS
- 20' CEILING HEIGHT
- 3-PHASE ELECTRICAL

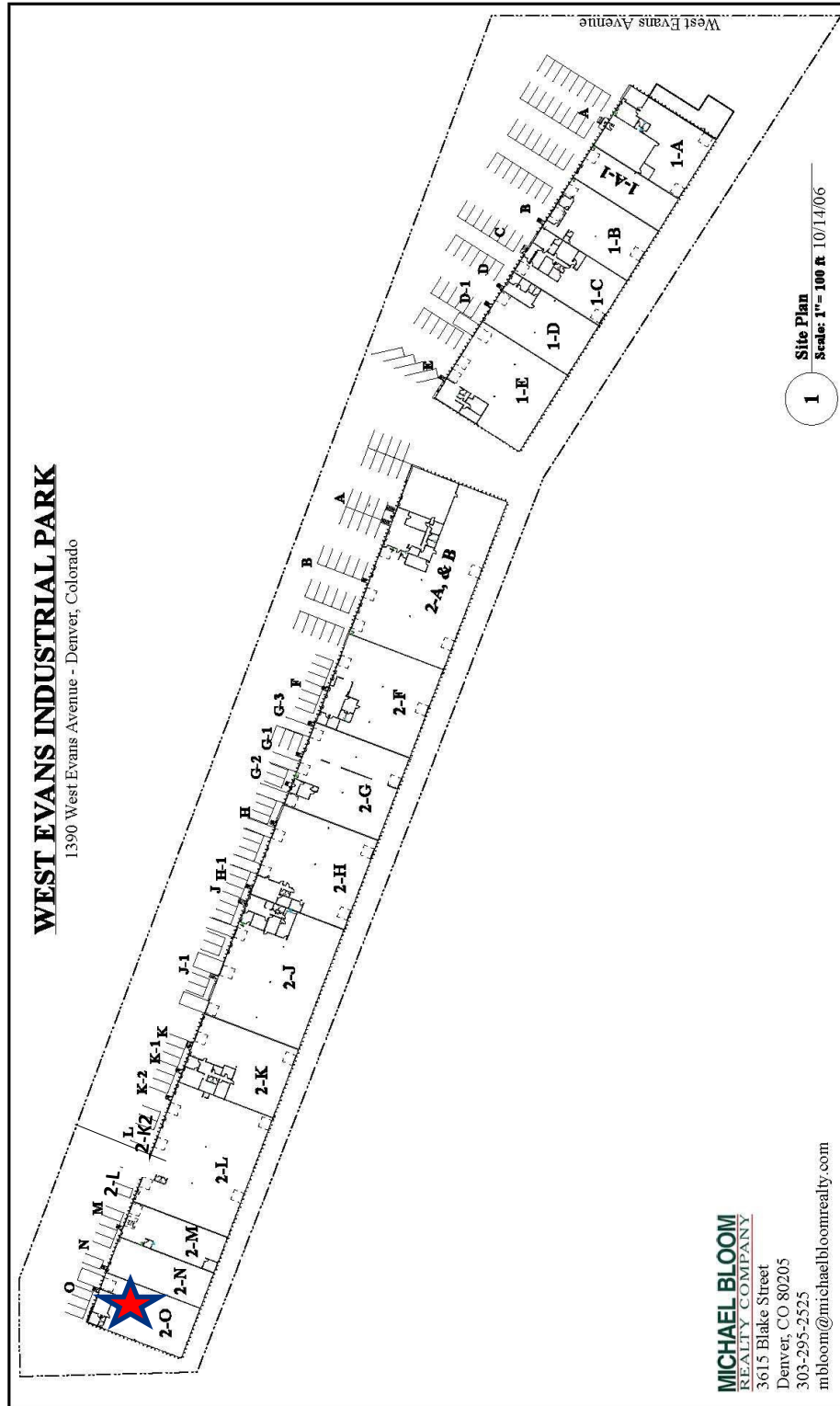


1390 West Evans Avenue
Denver, Colorado

M B R C

Space Availability:

Available	Total SQ FT	Office SQ FT	Loading	Electrical
2-O	4,921	511	1 Drive In	3 Phase



MICHAEL BLOOM
REALTY COMPANY
3615 Blake Street
Denver, CO 80205
303-295-2525
mbloom@michaelbloomrealty.com

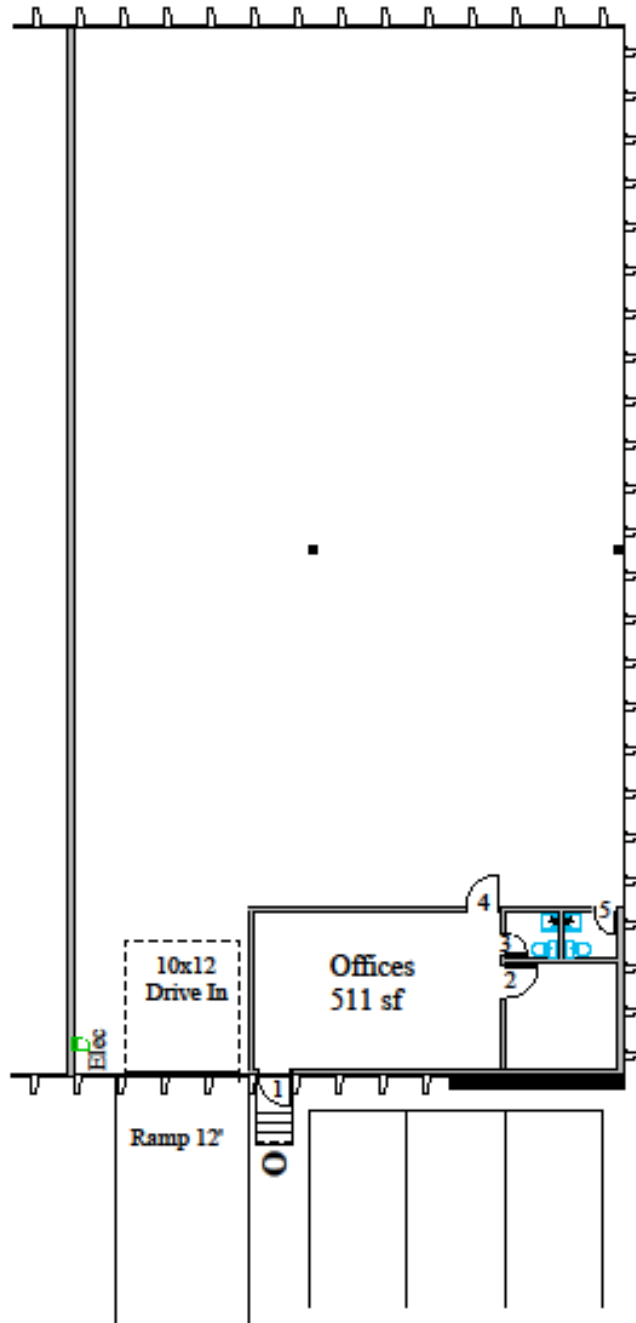
Brokerage Disclosure



1390 West Evans Avenue
Denver, Colorado

M B R C

1390 West Evans 2-O



MICHAEL BLOOM
REALTY COMPANY

300 South Jackson Street, Suite 440
Denver CO 80209
303-295-2525
mbloom@michaelbloomrealty.com
www.michaelbloomrealty.com



Floor Plan 4,921 sf
Scale: 1/16" = 1'-0"