

## For Sale

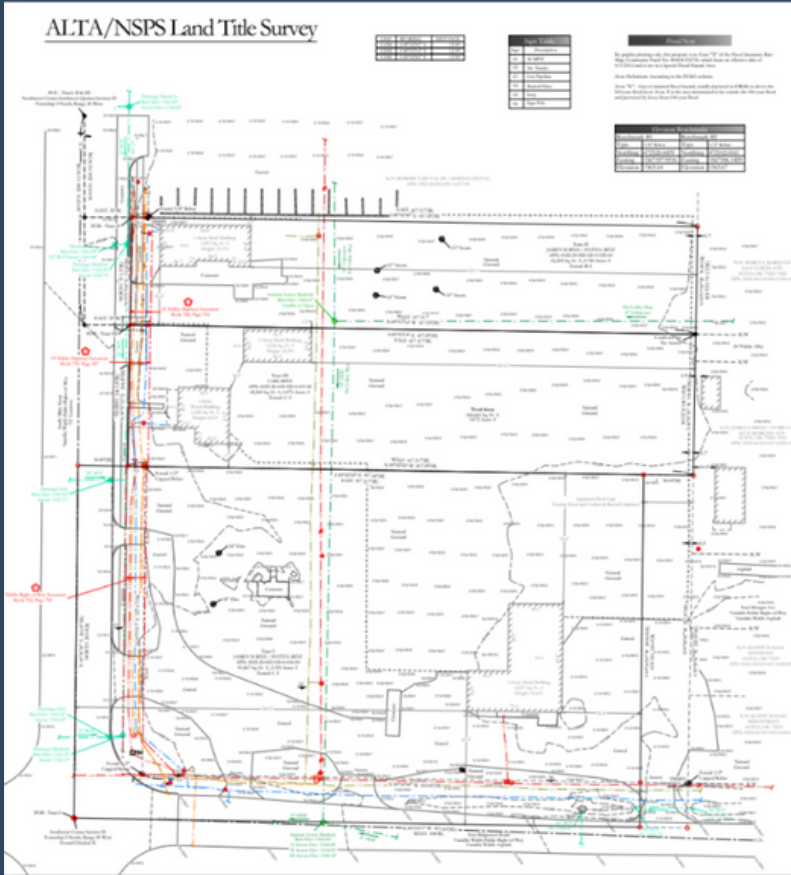
## S Main St. & E Ridgecrest Rd.

### Available Land | Altus, OK | Call For Pricing

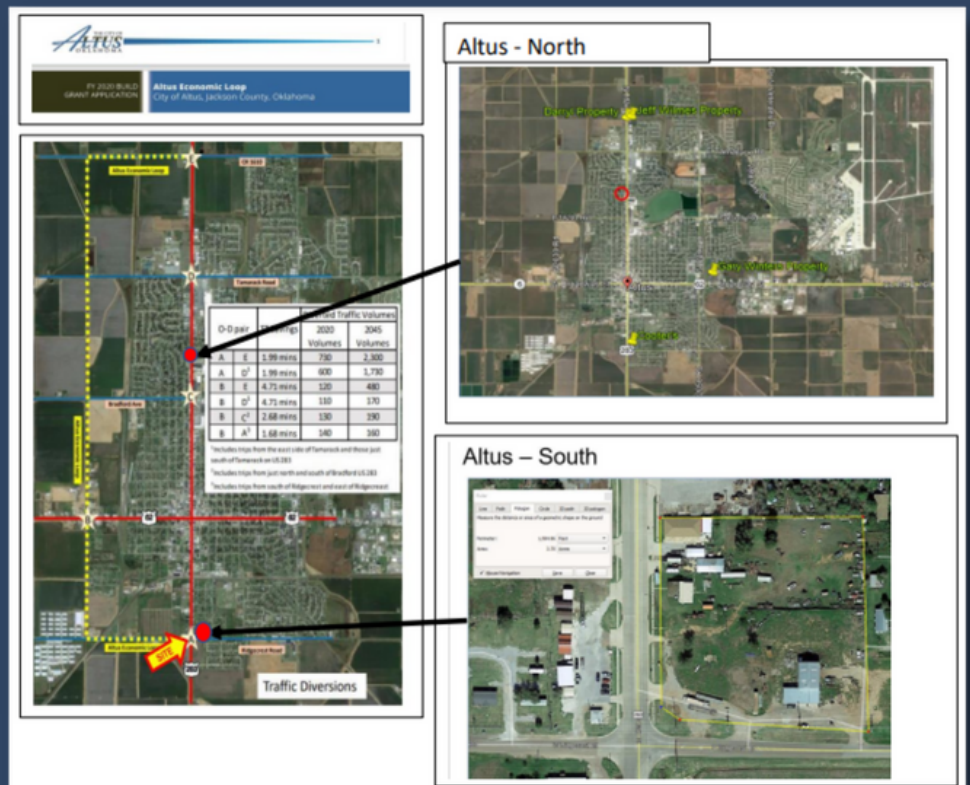


## PROPERTY DETAILS

- Economic Loop Impact
  - The 3.87 acre property is situated on the Relief Route ("Economic Loop"), which will divert traffic off of Main St. This will be a positive effect to South Altus, since the relief route culminates at the intersection of Ridgecrest & Main (Hwy 283).
- Directly across the street from the brand new Allsup's Truck Stop.
- Auto-Urban Commercial (AC)



## ECONOMIC LOOP



# PLAINS

