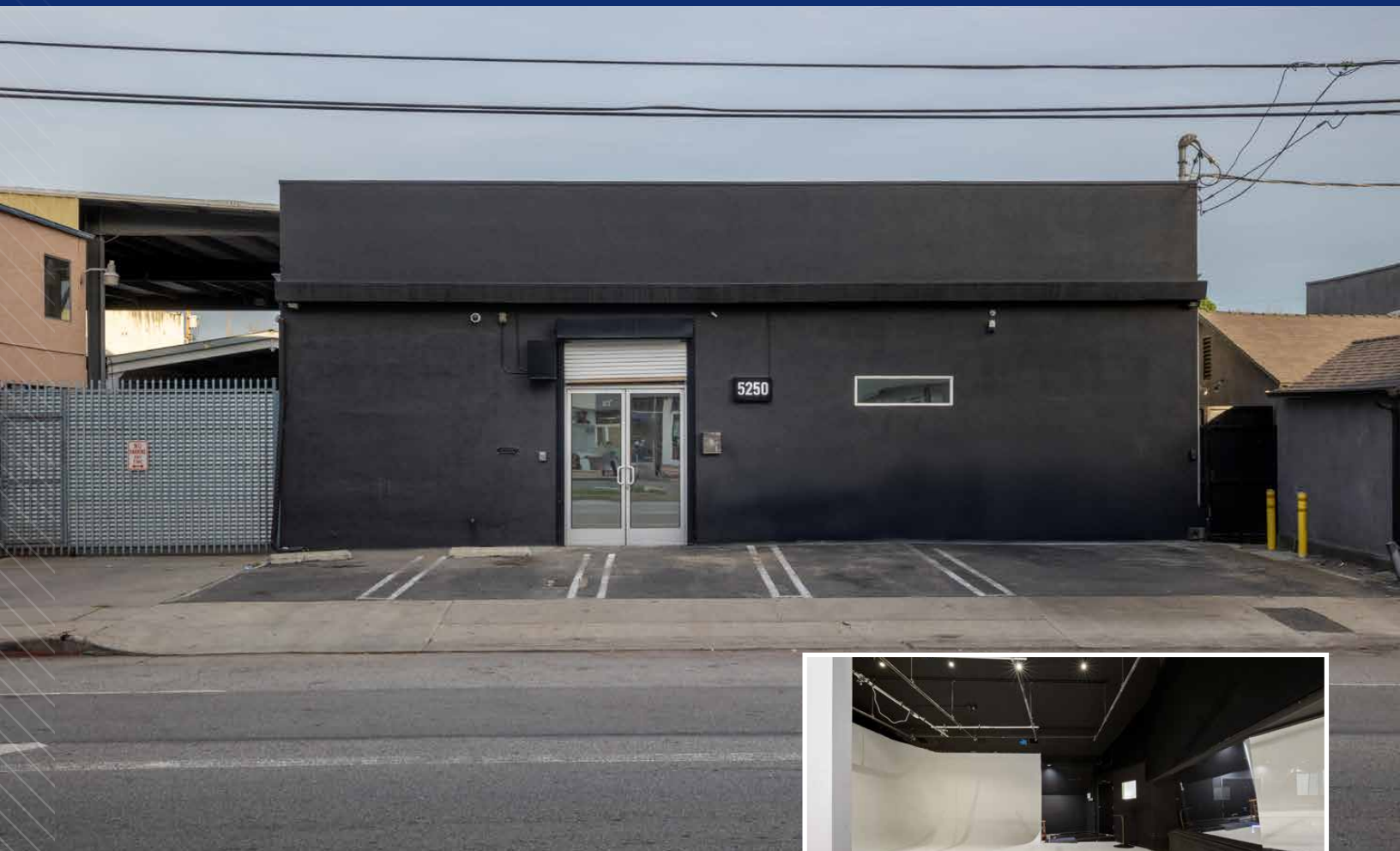


FOR LEASE

# 5250 Vineland Ave

North Hollywood, CA 91601

## 5,340 SF RBA OFFICE SPACE



## PROPERTY HIGHLIGHTS & DETAILS

- Sublease space available from current tenant
- 1 Conference Room
- Plug & Play
- Lease rate does not include utilities, property expenses or building services
- High End Trophy Space

<b>SF RBA</b>	5,340
<b>Building Height</b>	1 Story
<b>Built</b>	1948/2002
<b>Parking</b>	9 Surface Spaces/ Covered Parking
<b>Building Class</b>	C

FOR LEASING  
INQUIRIES CONTACT:

**Terry Adams**

CABRE# 01432125 | 818.620.7232 | [terryadamscre@outlook.com](mailto:terryadamscre@outlook.com)



FOR LEASE

# 5250 Vineland Ave

North Hollywood, CA 91601

5,340 SF RBA  
OFFICE SPACE



FOR LEASING  
INQUIRIES CONTACT:

**Terry Adams**

CABRE# 01432125 | 818.620.7232 | [terryadamscre@outlook.com](mailto:terryadamscre@outlook.com)



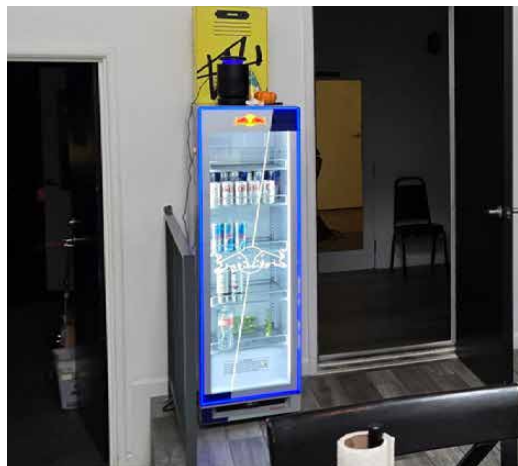


FOR LEASE

# 5250 Vineland Ave

North Hollywood, CA 91601

5,340 SF RBA  
OFFICE SPACE



FOR LEASING  
INQUIRIES CONTACT:

**Terry Adams**

CABRE# 01432125 | 818.620.7232 | [terryadamscre@outlook.com](mailto:terryadamscre@outlook.com)



FOR LEASE

# 5250 Vineland Ave

North Hollywood, CA 91601

5,340 SF RBA  
OFFICE SPACE



FOR LEASING  
INQUIRIES CONTACT:

**Terry Adams**

CABRE# 01432125 | 818.620.7232 | [terryadamscre@outlook.com](mailto:terryadamscre@outlook.com)





FOR LEASE

# 5250 Vineland Ave

North Hollywood, CA 91601

5,340 SF RBA  
OFFICE SPACE



For Leasing  
Inquiries Contact:

**Terry Adams**

CABRE# 01432125 | 818.620.7232 | terryadamscre@outlook.com



The information contained in the following Offering Memorandum is proprietary and strictly confidential. It is intended to be reviewed only by the party receiving it from Coldwell Banker Commercial and should not be made available to any other person or entity without the written consent of Coldwell Banker Commercial.