

INDUSTRIAL REALTY SOLUTIONS

ALL INDUSTRIAL...ALL THE TIME



4.29 ACRE MOL INDUSTRIAL SITE

114TH AVENUE NORTH, LARGO, FLORIDA 33773



- 4.29 ACRE MOL INDUSTRIAL SITE
- E-1 ZONING - PINELLAS COUNTY, FL
- LIGHT INDUSTRIAL USES
- FEW AVAILABLE INDUSTRIAL SITES
- MID PINELLAS COUNTY LOCATION
- FOR SALE: CONTACT BROKER

FOR ADDITIONAL INFORMATION CONTACT:
DERON THOMAS, CCIM, SIOR
CELL (727) 204-0201
TYLER THOMAS, JD
KYLE HARRIS
OFFICE (727) 724-3300

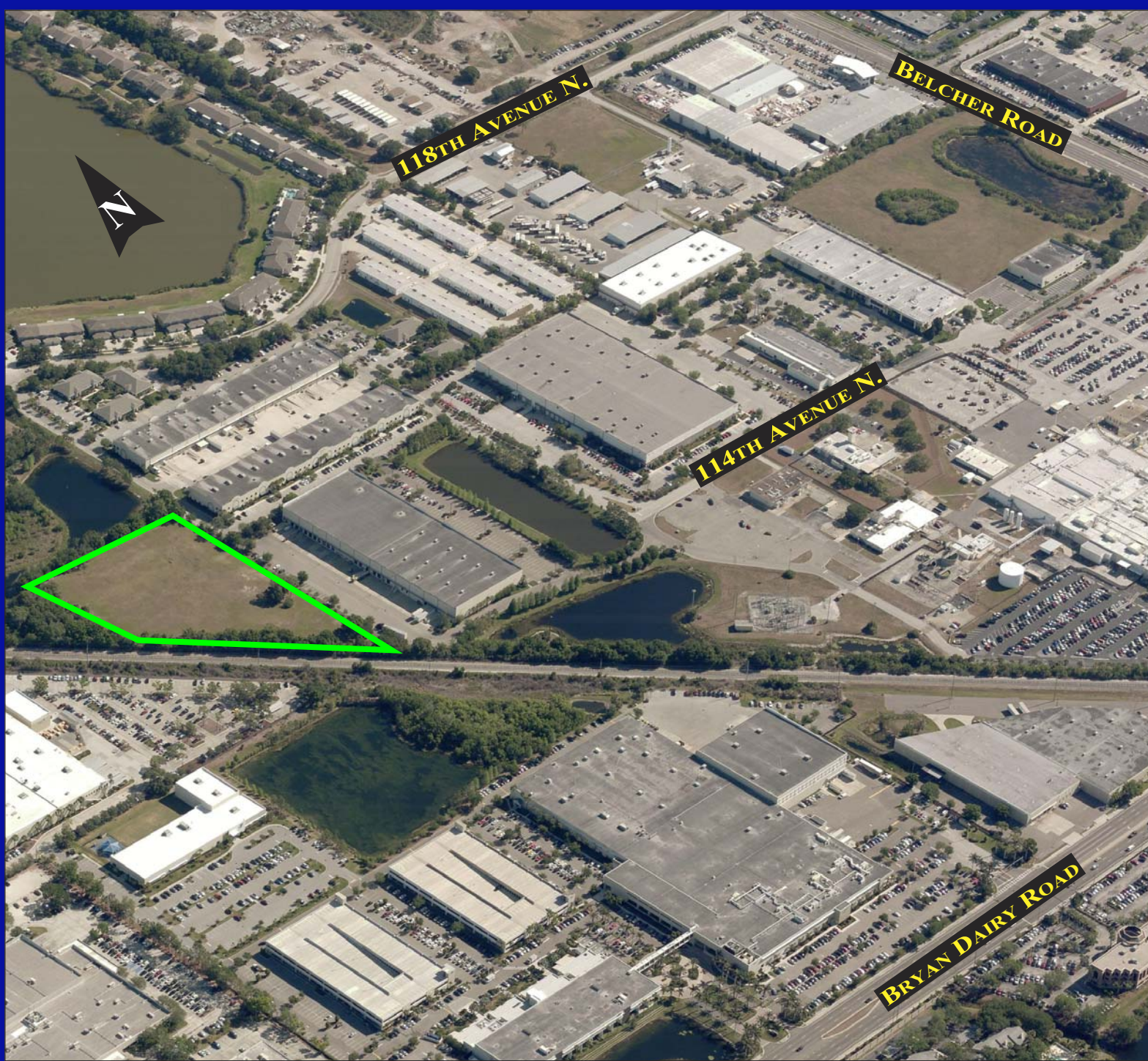


INDUSTRIAL REALTY SOLUTIONS, INC.
701 ENTERPRISE ROAD E., SUITE 701
SAFETY HARBOR, FL 34695
DT@INDUSTRIALREALTYSOLUTIONS.COM
WWW.INDUSTRIALREALTYSOLUTIONS.COM

No warranty or representation, expressed or implied is made as to the accuracy of the information contained herein, and same is submitted subject to errors, omissions, changes of price, rental or other conditions, and to special conditions imposed by our principals.

INDUSTRIAL REALTY SOLUTIONS

ALL INDUSTRIAL...ALL THE TIME



FOR ADDITIONAL INFORMATION CONTACT:
DERON THOMAS, CCIM, SIOR
CELL (727) 204-0201
TYLER THOMAS, JD
KYLE HARRIS
OFFICE (727) 724-3300

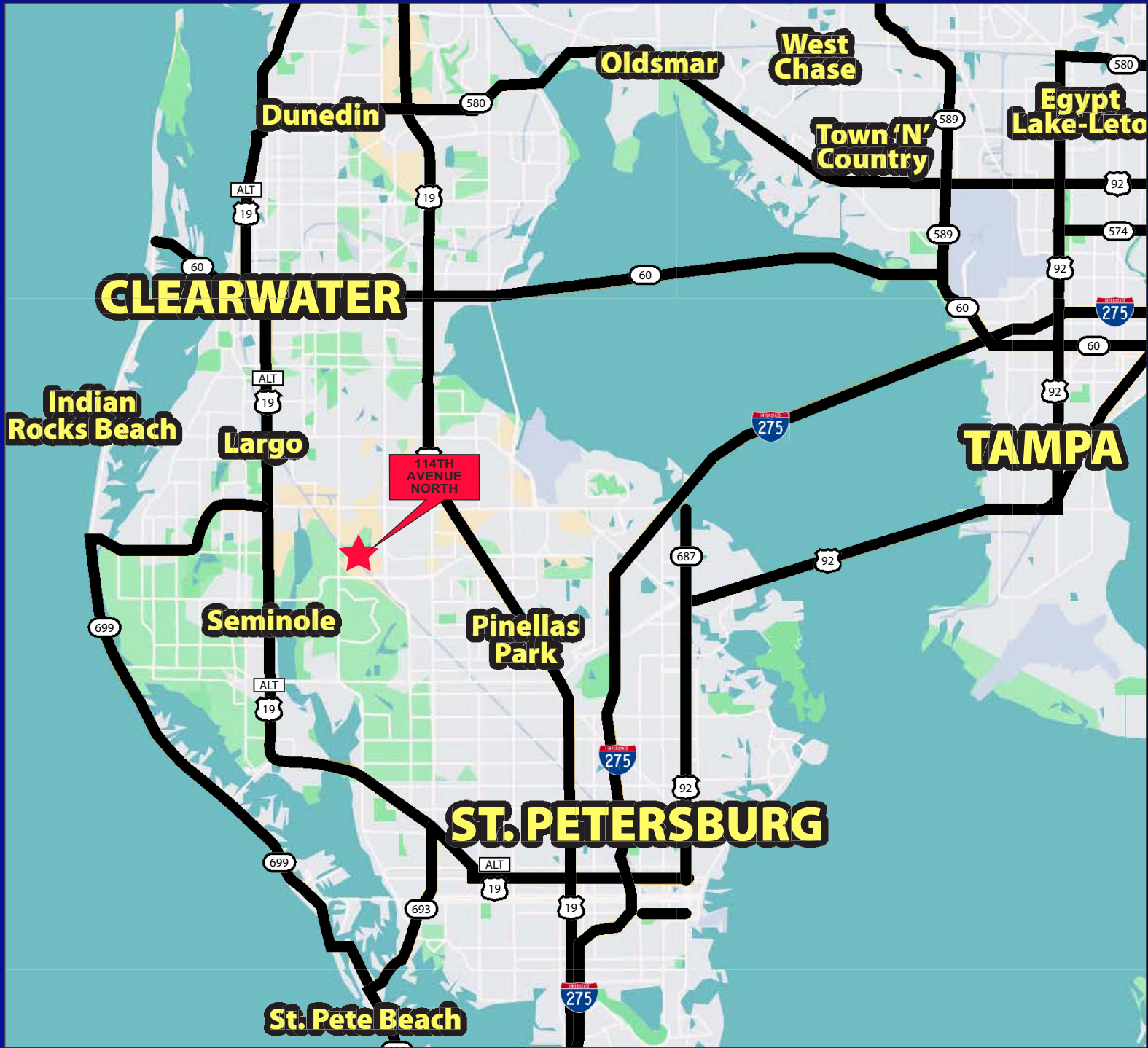


INDUSTRIAL REALTY SOLUTIONS, INC.
701 ENTERPRISE ROAD E., SUITE 701
SAFETY HARBOR, FL 34695
DT@INDUSTRIALREALTYSOLUTIONS.COM
WWW.INDUSTRIALREALTYSOLUTIONS.COM

No warranty or representation, expressed or implied is made as to the accuracy of the information contained herein, and same is submitted subject to errors, omissions, changes of price, rental or other conditions, and to special conditions imposed by our principals.

INDUSTRIAL REALTY SOLUTIONS

ALL INDUSTRIAL...ALL THE TIME



FOR ADDITIONAL INFORMATION CONTACT:
DERON THOMAS, CCIM, SIOR
 CELL (727) 204-0201
TYLER THOMAS, JD
KYLE HARRIS
 OFFICE (727) 724-3300



INDUSTRIAL REALTY SOLUTIONS, INC.
 701 ENTERPRISE ROAD E., SUITE 701
 SAFETY HARBOR, FL 34695
 DT@INDUSTRIALREALTYSOLUTIONS.COM
 WWW.INDUSTRIALREALTYSOLUTIONS.COM

No warranty or representation, expressed or implied is made as to the accuracy of the information contained herein, and same is submitted subject to errors, omissions, changes of price, rental or other conditions, and to special conditions imposed by our principals.