



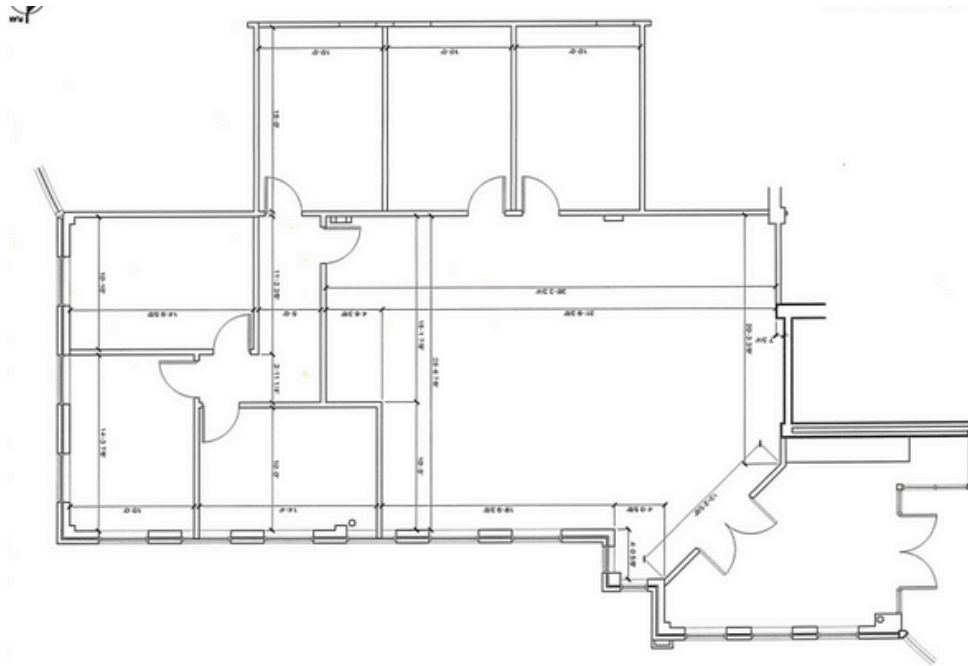
**CLASS A OFFICE SPACE**  
**FOR**  
**LEASE**

PLAZA OFFICE  
PARK

9500-9520  
ORMSBY STATION ROAD



# PLAZA III FLOOR PLAN OPTIONS



## Suite 125

Square Footage: 2,504 SF

Offices: 5-6

Conference Room: 1

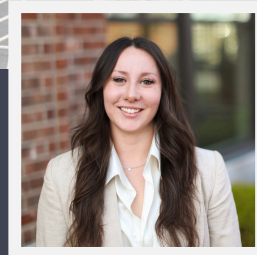
# PROPERTY PHOTOS







Mike DeHart  
mdehart@hcrky.com  
502.500.2504



Emma Noble  
enoble@hcrky.com  
765.810.7335