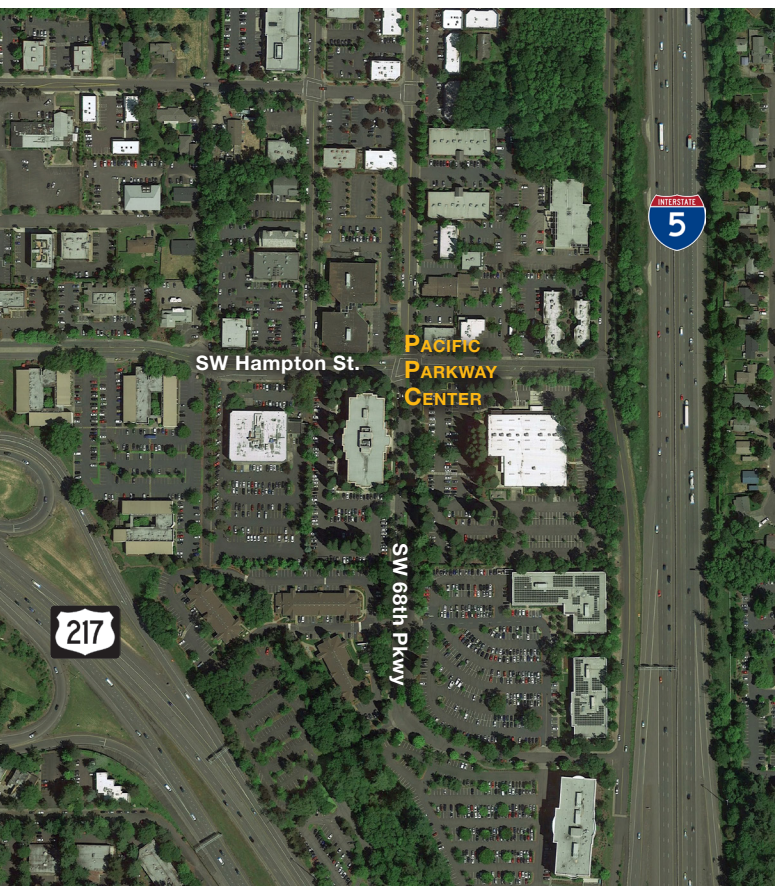


Pacific Parkway Center

12909 SW 68th Parkway Portland • 1,694 sq.ft. Office



LOCATION

Building B
12909 SW 68th Parkway
Suite 430
Portland, OR 97223

TOTAL SQ. FT.

1,694 sq.ft.

FEATURES

- Building conference room
- 4/1,000 parking ratio
- Upgraded common areas
- Convenience market
- Easy access to I-5

ANNUAL RATE

\$36.00/sq.ft.
Full Service

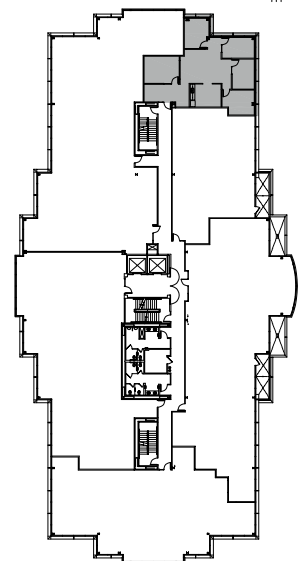
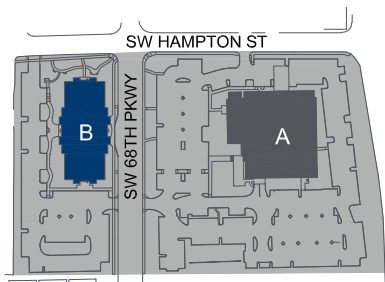
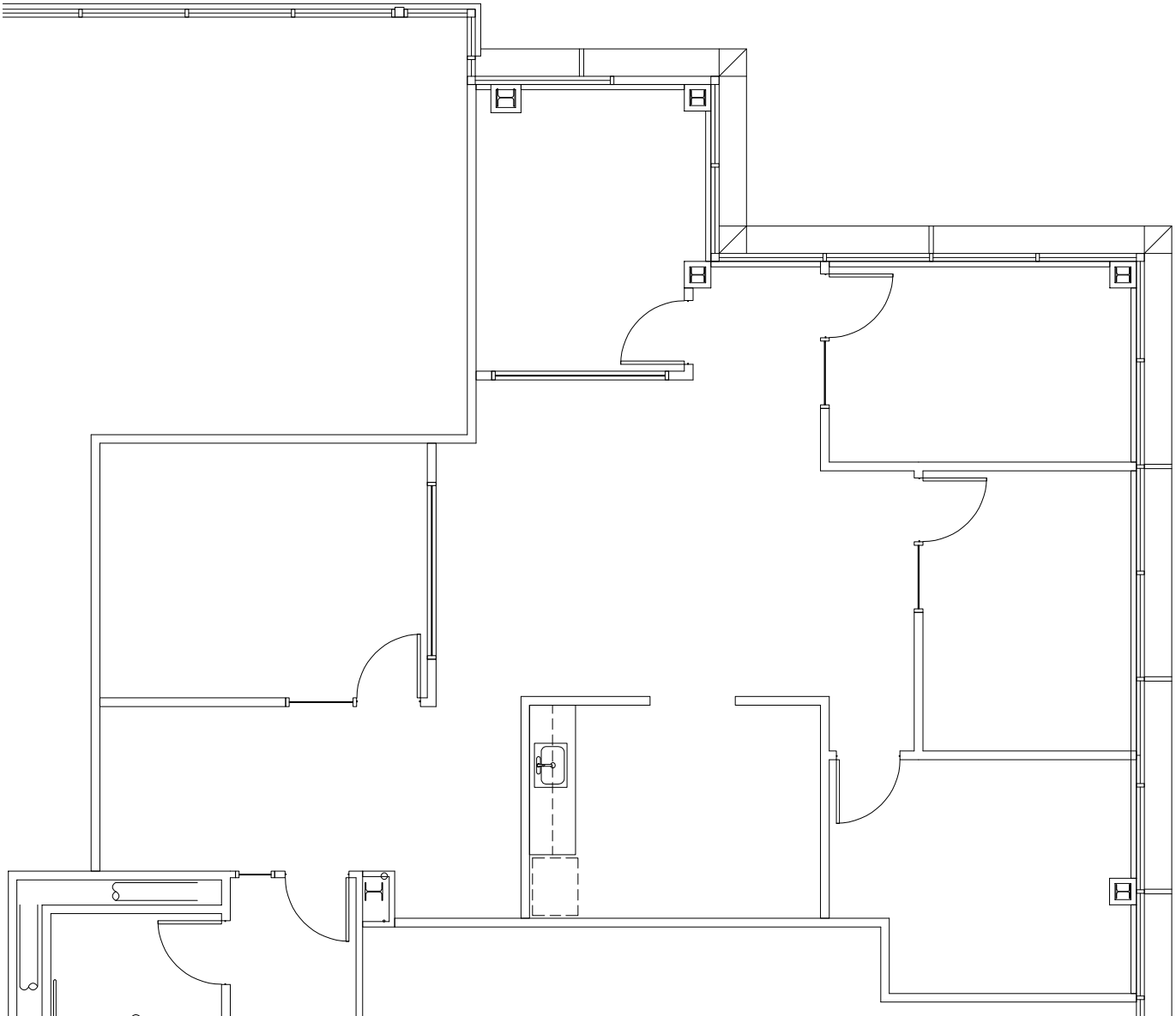
LEASING CONTACTS

Sam Briggs
samb@pactrust.com
503.624.6300

Jake Bigby
jakeb@pactrust.com
503.624.6300

Caitlin Knecht
caitlink@pactrust.com
503.624.6300





FOURTH FLOOR BUILDING PLAN

PACIFIC PARKWAY CENTER
Portland, OR 97223



15350 SW Sequoia Pkwy Suite 300 Portland OR 97224 • 503.624.6300 • pactrust.com

The square footage and rates quoted herein are subject to change. Square footage and rates are finalized with a signed lease agreement.

