



**FOR LEASE**  
±5,500 SF

# ST. THOMAS SQUARE

180 Parkway 575

Restaurant Space  
Woodstock, GA  
30188



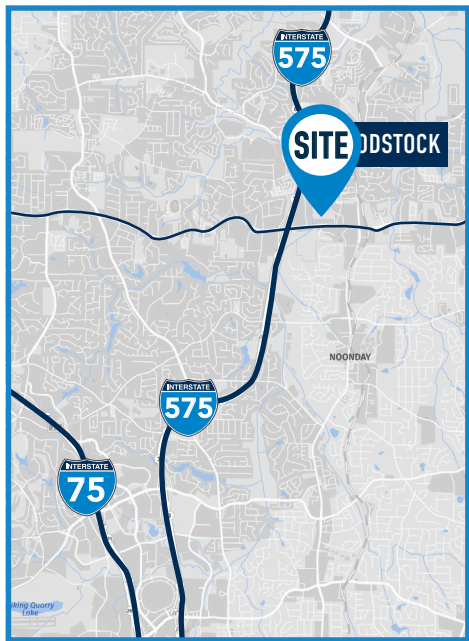
## OVERVIEW:

- » 5,500 SF restaurant
- » Frontage on Hwy 92
- » Abundant, well-lit parking
- » Immediate access from I-575, Hwy 92 / Alabama Rd
- » Multiple entry points
- » Over 60,000 VPD pass by the property

- » Current shopping center tenants include:
  - » Starbucks
  - » Waffle House
  - » Honey Bee Salon and Spa
  - » Impact PT
  - » One Main Financial
  - » Superior Stair
  - » Top Notch Appliance
  - » & more

**Jake Parker**  
770.891.6429  
jparker@skcr.com

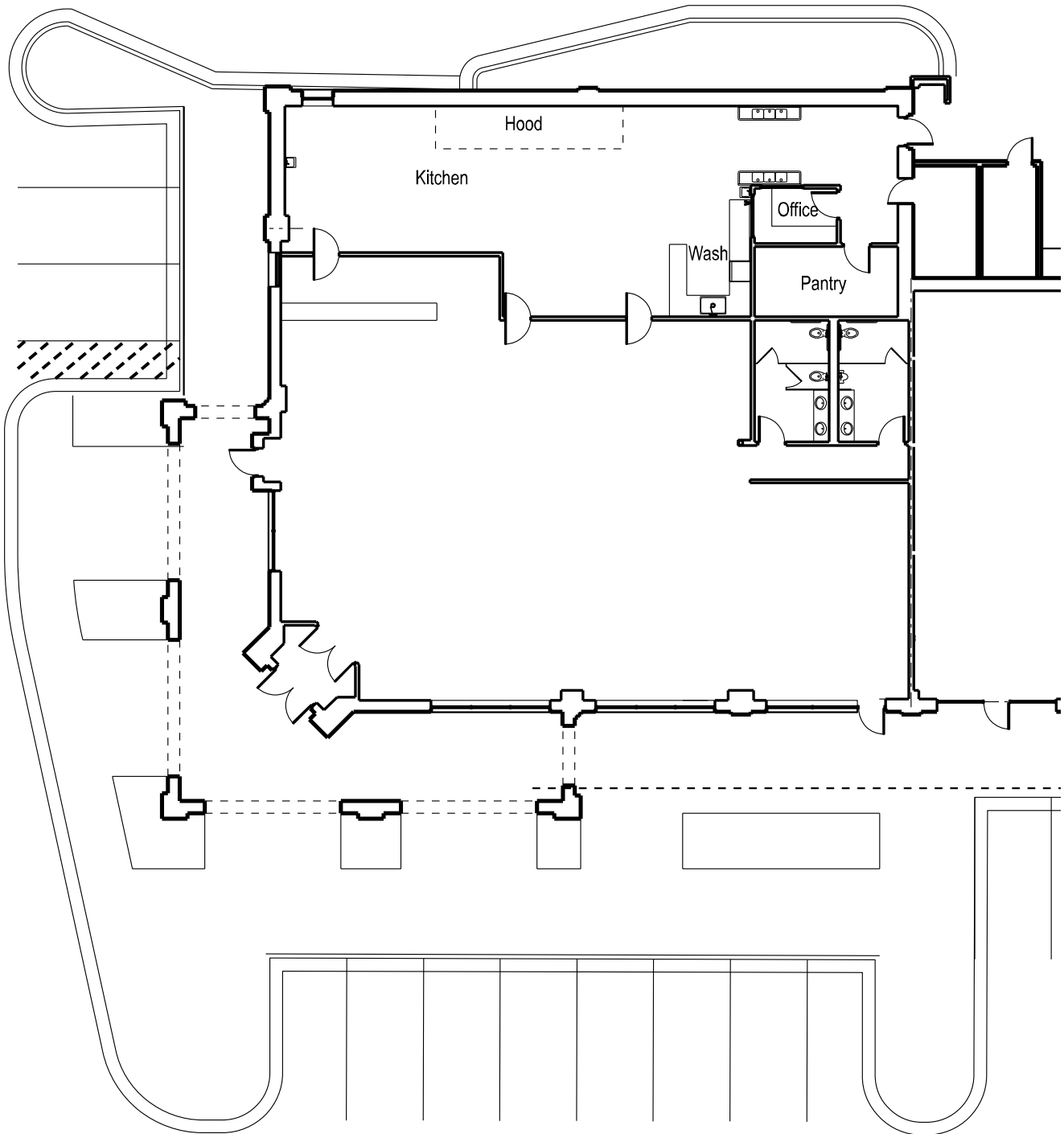
**Furman Wood**  
404.803.8412  
fwood@skcr.com



# ST. THOMAS SQUARE

180 Parkway 575

**FLOOR PLAN**  
**±5,500 SF**



Jake Parker  
770.891.6429  
jparker@skcr.com

Furman Wood  
404.803.8412  
fwood@skcr.com





# ST. THOMAS SQUARE

180 Parkway 575

## NEARBY AMENITIES



## RESTAURANTS

- A Chicken Salad Chick
- B Taco Mac
- C Steak n Shake
- D Starbucks
- E Hacienda Cantina
- F Schlotzskys  
Smoothie King
- G IHOP
- H Caribou Coffee
- I Waffle House  
Starbucks
- J Arby's
- K Chick-fil-A  
Whataburger
- L Dunkin Donuts
- M Moes Southwest Grill  
Firehouse Subs
- N Raising Cane's
- O McDonalds
- P Subway
- Q Chipotle Mexican Grill
- R Popeyes  
Krispy Kreme

## SERVICES

- 1 CVS Pharmacy
- 2 Aylo Health
- 3 Home Depot  
AT&T
- 4 Delta Community Credit Union
- 5 Kohl's
- 6 Planet Fitness
- 7 Lowes
- 8 Fedex- Office Store
- 9 Verizon
- 10 Quicktrip
- 11 Hennessy Honda of Woodstock
- 12 Cherokee Golf Center
- 13 Peachtree Immediate Care
- 14 Woodstock Commons  
- Goodwill  
- Firestone Service Center
- 15 St. Thomas Square  
- Impact PT  
- Superior Stair  
- Honey Bee Salon & Spa  
- Top Notch Appliance

## HOTEL

- I Microtel Hotel
- II Fairfield Inn & Suites
- III In-Town Suites
- IV Hampton Inn
- V Comfort Suites

## GROCERY

- 1 Target
- 2 BJ's Wholesale
- 3 Sam's Club

Jake Parker  
770.891.6429  
jparker@skcr.com

Furman Wood  
404.803.8412  
fwood@skcr.com

