



# SCHLEICHER SELECT PROPERTIES

*THE RIGHT MOVE*

Casa de LaLa | 1901 E 5th Ave

2,081 SF | Office Building | Tampa, FL 33605 | \$925,000 (\$444.50/SF)

727-201-2277 | [diane@sspproperties.com](mailto:diane@sspproperties.com)



# WELCOME TO CASA DE LALA

A stand-alone property in the heartbeat of Ybor City, where history, walkability, and creative energy meet. Whether you're looking for a turn-key office, a boutique retail space, or an investment in one of Tampa's fastest-developing districts, this building brings big possibilities in a compact footprint.

Built in 1930 and thoughtfully updated, the property delivers character, charm, and function—with plenty of indoor workspace plus outdoor seating, parking, and the kind of curb presence that gets noticed.



## A RARE SLICE OF YBOR CITY

### Corner Location, High Visibility

Positioned at the crossroads of foot traffic, vehicle flow, and neighborhood momentum. Just minutes from Downtown Tampa, Channelside, and Gasworx.

### Vibrant, Outdoor Space

A covered entrance, deck area, bar setup, fountain, and tropical landscaping make this building feel more like a destination than a structure.

### Historic, Versatile Interiors

Original bones meet contemporary updates for a timeless, turn-key opportunity. Offices, treatment rooms, studio spaces, or retail pods.

### Spacious On-site Parking

A rarity in Ybor: off-street parking for customers, staff, or tenants.





# QUICK FACTS

- Price: \$925,000
- Building: 2,081 SF
- Lot: 0.11 AC
- Zoning: YC-7 (creative commercial flexibility)
- Parking: Approximately 5 spaces
- Year Built: 1930
- Located in Opportunity Zone





# WHO THIS PROPERTY IS PERFECT FOR



## Boutique Retail or Concept Store

Think gallery, wellness, custom goods,  
or an experiential brand presence.

## Creative Studio or Agency HQ

Design, marketing, photography,  
or tattoo. Walkable, stylish, memorable.

## Professional Offices

Consultants, private practice, or  
business operations that want  
personality, not cubicles.

## Owner-User with Investment Mindset

Work in the front, rent out the  
back, or vice-versa.





An aerial photograph of a city street corner. In the center is a two-story yellow building with a flat roof and several arched windows on the ground floor. A red sign with white text is visible on the building's facade. To the left of the building is a large, leafy green tree. To the right is a palm tree. In the foreground, a white car is parked on the street. The background shows other buildings and more trees.

Ybor City has always been Tampa's cultural crossroads, and right now it's also a development magnet.

Within walking distance:

- Gasworx
- Boutique hotels
- Restaurants & cafes
- Breweries
- Galleries
- Historic venues

This is an area with momentum, and this property sits right in the middle of it.



# SEE WHY WE LOVE THIS

It's not just square footage on a parcel.

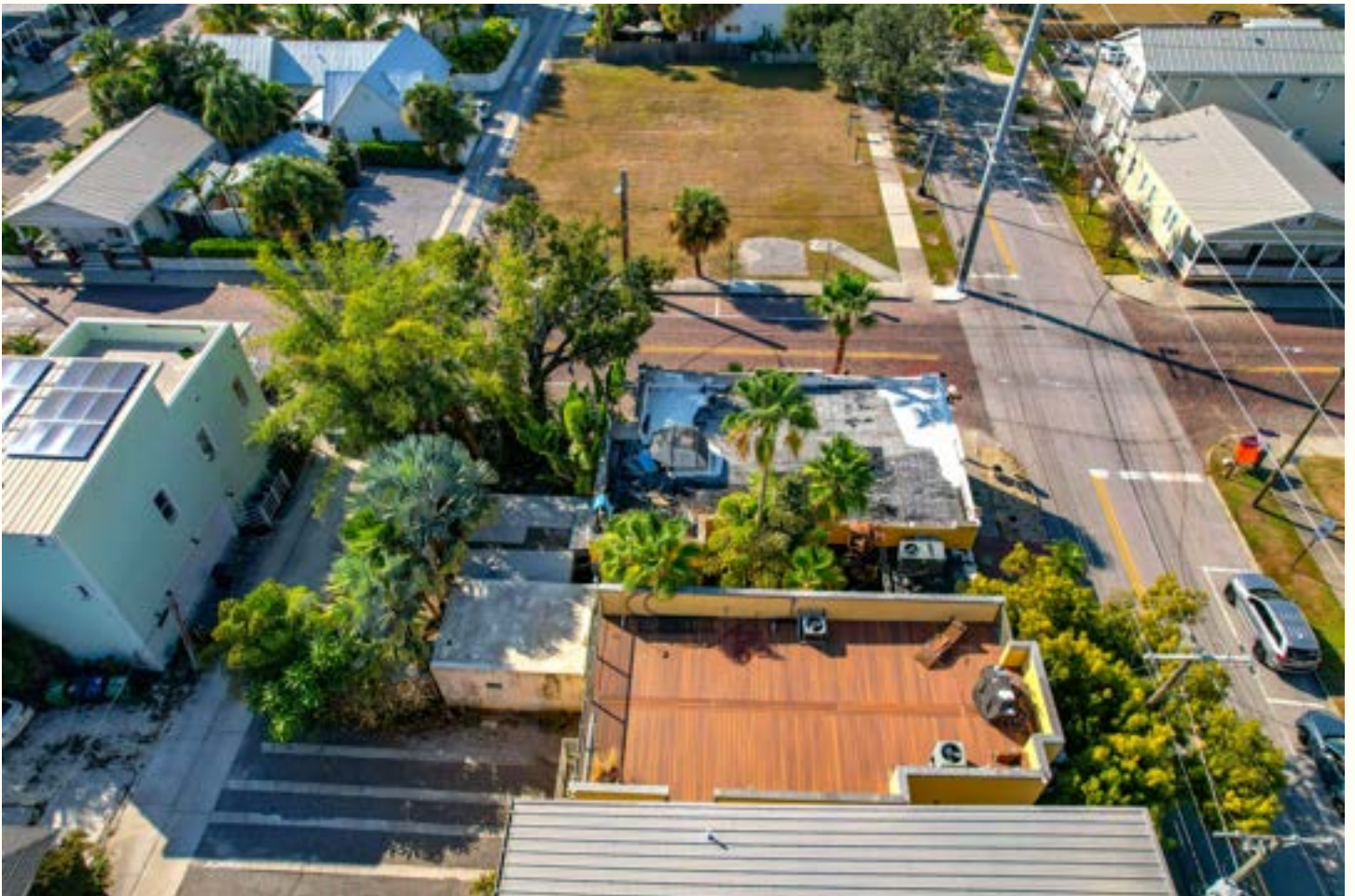
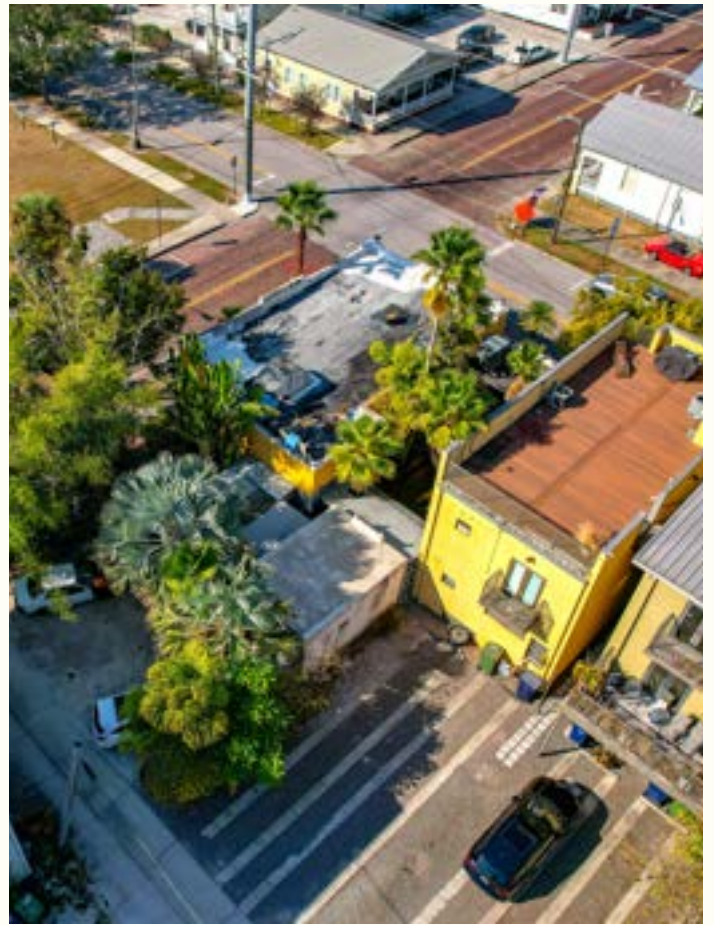
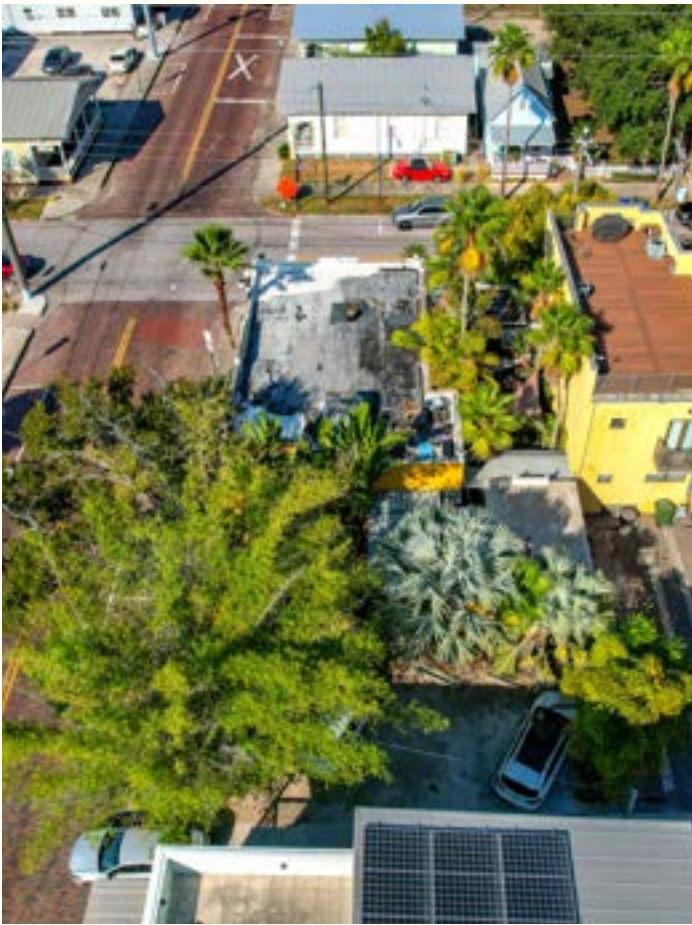
It's a space with style, a story, and room to write the next chapter.

A building that stands alone, literally and figuratively.

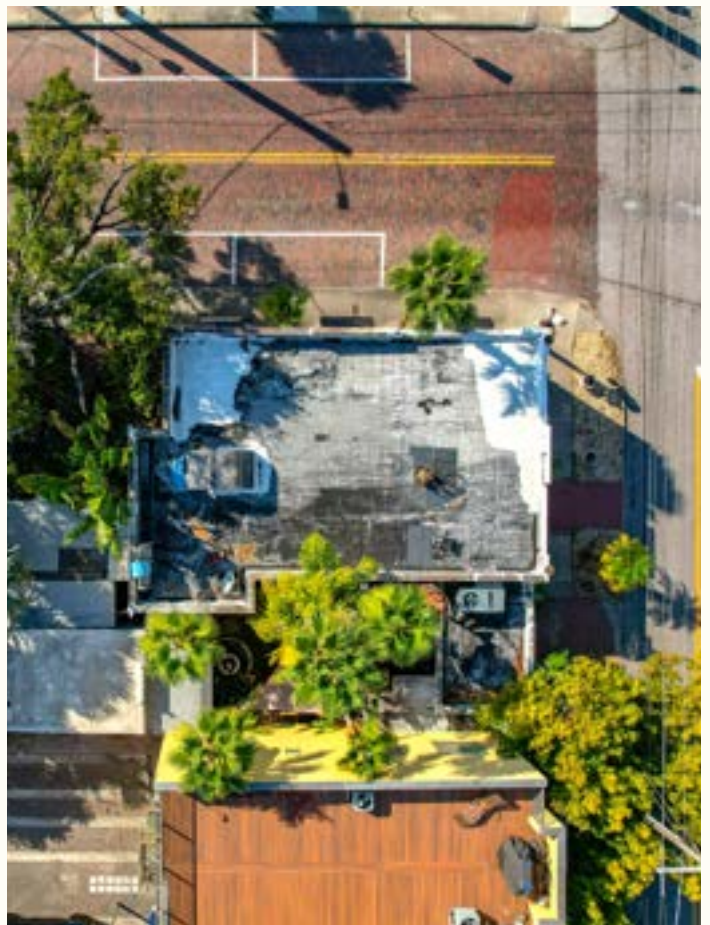
A place people notice.



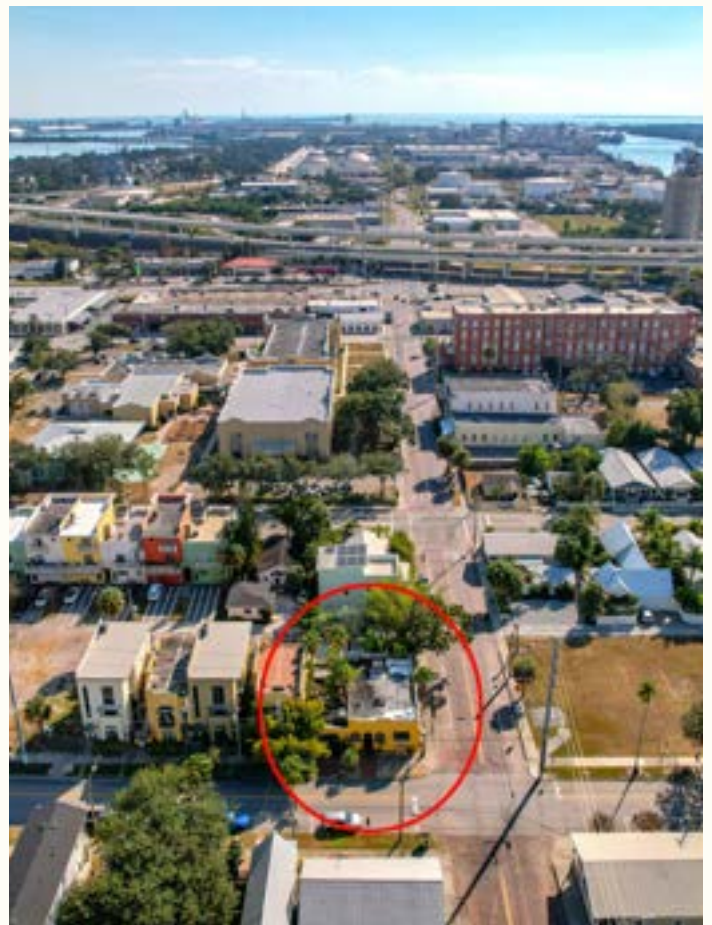




























































































# SCHLEICHER SELECT PROPERTIES

*THE RIGHT MOVE*

**Casa de LaLa | 1901 E 5th Ave**

2,081 SF | Office Building | Tampa, FL 33605 | \$925,000 (\$444.50/SF)



727-201-2277



diane@sspproperties.com