



WATERFORD
PARK



12301 LAKE UNDERHILL RD | ORLANDO, FLORIDA 32828

Retail & Office Suites For Lease

From 950 SF to 4,991 SF



Available Space at East Orlando's Best Office & Retail/Medical Location

A full amenity styled development located directly on the corner of Lake Underhill Rd and Alafaya Trail at the entrance of Waterford Lakes. Also serving Avalon Park, Stoneybrook, Eastwood and Oviedo. Close to 408 and 4 miles from UCF.

OFFERED BY:



GARRETT GLEITER
GARRETT@4ACRE.COM
407.539.4514

NICHOLAS FOURAKER
NICK@4ACRE.COM
407.601.1466



AVAILABLE SUITES

FROM 1,107 TO 4,991 SF



SECOND FLOOR

- Suite 201 4,991 SF Available 2-1-2025
- Suite 213 The Orlando Law Group
- Suite 215-219 Primary Cares of Central Florida
- Suite 221 First American Title
- Suite 223-27 Add Med Health
- Suite 225 Primary Care of Central Florida
- Suite 229 Keller Williams
- Suite 231 Meridian Consulting Engineers
- Suite 232 Keller Williams
- Suite 233-34 Atkins Global
- Suite 236 Visual Health
- Suite 237 Specified Sales Associates
- Suite 241-243 Dave Schmitt Engineering
- Suite 245 E. Orlando Chamber of Com.
- Suite 249 Therapy Essentials
- Suite 247-51 Gravitational Marketing
- Suite 253-255 Anchored Therapeutic Services
- Suite 254-256 22 Health
- Suite 257 Anchored Therapeutic Services
- Suite 258 Fairway Mortgage
- Suite 259 Pearl Time
- Suite 260 950 SF Available 3-1-2025
- Suite 261 The Thompson Agency
- Suite 263 Eminent Valuations
- Suite 265 Wander and Lust Jewelry
- Suite 267 Anchored Therapeutic Services

FIRST FLOOR

- Suite 101-103 Bonefish Grill
- Suite 104 Orlando Endontics
- Suite 105 Aesthetics Lounge
- Suite 106 Prime IV Hydration & Wellness
- Suite 107/108 Orlando Periodontics
- Suite 109/110 Be Yip: Eyecare Reimagined
- Suite 111 Keller Williams
- Suite 112 Fidelity Title
- Suite 113-116 Florida Radiology Imaging
- Suite 118 Mini ER
- Suite 121 1,796 SF Available
- Suite 122-123 Orange Theory Fitness
- Suite 125 Hand and Foot Spa
- Suite 127 Salon Lofts
- Suite 128-30 Just Leased

FEATURED
TENANTS



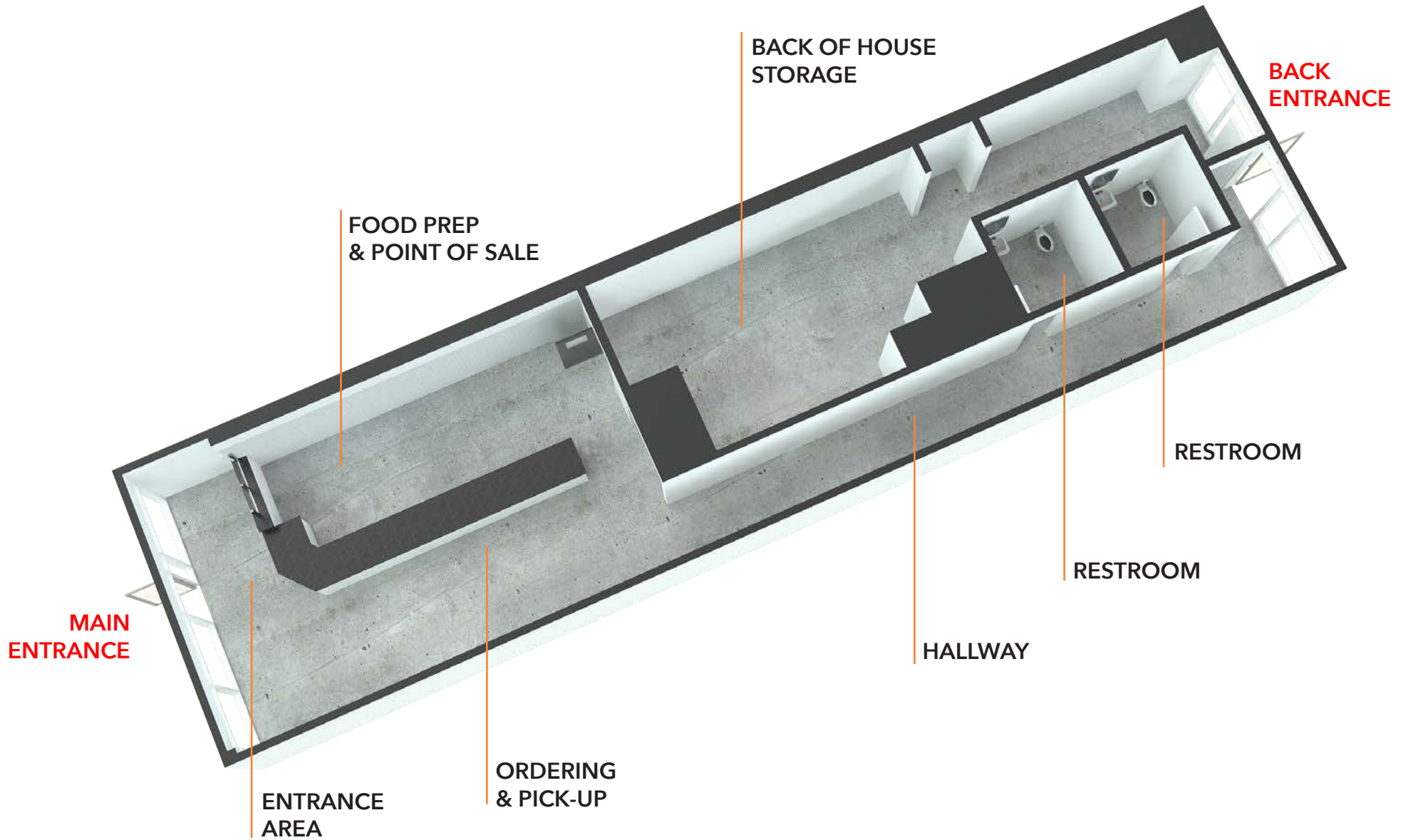
SUITE 121 LOCATION

1,796 SF



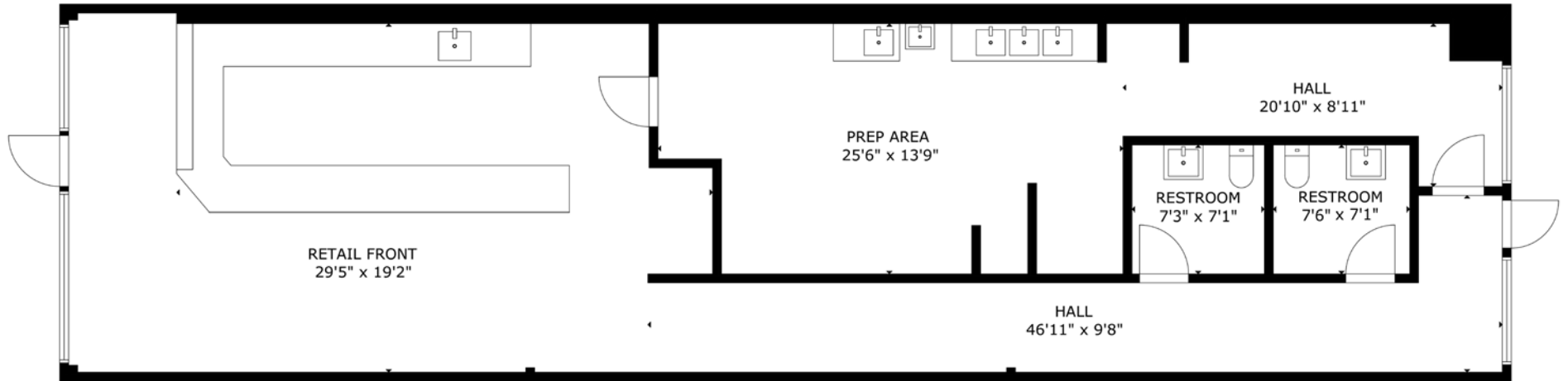
SUITE 121 LAYOUT

±1,796 SF



SUITE 121 FLOOR PLAN

1,796 SF

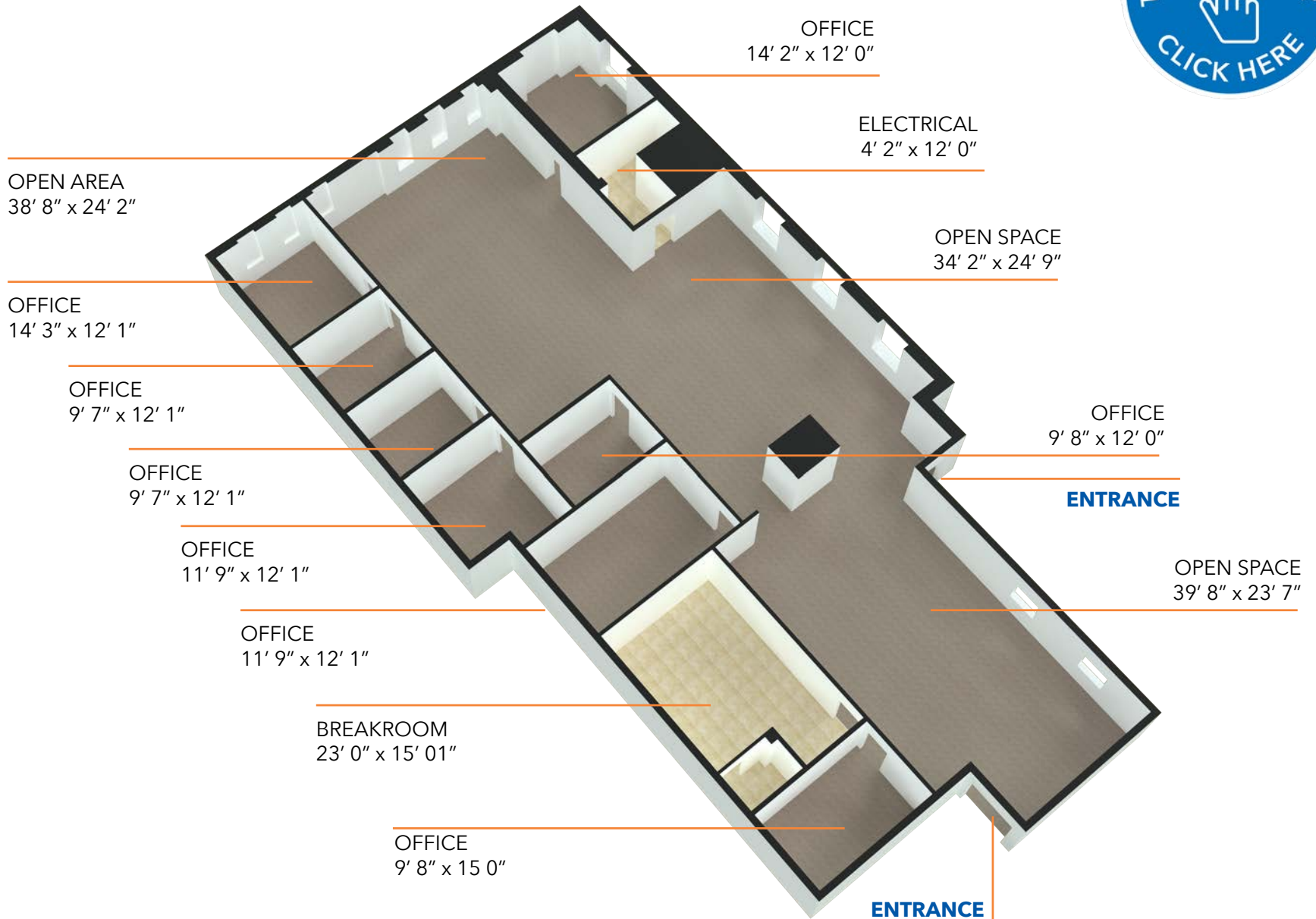


SUITE 121 INTERIORS | ±1,796 SF



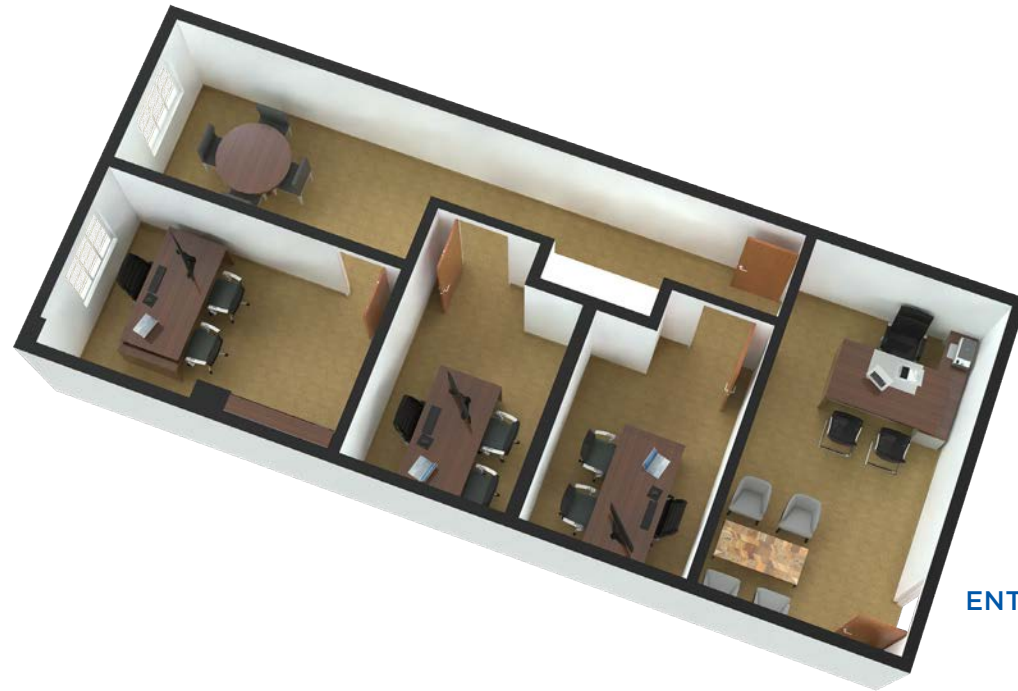
SUITE 201

2ND GEN OFFICE
±4,991

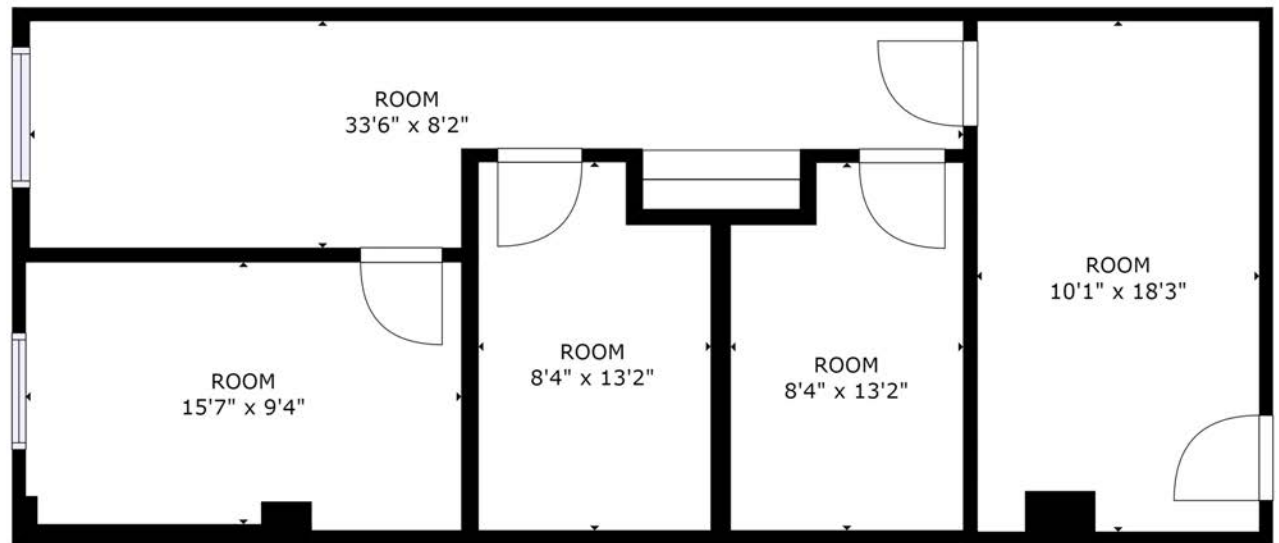


SUITE 260

2ND GEN OFFICE
±950 SF



ENTRANCE



NEARBY POINTS OF INTEREST

WATERFORD LAKES TOWN CENTER

STARBUCKS	TJ MAX
CALIFORNIA PIZZA KITCHEN	REGAL WATERFORD LAKES STADIUM 20
CHICK-FIL-A	OLD NAVY
TGI FRIDAYS	IN STYLE HAIR
DUFFY'S SPORTS GRILL	LONGHORN STEAKHOUSE
THE BRASS TAP	LA FITNESS
SMOKEY BONES	JO-ANN FABRIC
TARGET, TILLY'S	MASSAGE ENVY
BEST BUY	PIZZA HUT
WAHLBURGERS	PET SMART
SWEET BY HOLLY	MILLER'S ALE HOUSE

TRAFFIC COUNTS

ALAFAYA TRAIL
50,000 AADT

LAKE UNDERHILL RD
27,500 AADT

COMBINED
77,500 AADT





GARRETT GLEITER

GARRETT@4ACRE.COM

407.539.4514

NICHOLAS FOURAKER, CCIM

NICK@4ACRE.COM

407.601.1466



**WATERFORD
PARK**

4 Acre Commercial Real Estate (4 Acre) does not represent or warranty the accuracy of the information contained herein. Such information has been given to 4 Acre by the owner of the property or obtained from other sources deemed reliable. 4 Acre has no reason to doubt its accuracy, but does not guarantee it. The reviewer(s) of this document is encouraged to perform their own research for their own purposes to verify the dependability of the information being reviewed. All information should be verified by reviewer(s) prior to purchase or lease. Unless otherwise noted, the property is being offered as-is, where is, with all faults. This information represents the proprietary work product of 4 Acre Realty, LLC and may not be copied, reproduced, modified, distributed, published, transmitted, or otherwise disclosed without the express written consent of 4 Acre Realty, LLC.