

~17 ACRES

[CLICK HERE FOR VIRTUAL TOUR](#)

## Campbellsport Business Park Campbellsport, WI.

### Property Features

Welcome to Campbellsport Business Park, where opportunity meets affordability! This premier business park offers low-cost land, making it an ideal location for your next commercial venture. Key features include a well-maintained community retention pond and the benefits of being within a Tax Increment District (TID). To ensure a seamless development process, comprehensive land studies have been completed, including a Phase I Environmental Assessment and wetland delineation. Campbellsport Business Park provides a strategic and cost-effective foundation for your business growth.

PRICE	\$15,000 - \$19,000/ACRE
LOT SIZE	1 - 17 ACRES
ZONING	INDUSTRIAL
PARCEL NO.	V02-13-18-13-15-008-00; V02-13-18-13-16-002-00; V02-13-18-13-15-002-00

For more information:

[Dane Checolinski](#)

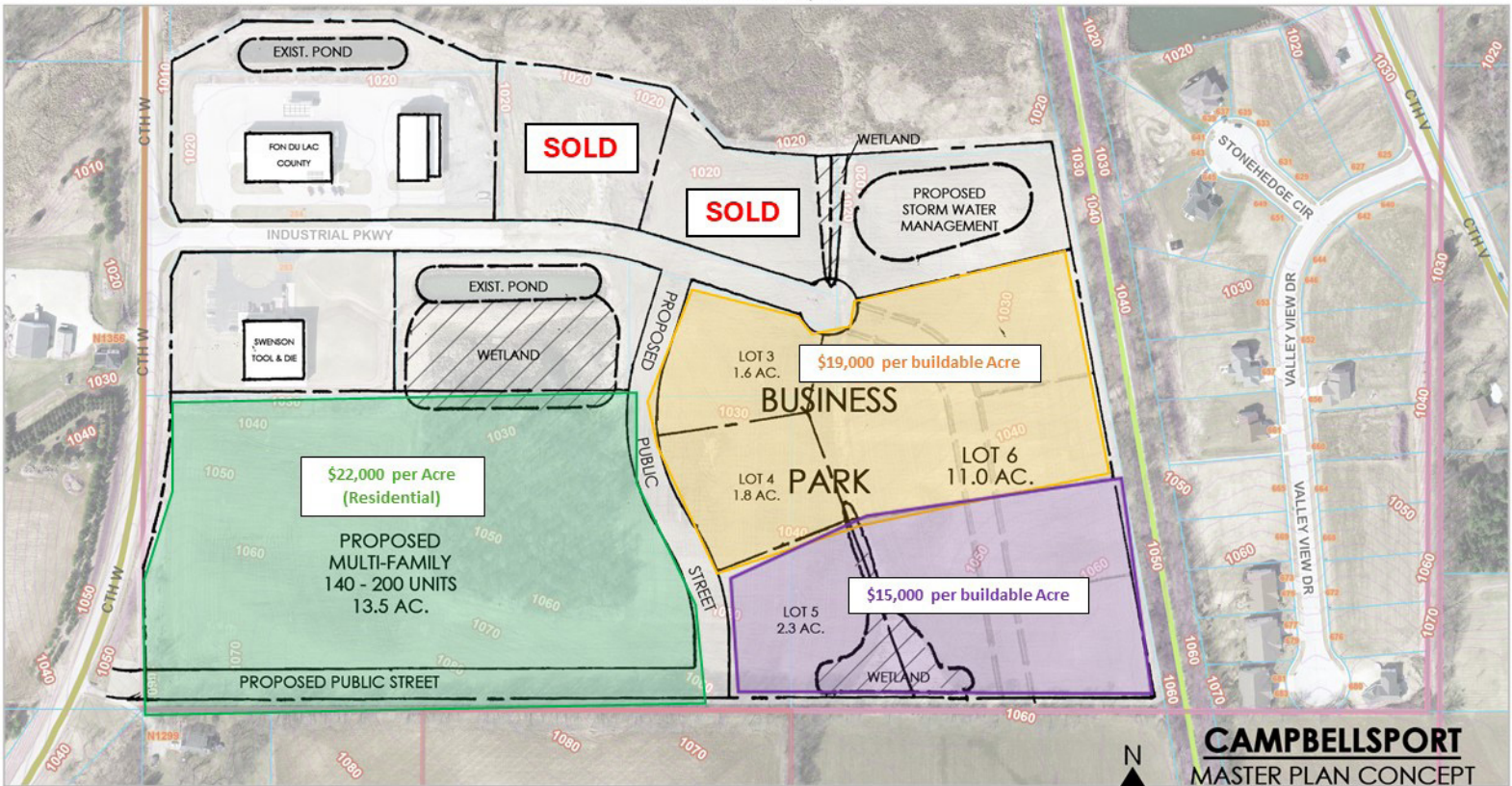
920.344.8732 • [danec@naipfefferle.com](mailto:danec@naipfefferle.com)

NO WARRANTY OR REPRESENTATION, EXPRESS OR IMPLIED, IS MADE AS TO THE ACCURACY OF THE INFORMATION CONTAINED HEREIN, AND THE SAME IS SUBMITTED SUBJECT TO ERRORS, OMISSIONS, CHANGE OF PRICE, RENTAL OR OTHER CONDITIONS, PRIOR SALE, LEASE OR FINANCING, OR WITHDRAWAL WITHOUT NOTICE, AND OF ANY SPECIAL LISTING CONDITIONS IMPOSED BY OUR PRINCIPALS NO WARRANTIES OR REPRESENTATIONS ARE MADE AS TO THE CONDITION OF THE PROPERTY OR ANY HAZARDS CONTAINED THEREIN ARE ANY TO BE IMPLIED.

3414 Mill Road  
Sheboygan, WI  
920.783.6330  
[naipfefferle.com](http://naipfefferle.com)

## Business Park Masterplan

Fond du Lac County, WI



**CAMPBELLSPORT**  
MASTER PLAN CONCEPT

4/4/23



Campbellsport Sewer



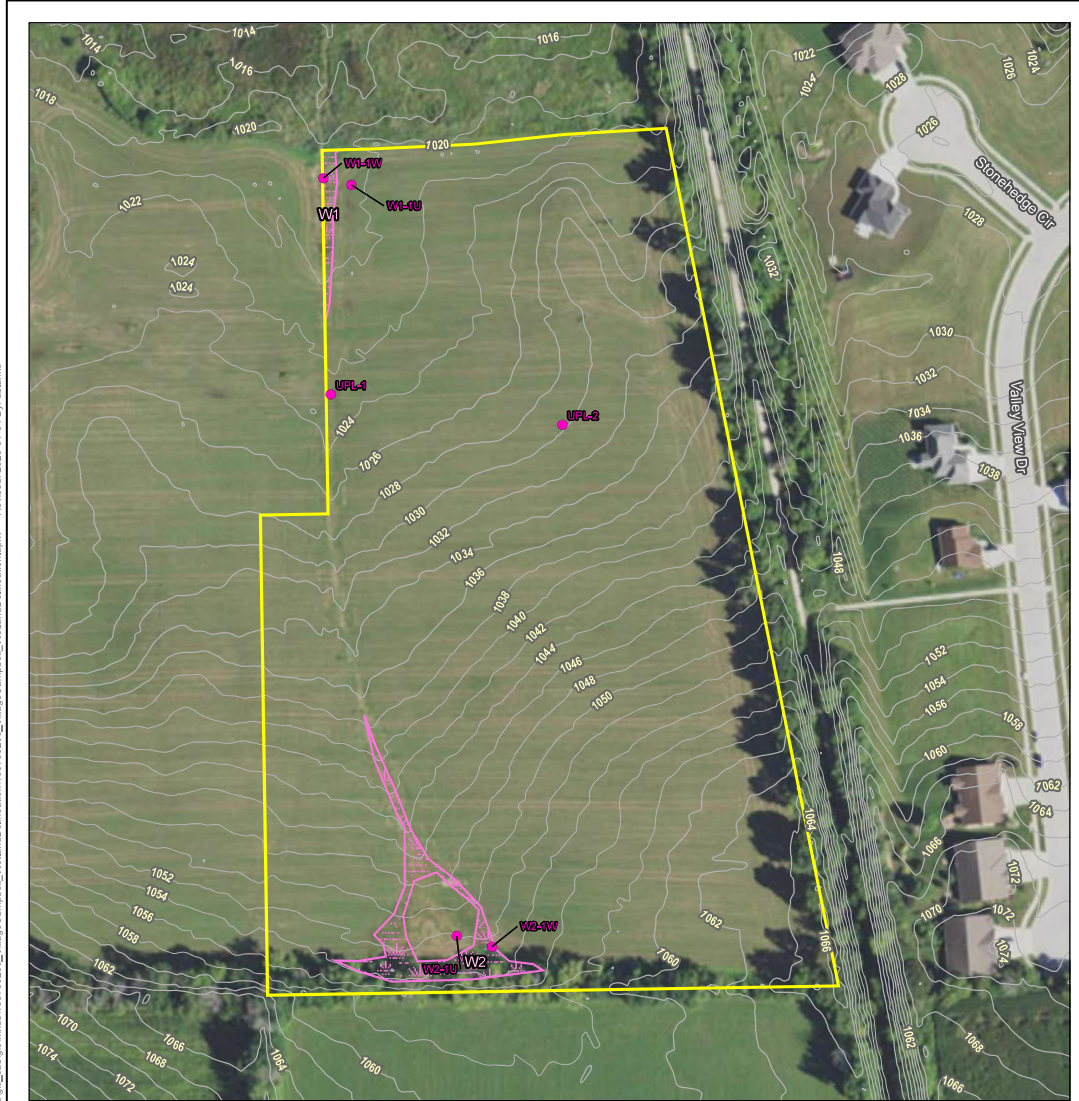
300ft

Campbellsport Water

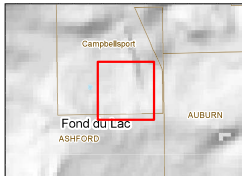


300ft

## Wetland Delineation Map

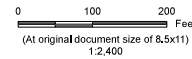


I:\workspace\workgroup\1937\Activ\19370228\01\_data\GIS\_campaign\mxd\19370228\_VillageCampbell\_WetlandDelineation.aprx Revised: 2023-01-04 By: dtinkis  
 I:\workspace\workgroup\1937\Activ\19370228\01\_data\GIS\_campaign\mxd\19370228\_VillageCampbell\_WetlandDelineation.aprx Revised: 2023-01-04 By: dtinkis



**Notes**  
 1. Coordinate System: NAD 1983 StatePlane Wisconsin South FIPS 4803 Feet  
 2. Data Sources: Stantec, Village of Campbellsport, WI, USGS, WisDOT, WNDR  
 3. Background: NAIP 2021

- Legend**
- Approximate Project Boundary
  - 2ft Contour Elevation
  - Sample Point
  - Field Delineated Wetland
  - ~ DNR 24k Hydrography
  - ~ Perennial Stream\*
  - ~ Intermittent Stream\*
  - Waterbody



Project Location: T13N, R18E, S13  
 Prepared by DBB on 2022-11-09  
 TR by JM on 2022-11-10  
 Village of Campbellsport, Fond du Lac Co., WI IR by SM on 2023-01-04

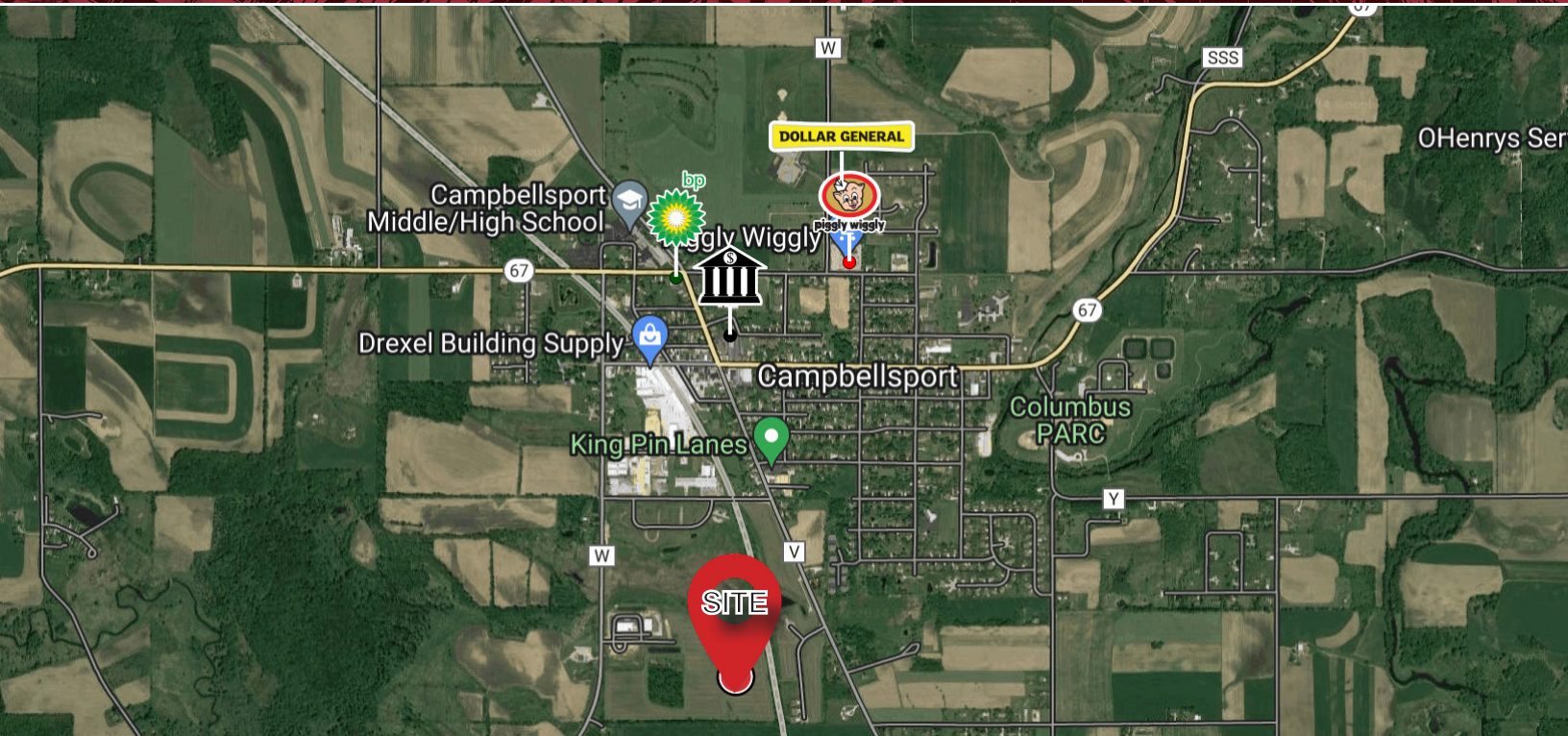
Client/Project: Village of Campbellsport  
 16-acre Parcel Project  
 Wetland Delineation  
 193709296

Figure No. **4**  
 Title  
**Field Collected Data**

\*No Features Within Data Frame

Page 1 of 1

Disclaimer: This document has been prepared based on information provided by others as cited in the Notes section. Stantec has not verified the accuracy and/or completeness of this information and shall not be responsible for any errors or omissions which may be incorporated herein as a result. Stantec assumes no responsibility for data supplied in electronic format, and the recipient accepts full responsibility for verifying the accuracy and completeness of the data.



### POPULATION



1 MILE:	2,000
3 MILES:	4,100
5 MILES:	6,752



### EMPLOYEES

1 MILE:	579
3 MILES:	777
5 MILES:	1,175

### AVERAGE INCOME



1 MILE:	\$96,168
3 MILES:	\$103,488
5 MILES:	\$112,215



### BUSINESSES

1 MILE:	67
3 MILES:	90
5 MILES:	132

### AVERAGE HOUSEHOLDS

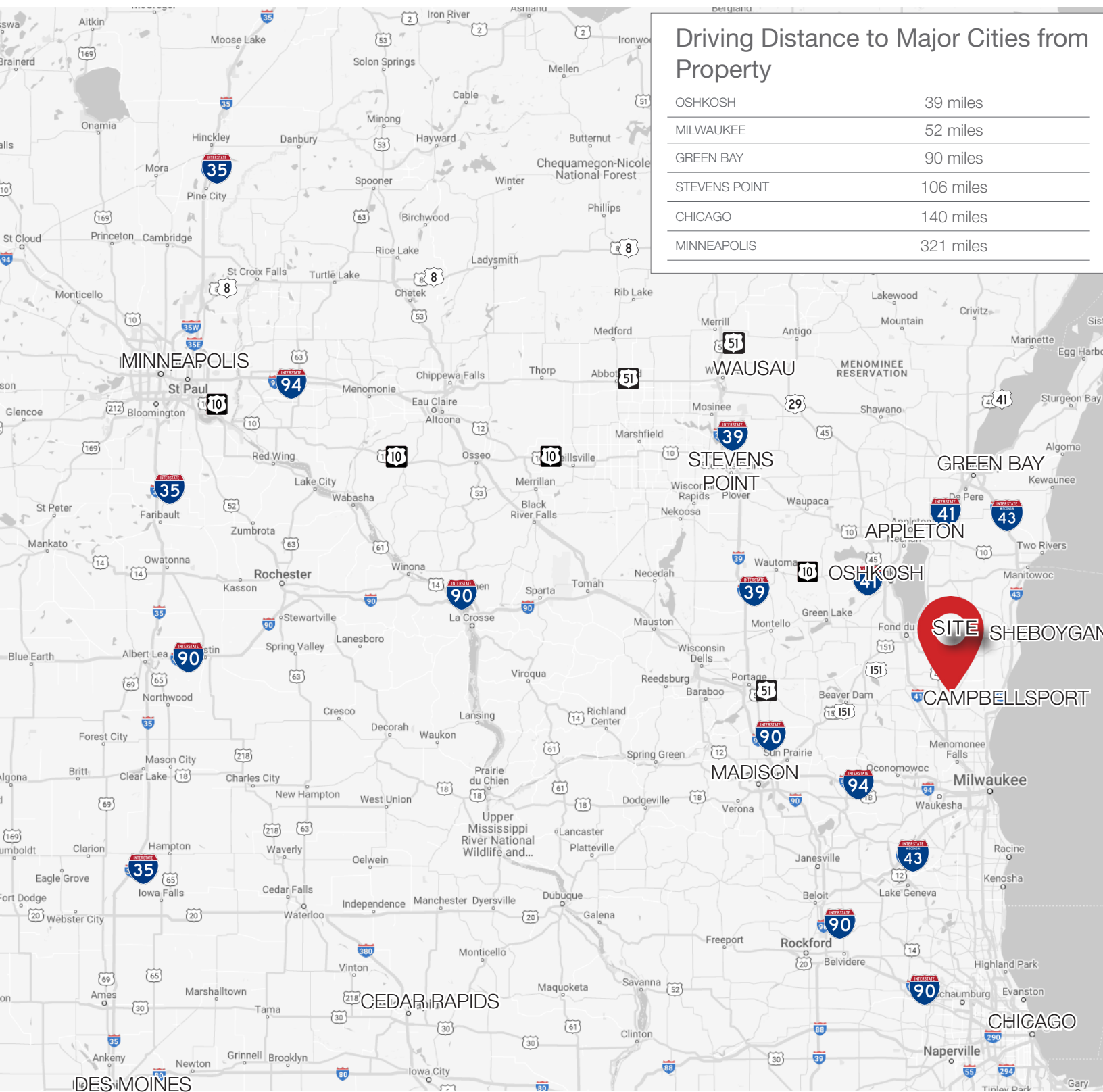


1 MILE:	837
3 MILES:	1,711
5 MILES:	2,788



### TRAFFIC COUNTS

COUNTY HWY W	377
HIGHWAY 67	773
COUNTY HWY V	1,142



## STATE OF WISCONSIN BROKER DISCLOSURE



Wisconsin law requires all real estate licensees to give the following information about brokerage services to prospective customers.

**Prior to negotiating on your behalf the Brokerage firm, or an agent associated with the firm, must provide you the following disclosure statement.**

### Disclosure to Customers

You are a customer of NAI Pfefferle (hereinafter Firm). The Firm is either an agent of another party in the transaction or a subagent of another firm that is the agent of another party in the transaction. A broker or a salesperson acting on behalf of the Firm may provide brokerage services to you. Whenever the Firm is providing brokerage services to you, the Firm and its brokers and salespersons (hereinafter Agents) owe you, the customer, the following duties:

- The duty to provide brokerage services to you fairly and honestly.
- The duty to exercise reasonable skill and care in providing brokerage services to you.
- The duty to provide you with accurate information about market conditions within a reasonable time if you request it, unless disclosure of the information is prohibited by law.
- The duty to disclose to you in writing certain Material Adverse Facts about a Property, unless disclosure of the information is prohibited by law.
- The duty to protect your confidentiality. Unless the law requires it, the Firm and its Agents will not disclose your confidential information or the confidential information of other parties.
- The duty to safeguard trust funds and other property held by the Firm or its Agents.
- The duty, when negotiating, to present contract proposals in an objective and unbiased manner and disclose the advantages and disadvantages of the proposals.

Please review this information carefully. An Agent of the Firm can answer your questions about brokerage services, but if you need legal advice, tax advice, or a professional home inspection, contact an attorney, tax advisor, or home inspector. This disclosure is required by section 452.135 of the Wisconsin statutes and is for information only. It is a plain-language summary of the duties owed to a customer under section 452.133(1) of the Wisconsin statutes.

### Confidentiality Notice to Customers

The Firm and its Agents will keep confidential any information given to the Firm or its Agents in confidence, or any information obtained by the Firm or its Agents that a reasonable person would want to be kept confidential, unless the information must be disclosed by law or you authorize the Firm to disclose particular information. The Firm and its Agents shall continue to keep the information confidential after the Firm is no longer providing brokerage services to you.

*No representation is made as to the legal validity of any provision or the adequacy of any provision in any specific transaction.*

The following information is required to be disclosed by law:

1. Material Adverse Facts, as defined in section 452.01(5g) of the Wisconsin Statutes (see definition below).
2. Any facts known by the Firm or its Agents that contradict any information included in a written inspection report on the property or real estate that is the subject of the transaction.

To ensure that the Firm and its Agents are aware of what specific information you consider confidential, you may list that information below or provide that information to the Firm or its Agents by other means. At a later time, you may also provide the Firm or its Agents with other information you consider to be confidential.

### CONFIDENTIAL INFORMATION

---

---

### NON-CONFIDENTIAL INFORMATION

(the following information may be disclosed to the Firm and its Agents)

---

---

*(Insert information you authorize to be disclosed, such as financial qualification information.)*

### Definition of Material Adverse Facts

A "Material Adverse Fact" is defined in Wis. Stat. 452.01(5g) as an Adverse Fact that a party indicates is of such significance, or that is generally recognized by a competent licensee as being of such significance to a reasonable party, that it affects or would affect the party's decision to enter into a contract or agreement concerning a transaction or affects or would affect the party's decision about the terms of such a contract or agreement.

An "Adverse Fact" is defined in Wis. Stat. 452.01(1e) as a condition or occurrence that a competent licensee generally recognizes will significantly and adversely affect the value of the property, significantly reduce the structural integrity of improvements to real estate, or present a significant health risk to occupants of the property; or information that indicates that a party to a transaction is not able to or does not intend to meet his or her obligations under a contract or agreement made concerning the transaction.

### Notice About Sex Offender Registry

You may obtain information about the sex offender registry and persons registered with the registry by contacting the Wisconsin Department of Corrections on the Internet at <http://www.doc.wi.gov> or by telephone at 608-240-5830.