

**31330 Schoolcraft Road  
Livonia, MI 48150**

**FOR SALE**

**±6,702 SF Suburban Office Available**



**For More Information**

**Austin Jeske**  
248.897.3778 direct  
ajeske@cresa.com

**Trevor Daniel**  
248.613.8237 direct  
tdaniel@cresa.com

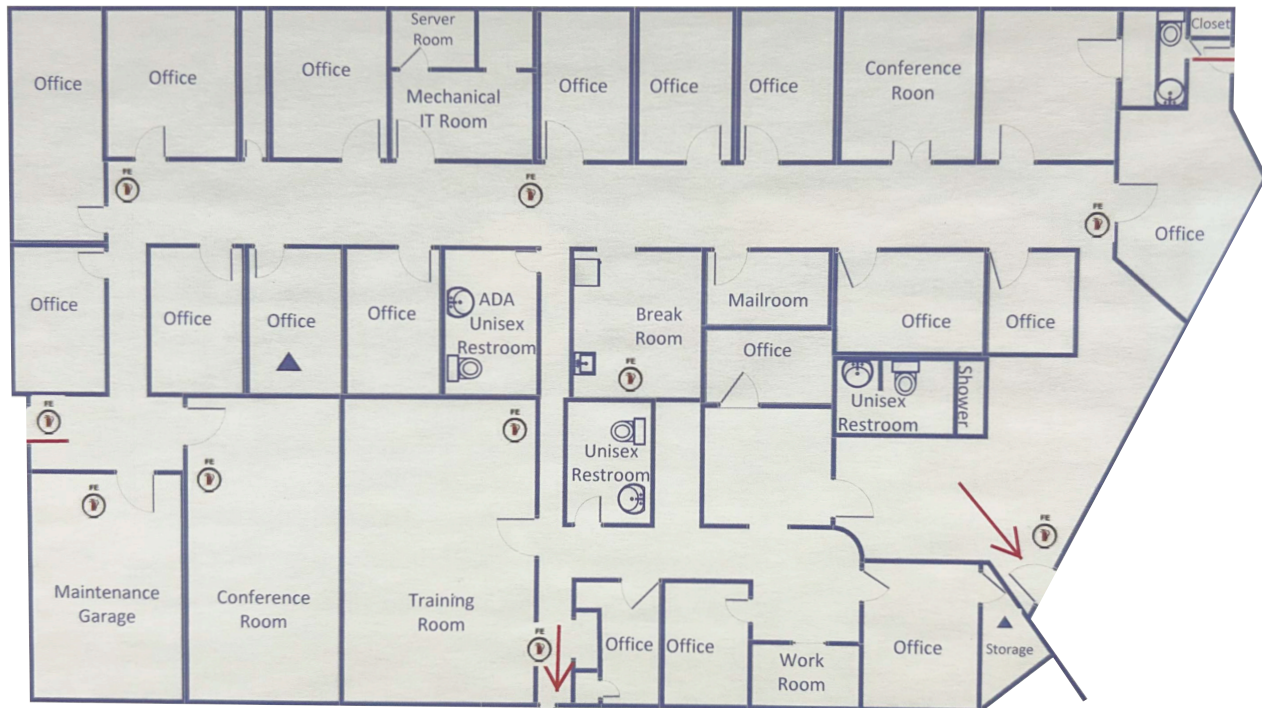
**Cresa Detroit**  
150 W Second Street, Suite 300S  
Royal Oak, MI 48067

Even though obtained from sources deemed reliable, no warranty or representation, express or implied, is made as to the accuracy of the information herein, and it is subject to errors, omissions, change of price, rental or other conditions, withdrawal without notice, and to any special listing conditions imposed by our principals.



**31330 Schoolcraft Road  
Livonia, MI 48150**

**FOR SALE**



**BUILDING INFORMATION**

- ±6,702 SF on ±0.48 Acre Lot
- Submarket: I-275 Corridor
- Sale Price: \$525,000
- 2-Star Suburban Office
- Year Built: 1978
- Construction: Masonry
- Parking Ratio: 6.88/1000
- Parking: 33 Surface Spaces

**±6,702 SF on ±0.48 Acres    Sale Price: \$525,000**

**For More Information**

**Austin Jeske**  
248.897.3778 direct  
ajeske@cresa.com

**Trevor Daniel**  
248.613.8237 direct  
tdaniel@cresa.com

**Cresa Detroit**  
150 W Second Street, Suite 300S  
Royal Oak, MI 48067

Even though obtained from sources deemed reliable, no warranty or representation, express or implied, is made as to the accuracy of the information herein, and it is subject to errors, omissions, change of price, rental or other conditions, withdrawal without notice, and to any special listing conditions imposed by our principals.





**31330 Schoolcraft Road  
Livonia, MI 48150**

**FOR SALE**



**For More Information**

**Austin Jeske**  
248.897.3778 direct  
ajeske@cresa.com

**Trevor Daniel**  
248.613.8237 direct  
tdaniel@cresa.com

**Cresa Detroit**  
150 W Second Street, Suite 300S  
Royal Oak, MI 48067

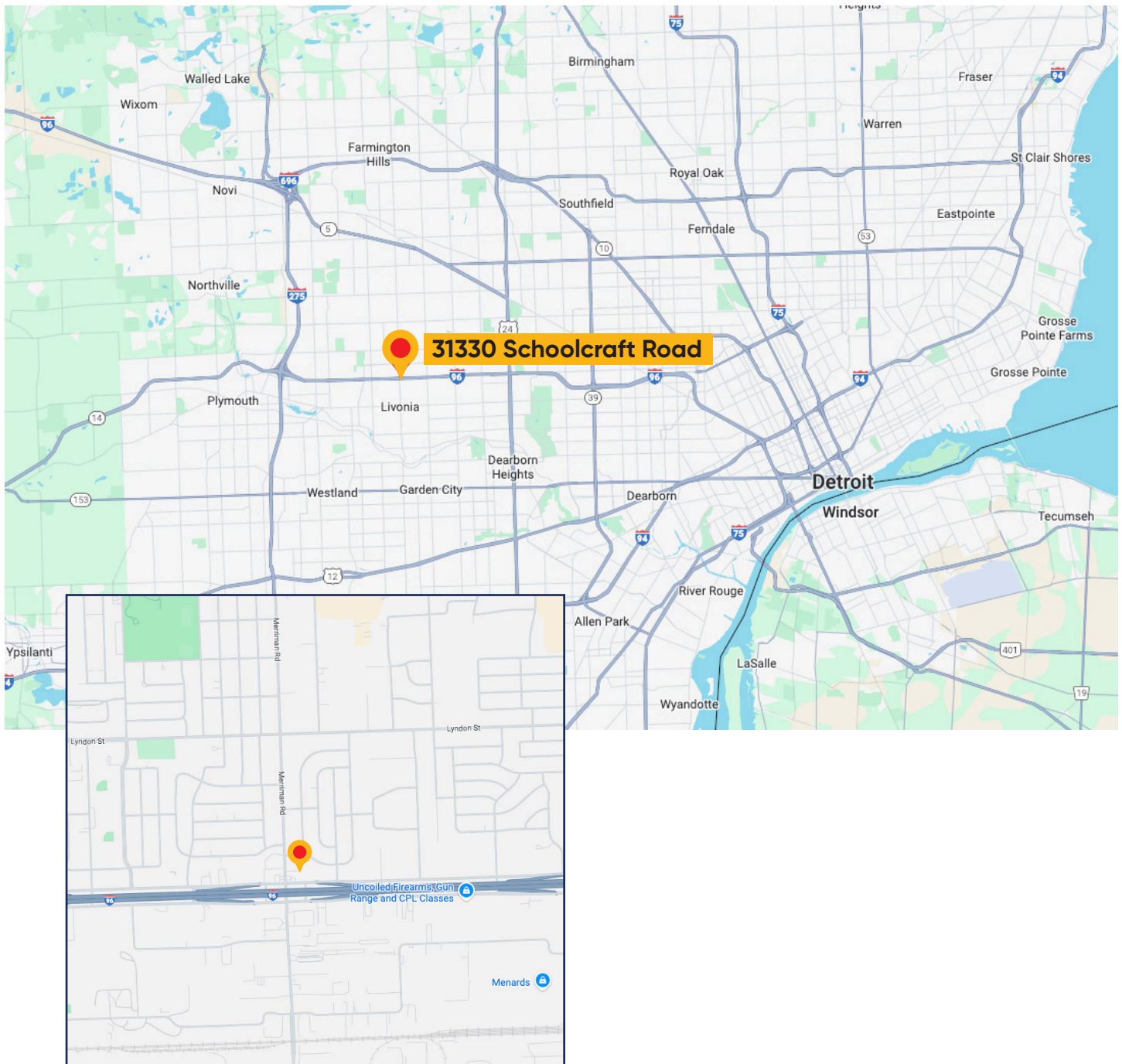
Even though obtained from sources deemed reliable, no warranty or representation, express or implied, is made as to the accuracy of the information herein, and it is subject to errors, omissions, change of price, rental or other conditions, withdrawal without notice, and to any special listing conditions imposed by our principals.

**cresa** 



**31330 Schoolcraft Road  
Livonia, MI 48150**

**FOR SALE**



**For More Information**

**Austin Jeske**  
248.897.3778 direct  
ajeske@cresa.com

**Trevor Daniel**  
248.613.8237 direct  
tdaniel@cresa.com

**Cresa Detroit**  
150 W Second Street, Suite 300S  
Royal Oak, MI 48067

Even though obtained from sources deemed reliable, no warranty or representation, express or implied, is made as to the accuracy of the information herein, and it is subject to errors, omissions, change of price, rental or other conditions, withdrawal without notice, and to any special listing conditions imposed by our principals.

**cresa** 