

For Sale

Suitable for Retail - Office - Medical

0.67 Acres



Development Opportunity J6 Business Office / Medical / Retail

1695-1697 Route 25, Ridge, New York 11961

Property Description:

SELLER MOTIVATED! Level .672 acre lot on Middle Country Road / Rt. 25
Located across the street from the US Post Office at Maple Ave. & Rt 25
Approved site plan for Office/Retail. Will build to suit.

Site Details:

SCTM #:	0200-351.00-01.00-003.000
2024-25 RE Taxes:	\$ 2,240.89
Frontage:	96 Feet on Middle Country Rd., NYS Rt. 25 w/curb cut
Acres/SF/Zoning:	.67 / 29,185.2 SF / J 6 (MSBD) Main St. Business Dist.
Site Plans:	Pre-approved site plan for 3,200SF Office / Wet Retail
Asking Price:	\$499,000.00

For more information

Marian Campi-Conde

O: 631 761 9628
mconde@nailongisland.com

Michael Corsello

O: 631 761 9627
mcorsello@nailongisland.com

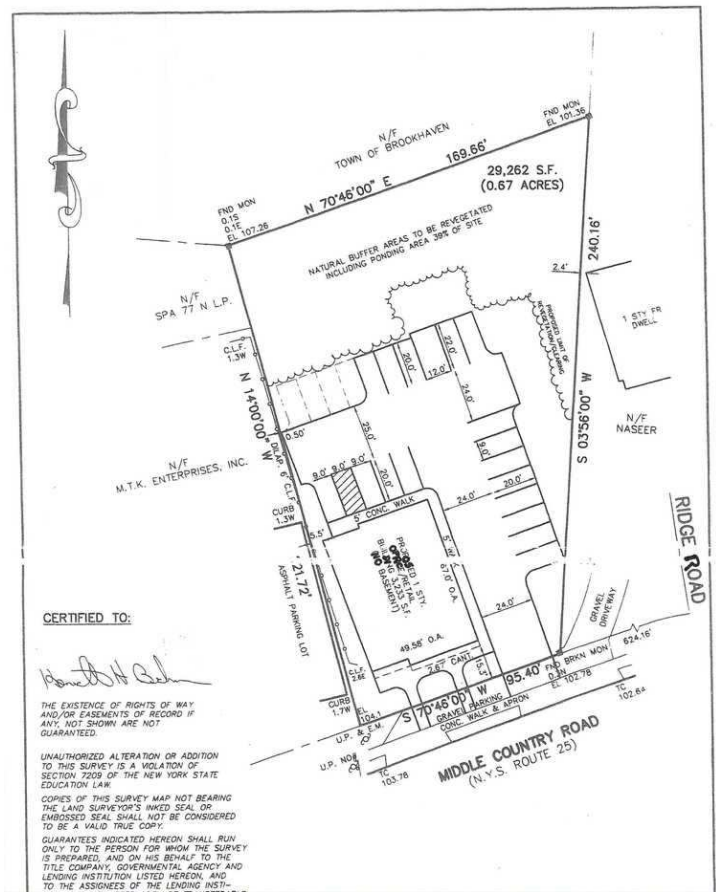
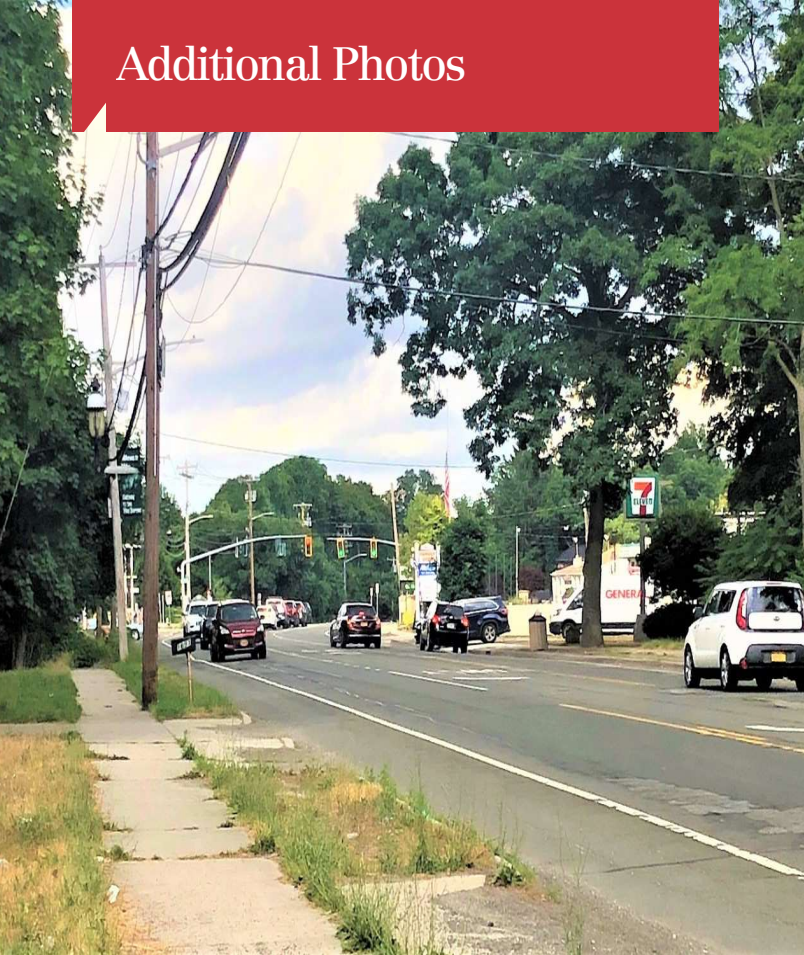


We obtained the information above from sources we believe to be reliable. However, we have not verified its accuracy and make no guarantee, warranty or representation about it. It is submitted subject to the possibility of errors, omissions, change of price, rental or other conditions, prior sale, lease or financing, or withdrawal without notice. We include projections, opinions, assumptions or estimates for example only, and they may not represent current or future performance of the property. You and your tax and legal advisors should conduct your own investigation of the property and transaction.

1601 Veterans Memorial Highway
Islandia, NY 11749
631 232 4400 tel
www.nailongisland.com



Additional Photos



For Sale

Suitable for Retail - Office - Medical

0.67 Acres

