

INDUSTRIAL PARK FOR LEASE

# 800 S Wilson Ave

Dunn, NC 28334



*for more information*

COREY CROEGAERT

Commercial Broker and Investment Specialist

O: 910.987.2579

C: 910.987.2579

[corey.c@grantmurrayre.com](mailto:corey.c@grantmurrayre.com)



Grant - Murray  
REAL ESTATE, LLC

COMMERCIAL AND INVESTMENT BROKERAGE

150 N. McPherson Church Rd | Fayetteville, NC 28303 | [www.grantmurrayre.com](http://www.grantmurrayre.com)



# PROPERTY OVERVIEW

<b>Available SF:</b>	7,000 - 69,746 SF
<b>Lease Rate:</b>	\$3.00 /SF
<b>Lot Size:</b>	4.18 Acres
<b>Zoning:</b>	I-10

## property description

Grant-Murray Real Estate is pleased to present an exceptional industrial leasing opportunity at 800 S Wilson Road in Dunn, North Carolina. Situated on a fully fenced  $\pm 4.18$ -acre parcel, this versatile property features four industrial buildings totaling  $\pm 69,746$  square feet. Buildings can be leased together or individually to accommodate a wide range of industrial, distribution, or contractor uses.

Available structures include a  $\pm 52,248$  SF Warehouse, a  $\pm 7,500$  SF warehouse, a  $\pm 5,998$  SF warehouse, and two  $\pm 2000$  SF Buildings suitable for manufacturing, logistics, or high-volume storage.. The property is zoned industrial and includes generous outdoor yard space for vehicle or material storage, laydown, or equipment staging.

This site is strategically located just minutes from I-95 and US Highway 421, offering direct connectivity to Raleigh, Fayetteville, Wilmington, and the broader I-40 and I-95 corridors. Dunn serves as a strategic midpoint between the Research Triangle and southeastern North Carolina, with easy access to ports, highways, and workforce hubs. The area is home to a range of industrial users, distributors, and service-based businesses drawn by favorable logistics and affordability.

800 S Wilson Ave  
DUNN, NC 28334

ADDITIONAL PHOTOS



*for more information*

COREY CROEGAERT

Commercial Broker and Investment Specialist

O: 910.987.2579

C: 910.987.2579

corey.c@grantmurrayre.com

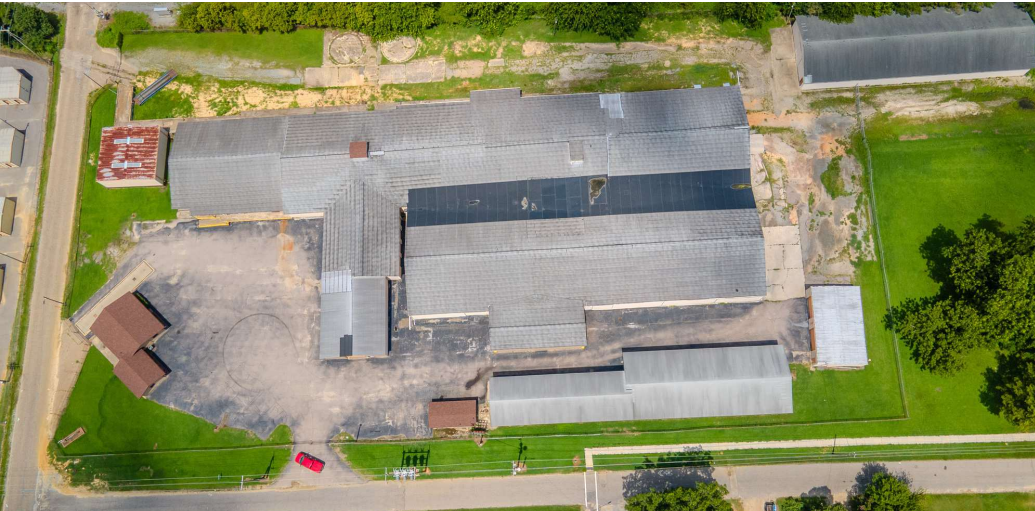


Grant - Murray  
REAL ESTATE, LLC  
COMMERCIAL AND INVESTMENT BROKERAGE

150 N. McPherson Church Rd | Fayetteville, NC 28303 | [www.grantmurrayre.com](http://www.grantmurrayre.com)

800 S Wilson Ave  
DUNN, NC 28334

ADDITIONAL PHOTOS



*for more information*

COREY CROEGAERT

Commercial Broker and Investment Specialist

O: 910.987.2579

C: 910.987.2579

corey.c@grantmurrayre.com



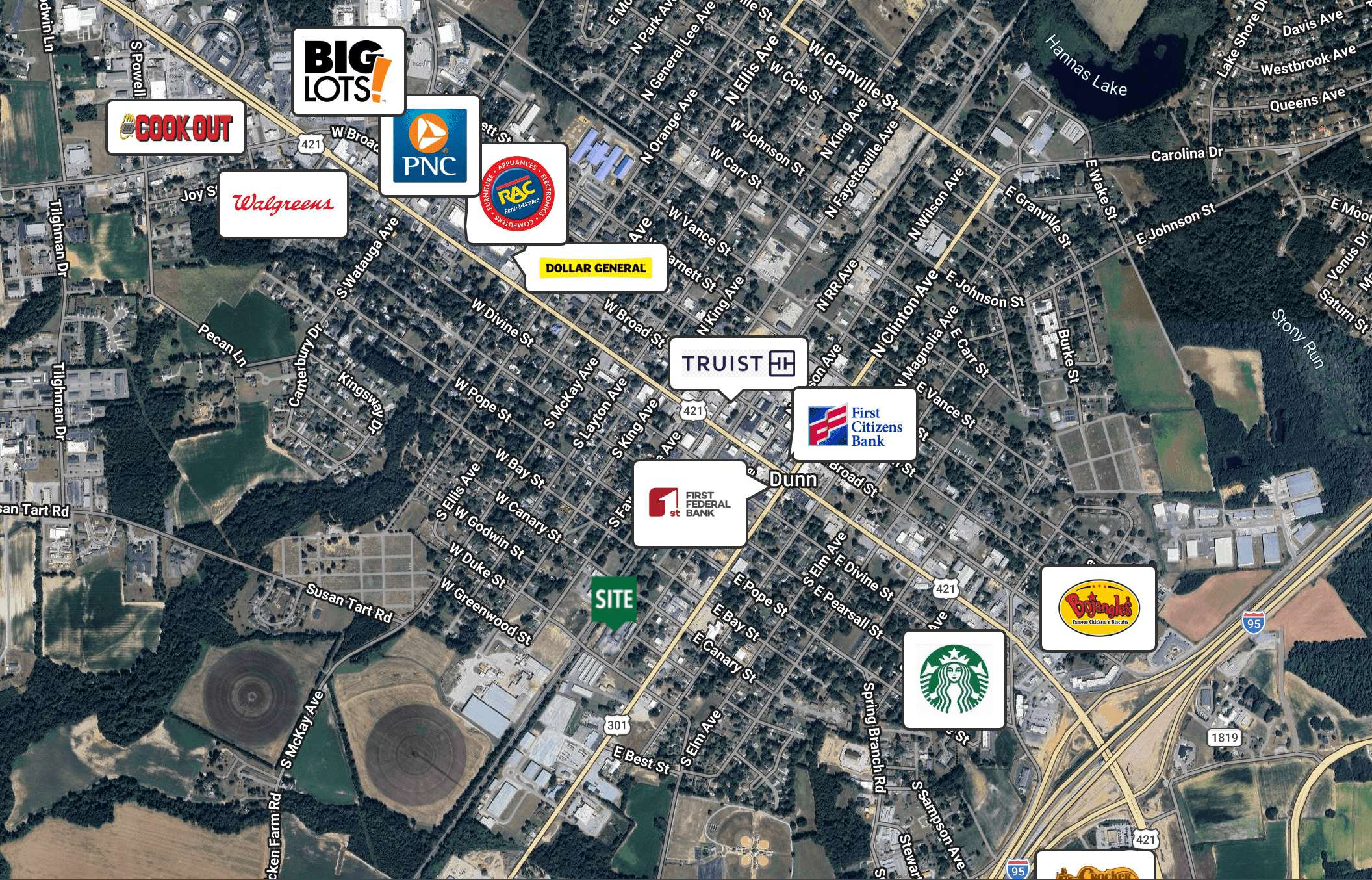
Grant - Murray

REAL ESTATE, LLC

COMMERCIAL AND INVESTMENT BROKERAGE

150 N. McPherson Church Rd | Fayetteville, NC 28303 | [www.grantmurrayre.com](http://www.grantmurrayre.com)





for more information

COREY CROEGAERT  
 Commercial Broker and Investment Specialist  
 O: 910.987.2579  
 C: 910.987.2579  
 corey.c@grantmurrayre.com



**Grant Murray**  
 REAL ESTATE, LLC  
 COMMERCIAL AND INVESTMENT BROKERAGE

150 N. McPherson Church Rd | Fayetteville, NC 28303 | [www.grantmurrayre.com](http://www.grantmurrayre.com)

Maxar Technologies