



RANDALL MEDICAL BUILDING

1710 N. Randall Rd. Elgin, IL

AVAILABLE SPACES

FIRST FLOOR

Suite 100 - 5,291 RSF

Suite 170 - 1,786 RSF

SECOND FLOOR

Suite 230 - 2,507 RSF

THIRD FLOOR

Suite 340 -1,433 RSF

Suite 370 -2,645 RSF

Suite 380 -2,645 RSF

*Suite 340,360,370,380 are contiguous for up to
11,154 RSF*

PROMINENT MEDICAL SPACES AVAILABLE

NEWLY
ADDED

Located on Randall Road, in close proximity to Advocate Sherman Hospital, the Randall Medical Building is now welcoming medical and dental office tenants. This beautifully maintained building offers ample parking at ratio of 5/1000, generous construction allowances, and a professional management team to take care of your practice. Set up a showing today!

WAVELAND
PROPERTY GROUP

PROPERTY MANAGEMENT & LEASING

Conner Stout

cstout@wavelandprop.com

630-230-1224

Kyle Arnold

karnold@wavelandprop.com

630-230-1225



PHYSICIANS REALTY TRUST

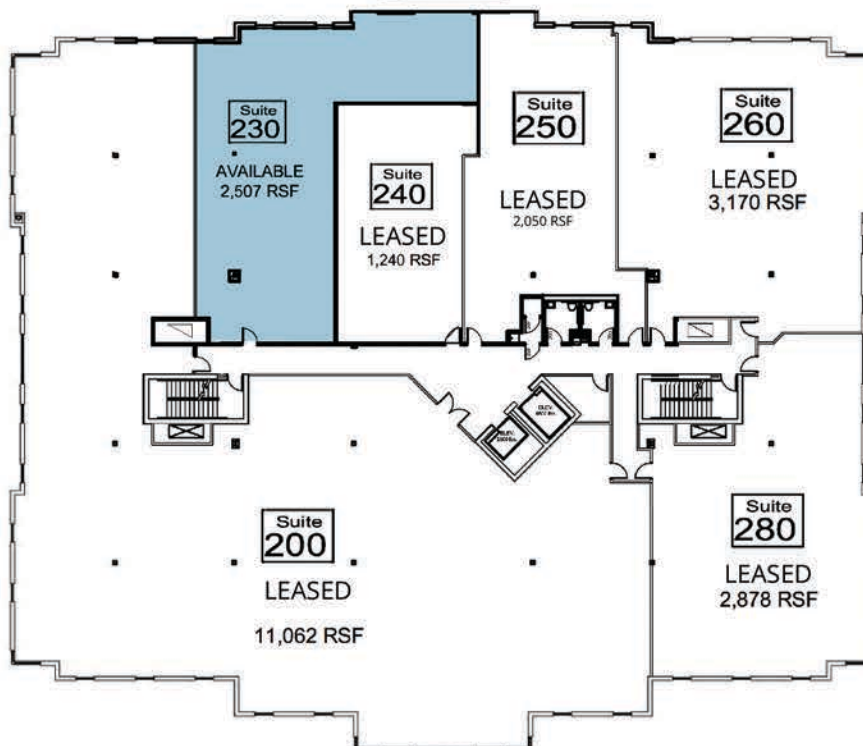
AVAILABLE SPACES

1710 NORTH RANDALL ELGIN, IL

FIRST FLOOR



SECOND FLOOR



PHYSICIANS REALTY TRUST

WAVELAND
PROPERTY GROUP

AVAILABLE SPACES (CONT.)

1710 NORTH RANDALL ELGIN, IL

THIRD FLOOR

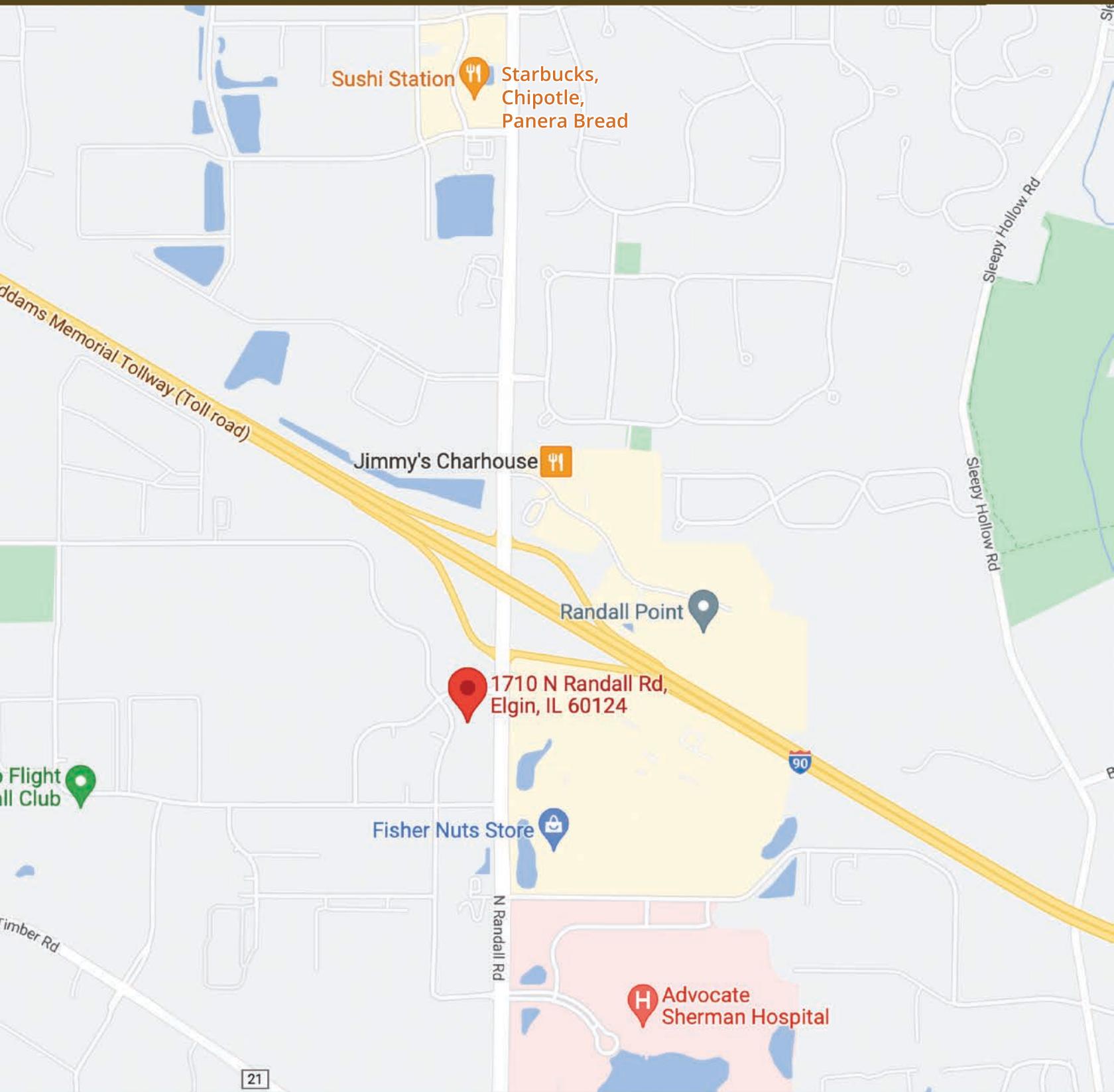


PHYSICIANS REALTY TRUST

WAVELAND
PROPERTY GROUP

HIGHLIGHTS

- ADVOCATE SHERMAN HOSPITAL IS LOCATED JUST SOUTH OF THE BUILDING
- CLOSE PROXIMITY TO A NUMBER OF DINING OPTIONS
- EASY ACCESS TO INTERSTATE 90



PHYSICIANS REALTY TRUST

WAVELAND
PROPERTY GROUP