

**CAST IRON
OFFICE BUILDING**



SCAN HERE!



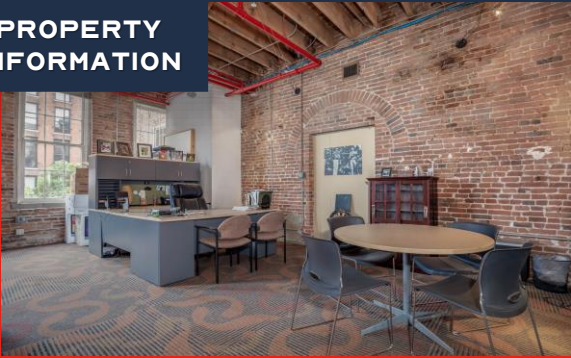
CALEB ANTHONIS

Phone: 314.647.6611 ext. 126
Caleb@ManorRealEstate.com

**712-14 NORTH 2ND STREET
ST. LOUIS, MO 63102
1,500-4,800 S.F | \$12.00/S.F. M.G.**

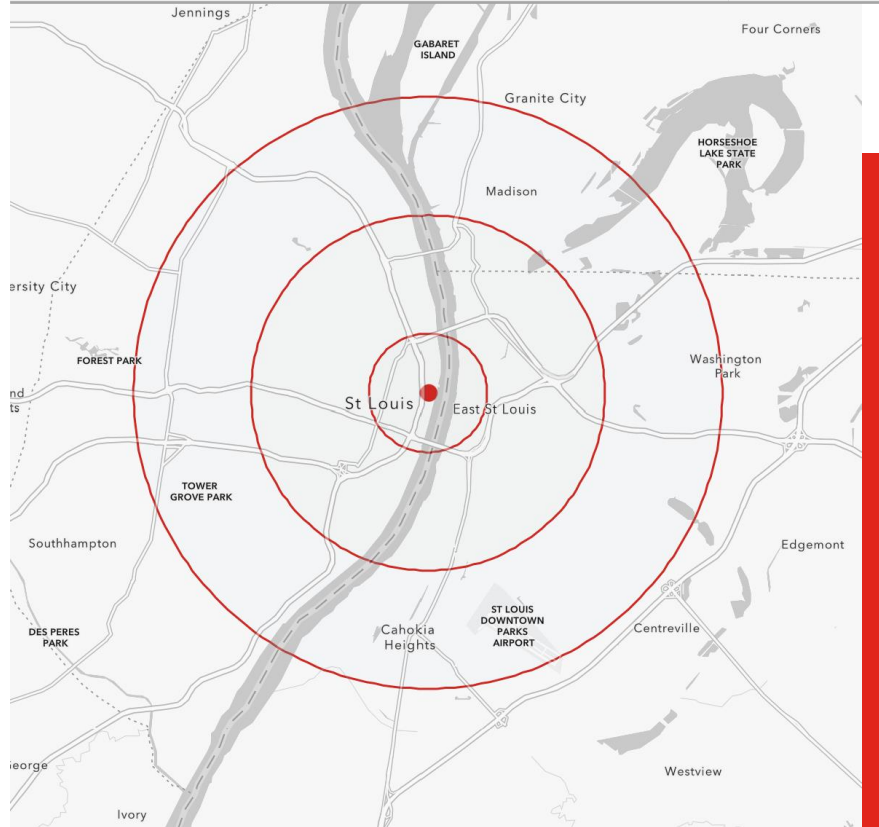
FOR LEASE

PROPERTY INFORMATION



- **BUILDING BUILT IN 1874 AND RENOVATED IN 1990**
- **TURN-KEY READY OFFICE SUITES AND UPON REQUEST CAN BE FULLY FURNISHED**
- **ELEVATOR-SERVED BUILDING AND ON-SITE PROPERTY MANAGEMENT**
- **MODERN LOFT-STYLE RENOVATIONS WITH CHARTER FIBER AVAILABLE THROUGHOUT THE BUILDING**
- **HISTORICALLY SIGNIFICANT BUILDING IN THE HEART OF LACLEDE'S LANDING**
- **CONVENIENT ACCESS TO I-44, I-55, AND I-70, MARTIN LUTHER KING BRIDGE, AND EADS BRIDGE**

DEMOGRAPHICS	1 MILE	3 MILES	5 MILES
POPULATION	10,391	63,106	191,455
HOUSEHOLDS	6,135	30,739	90,778
AVERAGE HH INCOME	\$89,306	\$68,401	\$69,257



SCAN HERE!



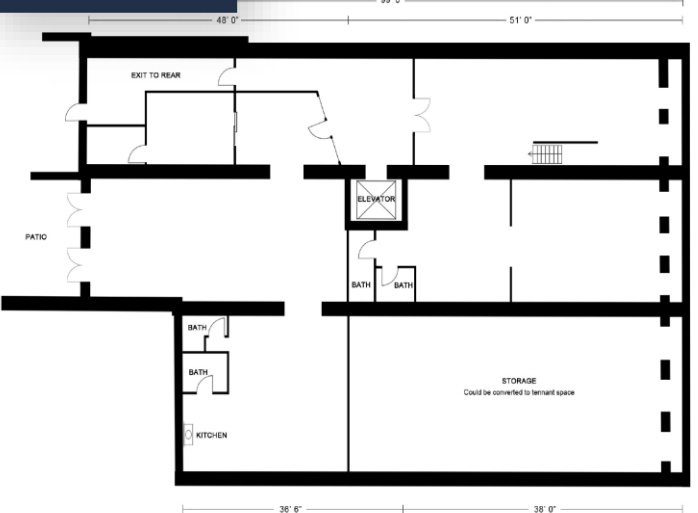
CALEB ANTHONIS

Phone: 314.647.6611 ext. 126
 Caleb@ManorRealEstate.com

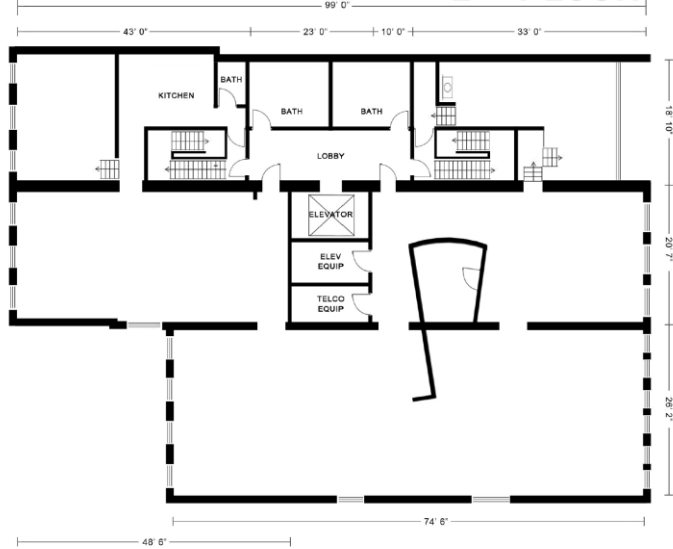
**712-14 NORTH 2ND STREET
 ST. LOUIS, MO 63102
 1,500-4,800 S.F | \$12.00/S.F. M.G.**

SITE PLAN

BASEMENT



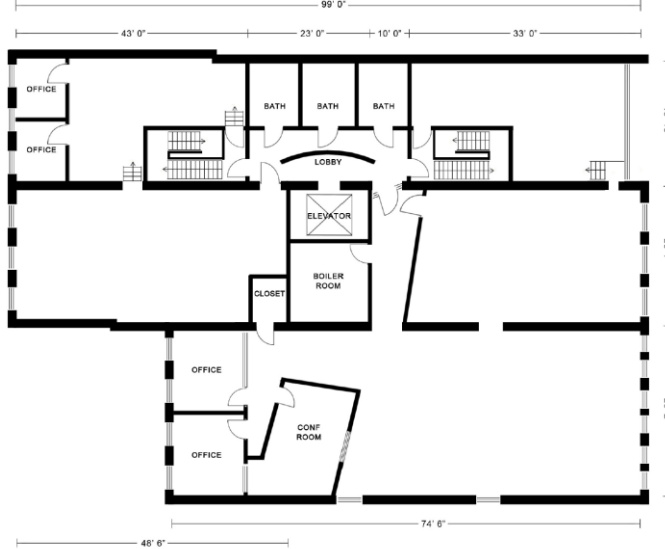
2ND FLOOR



1ST FLOOR



3RD FLOOR



CAST IRON BUILDING

RETAIL SPACE

SUITE	S.F.	STATUS
1 ST FLOOR	1,500	AVAILABLE

OFFICE SPACE

SUITE	S.F.	STATUS
BASEMENT	1,964	LEASED
1 ST FLOOR	3,257	AVAILABLE
2 ND FLOOR	4,800	AVAILABLE
3 RD FLOOR	1,900	AVAILABLE

SCAN HERE!

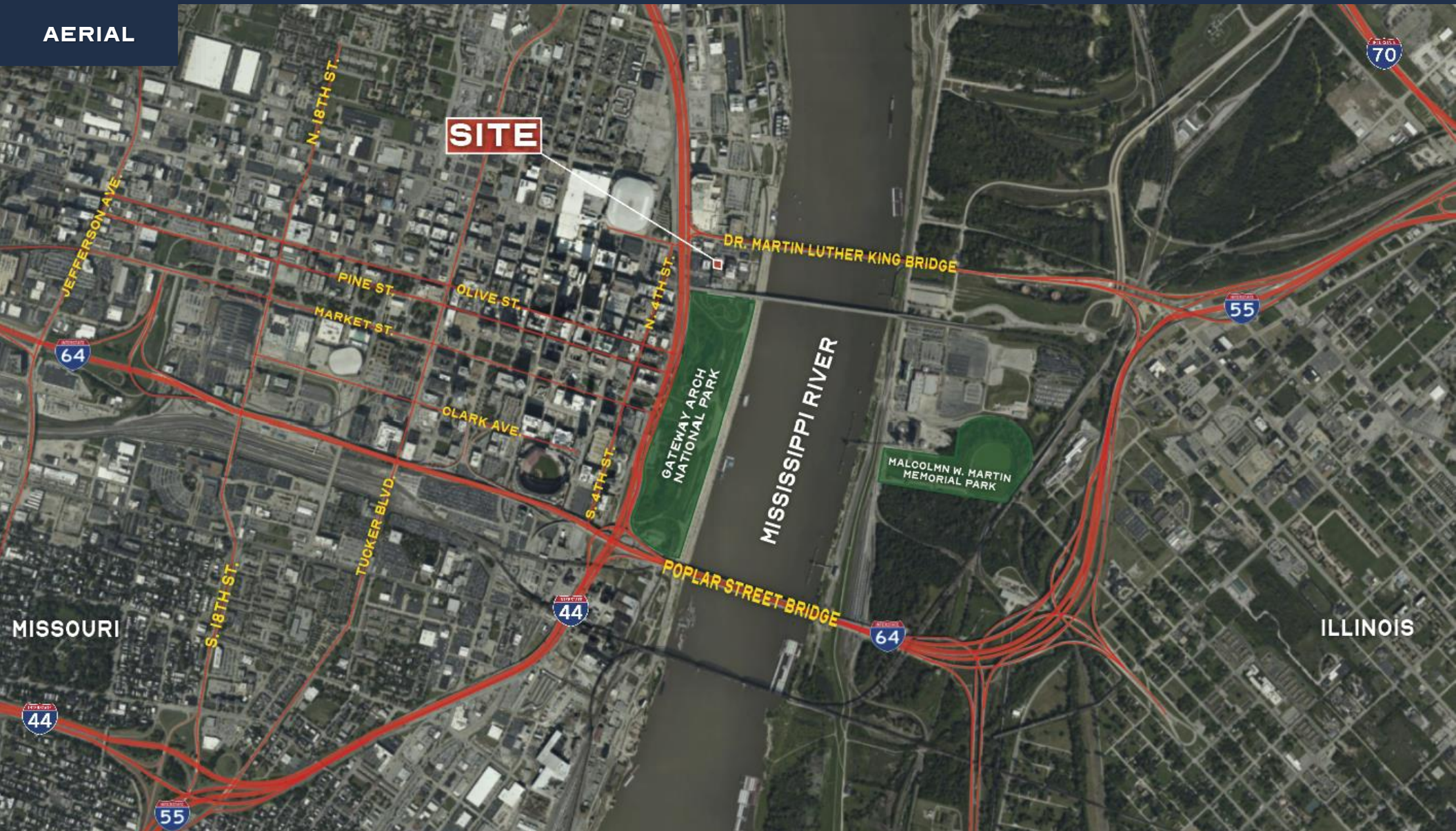


CALEB ANTHONIS

Phone: 314.647.6611 ext. 126
 Caleb@ManorRealEstate.com

712-14 NORTH 2ND STREET
 ST. LOUIS, MO 63102
 1,500-4,800 S.F | \$12.00/S.F. M.G.

AERIAL



SCAN HERE!



CALEB ANTHONIS

Phone: 314.647.6611 ext. 126
Caleb@ManorRealEstate.com

**712-14 NORTH 2ND STREET
ST. LOUIS, MO 63102
1,500-4,800 S.F | \$12.00/S.F. M.G.**