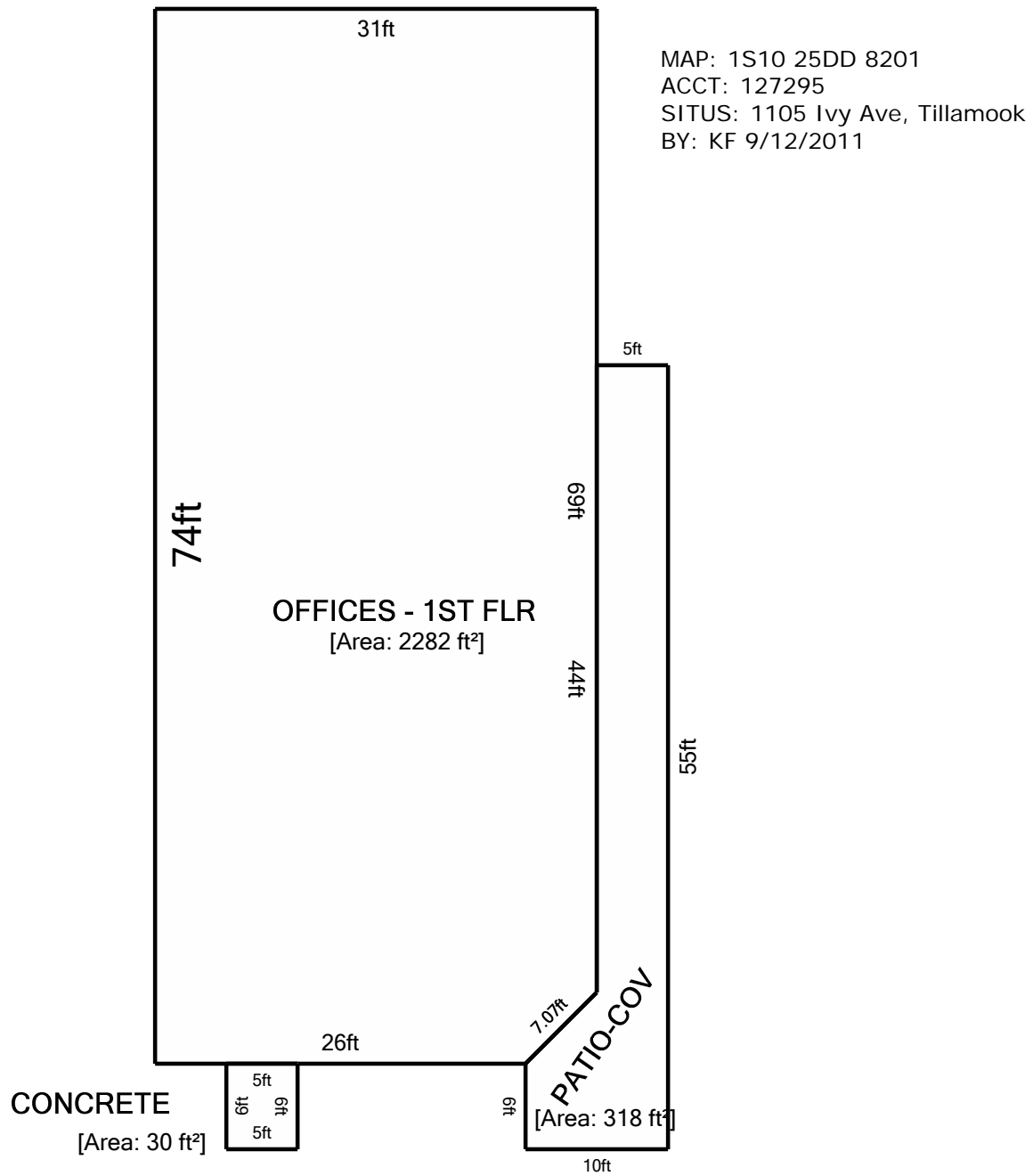


Sketch



Living Area		Nonliving Area	
OFFICES - 1ST FLR	2281.5 ft²	PATIO-COV	317.5 ft²
		CONCRETE	30 ft²
Total Living Area (rounded):	2282 ft²	Total Non-Living Area (rounded):	348 ft²

THIS SKETCH WAS PREPARED FOR ASSESSMENT PURPOSES ONLY. TILLAMOOK COUNTY