

OFFICE SPACE FOR LEASE

Lafayette Office Suites

1020-1030 LAFAYETTE STREET • TALLAHASSEE, FL • 32301

OR SCAN TO VIEW INFO



1 MILE FROM DOWNTOWN



PROPERTY OVERVIEW

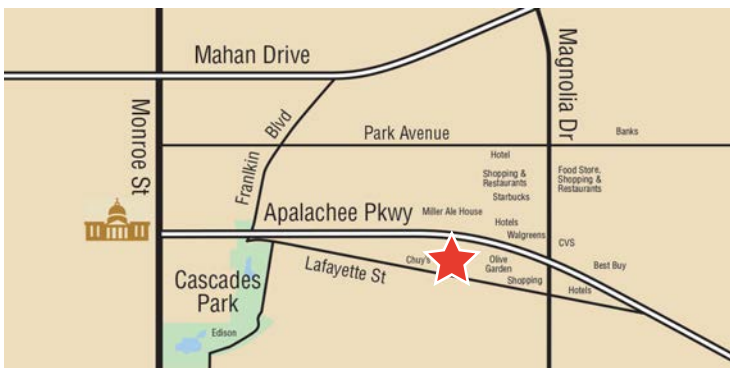
Square Footage Available	288 - 1,254 sf
Property Type	Office
Property Size	2 bldgs totaling 30,657 sf
Class	B
Year Built	2008 (1020) & 1974 (1030)
Parking Ratio	3.91/1,000

PROPERTY FEATURES

- + Office sizes ranging from 288 to 1,254 square feet
- + Private entrances available
- + New state of the art UV Sanitation
- + Large, well equipped conference rooms available
- + 120 on-site parking spaces
- + Fiber connectivity

LOCATION

- + Conveniently located 1 mile from downtown Tallahassee
- + Situated just south of Apalachee Parkway, between S Monroe St and Magnolia Dr



For additional information, contact:

Jennie Bram
 (850) 443-3090 mobile
jbram@ciminelli.com

Ciminelli
 REAL ESTATE SERVICES
PROCTOR & LONG GROUP

OFFICE SPACE FOR LEASE

Lafayette Office Suites

1020-1030 LAFAYETTE STREET • TALLAHASSEE, FL • 32301

OR SCAN TO VIEW INFO



2020 DEMOGRAPHIC INFORMATION

RADIUS	1 MILE	3 MILE	5 MILE
Population	5,382	89,673	171,380
Total Households	2,993	36,388	70,457
Median Age	37.4	26.9	27.4
Median HH Income	\$47,815	\$37,531	\$39,601

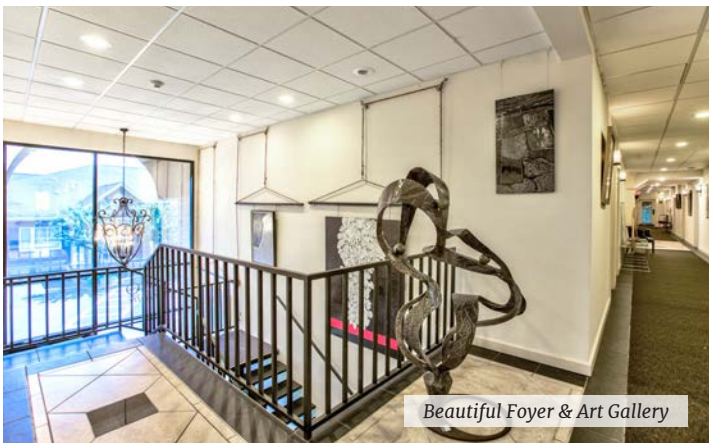
Source: Esri Market Profile/US Census Bureau



Office Suites



Conference Room Available



Beautiful Foyer & Art Gallery



Beautiful Foyer & Art Gallery

For additional information, contact:

Jennie Bram
 (850) 443-3090 mobile
jbram@ciminelli.com

Ciminelli
 REAL ESTATE SERVICES
 PROCTOR & LONG GROUP

825 Thomasville Rd • Tallahassee, FL 32303 + Office Phone: (850) 765-7063 + www.CiminelliFlorida.com

All information given herein is obtained from sources considered reliable. However, we are not responsible for misstatement of facts, errors, omissions, prior sale, withdrawal from market, modification of mortgage commitment, terms and considerations, or change in price without notice. The information supplied herein is for informational purposes only and shall not contain a warranty or assurance that said information is correct. Any person intending to rely upon the information supplied herein should verify said information independently.