



## David Chapin Commercial

- 38,000 RSF Former Bed Bath Beyond Call Center Available
- Easily repurposed to multi-use including light assembly/technology uses
- Plug N Play, Like new condition. \$6 Million TI fit out in 2017, all new power, roof and HVAC
- 18' clear ceilings
- 3 dock doors available
- High parking ratio available
- 9407 West Colonial Drive, Ocoee FL

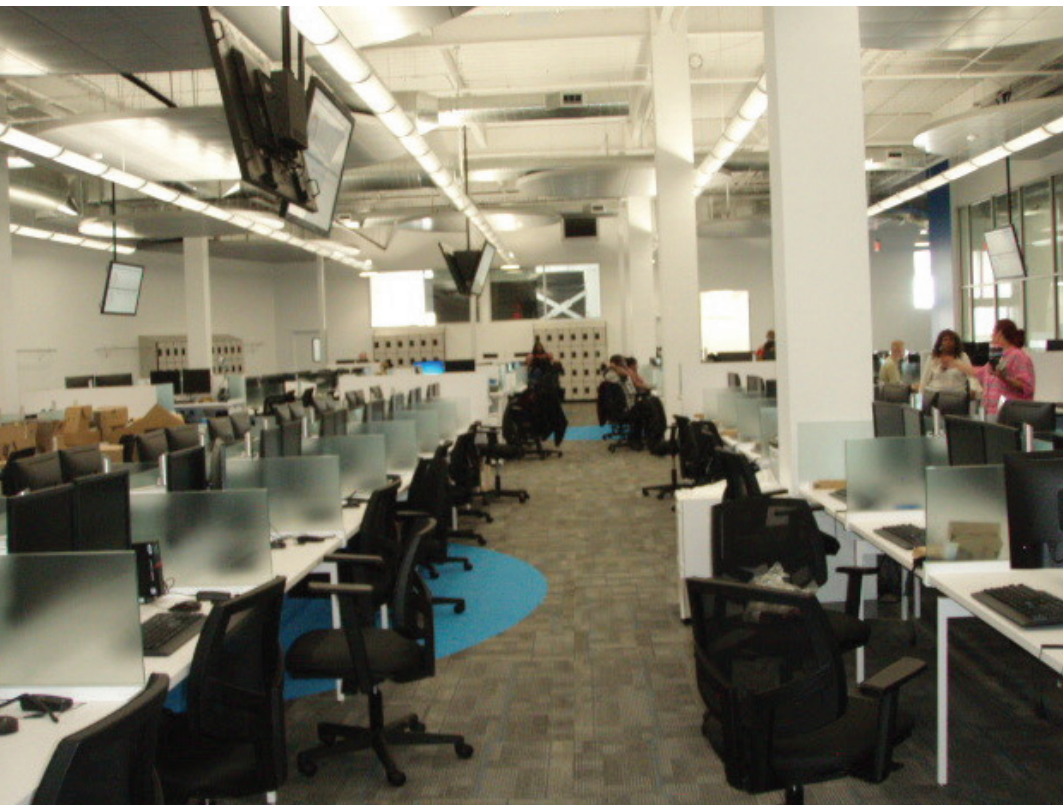




## BUILDING

---

- 212,000 RSF total available
- 2 story, 100,000 SF floors
- Adjacent to SR 408 and SR 429 connecting western beltway with downtown Orlando
- Favorable labor market
- Proximity to Windermere via Apopka Vineland Rd.



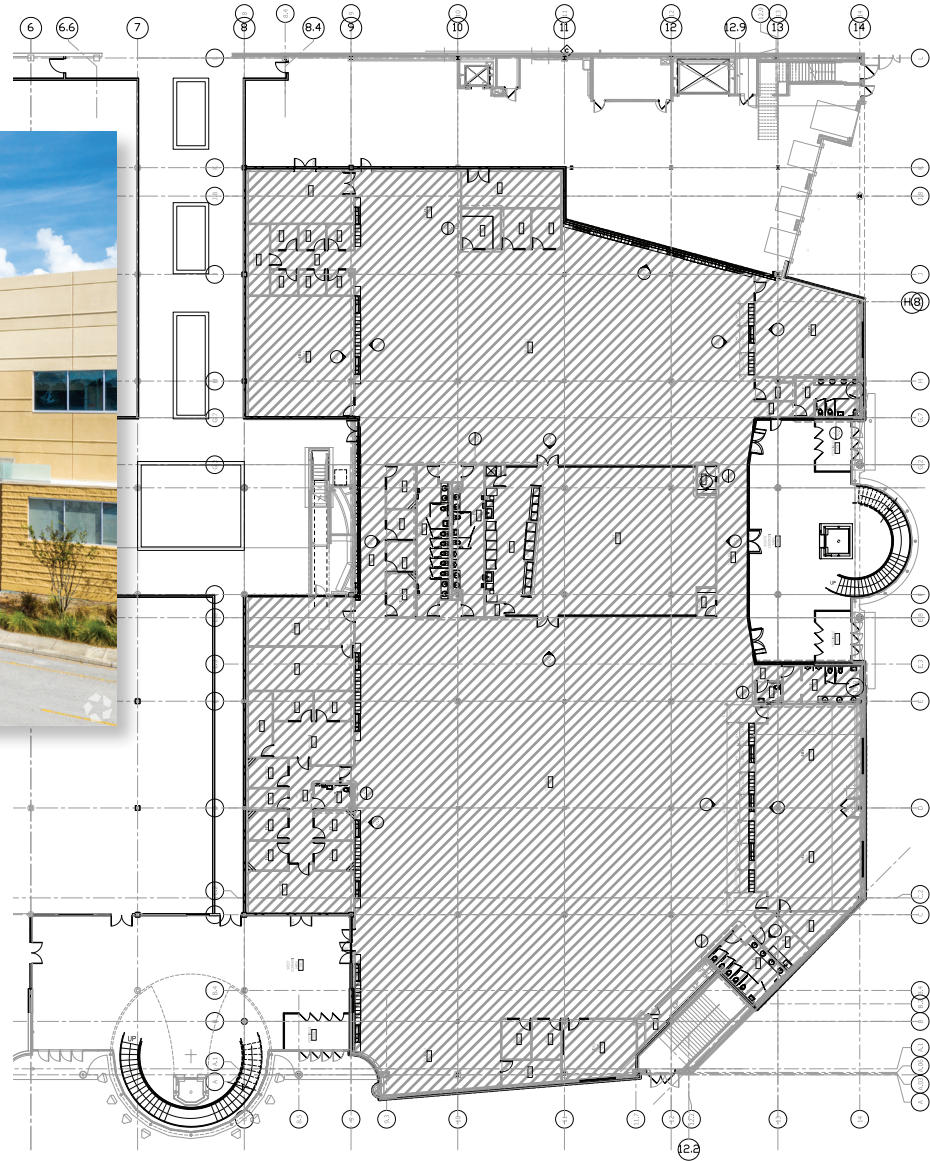






# 9401 W COLONIAL DR

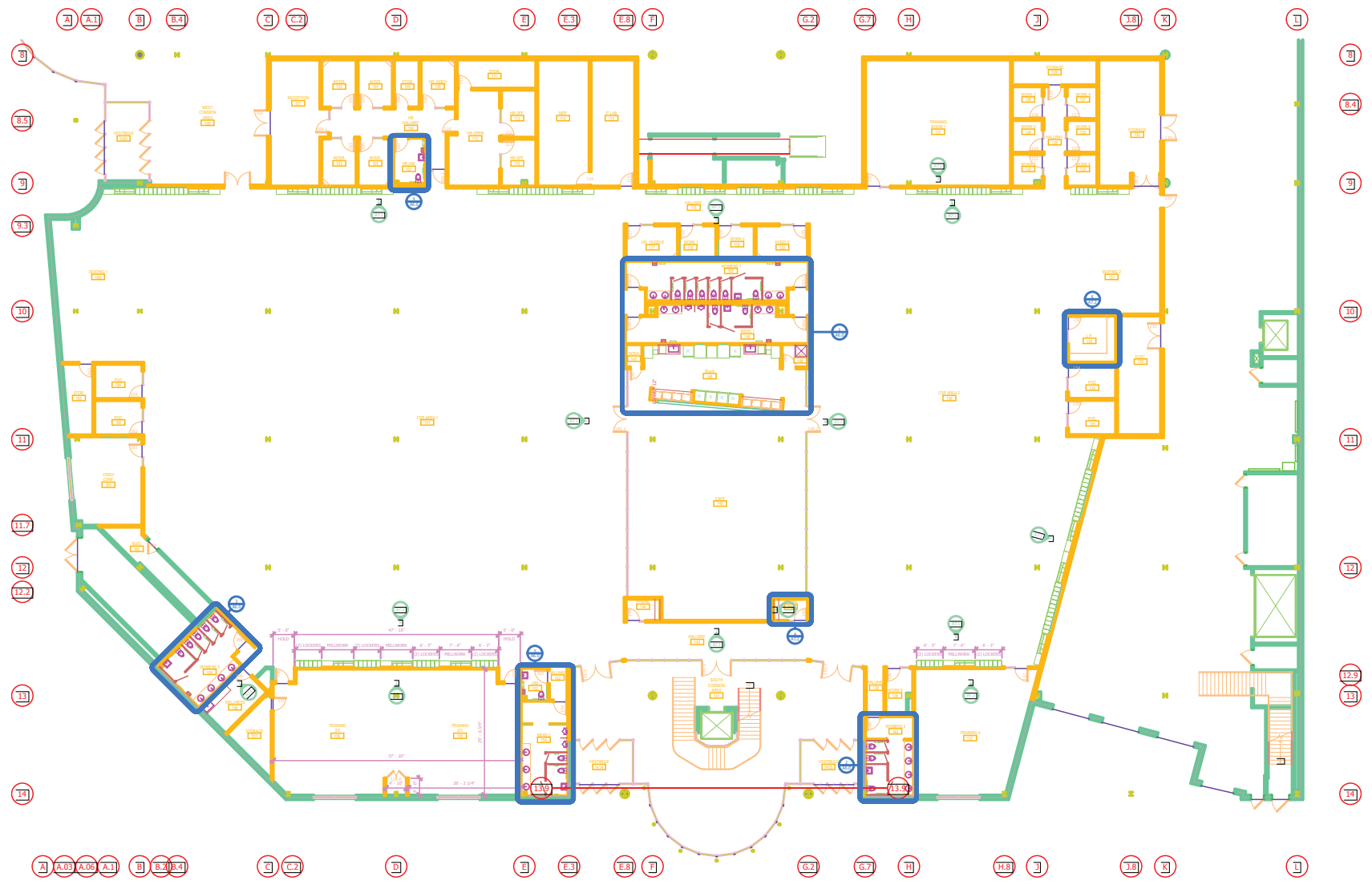
## Tenant "A" Area





# 9401 W COLONIAL DR

## Floor Plan







**David Chapin Commercial**

**450 South Orange Avenue Suite 300, Orlando, FL 32801 | Direct 407-616-3195**

**[DavidChapin@DavidChapinCommercial.com](mailto:DavidChapin@DavidChapinCommercial.com)**