

**NOW LEASING**

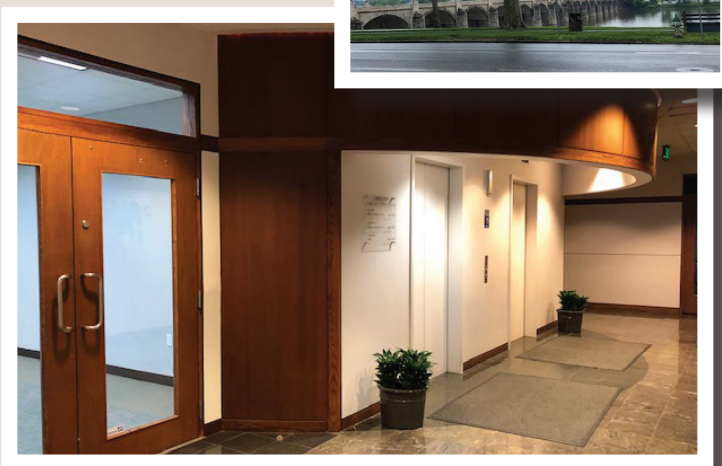


**DOWNTOWN HARRISBURG OFFICE SPACE  
UP TO 9,446 TOTAL RENTABLE SQFT**

## **KEYSTONE PLAZA**

100 Market Street Harrisburg, PA

- On-site parking available
- Ideal location on the corner of Front and Market Streets, some with water or river front views
- On-site professional maintenance staff
- Class A space located on the first floor



717-730-4141  
[WWW.RENTPMI.COM](http://WWW.RENTPMI.COM)

1300 MARKET STREET  
LEMOYNE, PA 17043



## PROFESSIONAL PROPERTY MANAGEMENT FOR OVER 50 YEARS

At PMI, we are the professionals who know how to delight our tenants and residents through effective and responsive property management. We are an Accredited Management Organization®, which is just one small demonstration of our commitment to serving tenants. Real estate management is not a part of our business; it is our only business.

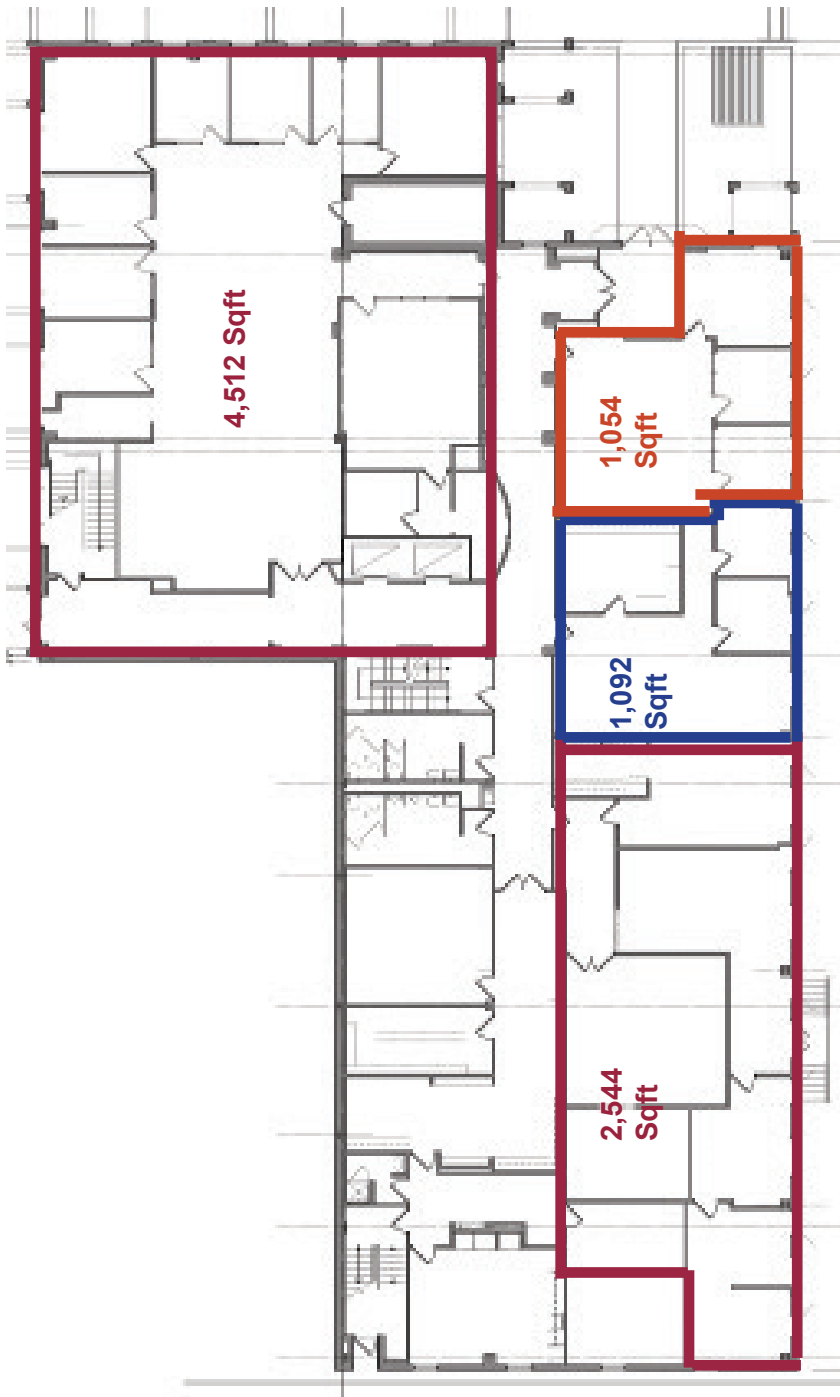
CALL PMI TO LEARN MORE  
ABOUT AVAILABLE OFFICE SPACE, APARTMENTS, AND  
OUR PROPERTY MANAGEMENT SOLUTIONS



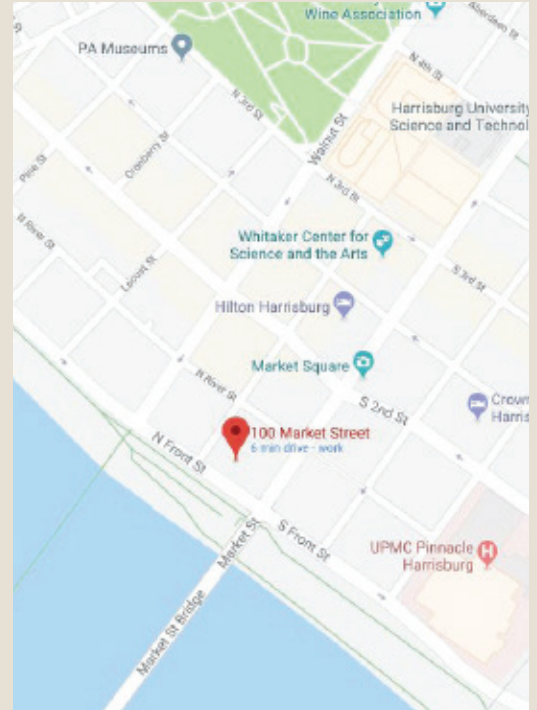
717-730-4141  
WWW.RENTPMI.COM

1300 MARKET STREET  
LEMOYNE, PA 17043

## AVAILABLE SPACES:



## Location Map



## Aerial Map

