

1062 FOLSOM STREET

FOR LEASE | NEWLY REMODELED BRICK & TIMBER CREATIVE SPACE

TCP
TOUCHSTONE
COMMERCIAL PARTNERS



WWW.TCPRE.COM

ZACH HAUPERT zhaupert@tcpre.com
D 415.539.1121 | C 415.812.1219

MICHAEL SANBERG msanberg@tcpre.com
D 415.539.1103 | C 415.697.6088

1062 FOLSOM STREET

PROPERTY SUMMARY

ADDRESS

1062 Folsom Street, San Francisco, CA 94103

AVAILABLE SPACE

Third Floor +/- 4,000 Square Feet

Second Floor +/- 4,000 Square Feet

TOTAL +/- 8,000 Square Feet

**Floors Can Be Leased Together or Separately*

RENTAL RATE

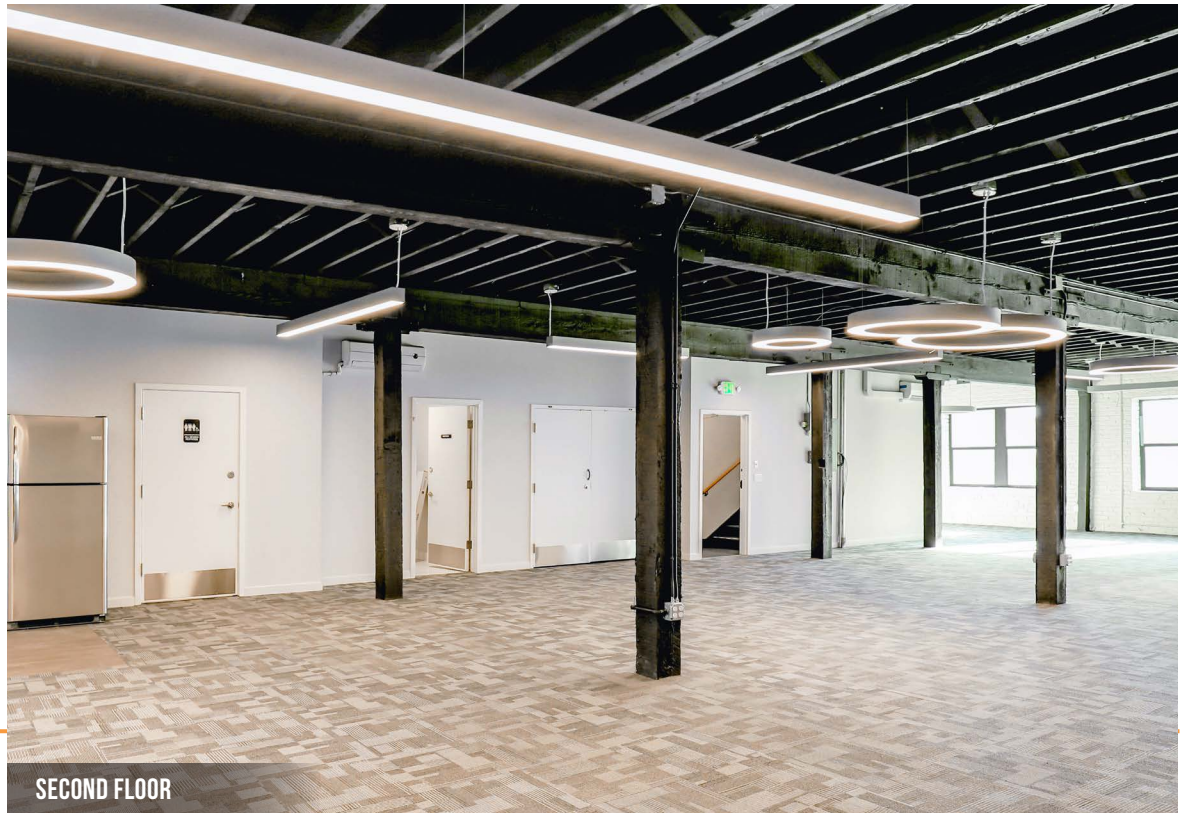
\$27 / Square Foot / Year, Industrial Gross

AVAILABLE

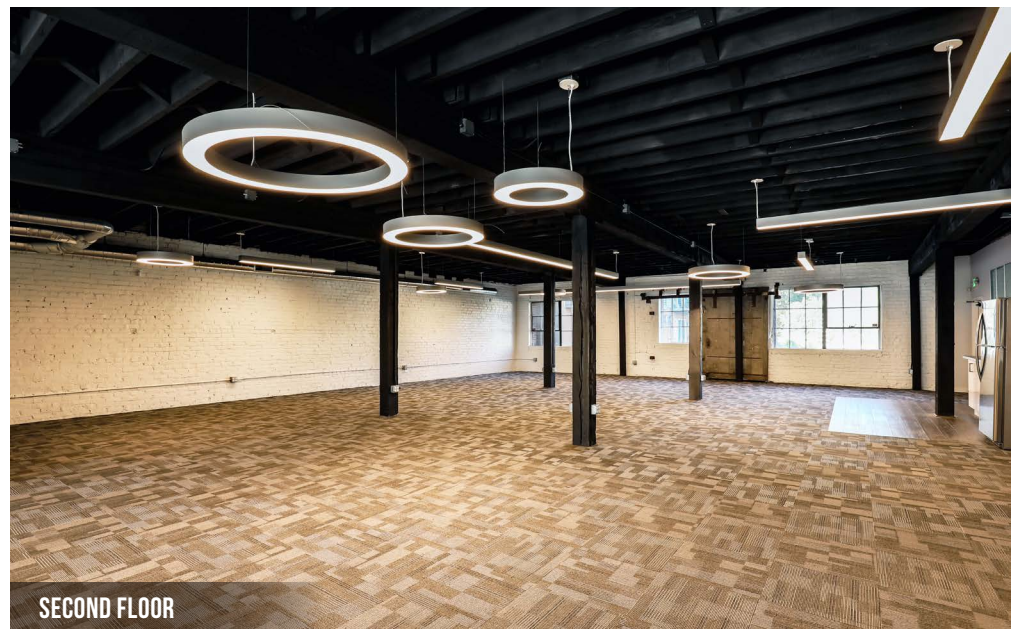
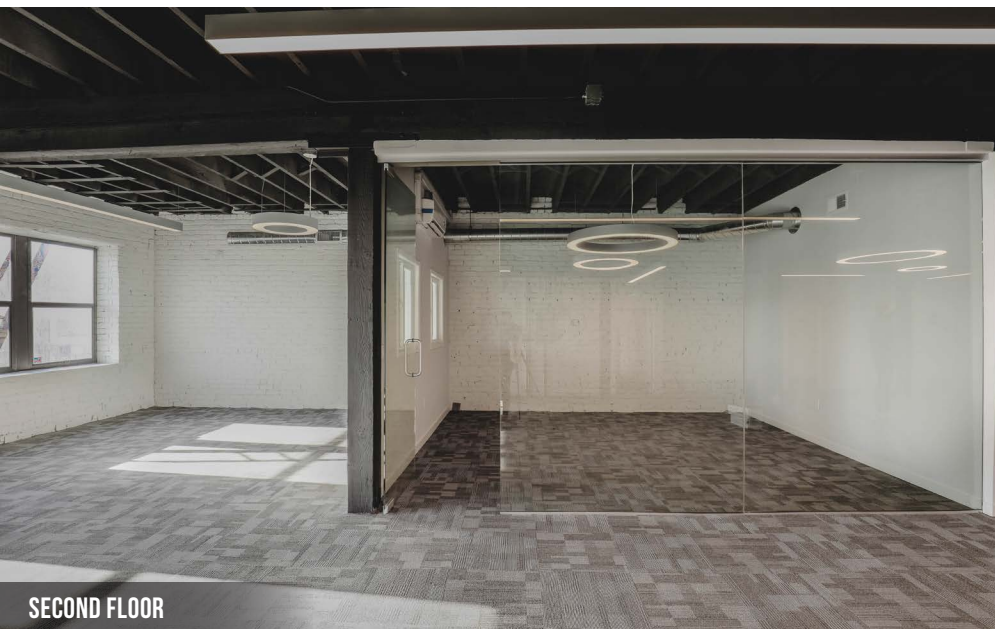
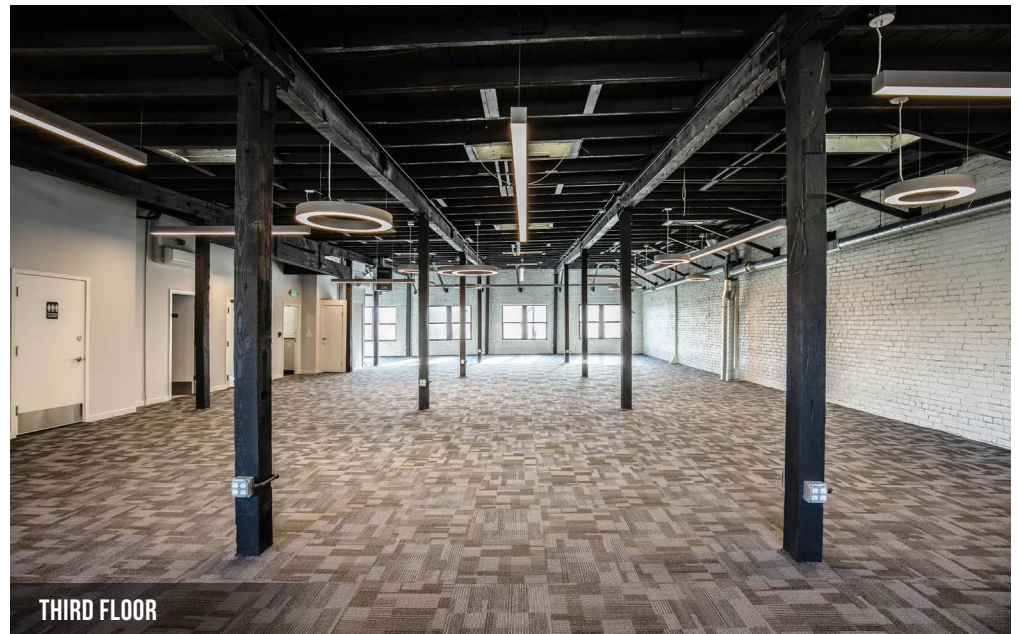
Immediately

BUILDING ATTRIBUTES

- + Newly Remodeled Brick & Timber Creative Space
- + Fantastic Natural Light
- + Open Plan w/ Conference Rooms
- + Two Restrooms
- + Kitchenette
- + FULL HVAC
- + Freight Elevator to Unit
- + Walkable To BART, Muni, and Neighborhood Amenities



1062 FOLSOM STREET



1062 FOLSOM STREET

LOCATION OVERVIEW

Desirable South of Market location, walkable to nearby amenities and to surrounding neighborhoods.



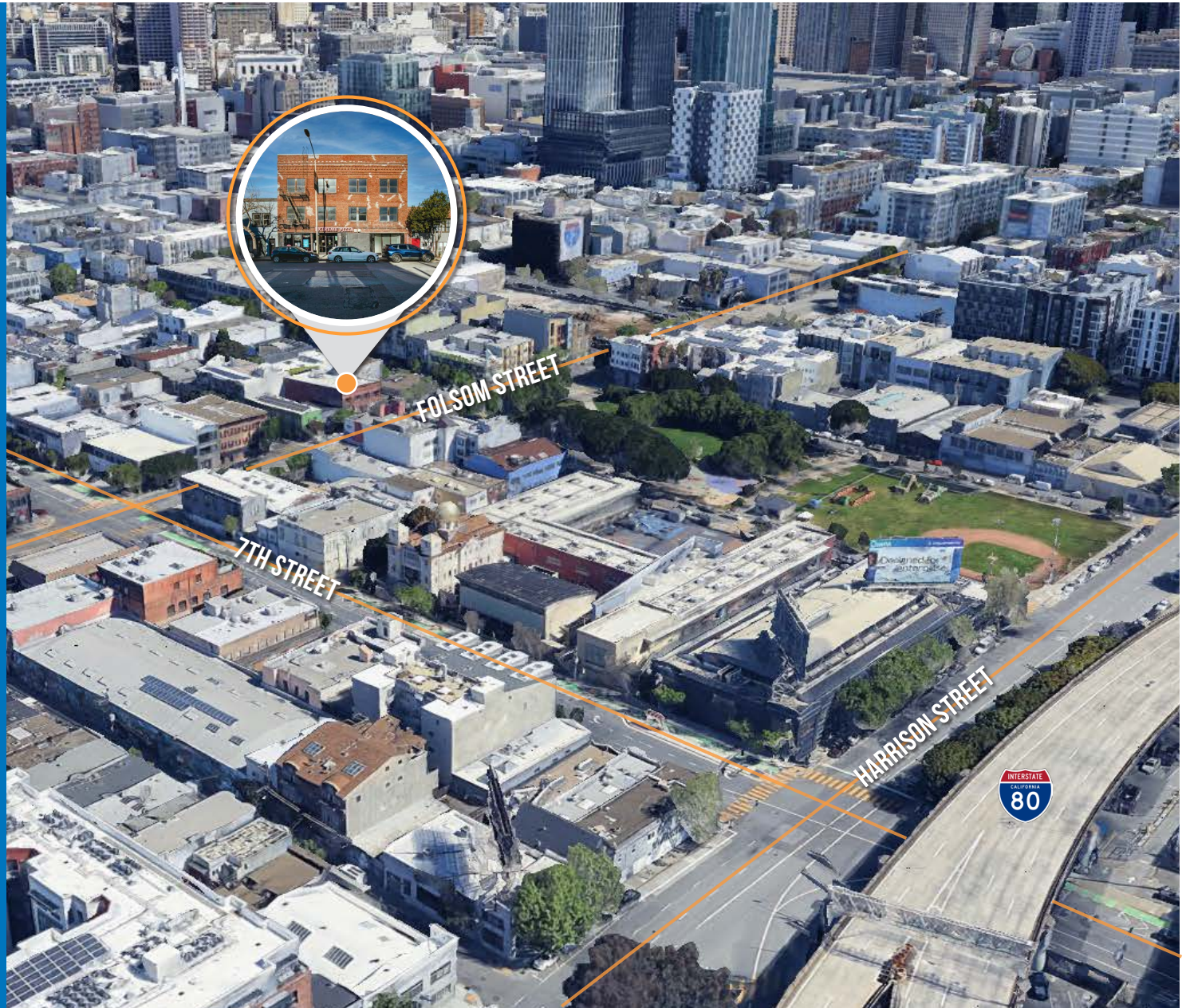
02 MIN to Folsom St Muni
11 MIN to Civic Center BART
22 MIN to 4th St. Caltrain



05 MIN to Union Square
07 MIN to Mission District
12 MIN to Financial District



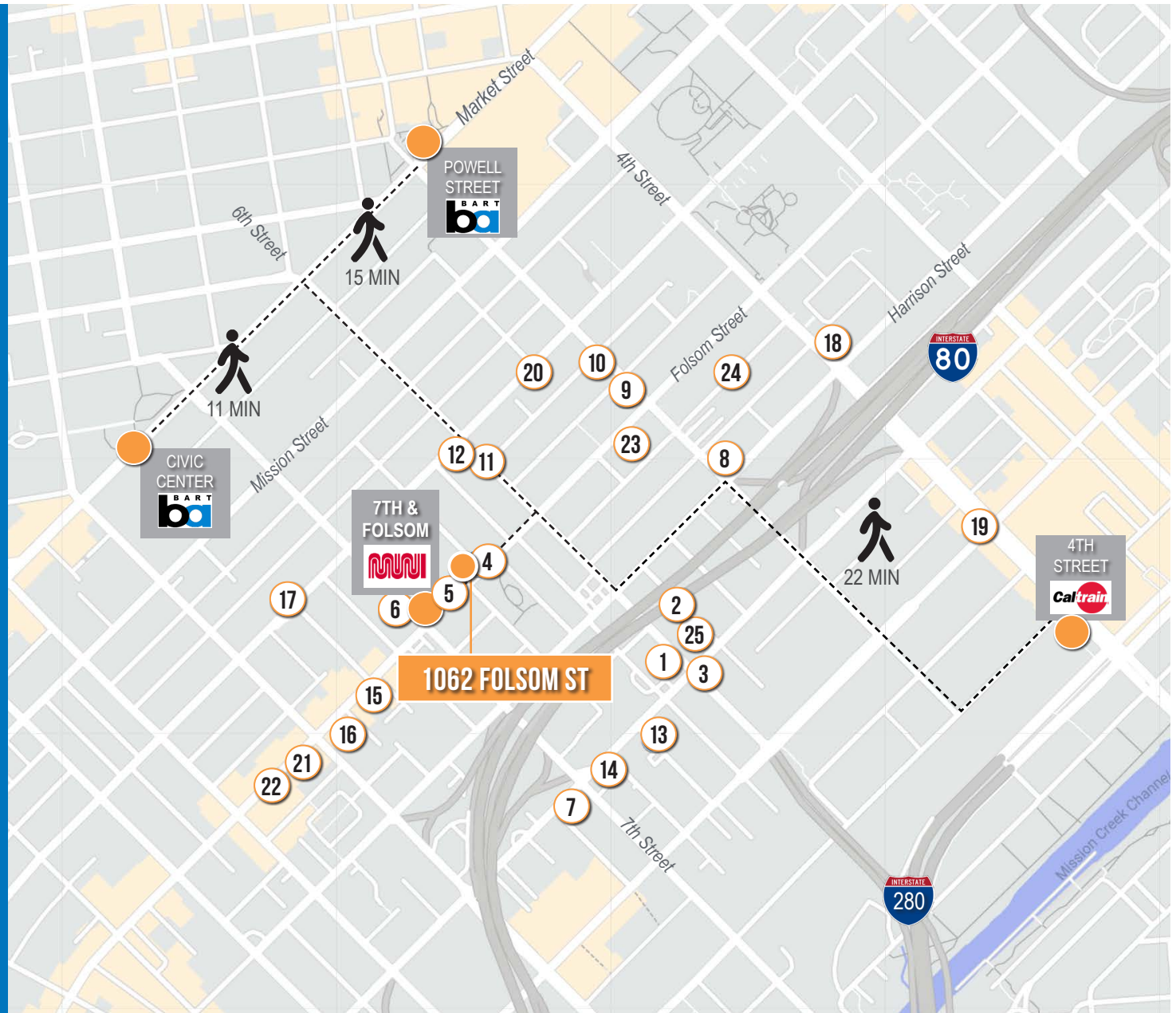
03 MIN to 80 On-Ramp
03 MIN to 280 On-Ramp
04 MIN to 101 On-Ramp



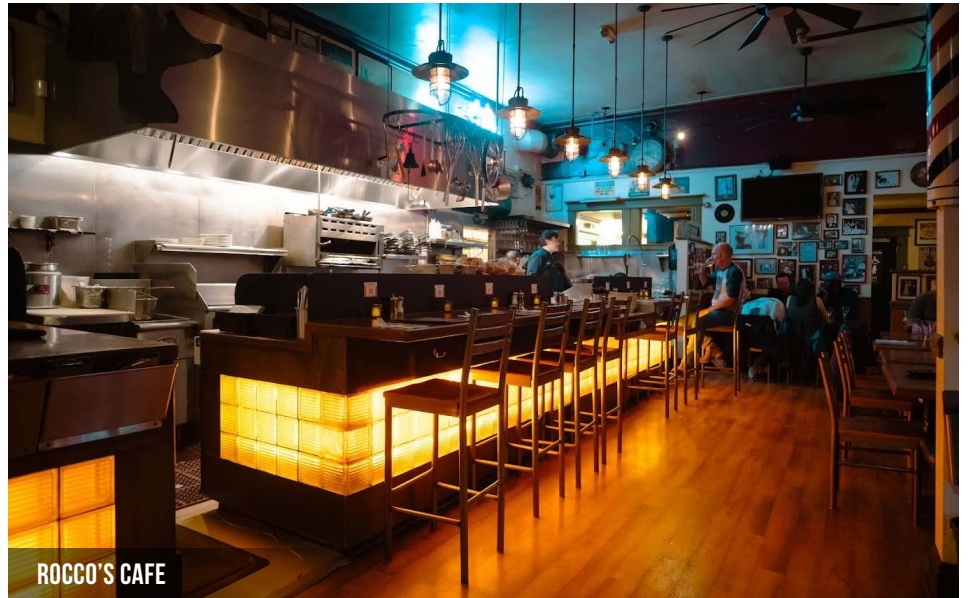
1062 FOLSOM STREET

NEARBY AMENITIES

- 1.....Social Cafe
- 2..... SoMA Food Court
- 3..... Pho de Nguyen
- 4..... Deli Board
- 5.....Extreme Pizza
- 6.....Sightglass Coffee
- 7.....PPG Paint Store
- 8.....All Star Donuts
- 9.....Mr. East Kitchen
- 10.....OpenLight Films
- 11.....Zesty SF
- 12..... Bini's Kitchen
- 13..... Dinosaurs Sandwiches
- 14..... Mars Bar & Restaurant
- 15.....Rocco's Cafe
- 16.....Basil Thai Restaurant & Bar
- 17.....Enterprise Brewing Co.
- 18.....Whole Foods Market
- 19..... Marlowe
- 20..... Tin
- 21.....Ushi Taro Ramen SOMA
- 22.....Driftwood
- 23.....Dragon Horse
- 24.....Buena Vida Cantina
- 25.....AyDea



1062 FOLSOM STREET



1062 FOLSOM STREET



Corp. Lic. 01112906
www.tcpre.com

ZACH HAUPERT

D 415.539.1121 C 415.812.1219
zhaupert@tcpre.com DRE # 01822907

MICHAEL SANBERG

D 415.539.1103 C 415.697.6088
msanberg@tcpre.com DRE # 01930041

This document has been prepared by Touchstone Commercial Partners for advertising and general information only. Touchstone Commercial Partners makes no guarantees, representations or warranties of any kind, expressed or implied, regarding the information including, but not limited to, warranties of content, accuracy and reliability. Any interested party should undertake their own inquiries as to the accuracy of the information. Touchstone Commercial Partners excludes unequivocally all inferred or implied terms, conditions and warranties arising out of this document and excludes all liability for loss and damages arising there from. This publication is the copyrighted property of Touchstone Commercial Partners and/or its licensor(s). ©2025. All rights reserved.