

1548 State Road
Duncannon, PA 17020

\$10/sq. ft. NNN

*NNN includes but not limited to Real Estate Taxes, Insurance, and CAM (such as parking lot maintenance, snow removal, lawn care, etc.)

RETAIL SPACE FOR LEASE

Aerial - Site View

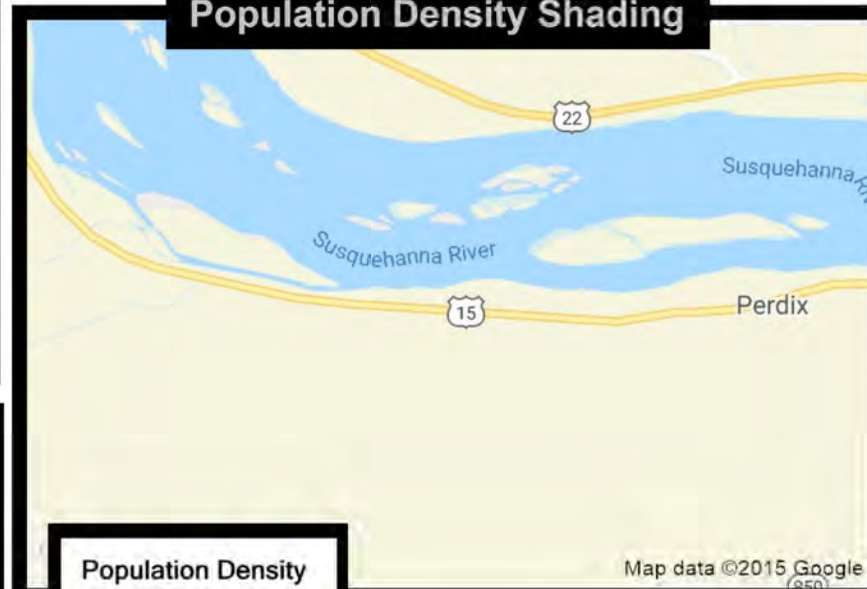


2,500 sq. ft. available with Dollar General

Great visibility from State Road (State Route 15) and State Route 11

Center is next to Sheetz on high-traffic State Road

Population Density Shading



Population Density

By Blockgroups

- 7,500 or more
- 5,000 to 7,500
- 2,500 to 5,000
- 1,000 to 2,500
- Less than 1,000

Demographic Data

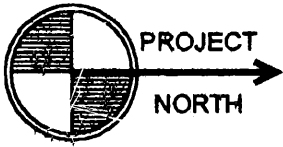
	1 mi radius	3 mi radius	5 mi radius
Population (2019)	182	6,548	24,296
Households (2019)	70	2,786	10,303
Median household income (2019)	\$66,425	\$76,728	\$76,064
Total Employees	366	1,189	7,888
Total Establishments	17	112	751

COCCA DEVELOPMENT, LTD

100 DEBARTOLO PLACE SUITE 400 BOARDMAN, OHIO 44512
(330) 729-1010

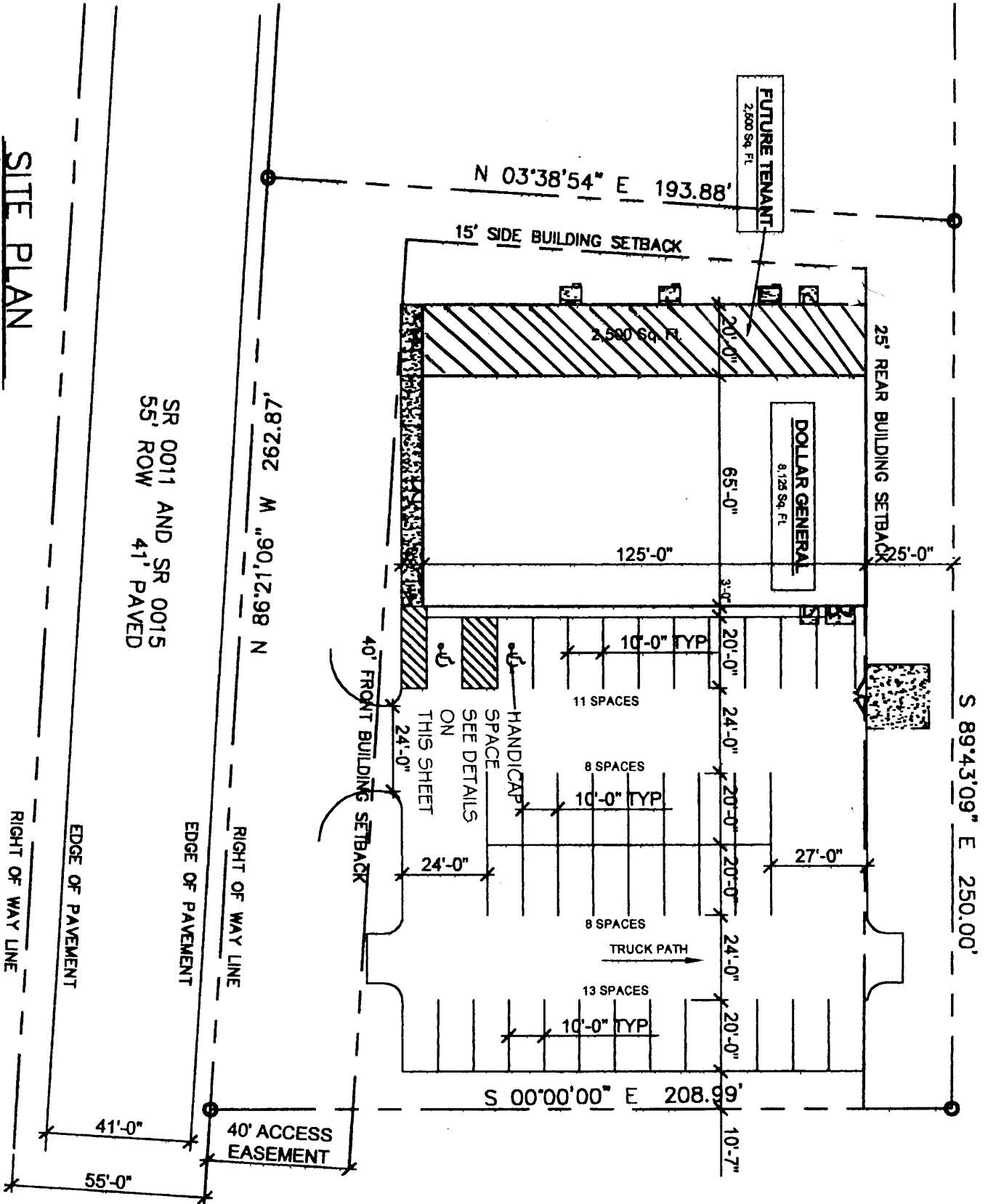
WWW.COCCADEVELOPMENT.COM

This map was produced using data from private and government sources deemed to be reliable. The information herein is provided without representation or warranty.



SITE PLAN

SCALE: 1" = 30'-0"



SR 0011 AND SR 0015
55' ROW 41' PAVED

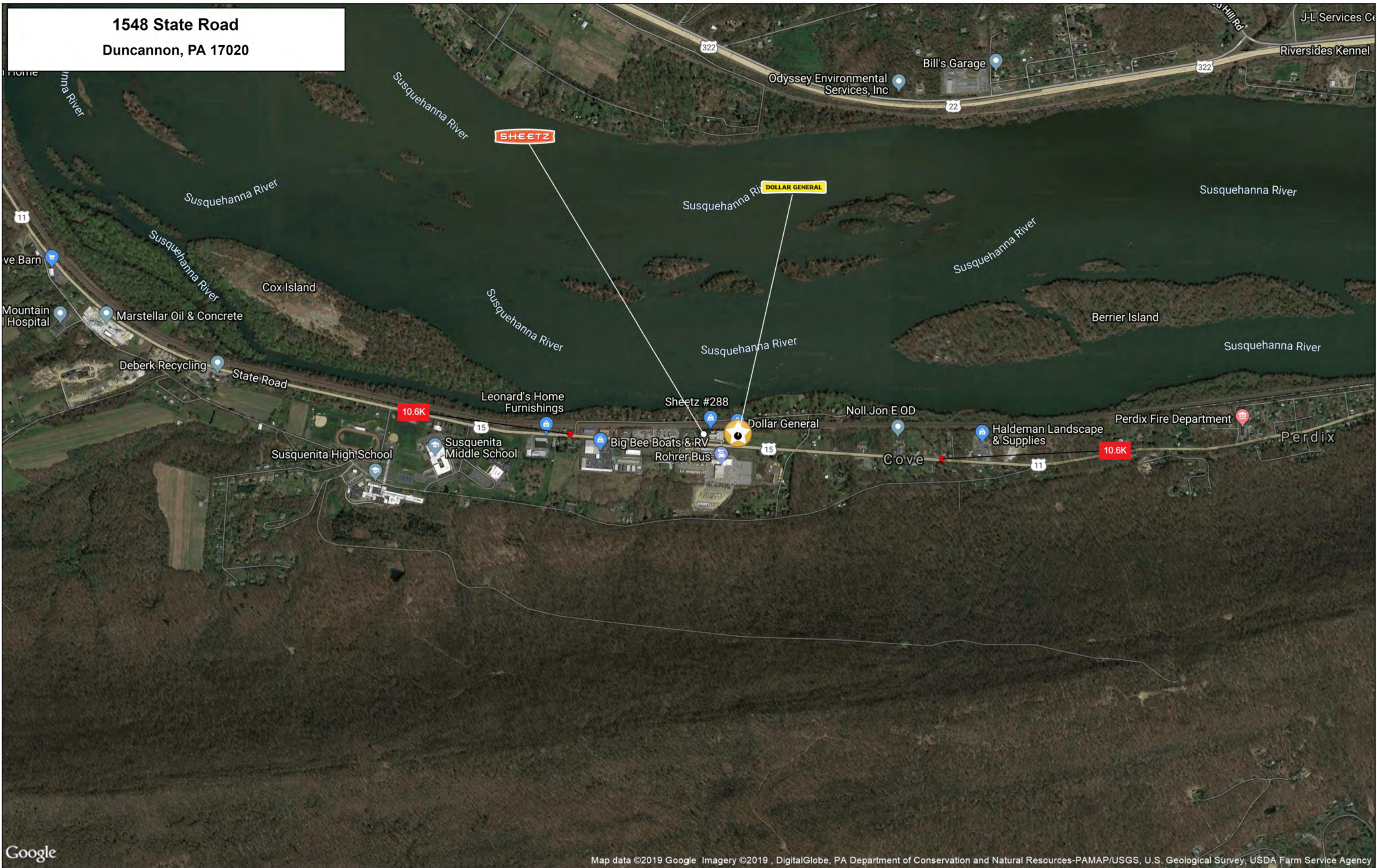
RIGHT OF WAY LINE

EDGE OF PAVEMENT

EDGE OF PAVEMENT

RIGHT OF WAY LINE

1548 State Road
Duncannon, PA 17020



Lat: 40.35564 Long: -76.98828 Zoom: 15

Logos are for identification purposes only and may be trademarks of their respective companies.

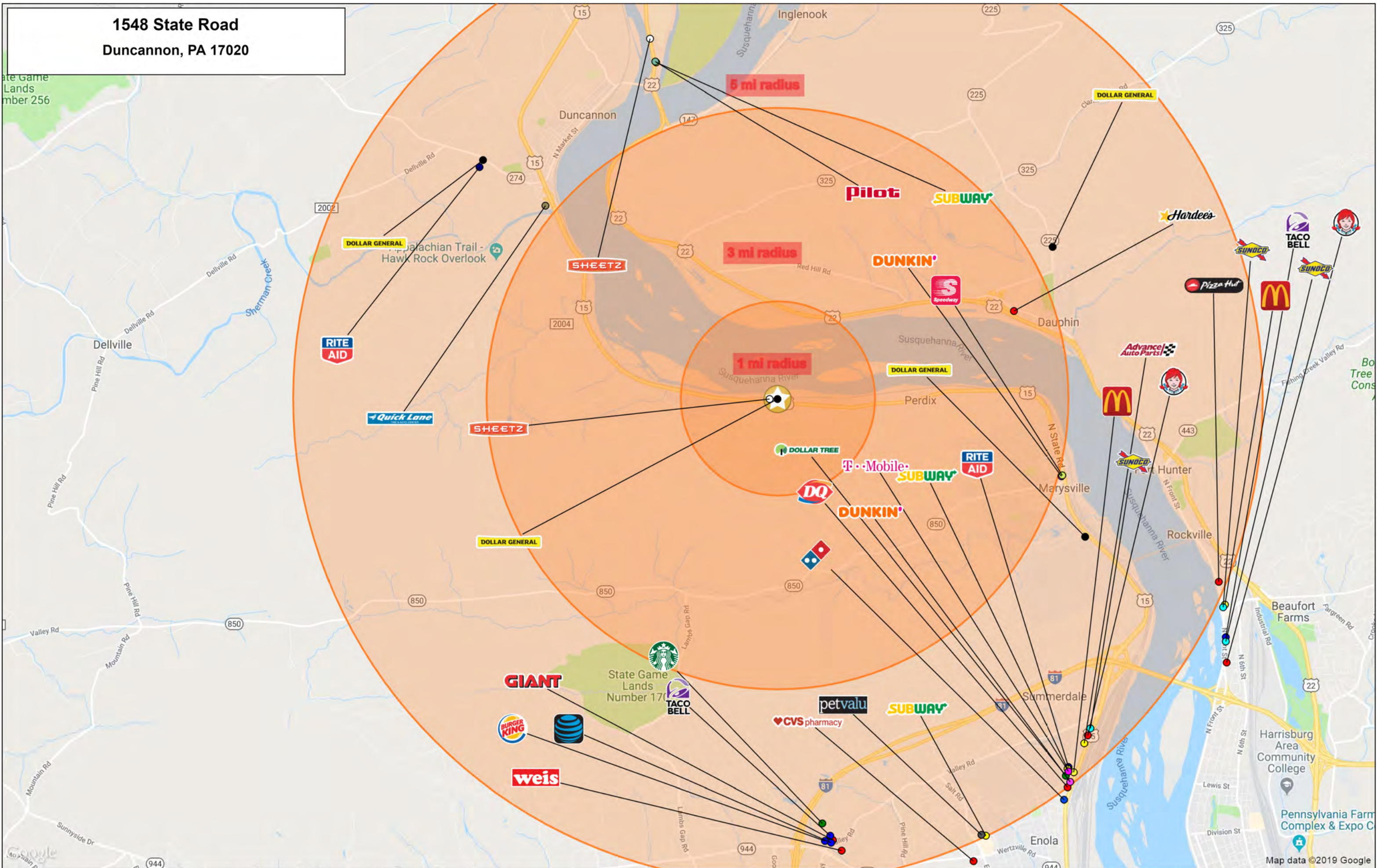
Google

Map data ©2019 Google Imagery ©2019 DigitalGlobe, PA Department of Conservation and Natural Resources-PAMAP/USGS, U.S. Geological Survey, USDA Farm Service Agency

This map was produced using data from private and government sources deemed to be reliable. The information herein is provided without representation or warranty

©2019, SITES USA Inc., Chandler, AZ (480) 491-1112. All Rights Reserved.

1548 State Road
Duncannon, PA 17020



This map was produced using data from private and government sources deemed to be reliable. The information herein is provided without representation or warranty.

©2019, SITES USA Inc., Chandler, AZ (480) 491-1112. All Rights Reserved.

Lat: 40.35020 Long: -77.00346 Zoom: 13
Logos are for identification purposes only and may be trademarks of their respective companies.

GRAPHIC PROFILE

2000-2010 Census, 2019 Estimates with 2024 Projections

Calculated using Weighted Block Centroid from Block Groups

Lat/Lon: 40.3557/-76.9858

RGRAP3

1548 State Road

Duncannon, PA 17020

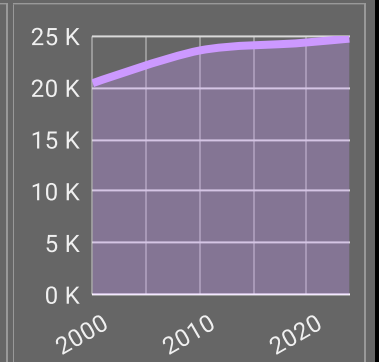
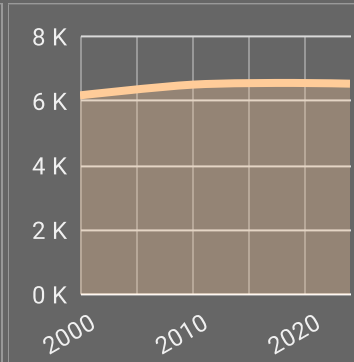
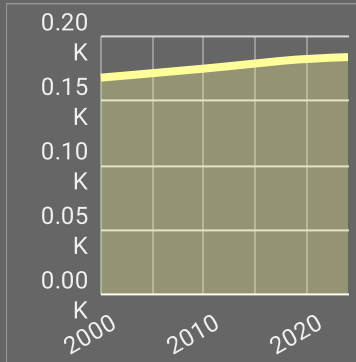
1 mi radius

3 mi radius

5 mi radius

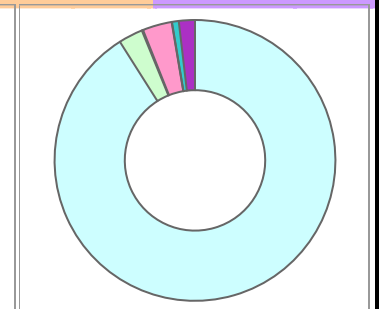
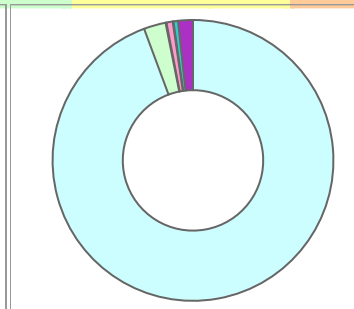
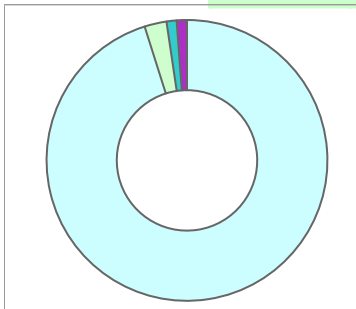
Population

Estimated Population (2019)	182	6,557	24,296
Projected Population (2024)	184	6,534	24,755
Census Population (2010)	175	6,504	23,608
Census Population (2000)	168	6,172	20,448
Projected Annual Growth (2019-2024)	2 0.2%	-23 -	459 0.4%
Historical Annual Growth (2010-2019)	7 0.4%	53 -	688 0.3%
Historical Annual Growth (2000-2010)	7 0.4%	332 0.5%	3,160 1.5%
Estimated Population Density (2019)	58 <i>psm</i>	232 <i>psm</i>	309 <i>psm</i>
Trade Area Size	3.1 <i>sq mi</i>	28.3 <i>sq mi</i>	78.5 <i>sq mi</i>



Race and Ethnicity (2019)

Not Hispanic or Latino Population	175 96.1%	6,360 97.0%	23,550 96.9%
White	168 95.8%	6,051 95.1%	21,659 92.0%
Black or African American	5 2.6%	159 2.5%	645 2.7%
American Indian or Alaska Native	- -	7 0.1%	30 0.1%
Asian	- -	43 0.7%	810 3.4%
Hawaiian or Pacific Islander	- -	5 -	8 -
Other Race	- -	- -	21 -
Two or More Races	2 1.2%	95 1.5%	376 1.6%
Hispanic or Latino Population	7 3.9%	197 3.0%	746 3.1%
White	4 62.0%	134 68.3%	454 60.8%
Black or African American	- -	7 3.7%	35 4.7%
American Indian or Alaska Native	- -	- -	6 0.8%
Asian	- -	4 2.0%	9 1.3%
Hispanic Hawaiian or Pacific Islander	- -	- -	- -
Other Race	2 29.5%	35 17.6%	169 22.7%
Two or More Races	- -	17 8.4%	73 9.8%



White Black or African American American Indian or Alaska Native Asian Hawaiian or Pacific Islander Other Race 2+ Races

This report was produced using data from private and government sources deemed to be reliable. The information herein is provided without representation or warranty.

GRAPHIC PROFILE

2000-2010 Census, 2019 Estimates with 2024 Projections

Calculated using Weighted Block Centroid from Block Groups

Lat/Lon: 40.3557/-76.9858

RGRAP3

1548 State Road

Duncannon, PA 17020

1 mi radius

3 mi radius

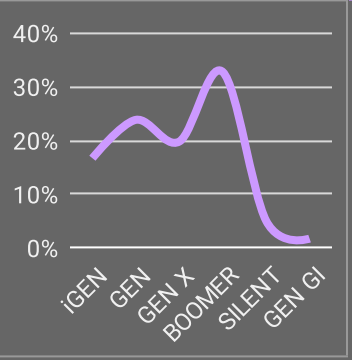
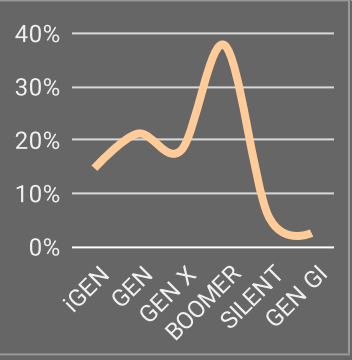
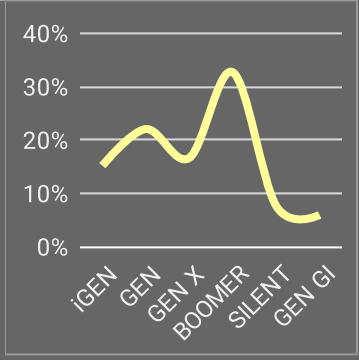
5 mi radius

Age Distribution (2019)

Age Group	1 mi radius	3 mi radius	5 mi radius
Age Under 5 Years	11 5.9%	347 5.3%	1,373 5.6%
Age 5 to 9 Years	8 4.5%	313 4.8%	1,350 5.6%
Age 10 to 14 Years	9 4.7%	302 4.6%	1,339 5.5%
Age 15 to 19 Years	7 4.0%	318 4.8%	1,412 5.8%
Age 20 to 24 Years	9 4.8%	290 4.4%	1,242 5.1%
Age 25 to 29 Years	13 7.1%	382 5.8%	1,529 6.3%
Age 30 to 34 Years	11 6.1%	398 6.1%	1,614 6.6%
Age 35 to 39 Years	10 5.7%	402 6.1%	1,712 7.0%
Age 40 to 44 Years	9 4.9%	360 5.5%	1,486 6.1%
Age 45 to 49 Years	11 6.0%	423 6.4%	1,616 6.7%
Age 50 to 54 Years	13 7.1%	522 8.0%	1,705 7.0%
Age 55 to 59 Years	13 7.1%	563 8.6%	1,912 7.9%
Age 60 to 64 Years	13 7.4%	553 8.4%	1,808 7.4%
Age 65 to 69 Years	12 6.5%	463 7.1%	1,435 5.9%
Age 70 to 74 Years	8 4.6%	372 5.7%	1,105 4.5%
Age 75 to 79 Years	9 5.0%	236 3.6%	749 3.1%
Age 80 to 84 Years	5 2.7%	147 2.2%	483 2.0%
Age 85 Years or Over	11 5.9%	166 2.5%	428 1.8%
Median Age	45.8	45.8	41.3

Generation (2019)

Generation	1 mi radius	3 mi radius	5 mi radius
iGeneration (Age Under 15 Years)	28 15.2%	963 14.7%	4,062 16.7%
Generation 9/11 Millennials (Age 15 to 34 Years)	40 22.0%	1,388 21.2%	5,797 23.9%
Gen Xers (Age 35 to 49 Years)	30 16.6%	1,185 18.1%	4,814 19.8%
Baby Boomers (Age 50 to 74 Years)	59 32.7%	2,473 37.7%	7,964 32.8%
Silent Generation (Age 75 to 84 Years)	14 7.6%	383 5.8%	1,232 5.1%
G.I. Generation (Age 85 Years or Over)	11 5.9%	166 2.5%	428 1.8%



This report was produced using data from private and government sources deemed to be reliable. The information herein is provided without representation or warranty.

GRAPHIC PROFILE

2000-2010 Census, 2019 Estimates with 2024 Projections

Calculated using Weighted Block Centroid from Block Groups

Lat/Lon: 40.3557/-76.9858

RGRAP3

1548 State Road

Duncannon, PA 17020

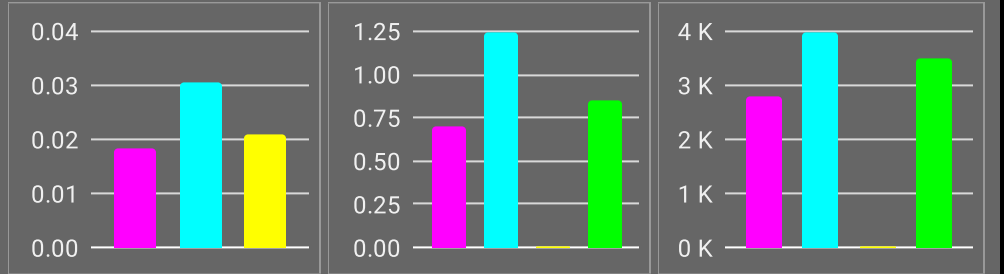
1 mi radius

3 mi radius

5 mi radius

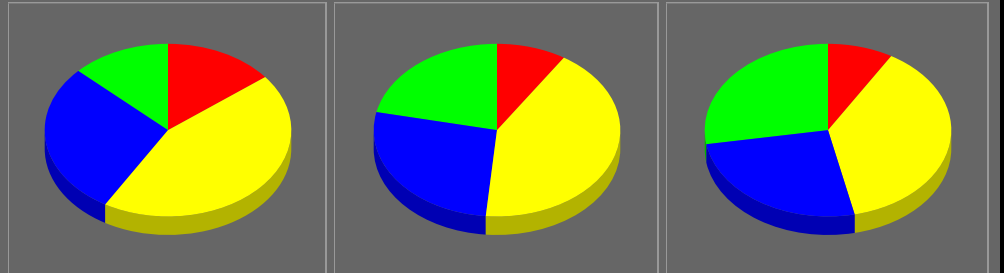
Household Type (2019)

	1 mi radius	3 mi radius	5 mi radius
Total Households	70	2,790	10,303
Family Households	49 69.8%	1,934 69.3%	6,782 65.8%
Family Households with Children	18 37.3%	695 36.0%	2,799 41.3%
Family Households No Children	31 62.7%	1,238 64.0%	3,983 58.7%
Non-Family Households	21 30.2%	856 30.7%	3,521 34.2%
Non-Family Households with Children	- -	8 0.9%	34 1.0%
Non-Family Households No Children	21 98.6%	848 99.1%	3,487 99.0%



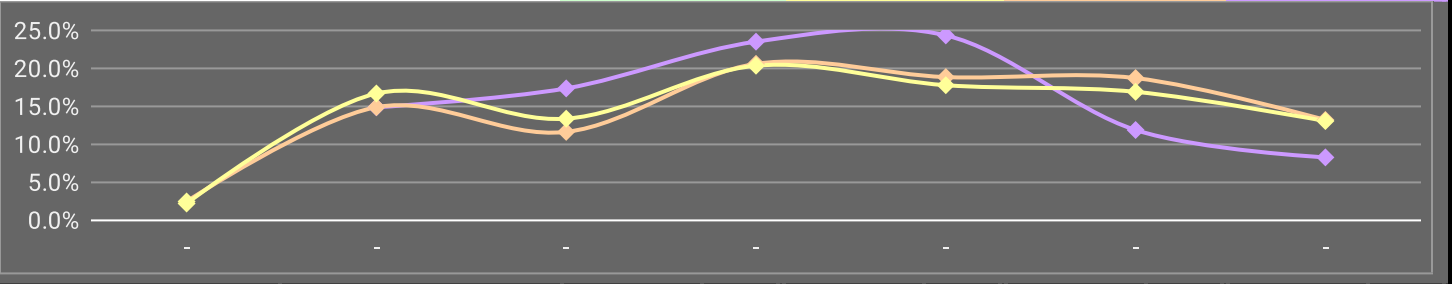
Education Attainment (2019)

	1 mi radius	3 mi radius	5 mi radius
Elementary or Some High School	20 14.5%	455 9.1%	1,507 8.6%
High School Graduate	61 44.0%	2,111 42.3%	6,673 38.0%
Some College or Associate Degree	39 28.5%	1,342 26.9%	4,547 25.9%
Bachelor or Graduate Degree	18 13.0%	1,079 21.6%	4,853 27.6%



Household Income (2019)

	1 mi radius	3 mi radius	5 mi radius
Estimated Average Household Income	\$68,233	\$86,710	\$90,789
Estimated Median Household Income	\$66,425	\$76,732	\$76,064
HH Income Under \$10,000	- -	67 2.4%	220 2.1%
HH Income \$10,000 to \$34,999	10 14.8%	414 14.8%	1,715 16.6%
HH Income \$35,000 to \$49,999	12 17.3%	323 11.6%	1,372 13.3%
HH Income \$50,000 to \$74,999	16 23.5%	573 20.5%	2,092 20.3%
HH Income \$75,000 to \$99,999	17 24.3%	525 18.8%	1,827 17.7%
HH Income \$100,000 to \$149,999	8 11.8%	521 18.7%	1,737 16.9%
HH Income \$150,000 or More	6 8.2%	367 13.2%	1,340 13.0%



This report was produced using data from private and government sources deemed to be reliable. The information herein is provided without representation or warranty.

EXPANDED PROFILE

2000-2010 Census, 2019 Estimates with 2024 Projections

Calculated using Weighted Block Centroid from Block Groups

Lat/Lon: 40.3557/-76.9858

RF5

1548 State Road

Duncannon, PA 17020

Population

	1 mi radius	3 mi radius	5 mi radius
Estimated Population (2019)	182	6,557	24,296
Projected Population (2024)	184	6,534	24,755
Census Population (2010)	175	6,504	23,608
Census Population (2000)	168	6,172	20,448
Projected Annual Growth (2019 to 2024)	2 0.2%	-23 -	459 0.4%
Historical Annual Growth (2010 to 2019)	7 0.4%	53 -	688 0.3%
Historical Annual Growth (2000 to 2010)	7 0.4%	332 0.5%	3,160 1.5%
Estimated Population Density (2019)	58 psm	232 psm	309 psm
Trade Area Size	3.1 sq mi	28.3 sq mi	78.5 sq mi

Households

Estimated Households (2019)	70	2,790	10,303
Projected Households (2024)	72	2,809	10,589
Census Households (2010)	64	2,635	9,628
Census Households (2000)	63	2,434	8,388
Estimated Households with Children (2019)	19 26.5%	703 25.2%	2,833 27.5%
Estimated Average Household Size (2019)	2.42	2.32	2.32

Average Household Income

Estimated Average Household Income (2019)	\$68,233	\$86,710	\$90,789
Projected Average Household Income (2024)	\$78,835	\$103,559	\$107,303
Estimated Average Family Income (2019)	\$84,398	\$102,279	\$113,371

Median Household Income

Estimated Median Household Income (2019)	\$66,425	\$76,732	\$76,064
Projected Median Household Income (2024)	\$74,940	\$87,030	\$87,419
Estimated Median Family Income (2019)	\$81,384	\$91,179	\$92,392

Per Capita Income

Estimated Per Capita Income (2019)	\$26,662	\$36,971	\$38,584
Projected Per Capita Income (2024)	\$31,241	\$44,597	\$45,980
Estimated Per Capita Income 5 Year Growth	\$4,579 17.2%	\$7,626 20.6%	\$7,397 19.2%
Estimated Average Household Net Worth (2019)	\$618,711	\$758,890	\$754,053

Daytime Demos (2019)

Total Businesses	17	114	751
Total Employees	366	1,203	7,888
Company Headquarter Businesses	-	-	7 1.0%
Company Headquarter Employees	-	1 -	247 3.1%
Employee Population per Business	21.9	10.5	10.5
Residential Population per Business	10.9	57.3	32.3

This report was produced using data from private and government sources deemed to be reliable. The information herein is provided without representation or warranty.

EXPANDED PROFILE

2000-2010 Census, 2019 Estimates with 2024 Projections

Calculated using Weighted Block Centroid from Block Groups

Lat/Lon: 40.3557/-76.9858

RF5

1548 State Road

Duncannon, PA 17020

Race & Ethnicity

	1 mi radius		3 mi radius		5 mi radius	
White (2019)	172	94.5%	6,186	94.3%	22,113	91.0%
Black or African American (2019)	5	2.5%	166	2.5%	680	2.8%
American Indian or Alaska Native (2019)	-	-	7	0.1%	36	0.1%
Asian (2019)	-	-	47	0.7%	820	3.4%
Hawaiian or Pacific Islander (2019)	-	-	5	-	8	-
Other Race (2019)	2	1.1%	35	0.5%	190	0.8%
Two or More Races (2019)	3	1.5%	112	1.7%	449	1.8%
Not Hispanic or Latino Population (2019)	175	96.1%	6,360	97.0%	23,550	96.9%
Hispanic or Latino Population (2019)	7	3.9%	197	3.0%	746	3.1%
Not Hispanic or Latino Population (2024)	176	95.8%	6,323	96.8%	23,963	96.8%
Hispanic or Latino Population (2024)	8	4.2%	211	3.2%	792	3.2%
Not Hispanic or Latino Population (2010)	171	98.0%	6,406	98.5%	23,187	98.2%
Hispanic or Latino Population (2010)	4	2.0%	98	1.5%	421	1.8%
Not Hispanic or Latino Population (2000)	167	99.5%	6,145	99.6%	20,274	99.1%
Hispanic or Latino Population (2000)	-	-	27	0.4%	174	0.9%
Projected Hispanic Annual Growth (2019 to 2024)	-	1.7%	15	1.5%	45	1.2%
Historic Hispanic Annual Growth (2000 to 2019)	6	36.9%	170	33.5%	572	17.3%

Age Distribution (2019)

Age Under 5	11	5.9%	347	5.3%	1,373	5.6%
Age 5 to 9 Years	8	4.5%	313	4.8%	1,350	5.6%
Age 10 to 14 Years	9	4.7%	302	4.6%	1,339	5.5%
Age 15 to 19 Years	7	4.0%	318	4.8%	1,412	5.8%
Age 20 to 24 Years	9	4.8%	290	4.4%	1,242	5.1%
Age 25 to 29 Years	13	7.1%	382	5.8%	1,529	6.3%
Age 30 to 34 Years	11	6.1%	398	6.1%	1,614	6.6%
Age 35 to 39 Years	10	5.7%	402	6.1%	1,712	7.0%
Age 40 to 44 Years	9	4.9%	360	5.5%	1,486	6.1%
Age 45 to 49 Years	11	6.0%	423	6.4%	1,616	6.7%
Age 50 to 54 Years	13	7.1%	522	8.0%	1,705	7.0%
Age 55 to 59 Years	13	7.1%	563	8.6%	1,912	7.9%
Age 60 to 64 Years	13	7.4%	553	8.4%	1,808	7.4%
Age 65 to 74 Years	20	11.1%	834	12.7%	2,540	10.5%
Age 75 to 84 Years	14	7.6%	383	5.8%	1,232	5.1%
Age 85 Years or Over	11	5.9%	166	2.5%	428	1.8%
Median Age	45.8		45.8		41.3	

Gender Age Distribution (2019)

Female Population	97	53.0%	3,338	50.9%	12,337	50.8%
Age 0 to 19 Years	17	17.3%	635	19.0%	2,692	21.8%
Age 20 to 64 Years	50	51.9%	1,928	57.8%	7,316	59.3%
Age 65 Years or Over	30	30.8%	775	23.2%	2,329	18.9%
Female Median Age	48.9		46.8		42.0	
Male Population	85	47.0%	3,219	49.1%	11,959	49.2%
Age 0 to 19 Years	18	21.3%	646	20.1%	2,781	23.3%
Age 20 to 64 Years	52	61.1%	1,966	61.1%	7,307	61.1%
Age 65 Years or Over	15	17.6%	608	18.9%	1,870	15.6%
Male Median Age	43.1		44.8		40.5	

This report was produced using data from private and government sources deemed to be reliable. The information herein is provided without representation or warranty.

EXPANDED PROFILE

2000-2010 Census, 2019 Estimates with 2024 Projections

Calculated using Weighted Block Centroid from Block Groups

Lat/Lon: 40.3557/-76.9858

RF5

1548 State Road

Duncannon, PA 17020

Household Income Distribution (2019)

	1 mi radius		3 mi radius		5 mi radius	
HH Income \$200,000 or More	3	4.2%	140	5.0%	538	5.2%
HH Income \$150,000 to \$199,999	3	4.0%	227	8.2%	802	7.8%
HH Income \$100,000 to \$149,999	8	11.8%	521	18.7%	1,737	16.9%
HH Income \$75,000 to \$99,999	17	24.3%	525	18.8%	1,827	17.7%
HH Income \$50,000 to \$74,999	16	23.5%	573	20.5%	2,092	20.3%
HH Income \$35,000 to \$49,999	12	17.3%	323	11.6%	1,372	13.3%
HH Income \$25,000 to \$34,999	3	4.3%	197	7.1%	689	6.7%
HH Income \$15,000 to \$24,999	7	10.5%	179	6.4%	781	7.6%
HH Income Under \$15,000	-	-	105	3.7%	465	4.5%
HH Income \$35,000 or More	60	85.1%	2,309	82.8%	8,369	81.2%
HH Income \$75,000 or More	31	44.3%	1,412	50.6%	4,904	47.6%

Housing (2019)

	1 mi radius		3 mi radius		5 mi radius	
Total Housing Units	75		2,923		10,657	
Housing Units Occupied	70	93.1%	2,790	95.4%	10,303	96.7%
Housing Units Owner-Occupied	56	79.9%	2,354	84.4%	7,871	76.4%
Housing Units, Renter-Occupied	14	20.1%	436	15.6%	2,432	23.6%
Housing Units, Vacant	5	7.4%	133	4.8%	353	3.4%

Marital Status (2019)

	1 mi radius		3 mi radius		5 mi radius	
Never Married	36	23.3%	1,419	25.4%	5,486	27.1%
Currently Married	76	49.3%	2,929	52.3%	10,565	52.2%
Separated	12	8.0%	206	3.7%	635	3.1%
Widowed	15	10.0%	462	8.3%	1,371	6.8%
Divorced	15	9.5%	578	10.3%	2,177	10.8%

Household Type (2019)

	1 mi radius		3 mi radius		5 mi radius	
Population Family	142	78.0%	5,435	82.9%	19,668	81.0%
Population Non-Family	28	15.1%	1,043	15.9%	4,232	17.4%
Population Group Quarters	13	6.9%	79	1.2%	396	1.6%
Family Households	49	69.8%	1,934	69.3%	6,782	65.8%
Non-Family Households	21	30.2%	856	30.7%	3,521	34.2%
Married Couple with Children	14	17.8%	530	18.1%	2,048	19.4%
Average Family Household Size	2.9		2.8		2.9	

Household Size (2019)

	1 mi radius		3 mi radius		5 mi radius	
1 Person Households	17	23.7%	699	25.1%	2,920	28.3%
2 Person Households	29	41.6%	1,187	42.5%	3,905	37.9%
3 Person Households	10	14.1%	423	15.1%	1,530	14.8%
4 Person Households	10	14.1%	308	11.0%	1,276	12.4%
5 Person Households	2	2.9%	120	4.3%	477	4.6%
6 or More Person Households	3	3.7%	53	1.9%	196	1.9%

Household Vehicles (2019)

	1 mi radius		3 mi radius		5 mi radius	
Households with 0 Vehicles Available	2	2.3%	77	2.8%	321	3.1%
Households with 1 Vehicles Available	19	26.6%	720	25.8%	3,008	29.2%
Households with 2 or More Vehicles Available	50	71.0%	1,992	71.4%	6,974	67.7%
Total Vehicles Available	141		5,852		20,122	
Average Vehicles Per Household	2.0		2.1		2.0	

This report was produced using data from private and government sources deemed to be reliable. The information herein is provided without representation or warranty.

EXPANDED PROFILE

2000-2010 Census, 2019 Estimates with 2024 Projections

Calculated using Weighted Block Centroid from Block Groups

Lat/Lon: 40.3557/-76.9858

RF5

1548 State Road

Duncannon, PA 17020

Labor Force (2019)

	1 mi radius		3 mi radius		5 mi radius	
Estimated Labor Population Age 16 Years or Over	153		5,527		20,022	
Estimated Civilian Employed	93	61.0%	3,666	66.3%	12,890	64.4%
Estimated Civilian Unemployed	3	2.0%	73	1.3%	303	1.5%
Estimated in Armed Forces	3	2.1%	60	1.1%	74	0.4%
Estimated Not in Labor Force	53	34.9%	1,728	31.3%	6,755	33.7%
Unemployment Rate	2.0%		1.3%		1.5%	

Occupation (2019)

	1 mi radius		3 mi radius		5 mi radius	
Occupation: Population Age 16 Years or Over	93		3,666		12,890	
Management, Business, Financial Operations	16	17.4%	517	14.1%	2,012	15.6%
Professional, Related	8	8.8%	711	19.4%	2,857	22.2%
Service	13	13.5%	493	13.4%	1,838	14.3%
Sales, Office	28	29.5%	1,002	27.3%	3,532	27.4%
Farming, Fishing, Forestry	-	-	26	0.7%	40	0.3%
Construct, Extraction, Maintenance	9	10.1%	352	9.6%	973	7.5%
Production, Transport Material Moving	19	20.6%	565	15.4%	1,639	12.7%
White Collar Workers	52	55.8%	2,230	60.8%	8,400	65.2%
Blue Collar Workers	41	44.2%	1,436	39.2%	4,490	34.8%

Consumer Expenditure (2019)

	1 mi radius		3 mi radius		5 mi radius	
Total Household Expenditure	\$3.79 M		\$178.72 M		\$676.92 M	
Total Non-Retail Expenditure	\$1.99 M	52.5%	\$93.89 M	52.5%	\$356.28 M	52.6%
Total Retail Expenditure	\$1.8 M	47.5%	\$84.83 M	47.5%	\$320.64 M	47.4%
Apparel	\$130.63 K	3.4%	\$6.23 M	3.5%	\$23.72 M	3.5%
Contributions	\$121.38 K	3.2%	\$5.85 M	3.3%	\$22.17 M	3.3%
Education	\$100.82 K	2.7%	\$5.1 M	2.9%	\$19.74 M	2.9%
Entertainment	\$212.46 K	5.6%	\$10.18 M	5.7%	\$38.5 M	5.7%
Food and Beverages	\$559.91 K	14.8%	\$26.3 M	14.7%	\$99.57 M	14.7%
Furnishings and Equipment	\$132.86 K	3.5%	\$6.34 M	3.5%	\$23.96 M	3.5%
Gifts	\$90.77 K	2.4%	\$4.29 M	2.4%	\$16.46 M	2.4%
Health Care	\$331.82 K	8.8%	\$15.44 M	8.6%	\$57.88 M	8.6%
Household Operations	\$147.34 K	3.9%	\$7.02 M	3.9%	\$26.59 M	3.9%
Miscellaneous Expenses	\$71.71 K	1.9%	\$3.39 M	1.9%	\$12.84 M	1.9%
Personal Care	\$50.77 K	1.3%	\$2.4 M	1.3%	\$9.1 M	1.3%
Personal Insurance	\$26.27 K	0.7%	\$1.28 M	0.7%	\$4.83 M	0.7%
Reading	\$8.3 K	0.2%	\$393.3 K	0.2%	\$1.48 M	0.2%
Shelter	\$790.1 K	20.9%	\$37.24 M	20.8%	\$141.71 M	20.9%
Tobacco	\$23.98 K	0.6%	\$1.07 M	0.6%	\$4.05 M	0.6%
Transportation	\$700.46 K	18.5%	\$32.95 M	18.4%	\$124.37 M	18.4%
Utilities	\$287.46 K	7.6%	\$13.24 M	7.4%	\$49.97 M	7.4%

Educational Attainment (2019)

	1 mi radius		3 mi radius		5 mi radius	
Adult Population Age 25 Years or Over	138		4,987		17,581	
Elementary (Grade Level 0 to 8)	3	1.9%	80	1.6%	290	1.6%
Some High School (Grade Level 9 to 11)	17	12.6%	375	7.5%	1,217	6.9%
High School Graduate	61	44.0%	2,111	42.3%	6,673	38.0%
Some College	33	23.9%	921	18.5%	3,073	17.5%
Associate Degree Only	6	4.6%	421	8.4%	1,474	8.4%
Bachelor Degree Only	11	7.7%	718	14.4%	3,013	17.1%
Graduate Degree	7	5.2%	361	7.2%	1,840	10.5%

This report was produced using data from private and government sources deemed to be reliable. The information herein is provided without representation or warranty.

EXPANDED PROFILE

2000-2010 Census, 2019 Estimates with 2024 Projections

Calculated using Weighted Block Centroid from Block Groups

Lat/Lon: 40.3557/-76.9858

RF5

1548 State Road

Duncannon, PA 17020

Units In Structure (2019)

	1 mi radius		3 mi radius		5 mi radius	
1 Detached Unit	57	88.9%	2,276	86.4%	7,153	74.3%
1 Attached Unit	2	3.0%	169	6.4%	1,382	14.4%
2 to 4 Units	7	10.7%	126	4.8%	582	6.0%
5 to 9 Units	-	-	29	1.1%	579	6.0%
10 to 19 Units	-	-	14	0.5%	153	1.6%
20 to 49 Units	-	-	17	0.6%	111	1.2%
50 or More Units	1	2.3%	11	0.4%	39	0.4%
Mobile Home or Trailer	3	4.3%	147	5.6%	302	3.1%
Other Structure	-	-	-	-	2	-

Homes Built By Year (2019)

Homes Built 2010 or later	2	2.6%	39	1.5%	464	4.8%
Homes Built 2000 to 2009	9	14.6%	394	15.0%	1,548	16.1%
Homes Built 1990 to 1999	9	13.6%	252	9.6%	1,048	10.9%
Homes Built 1980 to 1989	10	15.4%	483	18.3%	1,260	13.1%
Homes Built 1970 to 1979	10	15.2%	450	17.1%	1,739	18.1%
Homes Built 1960 to 1969	3	4.5%	224	8.5%	826	8.6%
Homes Built 1950 to 1959	11	17.0%	253	9.6%	1,172	12.2%
Homes Built Before 1949	17	26.6%	694	26.3%	2,247	23.3%

Home Values (2019)

Home Values \$1,000,000 or More	-	-	-	-	16	0.2%
Home Values \$500,000 to \$999,999	-	-	17	0.8%	374	5.1%
Home Values \$400,000 to \$499,999	2	2.9%	52	2.3%	281	3.8%
Home Values \$300,000 to \$399,999	6	10.7%	205	9.3%	620	8.4%
Home Values \$200,000 to \$299,999	10	18.6%	565	25.5%	1,892	25.7%
Home Values \$150,000 to \$199,999	18	34.0%	721	32.5%	1,957	26.6%
Home Values \$100,000 to \$149,999	8	15.7%	394	17.7%	1,636	22.2%
Home Values \$70,000 to \$99,999	7	13.8%	180	8.1%	597	8.1%
Home Values \$50,000 to \$69,999	3	6.6%	73	3.3%	174	2.4%
Home Values \$25,000 to \$49,999	-	-	54	2.4%	100	1.4%
Home Values Under \$25,000	2	4.0%	91	4.1%	214	2.9%
Owner-Occupied Median Home Value	\$166,279		\$177,072		\$197,290	
Renter-Occupied Median Rent	\$573		\$654		\$696	

Transportation To Work (2019)

Drive to Work Alone	83	91.5%	2,870	87.7%	10,585	86.7%
Drive to Work in Carpool	6	6.5%	236	7.2%	910	7.5%
Travel to Work by Public Transportation	-	-	10	0.3%	51	0.4%
Drive to Work on Motorcycle	-	-	2	-	4	-
Walk or Bicycle to Work	-	-	30	0.9%	196	1.6%
Other Means	-	-	11	0.3%	47	0.4%
Work at Home	2	2.0%	112	3.4%	412	3.4%

Travel Time (2019)

Travel to Work in 14 Minutes or Less	18	19.6%	498	15.2%	2,441	20.0%
Travel to Work in 15 to 29 Minutes	26	28.4%	1,633	49.9%	6,134	50.3%
Travel to Work in 30 to 59 Minutes	40	44.7%	1,189	36.3%	3,050	25.0%
Travel to Work in 60 Minutes or More	8	8.7%	218	6.7%	824	6.8%
Average Minutes Travel to Work	29.5		25.6		22.4	

This report was produced using data from private and government sources deemed to be reliable. The information herein is provided without representation or warranty.