

FOR LEASE
4 Bay Auto Repair Building with 8,000 SF of Land
for Parking

3325 W. Chicago Ave.
Chicago, IL 60651



- Auto repair building with four drive-in doors.
- Rare corner location.
- ±8,000 square feet of surrounding land for parking and storage.
- Across the street from busy Chicago Kedzie Plaza.

| | |
|------------------------|--------------------------|
| LEASE PRICE: | \$4,500 Monthly |
| LEASE TYPE: | Modified Gross |
| BUILDING SF: | ±3,300 |
| LANDSITE SF: | ±11,300 |
| ZONING: | C1-2 |
| DRIVE-IN DOORS: | Four total – 12' Tall |

CONTACT Deborah Smith
773 736 3600 Office
773 885 3254 Mobile
deborah@straussrealty.com

STRAUSS
REALTY, LTD.

3325 W. Chicago Ave.
Chicago, IL 60651

Interior

4 BAY AUTO REPAIR SPACE FOR LEASE



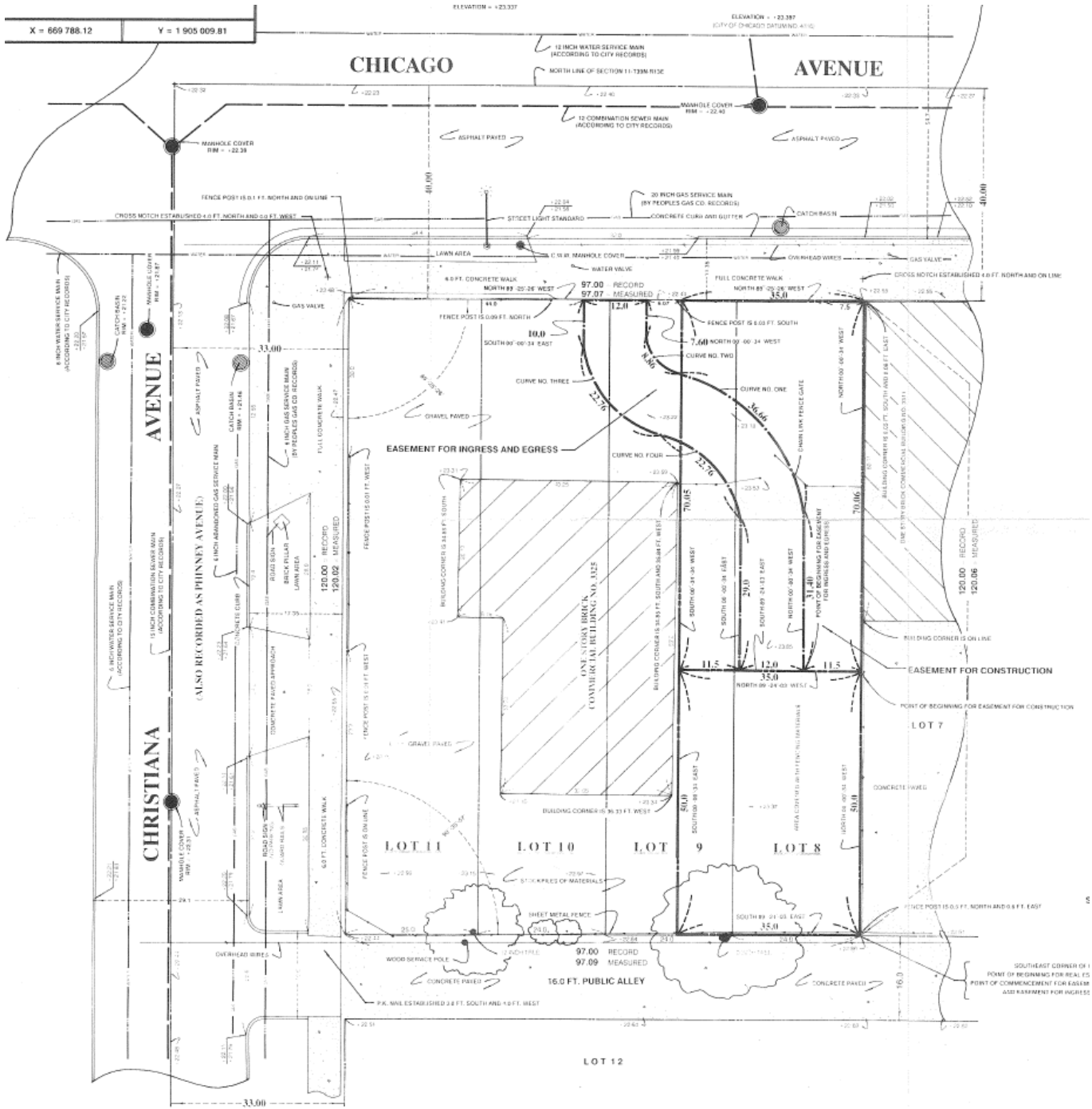
CONTACT Deborah Smith
773 736 3600 Office
773 885 3254 Mobile
deborah@straussrealty.com

STRAUSS
REALTY, LTD.

This information has been obtained from sources believed reliable but has not been verified for accuracy or completeness. You should conduct a careful, independent investigation of the property and verify all information. Any reliance on this information is solely at your own risk. All other marks displayed on this document are the property of their respective owners, and the use of such logos does not imply any affiliation with or endorsement of Strauss Realty, Ltd.

Survey

3325 W. Chicago Ave.
Chicago, IL 60651



CONTACT

Deborah Smith
773 736 3600 Office
773 885 3254 Mobile
deborah@straussrealty.com

