

1051 S. EAST ST., UNIT B, ANAHEIM, CA

19,334 SF For Sublease



Scott Seal

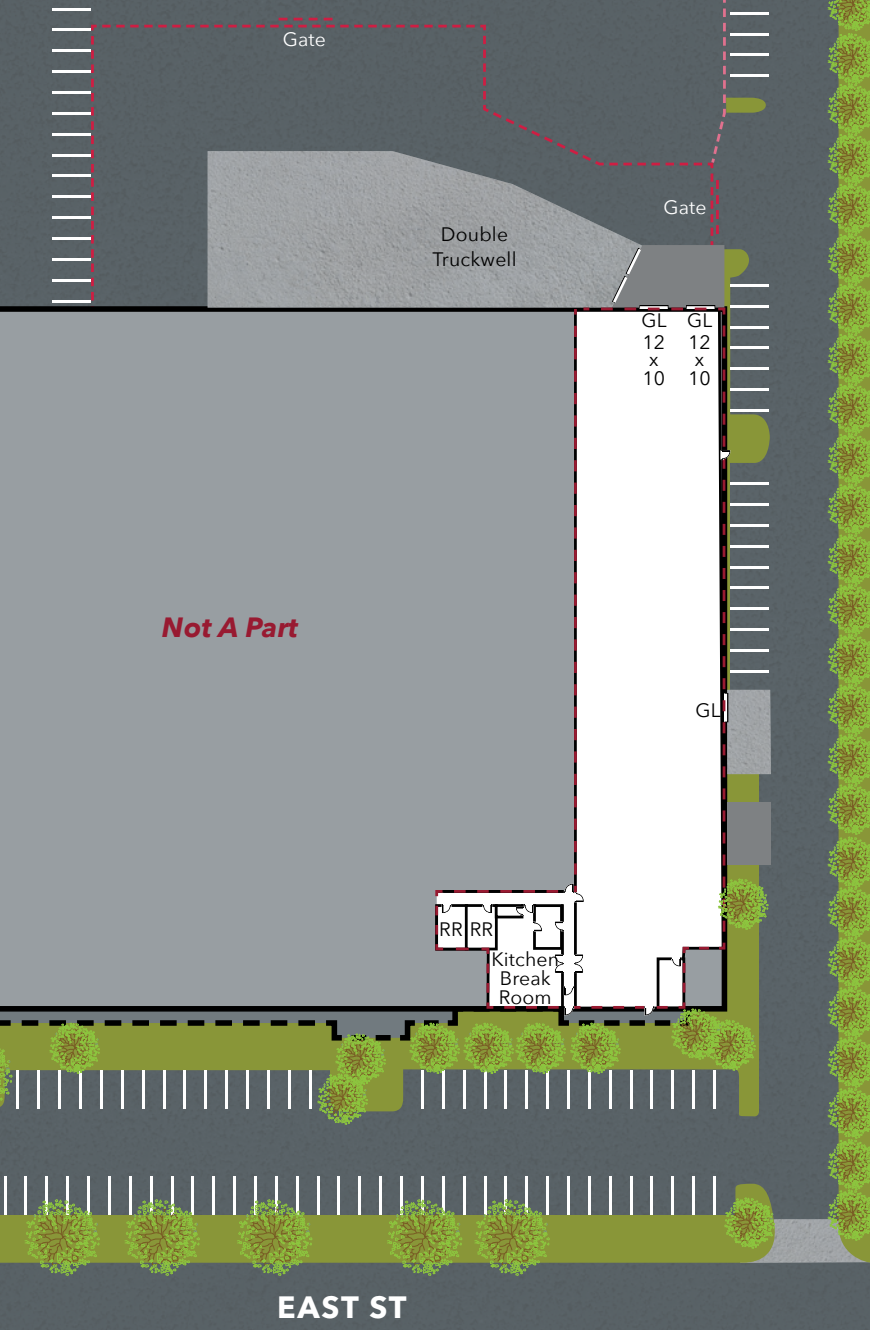
Principal | Lee & Associates - Orange

C: 949.278.2975

sseal@lee-associates.com

DRE# 01412407

 **LEE &
ASSOCIATES**
COMMERCIAL REAL ESTATE SERVICES



BUILDING FEATURES

- 19,334 SF
- 2,076 SF of newly refurbished office
- 20' Clear
- Excellent Truck Access
- 3 GL doors
- 2 Truckwell Loading Positions
- Fenced Yard
- 2:1 Parking
- Shop Office
- Insulated Warehouse Ceilings
- A Portion of Warehouse has Racking in-place
- 24 month Sublease term Available
- Gross Lease - No NNN expenses
- Hi-Image and Professionally Managed Facility
- Immediate 57, 5, 91 & 22 Freeway Access
- Available November 1, 2023

Scott Seal

Principal | Lee & Associates - Orange
 C: 949.278.2975
 sseal@lee-associates.com
 DRE# 01412407

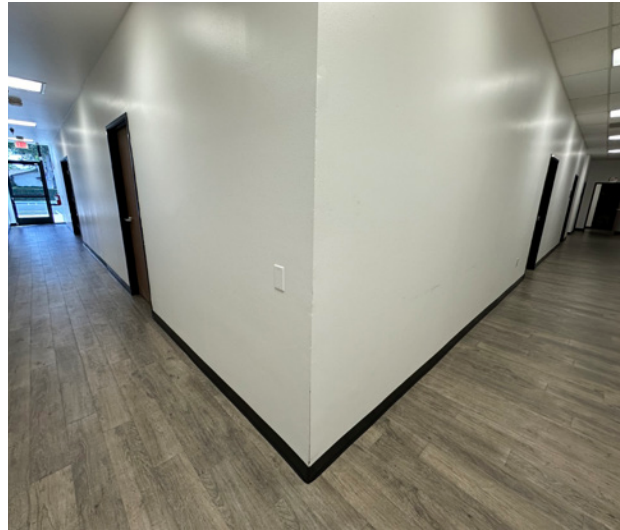
All information contained herein has been provided by Seller/ Lessor and/or third parties, but has not been independently verified by Lee & Associates or its agent(s). Buyer/Lessee and interested parties should independently verify all information communicated by these sources.



PHOTOS

1051 S. EAST ST., UNIT B, ANAHEIM, CA

19,334 SF For Sublease



Scott Seal

Principal | Lee & Associates - Orange

C: 949.278.2975

sseal@lee-associates.com

DRE# 01412407