

**NEW OFFICE/WAREHOUSE SPACE  
FOR LEASE**

501 E. Little Creek Road  
Norfolk, VA 23505



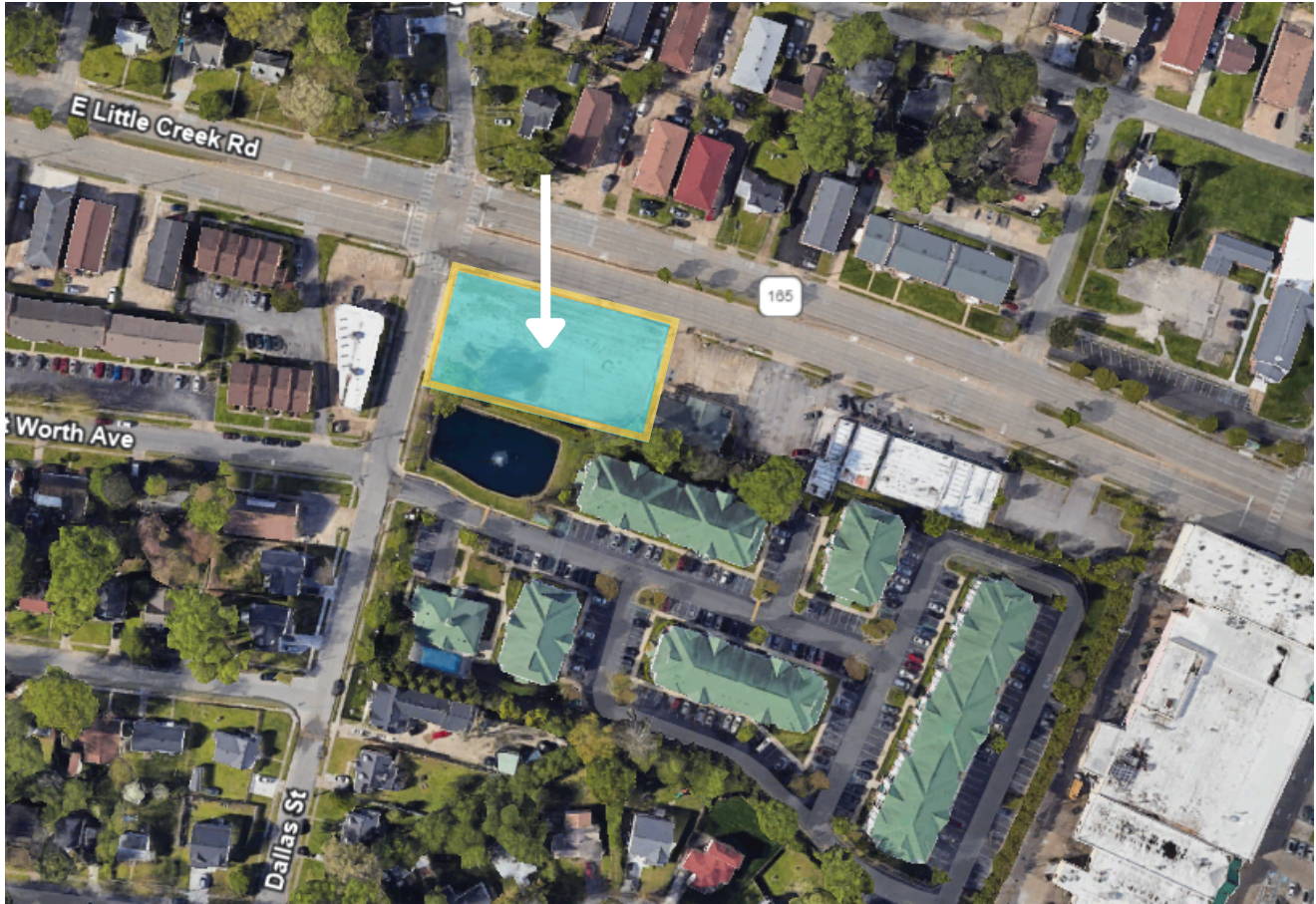
**PYLE REALTY, INC.** | 1055 LASKIN ROAD, SUITE 200, VIRGINIA BEACH, VA 23451  
PYLEREALTY.COM

# 501 E. Little Creek Road

Norfolk, VA 23505



## PROPERTY OVERVIEW



## OFFERING SUMMARY

**Available SF:** Appx. 1,852 SF

**Lease Rate:** \$2,500.00/mo  
+ Landscaping,  
Water, Dumpster  
(\$240.00/mo)

**Building Size:** 9,262 SF

## PROPERTY HIGHLIGHTS

- Available November 2024
- Excellent Condition
- Glass Storefront/Entry
- 10' x 10' Overhead Door
- 21' x 22' Office/Bathroom

Brand New Office/Warehouse flex space. Conveniently located at the intersection of I-64 and E. Little Creek Rd. Approximately 24K + cars daily.

**PYLE REALTY, INC.** | 1055 LASKIN ROAD, SUITE 200, VIRGINIA BEACH, VA 23451 | PYLEREALTY.COM

**DAVID PYLE**  
757.409.6525  
DPYLE@PYLEREALTY.COM

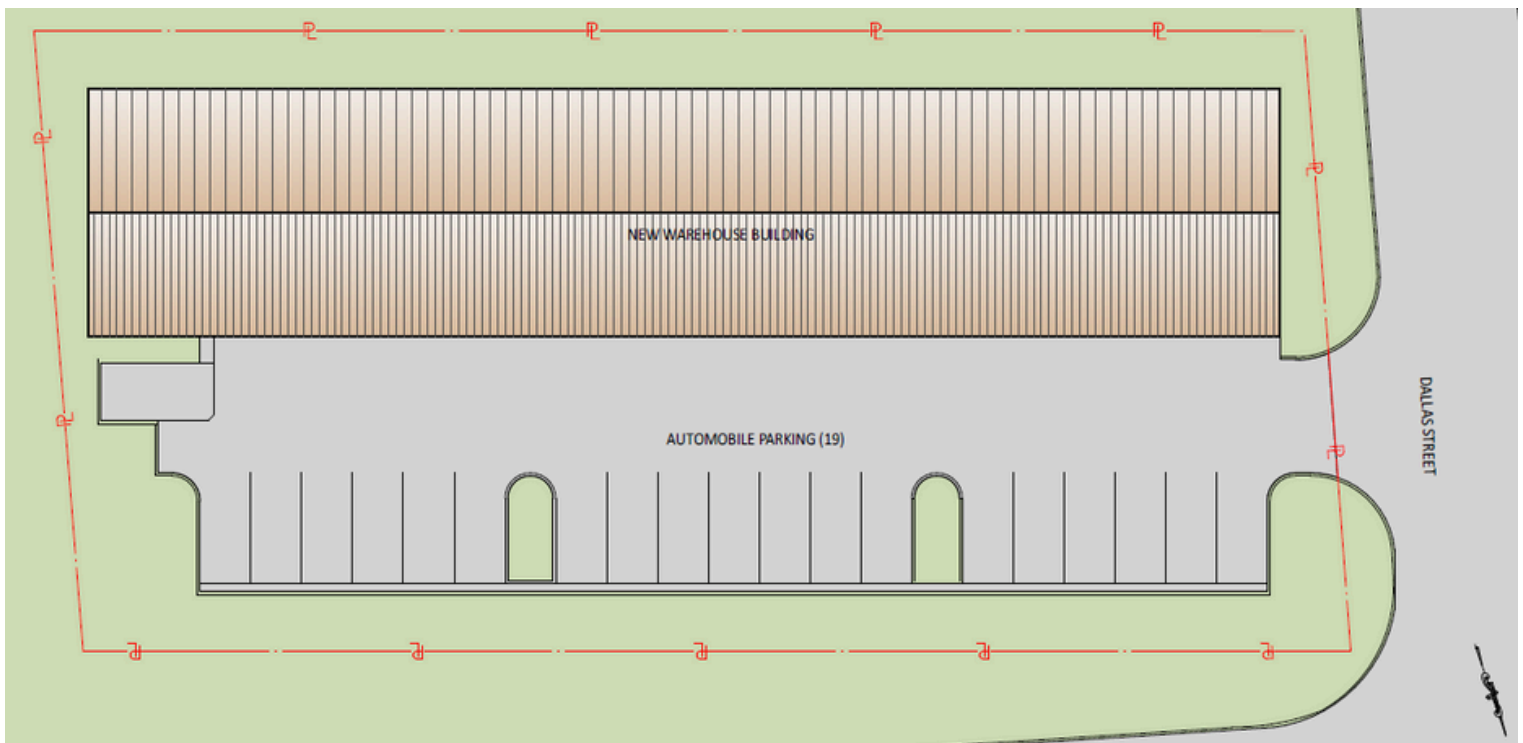
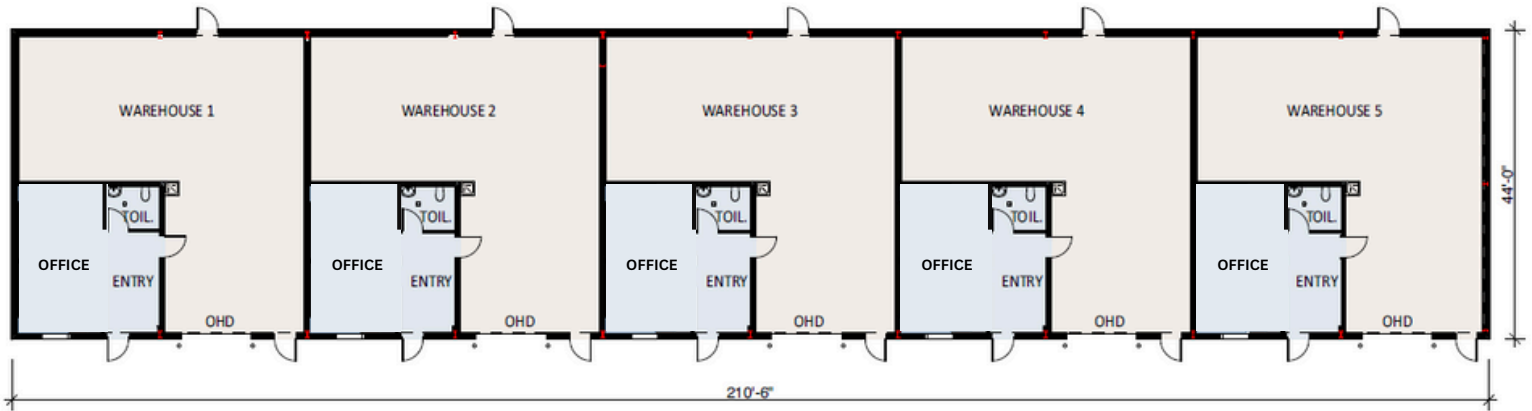
**ALLEN PYLE**  
757.491.1600  
APYLE@PYLEREALTY.COM

# 501 E. Little Creek Road

Norfolk, VA 23505



## SITE / FLOOR PLAN



**PYLE REALTY, INC.** | 1055 LASKIN ROAD, SUITE 200, VIRGINIA BEACH, VA 23451 | PYLEREALTY.COM

**DAVID PYLE**  
757.409.6525  
DPYLE@PYLEREALTY.COM

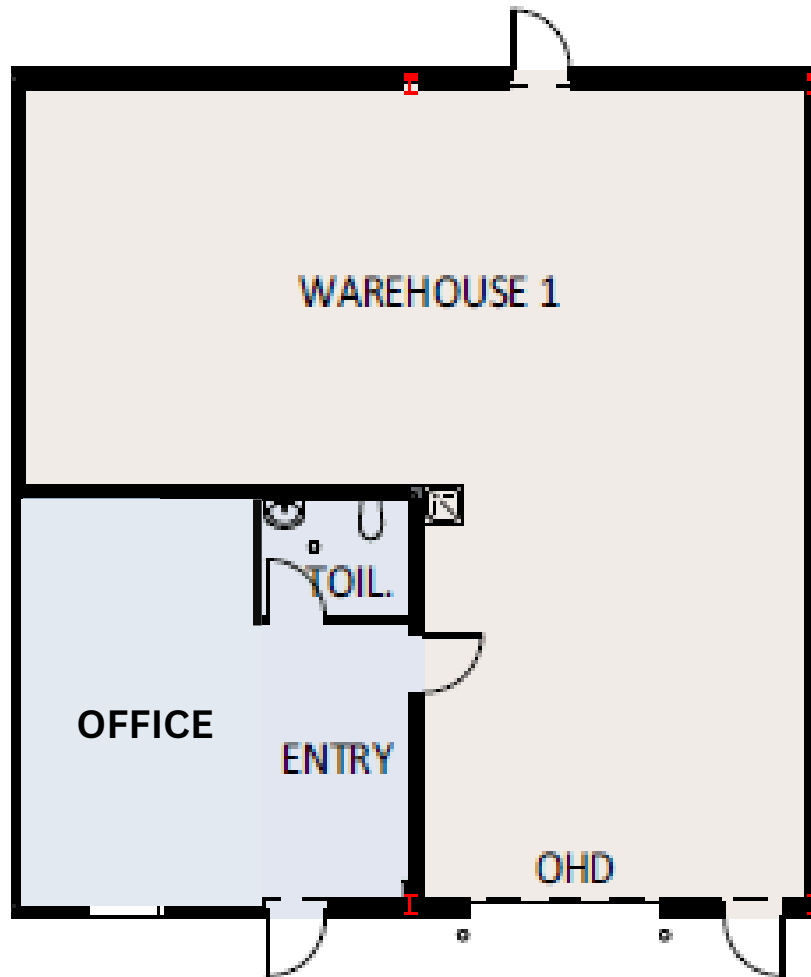
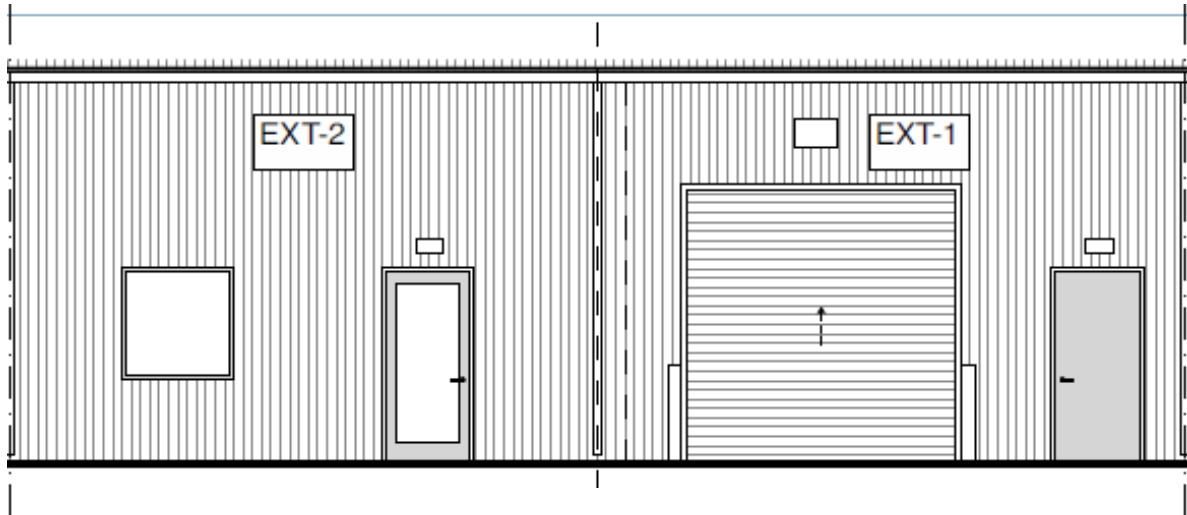
**ALLEN PYLE**  
757.491.1600  
APYLE@PYLEREALTY.COM

# 501 E. Little Creek Road

Norfolk, VA 23505



## SITE / FLOOR PLAN



PYLE REALTY, INC. | 1055 LASKIN ROAD, SUITE 200, VIRGINIA BEACH, VA 23451 | PYLEREALTY.COM

**DAVID PYLE**  
757.409.6525  
DPYLE@PYLEREALTY.COM

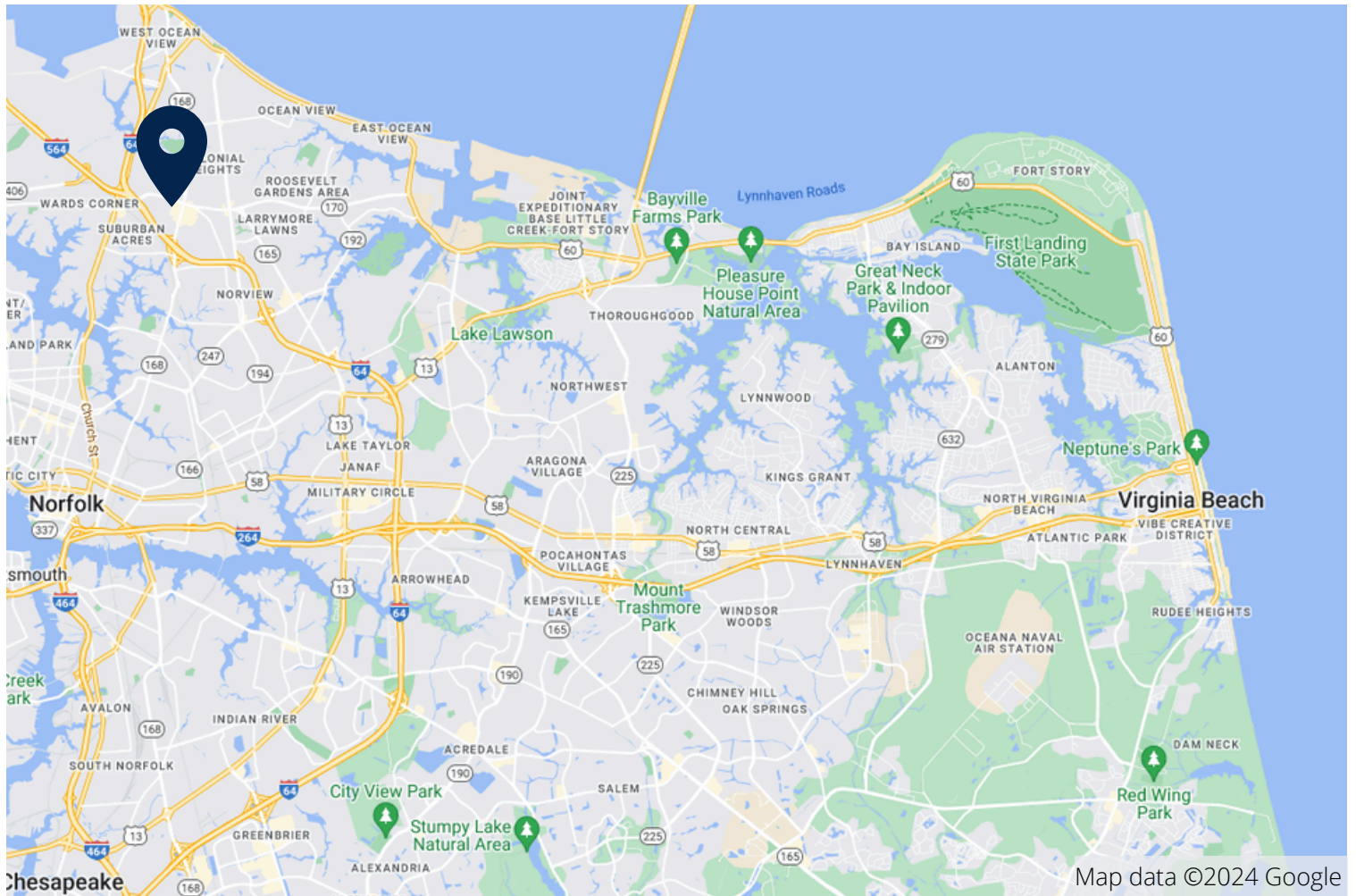
**ALLEN PYLE**  
757.491.1600  
APYLE@PYLEREALTY.COM

# 501 E. Little Creek Road

Norfolk, VA 23505



## MAP AND STATISTICS



# PYLE REALTY

**DAVID PYLE**  
VICE PRESIDENT  
757.409.6525  
DPYLE@PYLREALTY.COM

**ALLEN PYLE**  
PRESIDENT  
757.491.1600  
APYLE@PYLREALTY.COM

## DISCLAIMER:

Although the information contained herein was provided by sources believed to be reliable, Pyle Realty, Inc. makes no representation, expressed or implied, as to its accuracy, and said information is subject to errors, omissions or changes.