

Turn-Key Medical Sublease

680 Lake Shore Dr.

MEDICAL MAN CAVE

Discover a rare opportunity at 680 N Lake Shore Dr - This iconic building offers unparalleled views of Lake Michigan and the city skyline, featuring modern and customizable office spaces designed to inspire productivity and collaboration. With state-of-the-art amenities, including high-speed elevators and concierge services, tenants will experience unmatched comfort and convenience. The property's prime location provides easy access to major transportation hubs and a thriving business community. Discover a fully built out medical space with high-end finishes, spanning 3,400 square feet. This plug-and-play men's health clinic boasts a sophisticated design, creating a welcoming and professional environment for patients. The space offers an ideal layout for medical practitioners seeking a turnkey solution to establish or expand their practice. Elevate patient care in a space that exudes quality and functionality, setting the stage for the next chapter of healthcare excellence.



Lease Rate:
\$47.00 SF/yr (Gross)

Available SF:
3,400

Availability:
Immediate

Building Size:
426,713 SF

Term Remaining:
7 Years

DOUG PAULY | 630.353.1190 | DOUG@JROSSIANDASSOCIATES.COM
ASHLEY GERIN | 708.860.1525 | ASHLEY@JROSSIANDASSOCIATES.COM



REAL ESTATE &
PRACTICE ADVISORY

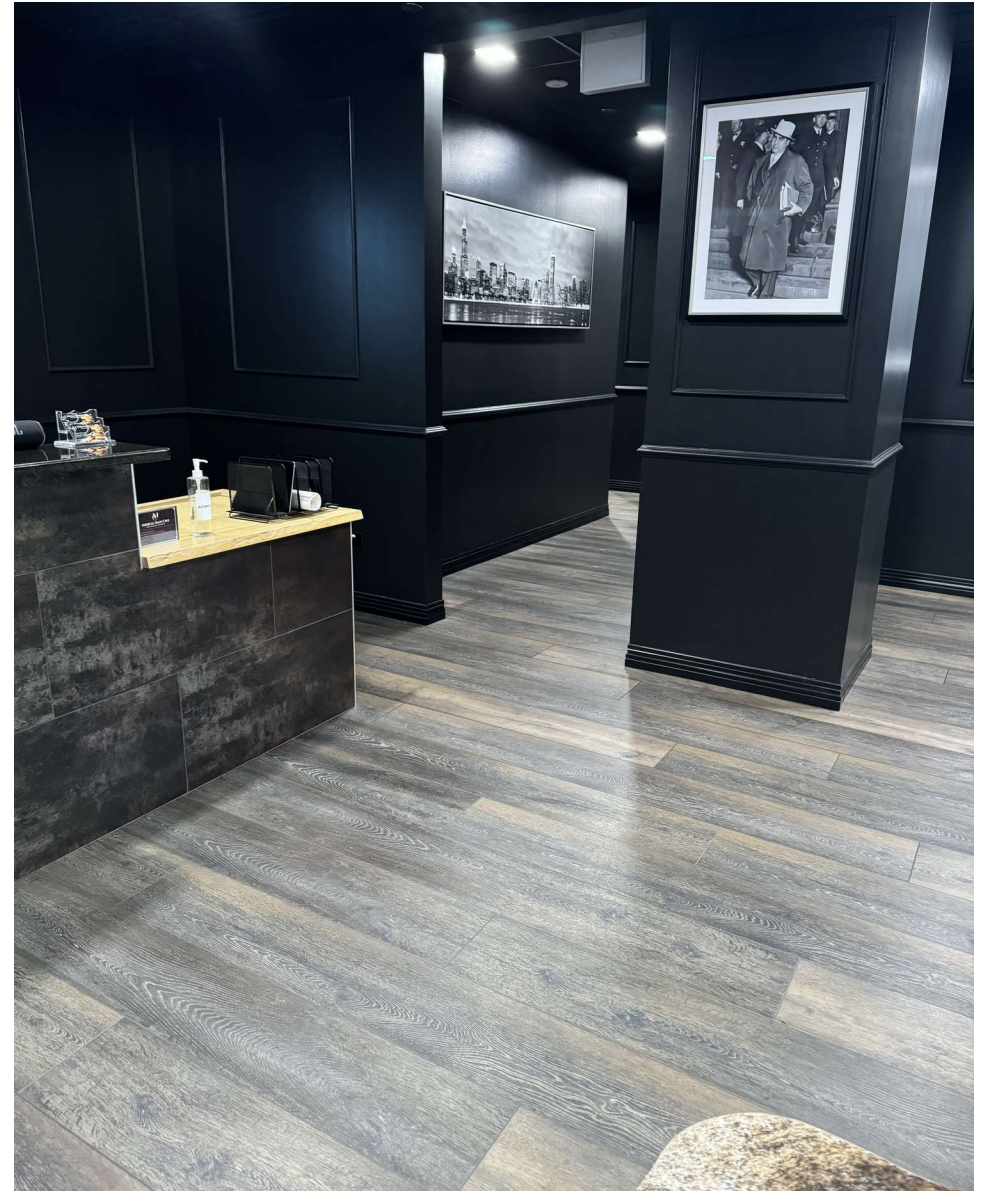
680 N Lake Shore Dr
Chicago, IL

ADDITIONAL PHOTOS



680 N Lake Shore Dr
Chicago, IL

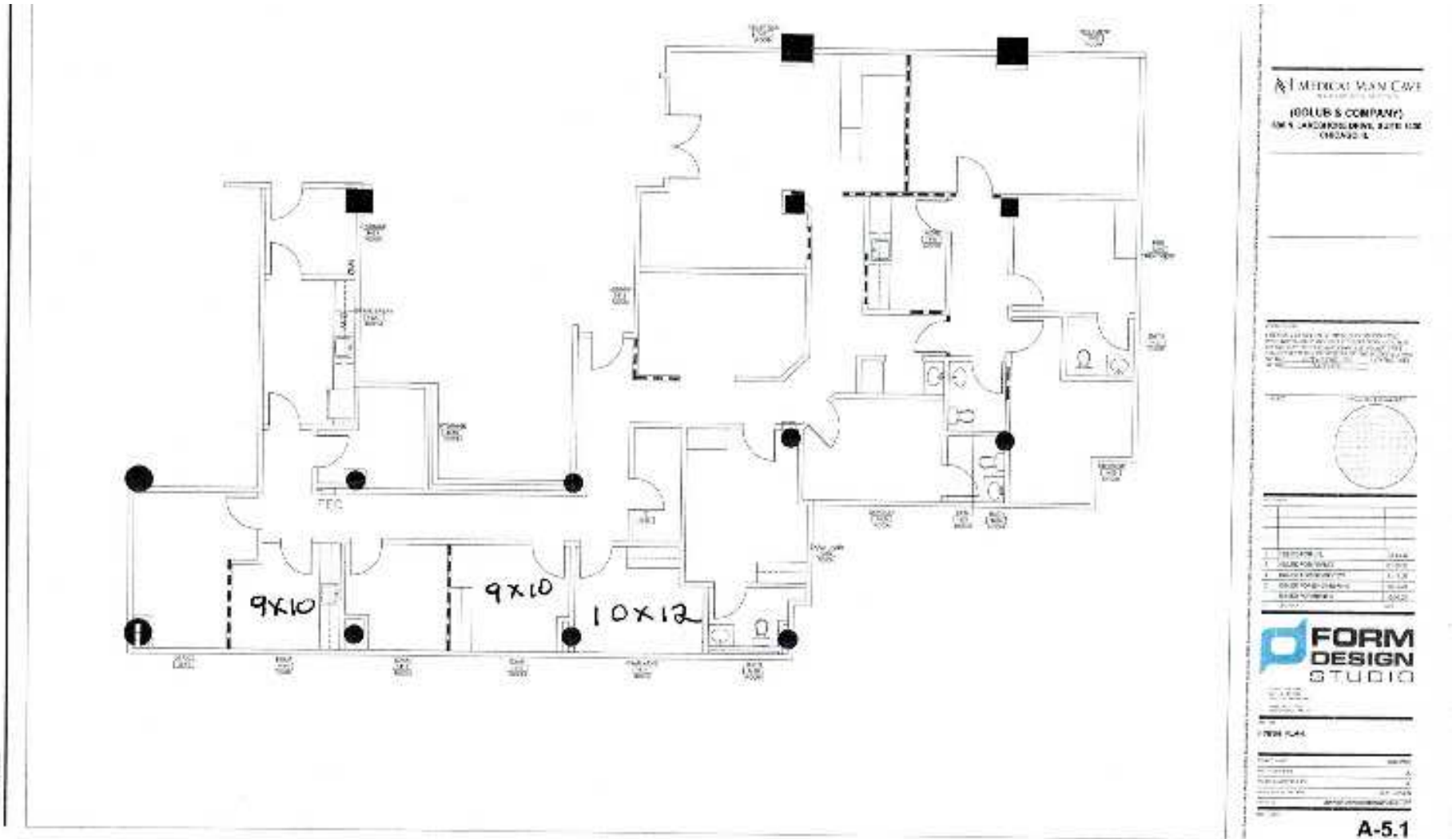
ADDITIONAL PHOTOS



680 N Lake Shore Dr

Chicago, IL

FLOOR PLANS



680 N Lake Shore Dr

Chicago, IL

Population

0.3 MILES

12,755

TOTAL POPULATION

26,103 | 85,429
0.5 MILES | 1 MILE

42

AVERAGE AGE

43 | 42
0.5 MILES | 1 MILE

Households and Income

0.3 MILES

7,962

TOTAL HOUSEHOLDS

16,423 | 54,496
0.5 MILES | 1 MILE

1.6

OF PERSONS PER HH

1.6 | 1.6
0.5 MILES | 1 MILE

0.3 Miles

41

AVERAGE AGE (MALE)

43 | 42
0.5 MILES | 1 MILE

42

AVERAGE AGE (FEMALE)

43 | 43
0.5 MILES | 1 MILE

0.3 Miles

\$182,635

AVERAGE HH INCOME

\$182,868 | \$181,689
0.5 MILES | 1 MILE

\$768,264

AVERAGE HOUSE VALUE

\$804,199 | \$815,035
0.5 MILES | 1 MILE

* Demographic data derived from 2020 ACS - US Census

