

185 Howard Avenue

Bedford Stuyvesant, Brooklyn, NY

Location:

Between Bainbridge Street and Chauncey Street

Floors:

Ground Level: 1,000 SF + 1,000 SF Lower Level

Frontage:

40 FT on Howard Avenue

Ceiling Heights:

10.5 FT

Price:

Upon Request

Highlights:

- Former restaurant space on a busy block on Howard Avenue with strong foot traffic
- 40 FT of frontage gives great exposure on Howard Avenue
- Located 4 blocks from A C train stop on Ralph Avenue and 5 blocks away from J train stop on Halsey Street
- Currently the retail includes all glass frontage, prep area, grease trap, two bathrooms, basement storage and HVAC
- All uses considered



Neighboring Tenants:



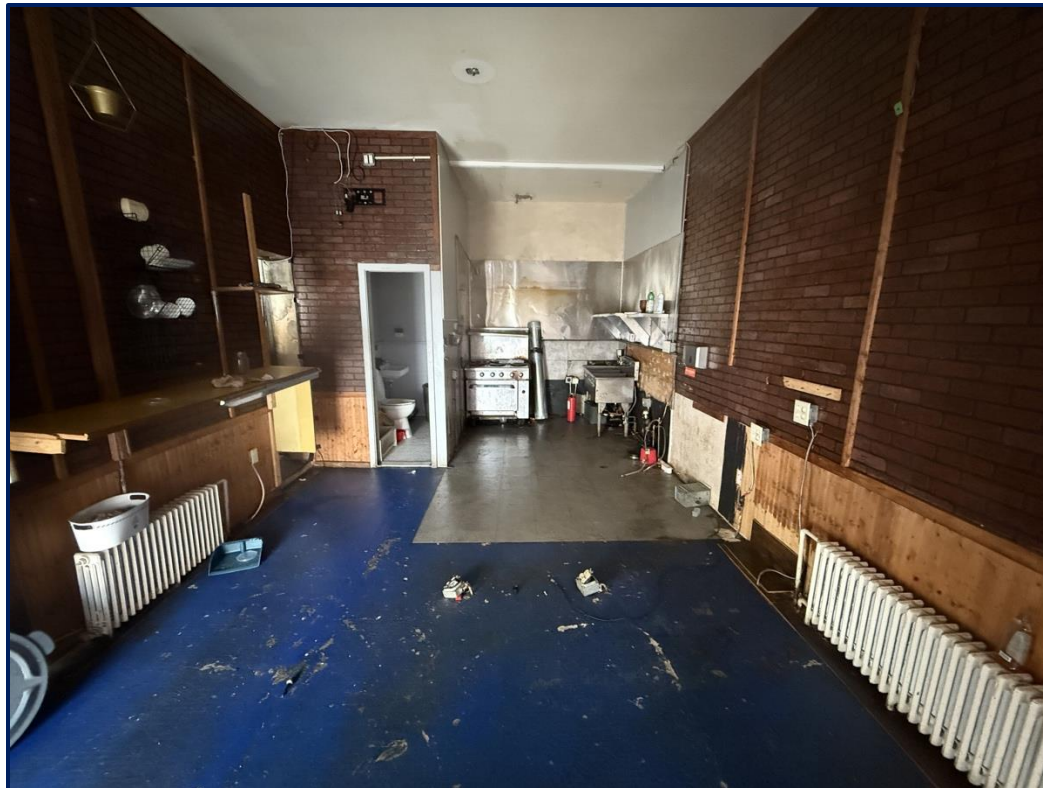
Contact Olmsted Leasing Team



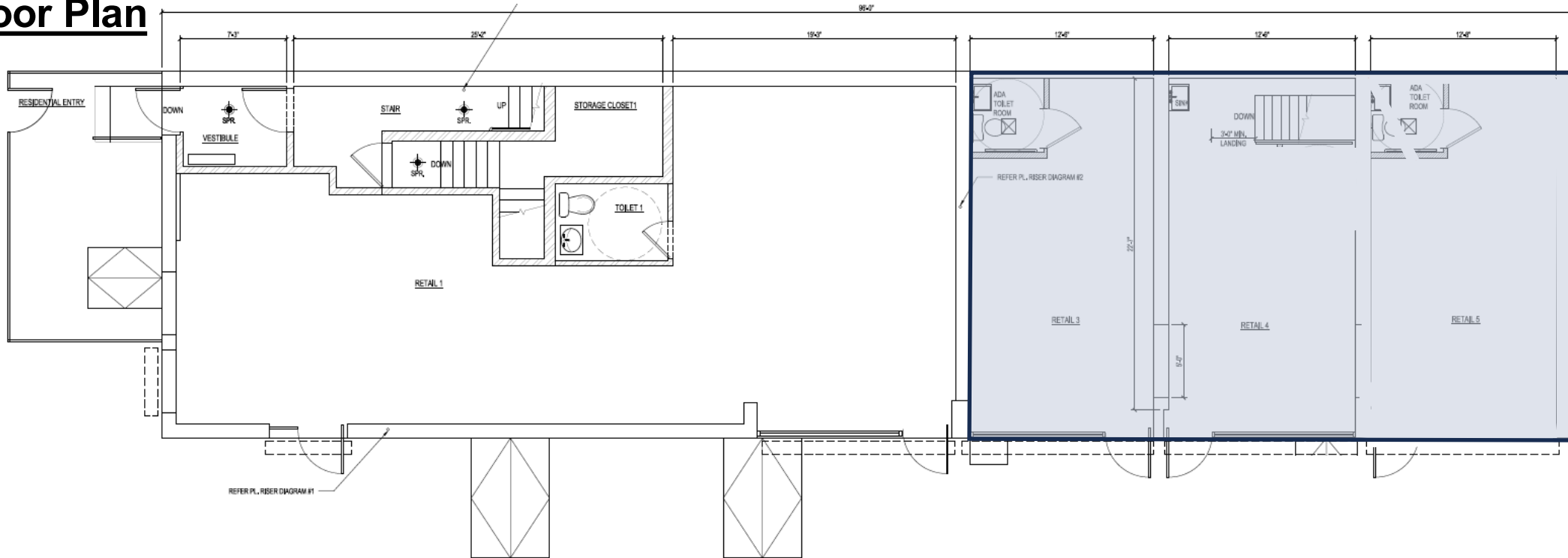
Harrison Balisky
516-672-4493
hb@olmstedre.com

Brad Krosser
862-368-7271
bk@olmstedre.com

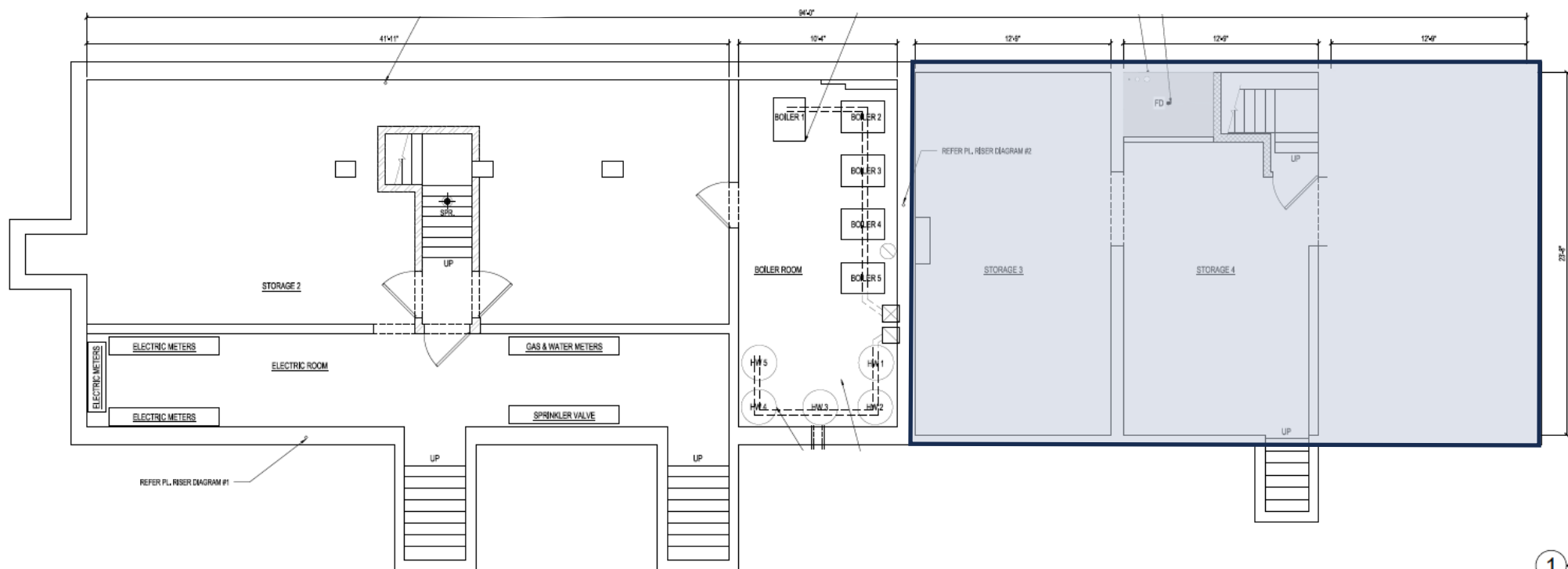
Photos



Floor Plan



2 FIRST FLOOR PLAN
SCALE: 1/4" = 1'-0"



1 CELLAR PLAN
SCALE: 1/4" = 1'-0"

Public Transportation Map

Annual Subway Ridership

A C trains are 7 min away from **Ralph Avenue** station with 1,073,687 annual ridership

J trains are 10 min away from **Halsey Street** station with 1,713,746 annual ridership

