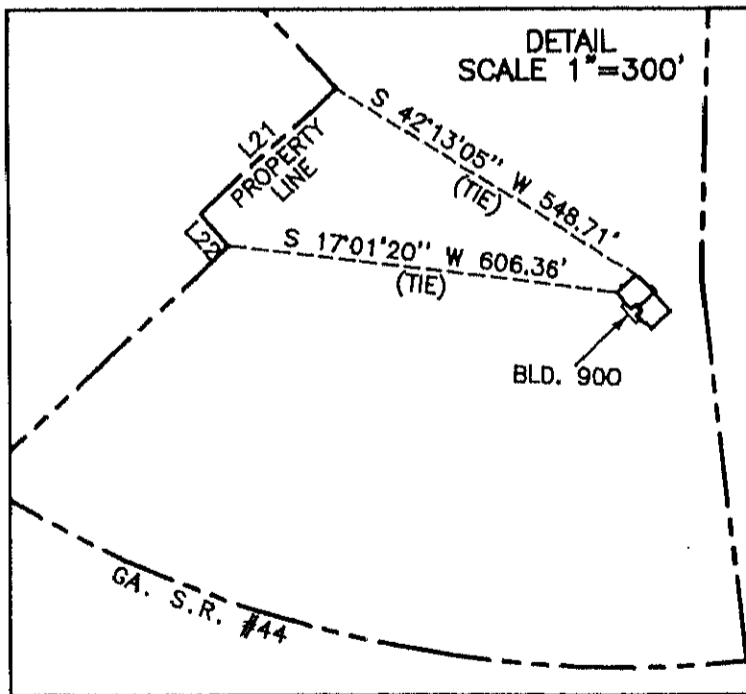


BUILDING 900-A LEGAL DESCRIPTION

Commencing at the centerline centerline intersection of Lakeview Drive and Georgia S.R. #44; thence S30°08'49"W, a distance of 1,356.96'; thence S58°14'43"W, a distance of 38.10' to the POINT OF BEGINNING; thence S31°45'17"E, a distance of 31.75'; thence S58°14'43"W, a distance of 4.10'; thence S31°45'17"E, a distance of 9.65'; thence S58°14'43"W, a distance of 4.30'; thence S31°45'17"E, a distance of 1.40'; thence S58°14'43"W, a distance of 7.50'; thence S31°45'17"E, a distance of 0.65'; thence S58°14'43"W, a distance of 2.00'; thence N31°45'17"W, a distance of 0.65'; thence S58°14'43"W, a distance of 7.70'; thence N31°45'17"W, a distance of 2.00'; thence S58°14'43"W, a distance of 12.50'; thence N31°45'17"W, a distance of 40.80'; thence N58°14'43"E, a distance of 38.10' to the POINT OF BEGINNING.
Containing 1,556 square feet or 0.04 acres.

LEGEND	
	- LIGHT POLE
	- HVAC UNIT

LINE	DIRECTION	DISTANCE
L1	S 58°14'43" W	12.50'
L2	S 31°45'17" E	1.95'
L3	S 58°14'43" W	7.85'
L4	S 31°45'17" E	0.65'
L5	S 58°14'43" W	2.00'
L6	N 31°45'17" W	0.65'
L7	S 58°14'43" W	7.40'
L8	N 31°45'17" W	11.00'
L9	S 58°14'43" W	8.35'
L10	S 58°14'43" W	4.10'
L11	S 31°45'17" E	9.65'
L12	S 58°14'43" W	4.30'
L13	S 31°45'17" E	1.40'
L14	S 58°14'43" W	7.50'
L15	S 31°45'17" E	0.65'
L16	S 58°14'43" W	2.00'
L17	N 31°45'17" W	0.65'
L18	S 58°14'43" W	7.70'
L19	N 31°45'17" W	2.00'
L20	S 58°14'43" W	12.50'
L21	S 32°36'28" E	289.95'
L22	N 57°22'06" E	67.00'

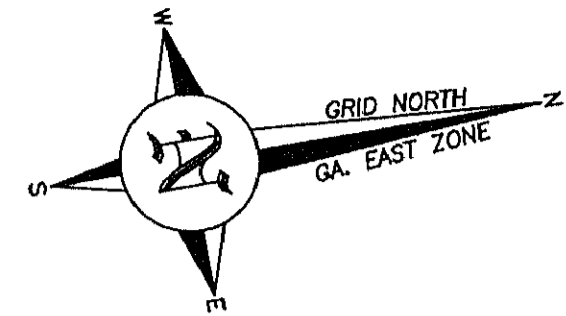


BUILDING 900-B LEGAL DESCRIPTION

Commencing at the centerline centerline intersection of Lakeview Drive and Georgia S.R. #44; thence S30°08'49"W, a distance of 1,356.96' to the POINT OF BEGINNING; thence S31°45'17"E, a distance of 40.80'; thence S58°14'43"W, a distance of 12.50'; thence S31°45'17"E, a distance of 1.95'; thence S58°14'43"W, a distance of 7.85'; thence S31°45'17"E, a distance of 0.65'; thence S58°14'43"W, a distance of 2.00'; thence N31°45'17"W, a distance of 0.65'; thence S58°14'43"W, a distance of 7.40'; thence N31°45'17"W, a distance of 11.00'; thence S58°14'43"W, a distance of 8.35'; thence N31°45'17"W, a distance of 31.75'; thence N58°14'43"E, a distance of 38.10' to the POINT OF BEGINNING.
Containing 1,514 square feet or 0.03 acres.

PUTNAM COUNTY PLANNING & ENGINEERING
Sharey Durlington
 8/22/05

REFERENCES	
■	PLAT BOOK 25, PAGE 83.
■	PLAT BOOK 13, PAGE 194.
■	PLAT BOOK 21, PAGE 158.
■	PLAT BOOK 13, PAGE 173.
■	PLAT BOOK 25, PAGE 8.
■	DEED BOOK 202, PAGE 275.
■	DEED BOOK 266, PAGE 483.



PUTNAM COUNTY, GEORGIA
 CLERK OF SUPERIOR COURT
 FILED & RECORDED *8/22/05*
 TIME *10:55*
 CABINET *0* BOOK *481*
 SLIDE *0* PAGE *361*
Sharey Durlington
 CLERK/DEPUTY CLERK



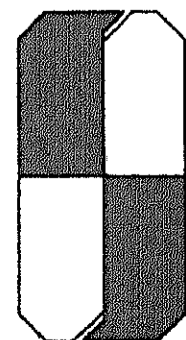
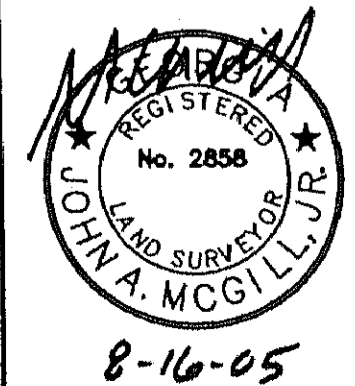
**** GENERAL NOTES ****

1. ALL UTILITIES ARE NOT LOCATED ON THIS PLAT.
2. ALL FENCES ARE NOT LOCATED ON THIS PLAT.
3. THIS PLAT IS SUBJECT TO ALL EASEMENTS, RIGHTS-OF-WAY, AND PROTECTIVE COVENANTS OF RECORD.
4. THIS SURVEY IS BASED ON INFORMATION PROVIDED BY THE CLIENT. THIS SURVEY IS NOT BASED ON A TITLE ABSTRACT.
5. VEGETATION / SHORELINES ARE NOT CONSIDERED BY THE SURVEYOR TO BE AN ENCROACHMENT.
6. ALL IMPROVEMENTS ARE NOT LOCATED ON THIS PLAT.
7. THE ONLY IMPROVEMENT SHOWN ON THIS PLAT THAT HAS BEEN PHYSICALLY LOCATED BY THE SURVEYOR IS THE FOUNDATION. ALL OTHER IMPROVEMENTS SHOWN HAVE BEEN TAKEN FROM THE DEVELOPMENT PLANS FOR THE PROJECT.

PLAT FOR:

HARMONY CROSSING, LLC
 BUILDING 900
 LAND LOT 352; 3rd LAND DISTRICT
 389th G.M.D.; PUTNAM COUNTY, GEORGIA

SURVEY DATE	AUGUST 11, 2005
MAP CLOSURE	INFINITE
DRAWN BY	J.A.M. / J.T.A.
JOB NO.	G1220-42
REVISIONS	



JOHN A. MCGILL, P.C.
 Land Surveying • Land Planning

The Oconee Company, Est. 1997
 1981 South Main Street
 Greensboro, Ga. 30642
 Phone: (706) 463-1913
 Fax: (706) 463-1914
 McGill And Associates, Est. 1972
 934 Shields Pond Road
 Thomson, Ga. 30824
 Phone: (706) 586-6612
 Fax: (706) 595-0971

THE FIELD DATA UPON WHICH THIS PLAT IS BASED HAS A CLOSURE PRECISION OF ONE FOOT IN 33,819 FEET AND AN ANGULAR ERROR OF 04" PER ANGLE POINT, AND WAS ADJUSTED USING LEAST SQUARES. ANGLES TURNED BY A LEICA TC 405 AND DISTANCES MEASURED WITH A LEICA TC 405.