

FOR SUBLEASE

Class A Office Space

515 Post Oak Boulevard Houston, Texas 77027

partners

PROPERTY HIGHLIGHTS



FLOOR
NINTH - SUITE 910



SQUARE FEET
4,588 SF



NNN RENTAL RATE
NEGOTIABLE



OPEX
\$12.77 (2022)



TIMING
30-60 DAYS



TERM
THROUGH 1/31/2028



FURNITURE
AVAILABLE

- Parking: 14 unreserved, \$45/space/mo, May convert to 3 reserved @ \$85/space/mo.
- Board Room & Conference Facility
- On-site gym and deli
- Tenant Lounge
- On-site property management

For More Information:

Jon Silberman

Managing Partner

(713) 985-4620

jon.silberman@partnersrealestate.com

Pierce Beyer

Associate

(713) 316-7029

pierce.beyer@partnersrealestate.com

PARTNERS

1360 POST OAK BLVD, #1900

HOUSTON, TX 77056

(713) 629-0500

The information contained herein has been given to us by the owner of the property or other sources we deem reliable, we have no reason to doubt its accuracy, but we do not guarantee it. All information should be verified prior to purchase or lease. © 2022 Partners. All rights reserved.

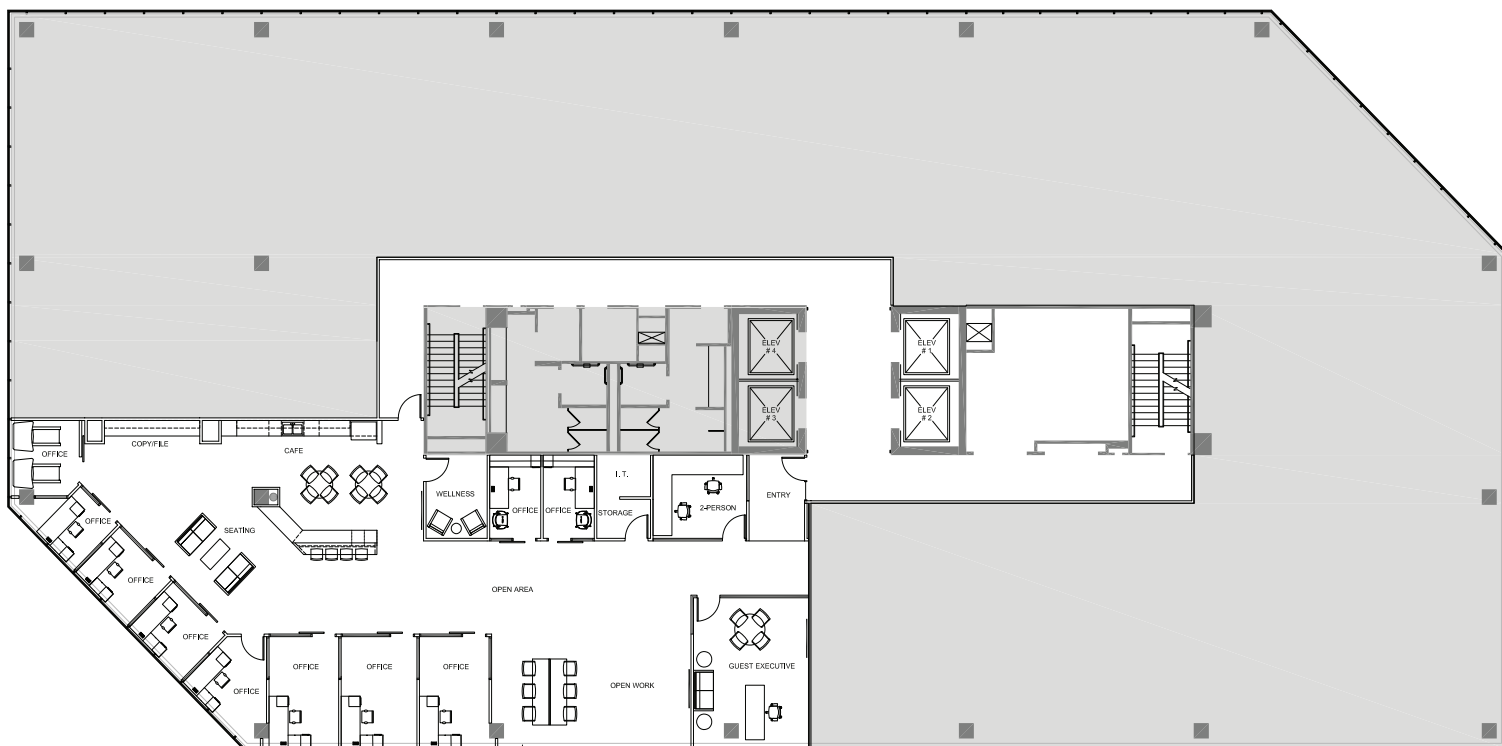
FOR SUBLEASE

Class A Office Space

515 Post Oak Boulevard Houston, Texas 77027

partners

FLOOR PLAN



For More Information:

Jon Silberman

Managing Partner

(713) 985-4620

jon.silberman@partnersrealestate.com

Pierce Beyer

Associate

(713) 316-7029

pierce.beyer@partnersrealestate.com

PARTNERS

1360 POST OAK BLVD, #1900

HOUSTON, TX 77056

(713) 629-0500

The information contained herein has been given to us by the owner of the property or other sources we deem reliable, we have no reason to doubt its accuracy, but we do not guarantee it. All information should be verified prior to purchase or lease. © 2022 Partners. All rights reserved.

FOR SUBLEASE

Class A Office Space

515 Post Oak Boulevard Houston, Texas 77027

partners



For More Information:

Jon Silberman

Managing Partner
(713) 985-4620
jon.silberman@partnersrealestate.com

Pierce Beyer

Associate
(713) 316-7029
pierce.beyer@partnersrealestate.com

PARTNERS

1360 POST OAK BLVD, #1900
HOUSTON, TX 77056
(713) 629-0500

The information contained herein has been given to us by the owner of the property or other sources we deem reliable, we have no reason to doubt its accuracy, but we do not guarantee it. All information should be verified prior to purchase or lease. © 2022 Partners. All rights reserved.

FOR SUBLEASE

Class A Office Space

515 Post Oak Boulevard Houston, Texas 77027

partners



For More Information:

Jon Silberman

Managing Partner

(713) 985-4620

jon.silberman@partnersrealestate.com

Pierce Beyer

Associate

(713) 316-7029

pierce.beyer@partnersrealestate.com

PARTNERS

1360 POST OAK BLVD, #1900

HOUSTON, TX 77056

(713) 629-0500

The information contained herein has been given to us by the owner of the property or other sources we deem reliable, we have no reason to doubt its accuracy, but we do not guarantee it. All information should be verified prior to purchase or lease. © 2022 Partners. All rights reserved.

FOR SUBLEASE

Class A Office Space

515 Post Oak Boulevard Houston, Texas 77027

partners



For More Information:

Jon Silberman

Managing Partner

(713) 985-4620

jon.silberman@partnersrealestate.com

Pierce Beyer

Associate

(713) 316-7029

pierce.beyer@partnersrealestate.com

PARTNERS

1360 POST OAK BLVD, #1900

HOUSTON, TX 77056

(713) 629-0500

The information contained herein has been given to us by the owner of the property or other sources we deem reliable, we have no reason to doubt its accuracy, but we do not guarantee it. All information should be verified prior to purchase or lease. © 2022 Partners. All rights reserved.

FOR SUBLEASE

Class A Office Space

515 Post Oak Boulevard Houston, Texas 77027

partners



For More Information:

Jon Silberman

Managing Partner

(713) 985-4620

jon.silberman@partnersrealestate.com

Pierce Beyer

Associate

(713) 316-7029

pierce.beyer@partnersrealestate.com

PARTNERS

1360 POST OAK BLVD, #1900

HOUSTON, TX 77056

(713) 629-0500

The information contained herein has been given to us by the owner of the property or other sources we deem reliable, we have no reason to doubt its accuracy, but we do not guarantee it. All information should be verified prior to purchase or lease. © 2022 Partners. All rights reserved.