

**FOR  
SALE**



# **2022 Murchison**

*El Paso, Texas 79902*

Roland Correa  
Commercial Broker  
(915) 328-9992  
[roland@rcproperties-elp.com](mailto:roland@rcproperties-elp.com)  
[www.rcproperties-elp.com](http://www.rcproperties-elp.com)

Price Reduction: ~~\$2.7 Million~~ \$2.5 Million

### PROPERTY HIGHLIGHTS

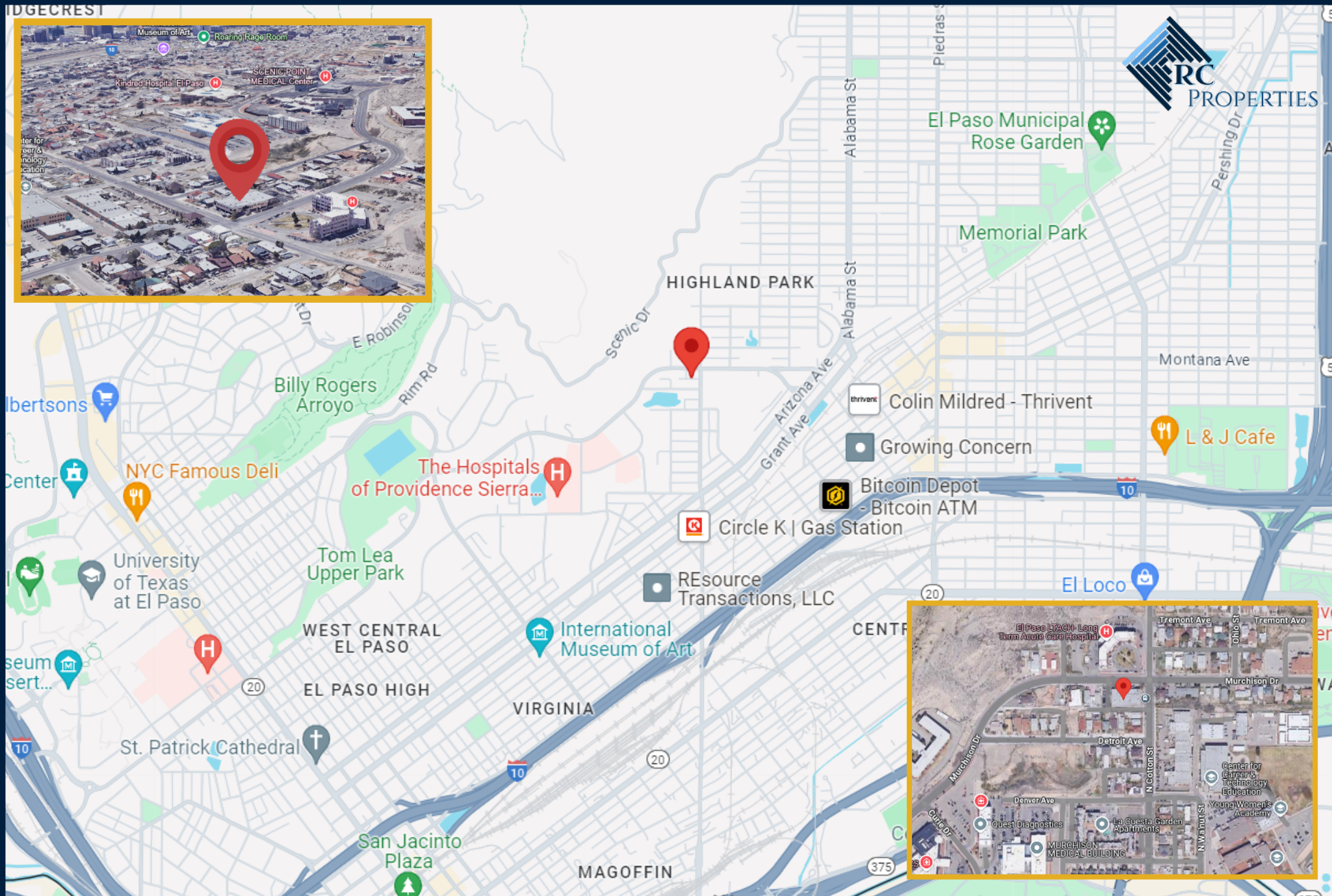
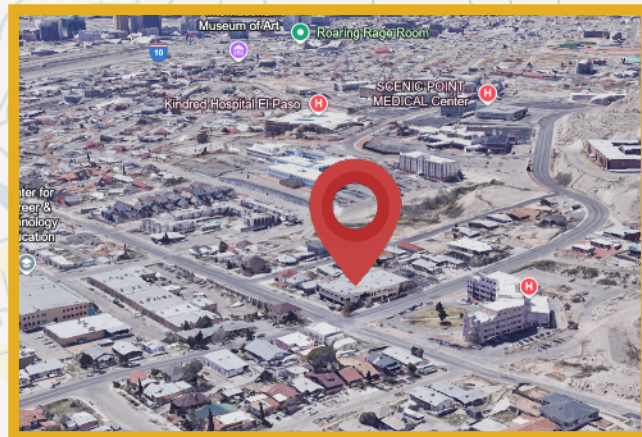
- Building Size: 14,285 sf
- Lot Size: 27,000 sf
- Total Parking Spaces: 69
  - Covered: 38

---

Medical/Professional office in the heart of Central El Paso on Murchison next to the Hospitals of Providence Sierra Campus with easy access to I-10. Spaces are move in ready and the property has underground covered parking. Perfect for a doctor, dentist, or professional office space.







2022 Murchison El Paso, TX 79902

Roland Correa  
Commercial Broker  
(915) 328-9992  
roland@rcproperties-elp.com  
www.rcproperties-elp.com

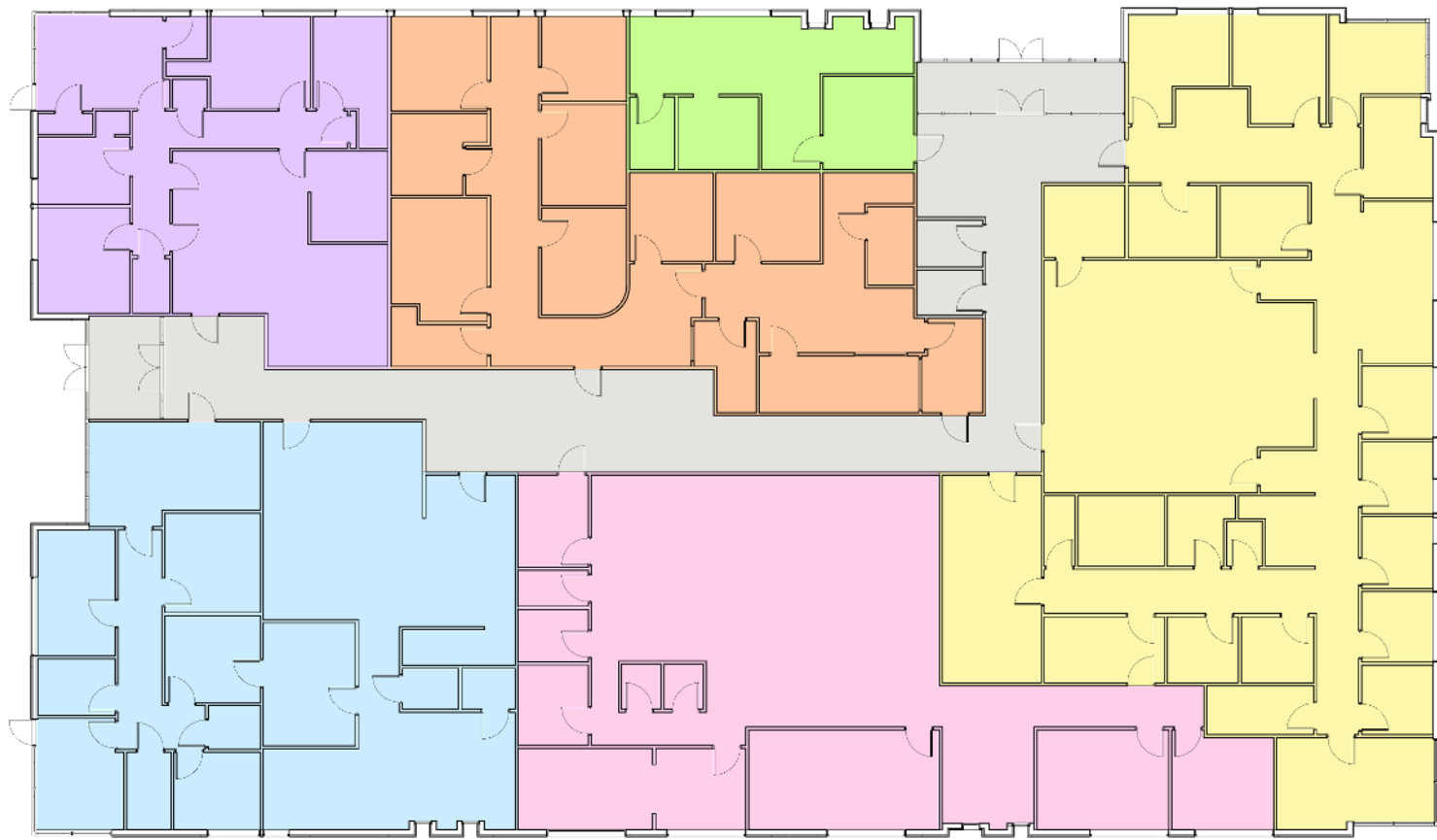




*2022 Murchison, El Paso, TX 79902*

Roland Correa  
Commercial Broker  
(915) 328-9992  
[roland@rcproperties-elp.com](mailto:roland@rcproperties-elp.com)  
[www.rcproperties-elp.com](http://www.rcproperties-elp.com)





LEGEND	
<span style="color: lightblue;">■</span>	SUITE A 2,400 SF
<span style="color: pink;">■</span>	SUITE B 2,320 SF
<span style="color: yellow;">■</span>	SUITE C 5,507 SF
<span style="color: lightgreen;">■</span>	SUITE D 275 SF
<span style="color: orange;">■</span>	SUITE E 4,113 SF
<span style="color: purple;">■</span>	SUITE F 1,457 SF
<span style="color: grey;">■</span>	CIRCULATION/SUPPORT SPACES 1,586 SF
TOTAL SF: 14,658	

01 2022 MURCHISON DR. - EXISTING FLOOR PLAN

A12.00 / SCALE: 1/8" = 1'-0" 0 5' 10' 20'



2022 Murchison, El Paso, TX 79902

Roland Correa  
Commercial Broker  
(915) 328-9992  
roland@rcproperties-elp.com  
www.rcproperties-elp.com